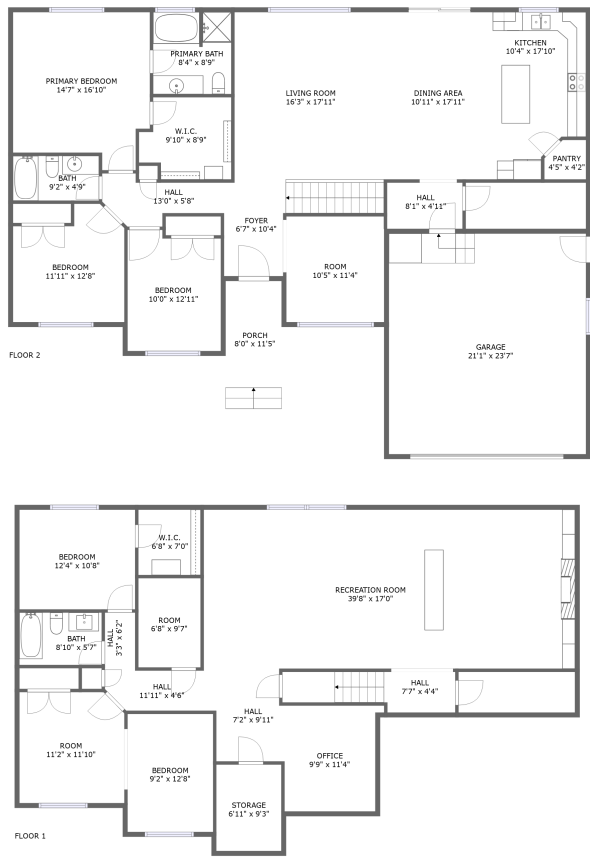




Home report


557 East 800 South, Providence, Cache County, Utah, United States, 84332




Property summary

 **1** Garages

 **5** Bedrooms

 **3** Bathrooms

 **0** Half baths

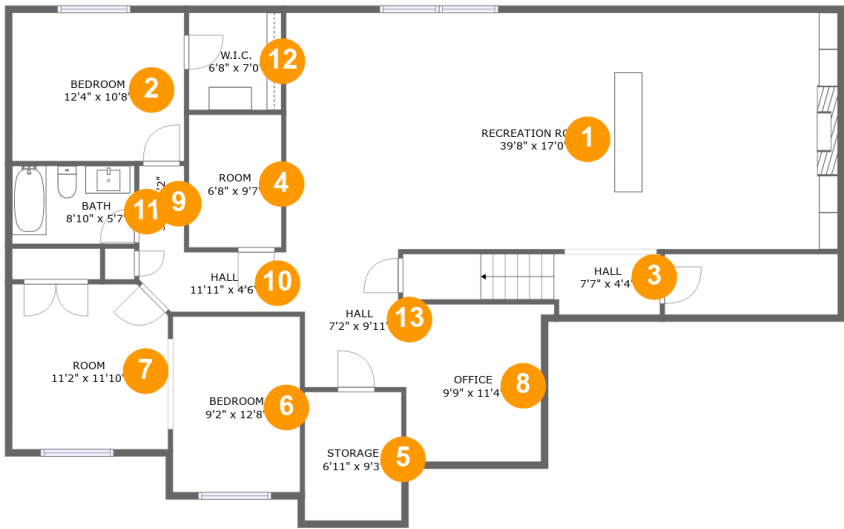
 **2** Floors

 **3,667** Gross living area sqft

 **4,356** Total sqft

Home report

557 East 800 South, Providence, Cache County, Utah, United States, 84332



Room dimensions

Floor 1 Total sqft: 1825 Living area: 1754

#		Dimensions	sqft	Counted as living area
1	Recreation Room	39'8" x 17'0"	674 sq. ft	Yes
2	Bedroom	12'4" x 10'8"	132 sq. ft	Yes
3	Hall	7'7" x 4'4"	68 sq. ft	Yes
4	Room	6'8" x 9'7"	63 sq. ft	Yes
5	Storage	6'11" x 9'3"	64 sq. ft	No
6	Bedroom	9'2" x 12'8"	115 sq. ft	Yes
7	Room	11'2" x 11'10"	131 sq. ft	Yes
8	Office	9'9" x 11'4"	111 sq. ft	Yes
9	Hall	3'3" x 6'2"	20 sq. ft	Yes
10	Hall	11'11" x 4'6"	49 sq. ft	Yes
11	Bath	8'10" x 5'7"	49 sq. ft	Yes

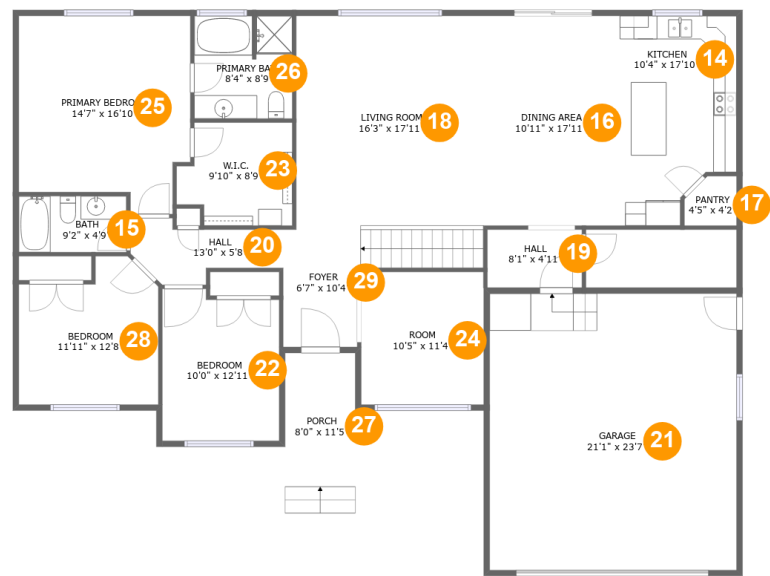
Home report

557 East 800 South, Providence, Cache County, Utah, United States, 84332

#		Dimensions	sqft	Counted as living area
12	W.I.C.	6'8" x 7'0"	47 sq. ft	Yes
13	Hall	7'2" x 9'11"	69 sq. ft	Yes

Home report

557 East 800 South, Providence, Cache County, Utah, United States, 84332



Room dimensions

Floor 2 Total sqft: 2531 Living area: 1913

#		Dimensions	sqft	Counted as living area
14	Kitchen	10'4" x 17'10"	165 sq. ft	Yes
15	Bath	9'2" x 4'9"	44 sq. ft	Yes
16	Dining Area	10'11" x 17'11"	195 sq. ft	Yes
17	Pantry	4'5" x 4'2"	17 sq. ft	Yes
18	Living Room	16'3" x 17'11"	291 sq. ft	Yes
19	Hall	8'1" x 4'11"	40 sq. ft	Yes
20	Hall	13'0" x 5'8"	52 sq. ft	Yes
21	Garage	21'1" x 23'7"	497 sq. ft	No
22	Bedroom	10'0" x 12'11"	123 sq. ft	Yes
23	W.I.C.	9'10" x 8'9"	77 sq. ft	Yes
24	Room	10'5" x 11'4"	118 sq. ft	Yes

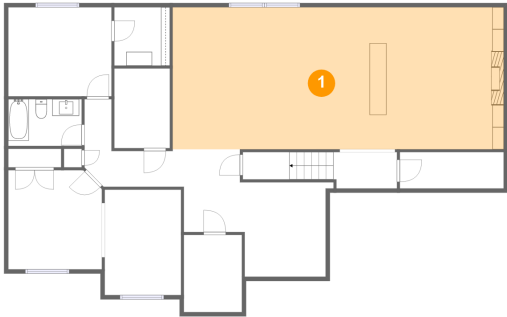
Home report

557 East 800 South, Providence, Cache County, Utah, United States, 84332

#		Dimensions	sqft	Counted as living area
25	Primary Bedroom	14'7" x 16'10"	223 sq. ft	Yes
26	Primary Bath	8'4" x 8'9"	72 sq. ft	Yes
27	Porch	8'0" x 11'5"	92 sq. ft	No
28	Bedroom	11'11" x 12'8"	132 sq. ft	Yes
29	Foyer	6'7" x 10'4"	104 sq. ft	Yes

557 East 800 South, Providence, Cache County, Utah, United States, 84332

1 Floor 1 - Recreation Room



Dimensions: 39'8" x 17'0"
Area: 674 sq. ft
Counted as living area: Yes

Heated: Yes
Finished: Yes
Enclosed: Yes
Contiguous: Yes
Permitted: Yes
Wet space: No
Addition: No
Conversion: No

2 Floor 1 - Bedroom

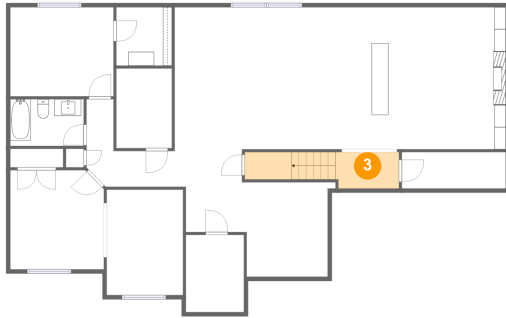


Dimensions: 12'4" x 10'8"
Area: 132 sq. ft
Counted as living area: Yes

Heated: Yes
Finished: Yes
Enclosed: Yes
Contiguous: Yes
Permitted: Yes
Wet space: No
Addition: No
Conversion: No

557 East 800 South, Providence, Cache County, Utah, United States, 84332

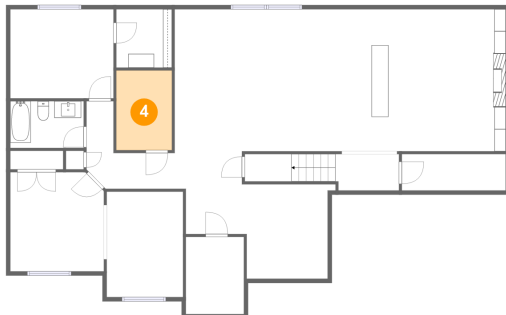
3 Floor 1 - Hall



Dimensions: 7'7" x 4'4"
Area: 68 sq. ft
Counted as living area: Yes

Heated: Yes
Finished: Yes
Enclosed: Yes
Contiguous: Yes
Permitted: Yes
Wet space: No
Addition: No
Conversion: No

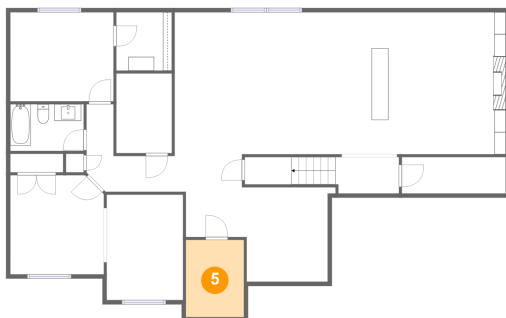
4 Floor 1 - Room



Dimensions: 6'8" x 9'7"
Area: 63 sq. ft
Counted as living area: Yes

Heated: Yes
Finished: Yes
Enclosed: Yes
Contiguous: Yes
Permitted: Yes
Wet space: No
Addition: No
Conversion: No

5 Floor 1 - Storage



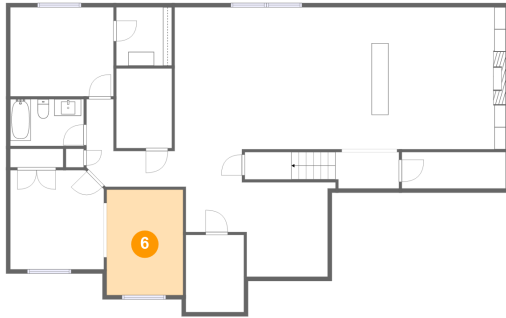
Dimensions: 6'11" x 9'3"
Area: 64 sq. ft
Counted as living area: No

Heated: No
Finished: No
Enclosed: No
Contiguous: Yes
Permitted: Yes
Wet space: No
Addition: No
Conversion: No

Home report

557 East 800 South, Providence, Cache County, Utah, United States, 84332

6 Floor 1 - Bedroom



Dimensions: 9'2" x 12'8"
Area: 115 sq. ft
Counted as living area: Yes

Heated: Yes
Finished: Yes
Enclosed: Yes
Contiguous: Yes
Permitted: Yes
Wet space: No
Addition: No
Conversion: No

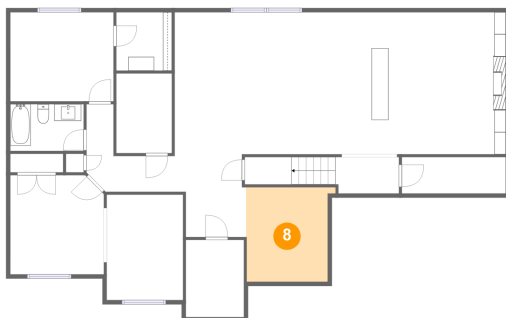
7 Floor 1 - Room



Dimensions: 11'2" x 11'10"
Area: 131 sq. ft
Counted as living area: Yes

Heated: Yes
Finished: Yes
Enclosed: Yes
Contiguous: Yes
Permitted: Yes
Wet space: No
Addition: No
Conversion: No

8 Floor 1 - Office



Dimensions: 9'9" x 11'4"
Area: 111 sq. ft
Counted as living area: Yes

Heated: Yes
Finished: Yes
Enclosed: Yes
Contiguous: Yes
Permitted: Yes
Wet space: No
Addition: No
Conversion: No

Home report

557 East 800 South, Providence, Cache County, Utah, United States, 84332

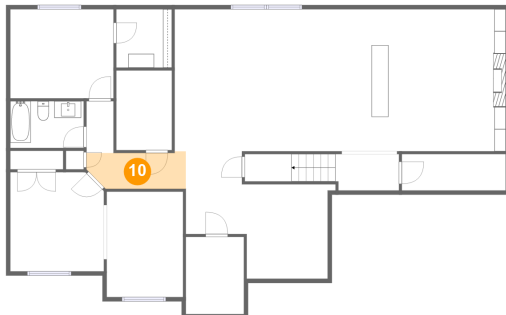
9 Floor 1 - Hall



Dimensions: 3'3" x 6'2"
Area: 20 sq. ft
Counted as living area: Yes

Heated: Yes
Finished: Yes
Enclosed: Yes
Contiguous: Yes
Permitted: Yes
Wet space: No
Addition: No
Conversion: No

10 Floor 1 - Hall



Dimensions: 11'11" x 4'6"
Area: 49 sq. ft
Counted as living area: Yes

Heated: Yes
Finished: Yes
Enclosed: Yes
Contiguous: Yes
Permitted: Yes
Wet space: No
Addition: No
Conversion: No

11 Floor 1 - Bath



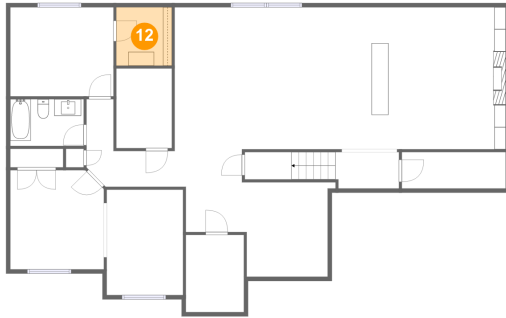
Dimensions: 8'10" x 5'7"
Area: 49 sq. ft
Counted as living area: Yes

Heated: Yes
Finished: Yes
Enclosed: Yes
Contiguous: Yes
Permitted: Yes
Wet space: Yes
Addition: No
Conversion: No

Home report

557 East 800 South, Providence, Cache County, Utah, United States, 84332

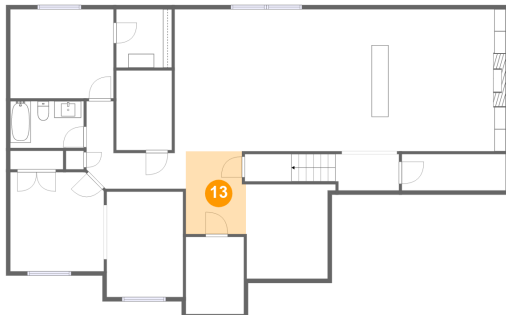
12 Floor 1 - W.I.C.



Dimensions: 6'8" x 7'0"
Area: 47 sq. ft
Counted as living area: Yes

Heated: Yes
Finished: Yes
Enclosed: Yes
Contiguous: Yes
Permitted: Yes
Wet space: No
Addition: No
Conversion: No

13 Floor 1 - Hall



Dimensions: 7'2" x 9'11"
Area: 69 sq. ft
Counted as living area: Yes

Heated: Yes
Finished: Yes
Enclosed: Yes
Contiguous: Yes
Permitted: Yes
Wet space: No
Addition: No
Conversion: No

14 Floor 2 - Kitchen



Dimensions: 10'4" x 17'10"
Area: 165 sq. ft
Counted as living area: Yes

Heated: Yes
Finished: Yes
Enclosed: Yes
Contiguous: Yes
Permitted: Yes
Wet space: No
Addition: No
Conversion: No

557 East 800 South, Providence, Cache County, Utah, United States, 84332

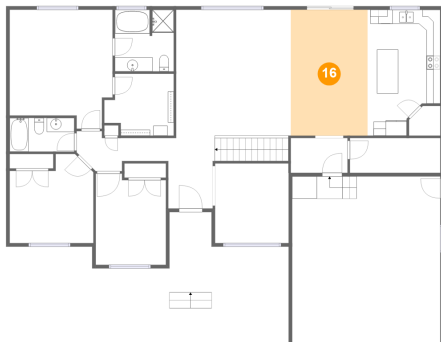
15 Floor 2 - Bath



Dimensions: 9'2" x 4'9"
Area: 44 sq. ft
Counted as living area: Yes

Heated: Yes
Finished: Yes
Enclosed: Yes
Contiguous: Yes
Permitted: Yes
Wet space: Yes
Addition: No
Conversion: No

16 Floor 2 - Dining Area



Dimensions: 10'11" x 17'11"
Area: 195 sq. ft
Counted as living area: Yes

Heated: Yes
Finished: Yes
Enclosed: Yes
Contiguous: Yes
Permitted: Yes
Wet space: No
Addition: No
Conversion: No

17 Floor 2 - Pantry

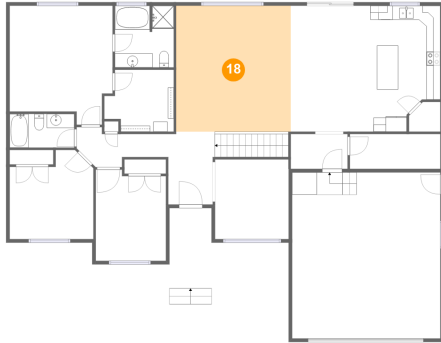


Dimensions: 4'5" x 4'2"
Area: 17 sq. ft
Counted as living area: Yes

Heated: Yes
Finished: Yes
Enclosed: Yes
Contiguous: Yes
Permitted: Yes
Wet space: No
Addition: No
Conversion: No

557 East 800 South, Providence, Cache County, Utah, United States, 84332

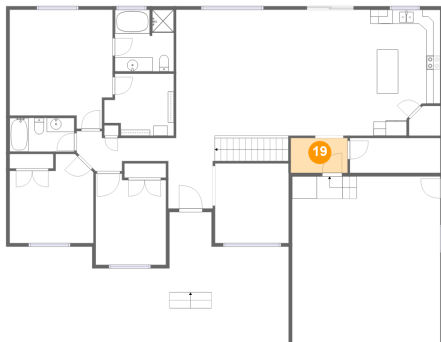
18 Floor 2 - Living Room



Dimensions: 16'3" x 17'11"
Area: 291 sq. ft
Counted as living area: Yes

Heated: Yes
Finished: Yes
Enclosed: Yes
Contiguous: Yes
Permitted: Yes
Wet space: No
Addition: No
Conversion: No

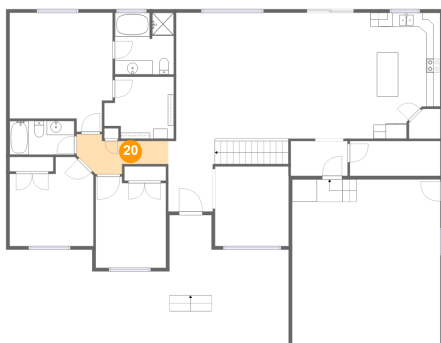
19 Floor 2 - Hall



Dimensions: 8'1" x 4'11"
Area: 40 sq. ft
Counted as living area: Yes

Heated: Yes
Finished: Yes
Enclosed: Yes
Contiguous: Yes
Permitted: Yes
Wet space: No
Addition: No
Conversion: No

20 Floor 2 - Hall

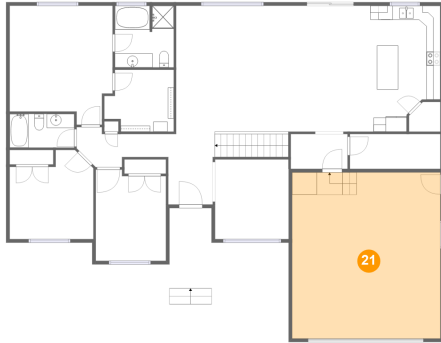


Dimensions: 13'0" x 5'8"
Area: 52 sq. ft
Counted as living area: Yes

Heated: Yes
Finished: Yes
Enclosed: Yes
Contiguous: Yes
Permitted: Yes
Wet space: No
Addition: No
Conversion: No

557 East 800 South, Providence, Cache County, Utah, United States, 84332

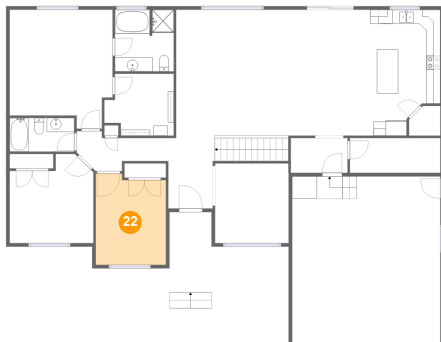
21 Floor 2 - Garage



Dimensions: 21'1" x 23'7"
Area: 497 sq. ft
Counted as living area: No

Heated: No
Finished: No
Enclosed: Yes
Contiguous: Yes
Permitted: Yes
Wet space: No
Addition: No
Conversion: No

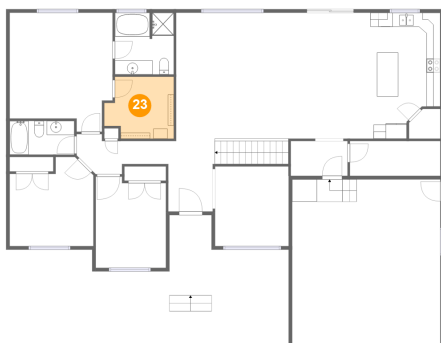
22 Floor 2 - Bedroom



Dimensions: 10'0" x 12'11"
Area: 123 sq. ft
Counted as living area: Yes

Heated: Yes
Finished: Yes
Enclosed: Yes
Contiguous: Yes
Permitted: Yes
Wet space: No
Addition: No
Conversion: No

23 Floor 2 - W.I.C.

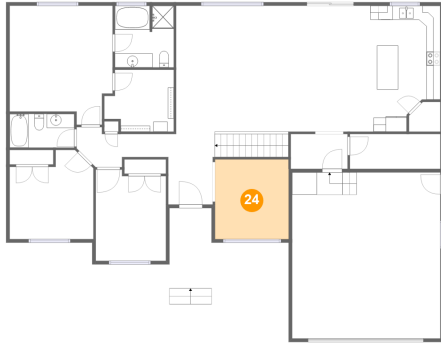


Dimensions: 9'10" x 8'9"
Area: 77 sq. ft
Counted as living area: Yes

Heated: Yes
Finished: Yes
Enclosed: Yes
Contiguous: Yes
Permitted: Yes
Wet space: No
Addition: No
Conversion: No

557 East 800 South, Providence, Cache County, Utah, United States, 84332

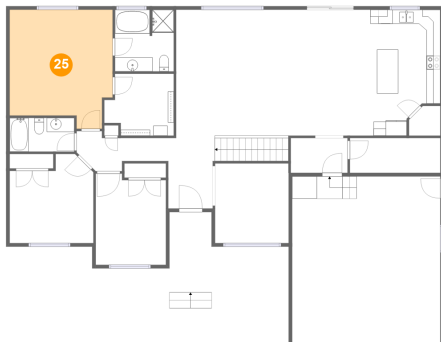
24 Floor 2 - Room



Dimensions: 10'5" x 11'4"
Area: 118 sq. ft
Counted as living area: Yes

Heated: Yes
Finished: Yes
Enclosed: Yes
Contiguous: Yes
Permitted: Yes
Wet space: No
Addition: No
Conversion: No

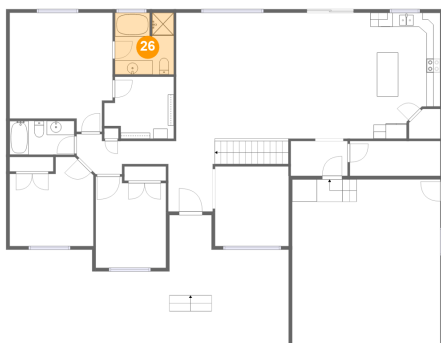
25 Floor 2 - Primary Bedroom



Dimensions: 14'7" x 16'10"
Area: 223 sq. ft
Counted as living area: Yes

Heated: Yes
Finished: Yes
Enclosed: Yes
Contiguous: Yes
Permitted: Yes
Wet space: No
Addition: No
Conversion: No

26 Floor 2 - Primary Bath

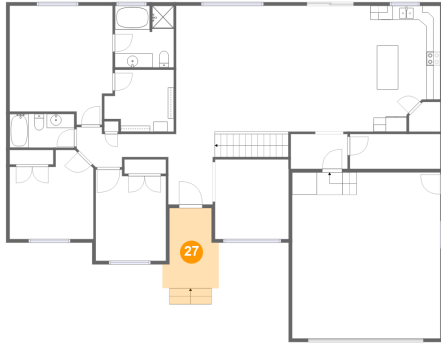


Dimensions: 8'4" x 8'9"
Area: 72 sq. ft
Counted as living area: Yes

Heated: Yes
Finished: Yes
Enclosed: Yes
Contiguous: Yes
Permitted: Yes
Wet space: Yes
Addition: No
Conversion: No

557 East 800 South, Providence, Cache County, Utah, United States, 84332

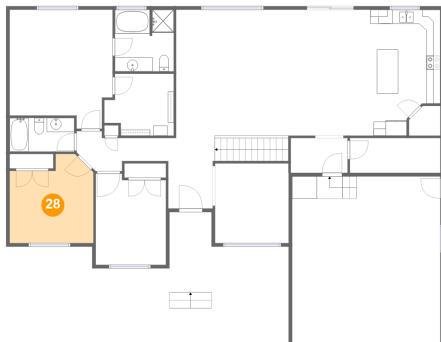
27 Floor 2 - Porch



Dimensions: 8'0" x 11'5"
Area: 92 sq. ft
Counted as living area: No

Heated: No
Finished: Yes
Enclosed: No
Contiguous: Yes
Permitted: Yes
Wet space: No
Addition: No
Conversion: No

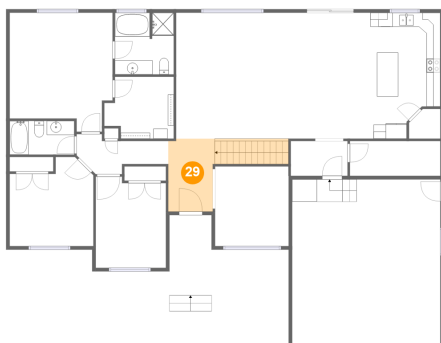
28 Floor 2 - Bedroom



Dimensions: 11'11" x 12'8"
Area: 132 sq. ft
Counted as living area: Yes

Heated: Yes
Finished: Yes
Enclosed: Yes
Contiguous: Yes
Permitted: Yes
Wet space: No
Addition: No
Conversion: No

29 Floor 2 - Foyer



Dimensions: 6'7" x 10'4"
Area: 104 sq. ft
Counted as living area: Yes

Heated: Yes
Finished: Yes
Enclosed: Yes
Contiguous: Yes
Permitted: Yes
Wet space: No
Addition: No
Conversion: No