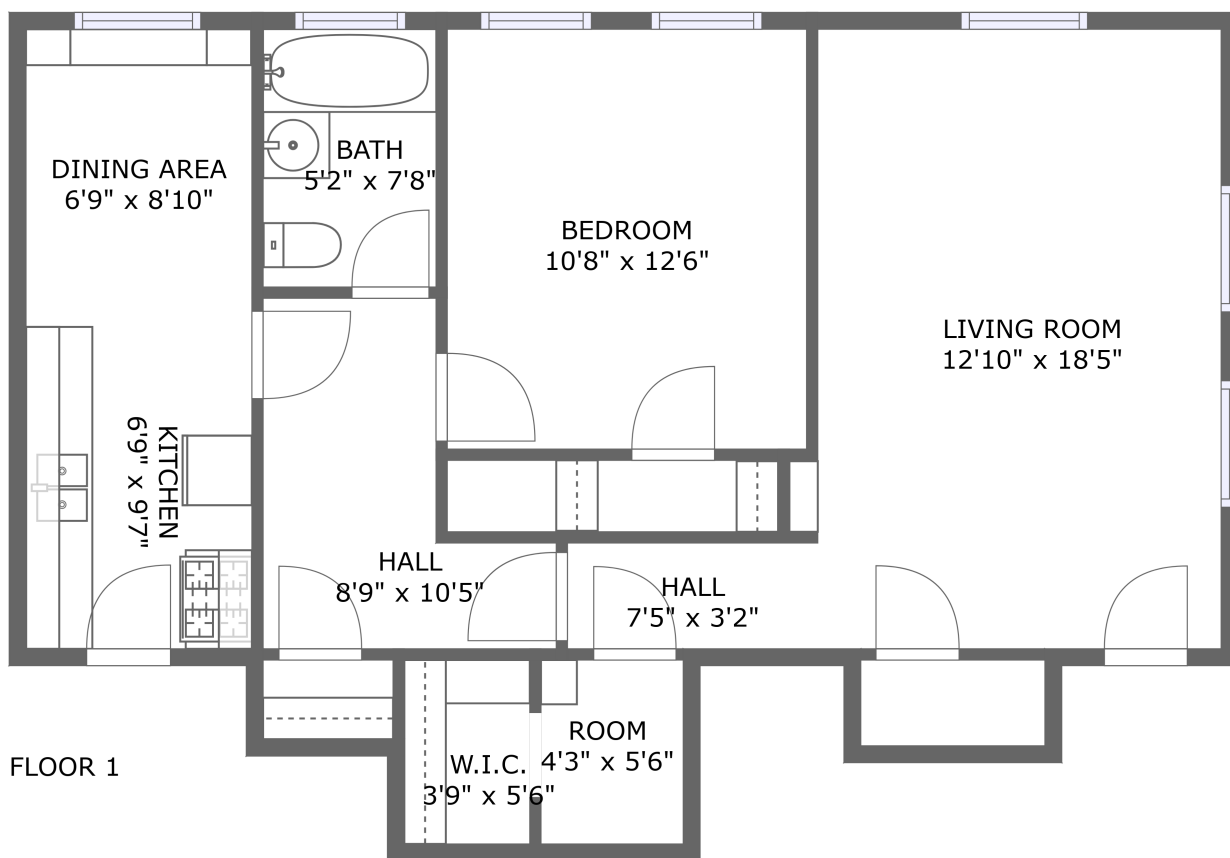



1253 S Citrus Ave, Los Angeles, CA, US



Property summary


 **0** Garages


 **1** Bedrooms

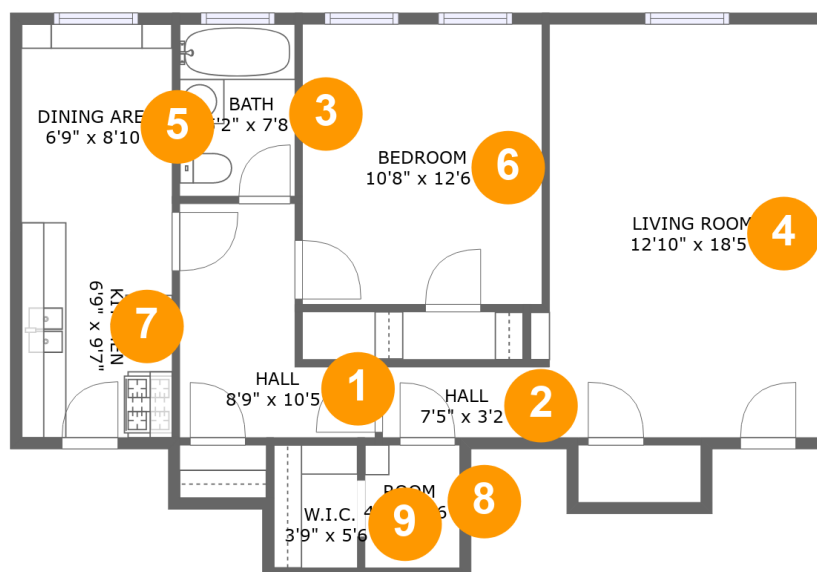
 **1** Bathrooms

 **0** Half baths

 **1** Floors

 **732** Gross living area sqft

 **732** Total sqft

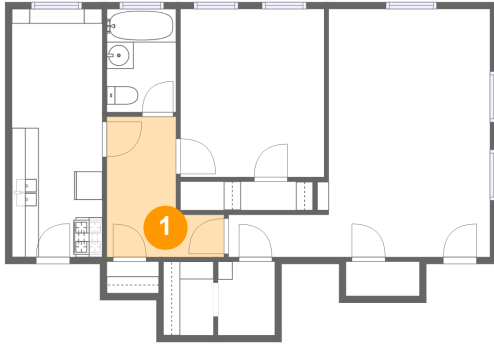
1253 S Citrus Ave, Los Angeles, CA, US**Room dimensions**

Floor 1

Total sqft: 732 Living area: 732

#		Dimensions	sqft	Counted as living area
1	Hall	8'9" x 10'5"	65 sq. ft	Yes
2	Hall	7'5" x 3'2"	23 sq. ft	Yes
3	Bath	5'2" x 7'8"	39 sq. ft	Yes
4	Living Room	12'10" x 18'5"	223 sq. ft	Yes
5	Dining Room	6'9" x 8'10"	60 sq. ft	Yes
6	Bedroom	10'8" x 12'6"	134 sq. ft	Yes
7	Kitchen	6'9" x 9'7"	64 sq. ft	Yes
8	Room	4'3" x 5'6"	23 sq. ft	Yes
9	Cl	3'9" x 5'6"	20 sq. ft	Yes

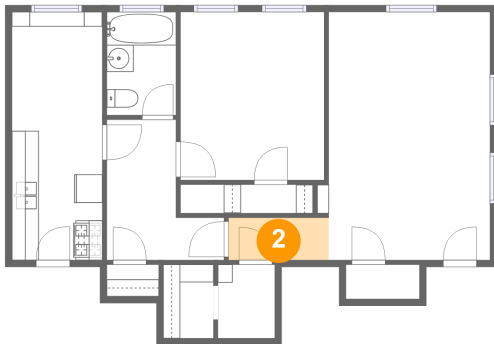
1 Floor 1 - Hall



Dimensions: 8'9" x 10'5"
Area: 65 sq. ft
Counted as living area: Yes

Heated: Yes
Finished: Yes
Enclosed: Yes
Contiguous: Yes
Permitted: Yes
Wet space: No
Addition: No
Conversion: No

2 Floor 1 - Hall

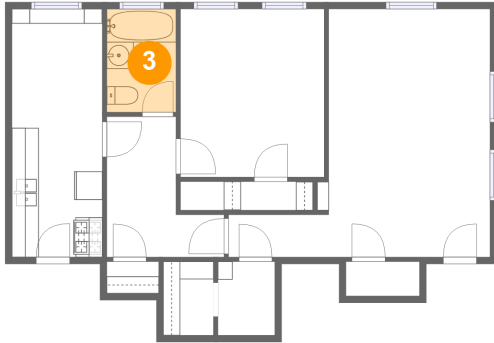


Dimensions: 7'5" x 3'2"
Area: 23 sq. ft
Counted as living area: Yes

Heated: Yes
Finished: Yes
Enclosed: Yes
Contiguous: Yes
Permitted: Yes
Wet space: No
Addition: No
Conversion: No

1253 S Citrus Ave, Los Angeles, CA, US

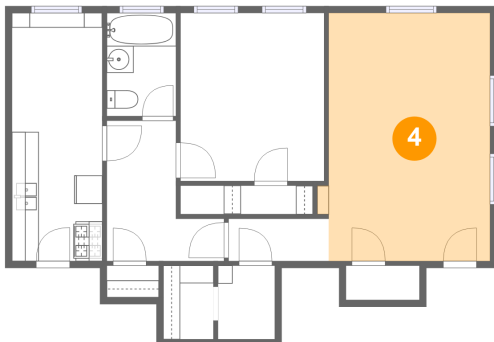
3 Floor 1 - Bath



Dimensions: 5'2" x 7'8"
Area: 39 sq. ft
Counted as living area: Yes

Heated: Yes
Finished: Yes
Enclosed: Yes
Contiguous: Yes
Permitted: Yes
Wet space: Yes
Addition: No
Conversion: No

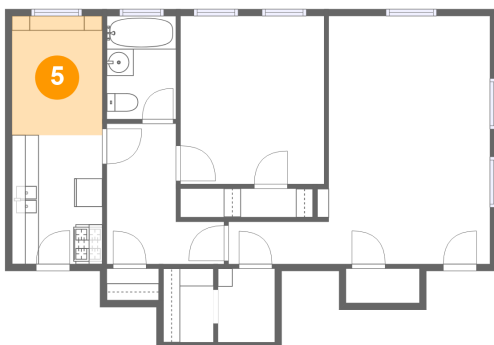
4 Floor 1 - Living Room



Dimensions: 12'10" x 18'5"
Area: 223 sq. ft
Counted as living area: Yes

Heated: Yes
Finished: Yes
Enclosed: Yes
Contiguous: Yes
Permitted: Yes
Wet space: No
Addition: No
Conversion: No

5 Floor 1 - Dining Room

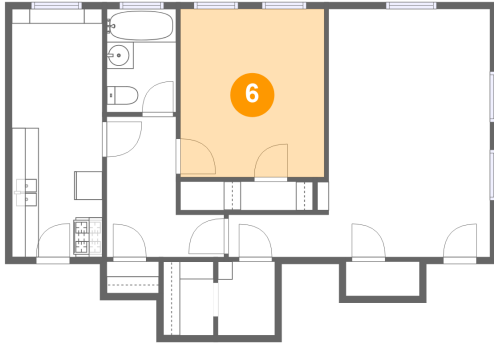


Dimensions: 6'9" x 8'10"
Area: 60 sq. ft
Counted as living area: Yes

Heated: Yes
Finished: Yes
Enclosed: Yes
Contiguous: Yes
Permitted: Yes
Wet space: No
Addition: No
Conversion: No

1253 S Citrus Ave, Los Angeles, CA, US

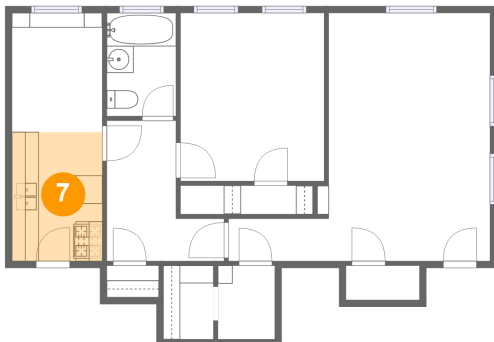
6 Floor 1 - Bedroom



Dimensions: 10'8" x 12'6"
Area: 134 sq. ft
Counted as living area: Yes

Heated: Yes
Finished: Yes
Enclosed: Yes
Contiguous: Yes
Permitted: Yes
Wet space: No
Addition: No
Conversion: No

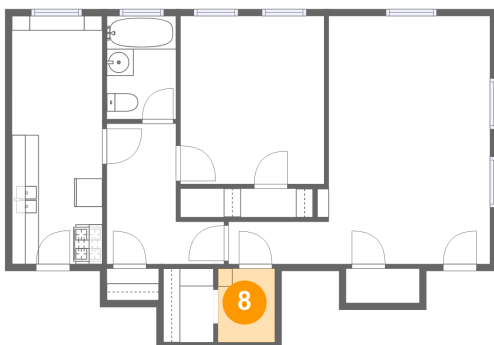
7 Floor 1 - Kitchen



Dimensions: 6'9" x 9'7"
Area: 64 sq. ft
Counted as living area: Yes

Heated: Yes
Finished: Yes
Enclosed: Yes
Contiguous: Yes
Permitted: Yes
Wet space: No
Addition: No
Conversion: No

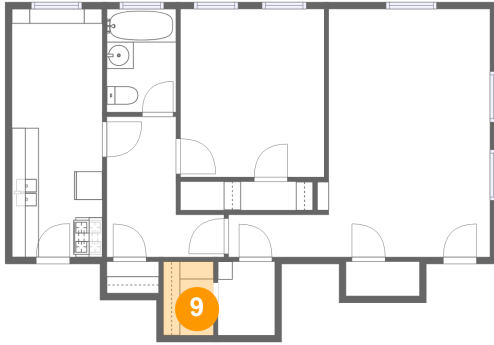
8 Floor 1 - Room



Dimensions: 4'3" x 5'6"
Area: 23 sq. ft
Counted as living area: Yes

Heated: Yes
Finished: Yes
Enclosed: Yes
Contiguous: Yes
Permitted: Yes
Wet space: No
Addition: No
Conversion: No

9 Floor 1 - Cl



Dimensions: 3'9" x 5'6"
Area: 20 sq. ft
Counted as living area: Yes

Heated: Yes
Finished: Yes
Enclosed: Yes
Contiguous: Yes
Permitted: Yes
Wet space: No
Addition: No
Conversion: No