


128 123 Street Northwest, Tulalip, Snohomish County, Washington, United States, 98271




Property Summary

 0 garages

 5 bedrooms

 3 bathrooms

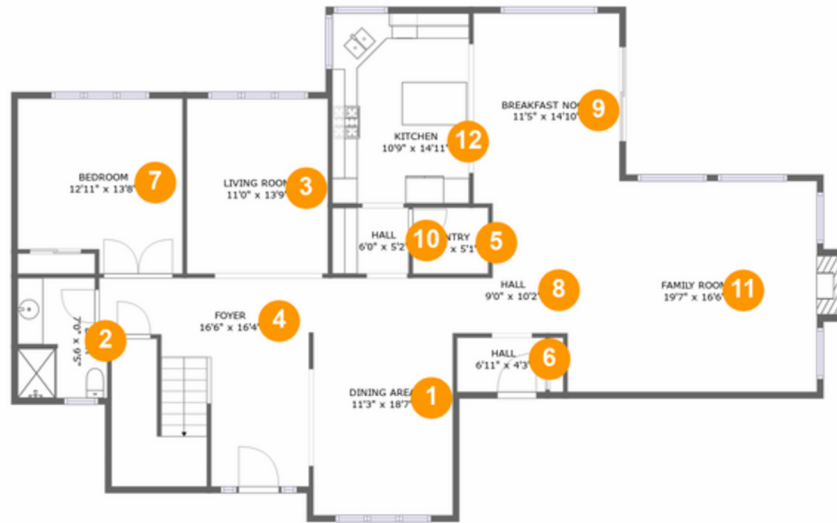
 0 half baths

 2 floors

 3,475
Gross Living
Area sqft

 3,744
total sqft

128 123 Street Northwest, Tulalip, Snohomish County, Washington, United States, 98271



Room Dimensions

Floor 1

Total sqft: 1832

Living area: 1821

#	Room name	Dimensions	Area (sqft)	Counted as Living Area
1	Dining Area	11'3" x 18'7"	205 sq. ft	Yes
2	Bath	7'0" x 9'5"	60 sq. ft	Yes
3	Living Room	11'0" x 13'9"	152 sq. ft	Yes
4	Foyer	16'6" x 16'4"	251 sq. ft	Yes
5	Pantry	5'11" x 5'1"	31 sq. ft	Yes
6	Hall	6'11" x 4'3"	30 sq. ft	Yes
7	Bedroom	12'11" x 13'8"	165 sq. ft	Yes
8	Hall	9'0" x 10'2"	73 sq. ft	Yes
9	Breakfast Nook	11'5" x 14'10"	171 sq. ft	Yes
10	Hall	6'0" x 5'2"	31 sq. ft	Yes
11	Family Room	19'7" x 16'6"	325 sq. ft	Yes

Scan captured on Wed, 24 Jul 2024 04:10:15 GMT

Information is calculated by CubiCasa technology; deemed highly reliable but not guaranteed.

128 123 Street Northwest, Tulalip, Snohomish County, Washington, United States, 98271

#	Room name	Dimensions	Area (sqft)	Counted as Living Area
12	Kitchen	10'9" x 14'11"	160 sq. ft	Yes

128 123 Street Northwest, Tulalip, Snohomish County, Washington, United States, 98271



Room Dimensions

Floor 2

Total sqft: 1912

Living area: 1654

#	Room name	Dimensions	Area (sqft)	Counted as Living Area
13	Open To Below	11'0" x 13'9"	152 sq. ft	No
14	W.i.c.	5'10" x 8'8"	51 sq. ft	Yes
15	Wc	2'11" x 6'4"	19 sq. ft	Yes
16	Hall	17'0" x 6'3"	165 sq. ft	Yes
17	Open To Below	11'7" x 11'10"	98 sq. ft	No
18	Primary Bath	15'2" x 12'11"	130 sq. ft	Yes
19	Hall	5'10" x 3'8"	22 sq. ft	Yes
20	Exercise Room	12'11" x 15'7"	202 sq. ft	Yes
21	Laundry	7'0" x 9'4"	66 sq. ft	Yes
22	Bedroom	10'5" x 11'0"	105 sq. ft	Yes
23	Bedroom	12'4" x 11'10"	120 sq. ft	Yes

**128 123 Street Northwest, Tulalip, Snohomish
County, Washington, United States, 98271**

#	Room name	Dimensions	Area (sqft)	Counted as Living Area
24	Hall	29'0" x 4'5"	109 sq. ft	Yes
25	Bath	4'9" x 11'10"	56 sq. ft	Yes
26	Primary Bedroom	16'5" x 14'5"	235 sq. ft	Yes
27	Bedroom	10'11" x 14'2"	147 sq. ft	Yes

128 123 Street Northwest, Tulalip, Snohomish County, Washington, United States, 98271

1 Floor 1 - Dining Area



Dimensions: 11'3" x 18'7"
Area: 205 sq. ft
Counted as Living Area:
Yes

Heated: Yes
Finished: Yes
Enclosed: Yes
Contiguous:
Yes Permitted:
Yes Wet Space:
No Addition:
No Conversion:
No

2 Floor 1 - Bath



Dimensions: 7'0" x 9'5"
Area: 60 sq. ft
Counted as Living Area:
Yes

Heated: Yes
Finished: Yes
Enclosed: Yes
Contiguous:
Yes
Permitted: Yes
Wet Space: Yes
Addition: No
Conversion: No

128 123 Street Northwest, Tulalip, Snohomish County, Washington, United States, 98271

3 Floor 1 - Living Room



Dimensions: 11'0" x 13'9"
Area: 152 sq. ft
Counted as Living Area:
Yes

Heated: Yes
Finished: Yes
Enclosed: Yes
Contiguous:
Yes Permitted:
Yes Wet Space:
No Addition:
No Conversion:
No

4 Floor 1 - Foyer



Dimensions: 16'6" x 16'4"
Area: 251 sq. ft
Counted as Living Area:
Yes

Heated: Yes
Finished: Yes
Enclosed: Yes
Contiguous:
Yes Permitted:
Yes Wet Space:
No Addition:
No Conversion:
No

5 Floor 1 - Pantry



Dimensions: 5'11" x 5'1"
Area: 31 sq. ft
Counted as Living Area:
Yes

Heated: Yes
Finished: Yes
Enclosed: Yes
Contiguous:
Yes Permitted:
Yes Wet Space:
No Addition:
No Conversion:
No

128 123 Street Northwest, Tulalip, Snohomish County, Washington, United States, 98271

6 Floor 1 - Hall



Dimensions: 6'11" x 4'3"
Area: 30 sq. ft
Counted as Living Area:
Yes

Heated: Yes
Finished: Yes
Enclosed: Yes
Contiguous:
Yes Permitted:
Yes Wet Space:
No Addition:
No Conversion:
No

7 Floor 1 - Bedroom



Dimensions: 12'11" x 13'8"
Area: 165 sq. ft
Counted as Living Area:
Yes

Heated: Yes
Finished: Yes
Enclosed: Yes
Contiguous:
Yes Permitted:
Yes Wet Space:
No Addition:
No Conversion:
No

8 Floor 1 - Hall



Dimensions: 9'0" x 10'2"
Area: 73 sq. ft
Counted as Living Area:
Yes

Heated: Yes
Finished: Yes
Enclosed: Yes
Contiguous:
Yes Permitted:
Yes Wet Space:
No Addition:
No Conversion:
No

128 123 Street Northwest, Tulalip, Snohomish County, Washington, United States, 98271

9 Floor 1 - Breakfast Nook



Dimensions: 11'5" x 14'10"
Area: 171 sq. ft
Counted as Living Area:
Yes

Heated: Yes
Finished: Yes
Enclosed: Yes
Contiguous:
Yes Permitted:
Yes Wet Space:
No Addition:
No Conversion:
No

10 Floor 1 - Hall



Dimensions: 6'0" x 5'2"
Area: 31 sq. ft
Counted as Living Area:
Yes

Heated: Yes
Finished: Yes
Enclosed: Yes
Contiguous:
Yes Permitted:
Yes Wet Space:
No Addition:
No Conversion:
No

11 Floor 1 - Family Room



Dimensions: 19'7" x 16'6"
Area: 325 sq. ft
Counted as Living Area:
Yes

Heated: Yes
Finished: Yes
Enclosed: Yes
Contiguous:
Yes Permitted:
Yes Wet Space:
No Addition:
No Conversion:
No

128 123 Street Northwest, Tulalip, Snohomish County, Washington, United States, 98271

12 Floor 1 - Kitchen



Dimensions: 10'9" x 14'11"
Area: 160 sq. ft
Counted as Living Area:
Yes

Heated: Yes
Finished: Yes
Enclosed: Yes
Contiguous:
Yes Permitted:
Yes Wet Space:
No Addition:
No Conversion:
No

13 Floor 2 - Open To Below



Dimensions: 11'0" x 13'9"
Area: 152 sq. ft
Counted as Living Area: No

Heated: No
Finished: No
Enclosed: No
Contiguous: Yes
Permitted: No
Wet Space: No
Addition: No
Conversion: No

14 Floor 2 - W.i.c.



Dimensions: 5'10" x 8'8"
Area: 51 sq. ft
Counted as Living Area:
Yes

Heated: Yes
Finished: Yes
Enclosed: Yes
Contiguous:
Yes Permitted:
Yes Wet Space:
No Addition:
No Conversion:
No

128 123 Street Northwest, Tulalip, Snohomish County, Washington, United States, 98271

15 Floor 2 - Wc



Dimensions: 2'11" x 6'4"
Area: 19 sq. ft
Counted as Living Area:
Yes

Heated: Yes
Finished: Yes
Enclosed: Yes
Contiguous:
Yes
Permitted: Yes
Wet Space: Yes
Addition: No
Conversion: No

16 Floor 2 - Hall



Dimensions: 17'0" x 6'3"
Area: 165 sq. ft
Counted as Living Area:
Yes

Heated: Yes
Finished: Yes
Enclosed: Yes
Contiguous:
Yes Permitted:
Yes Wet Space:
No Addition:
No Conversion:
No

17 Floor 2 - Open To Below



Dimensions: 11'7" x 11'10"
Area: 98 sq. ft
Counted as Living Area: No

Heated: No
Finished: No
Enclosed: No
Contiguous: Yes
Permitted: No
Wet Space: No
Addition: No
Conversion: No

128 123 Street Northwest, Tulalip, Snohomish County, Washington, United States, 98271

18 Floor 2 - Primary Bath



Dimensions: 15'2" x 12'11"
Area: 130 sq. ft
Counted as Living Area:
Yes

Heated: Yes
Finished: Yes
Enclosed: Yes
Contiguous:
Yes
Permitted: Yes
Wet Space: Yes
Addition: No
Conversion: No

19 Floor 2 - Hall



Dimensions: 5'10" x 3'8"
Area: 22 sq. ft
Counted as Living Area:
Yes

Heated: Yes
Finished: Yes
Enclosed: Yes
Contiguous:
Yes Permitted:
Yes Wet Space:
No Addition:
No Conversion:
No

20 Floor 2 - Exercise Room



Dimensions: 12'11" x 15'7"
Area: 202 sq. ft
Counted as Living Area:
Yes

Heated: Yes
Finished: Yes
Enclosed: Yes
Contiguous:
Yes Permitted:
Yes Wet Space:
No Addition:
No Conversion:
No

128 123 Street Northwest, Tulalip, Snohomish County, Washington, United States, 98271

21 Floor 2 - Laundry



Dimensions: 7'0" x 9'4"
Area: 66 sq. ft
Counted as Living Area:
Yes

Heated: Yes
Finished: Yes
Enclosed: Yes
Contiguous:
Yes Permitted:
Yes Wet Space:
No Addition:
No Conversion:
No

22 Floor 2 - Bedroom



Dimensions: 10'5" x 11'0"
Area: 105 sq. ft
Counted as Living Area:
Yes

Heated: Yes
Finished: Yes
Enclosed: Yes
Contiguous:
Yes Permitted:
Yes Wet Space:
No Addition:
No Conversion:
No

23 Floor 2 - Bedroom



Dimensions: 12'4" x 11'10"
Area: 120 sq. ft
Counted as Living Area:
Yes

Heated: Yes
Finished: Yes
Enclosed: Yes
Contiguous:
Yes Permitted:
Yes Wet Space:
No Addition:
No Conversion:
No

128 123 Street Northwest, Tulalip, Snohomish County, Washington, United States, 98271

24 Floor 2 - Hall



Dimensions: 29'0" x 4'5"
Area: 109 sq. ft
Counted as Living Area:
Yes

Heated: Yes
Finished: Yes
Enclosed: Yes
Contiguous:
Yes Permitted:
Yes Wet Space:
No Addition:
No Conversion:
No

25 Floor 2 - Bath



Dimensions: 4'9" x 11'10"
Area: 56 sq. ft
Counted as Living Area:
Yes

Heated: Yes
Finished: Yes
Enclosed: Yes
Contiguous:
Yes
Permitted: Yes
Wet Space: Yes
Addition: No
Conversion: No

26 Floor 2 - Primary Bedroom



Dimensions: 16'5" x 14'5"
Area: 235 sq. ft
Counted as Living Area:
Yes

Heated: Yes
Finished: Yes
Enclosed: Yes
Contiguous:
Yes Permitted:
Yes Wet Space:
No Addition:
No Conversion:
No

128 123 Street Northwest, Tulalip, Snohomish County, Washington, United States, 98271

27 Floor 2 - Bedroom



Dimensions: 10'11" x 14'2"
Area: 147 sq. ft
Counted as Living Area:
Yes

Heated: Yes
Finished: Yes
Enclosed: Yes
Contiguous:
Yes Permitted:
Yes Wet Space:
No Addition:
No Conversion:
No