

**SKG Productions**  
780.887.7491  
info@skgproductions.ca

**Date** September 15, 2024  
**Address** 61 Linkside Blvd  
**City** Spruce Grove  
**Agent** Tammy Colbow  
**Brokerage** Royal LePage  
**Property Type** Bungalow

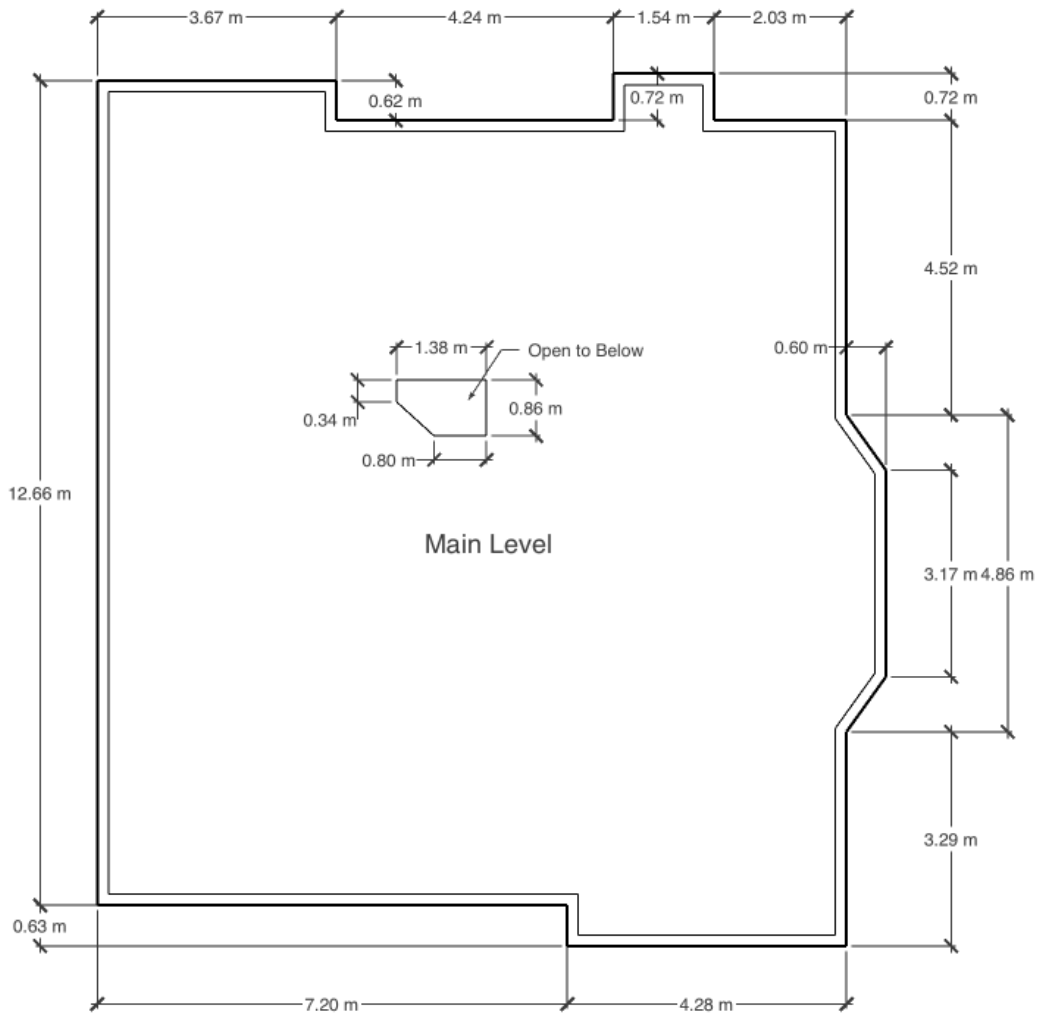


	<b>Square Feet</b>	<b>Square Meters</b>	
<b>Main Level</b>	Above Grade	1569.49	145.81
<b>Basement</b>	Below Grade	1299.10	120.69
<b>Total</b>	Above Grade	1569.49	145.81

<b>Main Level</b>	<b>Feet</b>	<b>Meters</b>
Living Room	17 ft, 9 in x 13 ft, 11 in	5.42 m x 4.24 m
Dining Room	14 ft, 2 in x 9 ft, 3 in	4.32 m x 2.81 m
Kitchen	14 ft, 0 in x 11 ft, 2 in	4.28 m x 3.41 m
Office/Den	11 ft, 5 in x 10 ft, 11 in	3.48 m x 3.33 m
Primary Bedroom	14 ft, 0 in x 15 ft, 0 in	4.27 m x 4.57 m
Ensuite	10 ft, 0 in x 9 ft, 6 in	3.06 m x 2.89 m
Bedroom 2	10 ft, 2 in x 10 ft, 8 in	3.11 m x 3.26 m
Bathroom	4 ft, 11 in x 7 ft, 6 in	1.50 m x 2.27 m
Laundry	8 ft, 11 in x 5 ft, 11 in	2.73 m x 1.81 m
Garage	23 ft, 6 in x 23 ft, 3 in	7.15 m x 7.08 m

<b>Basement</b>	<b>Feet</b>	<b>Meters</b>
Family Room	19 ft, 3 in x 11 ft, 8 in	5.86 m x 3.56 m
Rec Room	16 ft, 2 in x 23 ft, 6 in	4.94 m x 7.17 m
Bedroom	10 ft, 6 in x 10 ft, 7 in	3.20 m x 3.22 m
Bedroom	14 ft, 4 in x 12 ft, 4 in	4.36 m x 3.75 m
Bathroom	4 ft, 10 in x 8 ft, 6 in	1.48 m x 2.59 m
Utility	12 ft, 11 in x 12 ft, 1 in	3.95 m x 3.67 m
Mechanical	10 ft, 10 in x 9 ft, 9 in	3.30 m x 2.97 m

# 61 Linkside Blvd Spruce Grove



# 61 Linkside Blvd Spruce Grove

