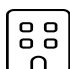







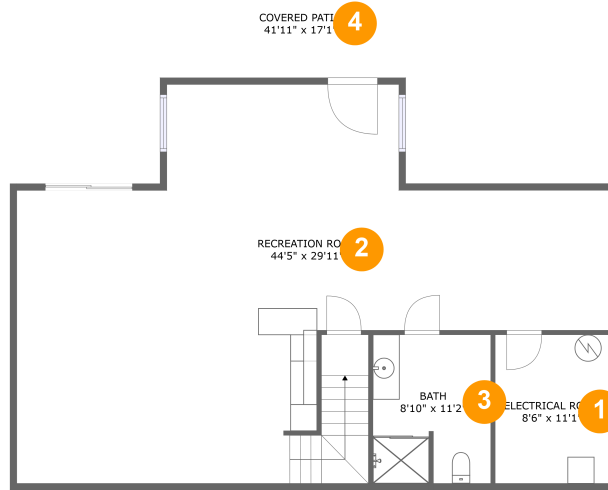
312 Daytona Drive, Hardy, Franklin County, Virginia, United States, 24101



Property Summary

 3 floors	 3 bedrooms	 3 bathrooms	 5,728 total sqft
 1 garages	 2,075 Gross Living Area sqft		

312 Daytona Drive, Hardy, Franklin County, Virginia, United States, 24101



Room Dimensions

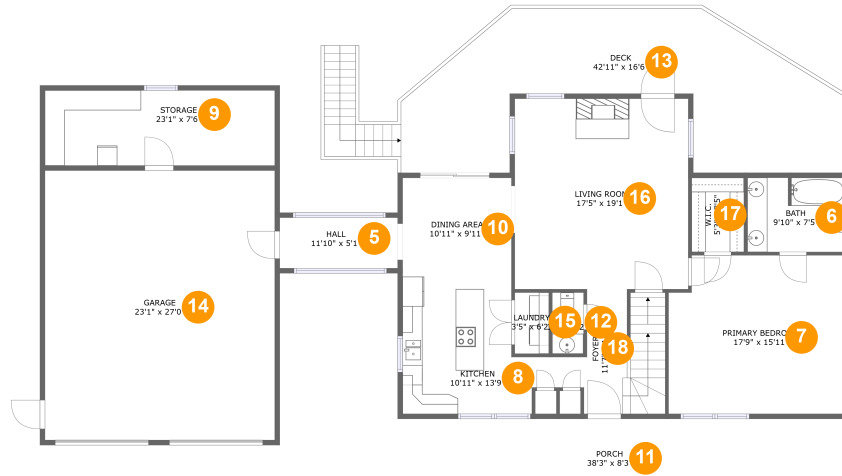
Floor 1

Total sqft: 1702

Living area: 0

#	Room name	Dimensions	Area (sqft)	Counted as Living Area
1	Electrical Room	8'6" x 11'1"	95 sq. ft	No
2	Recreation Room	44'5" x 29'11"	902 sq. ft	No
3	Bath	8'10" x 11'2"	97 sq. ft	No
4	Covered Patio	41'11" x 17'1"	512 sq. ft	No

312 Daytona Drive, Hardy, Franklin County, Virginia, United States, 24101



Room Dimensions

Floor 2

Total sqft: 2997

Living area: 1341

#	Room name	Dimensions	Area (sqft)	Counted as Living Area
5	Hall	11'10" x 5'1"	60 sq. ft	Yes
6	Bath	9'10" x 7'5"	72 sq. ft	Yes
7	Primary Bedroom	17'9" x 15'11"	273 sq. ft	Yes
8	Kitchen	10'11" x 13'9"	150 sq. ft	Yes
9	Storage	23'1" x 7'6"	174 sq. ft	No
10	Dining Area	10'11" x 9'11"	108 sq. ft	Yes
11	Porch	38'3" x 8'3"	317 sq. ft	No
12	Wc	3'2" x 6'2"	19 sq. ft	Yes
13	Deck	42'11" x 16'6"	474 sq. ft	No
14	Garage	23'1" x 27'0"	624 sq. ft	No
15	Laundry	3'5" x 6'2"	21 sq. ft	Yes

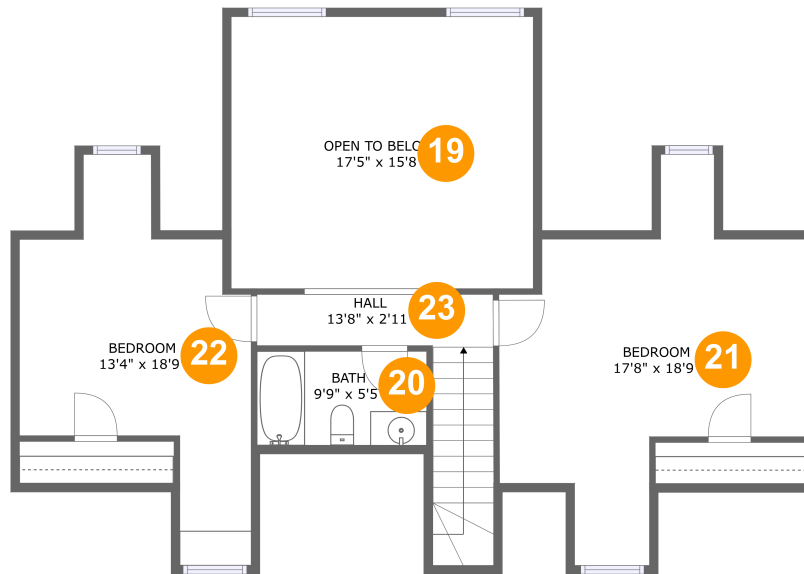
Scan captured on Thu, 09 May 2024 18:19:35 GMT

Information is calculated by CubiCasa technology; deemed highly reliable but not guaranteed.

**312 Daytona Drive, Hardy, Franklin County,
Virginia, United States, 24101**

#	Room name	Dimensions	Area (sqft)	Counted as Living Area
16	Living Room	17'5" x 19'1"	333 sq. ft	Yes
17	W.i.c.	5'3" x 7'5"	39 sq. ft	Yes
18	Foyer	11'7" x 12'6"	125 sq. ft	Yes

**312 Daytona Drive, Hardy, Franklin County,
Virginia, United States, 24101**



Room Dimensions

Floor 3

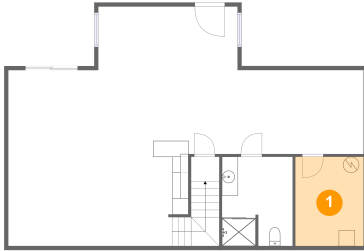
Total sqft: 1029

Living area: 734

#	Room name	Dimensions	Area (sqft)	Counted as Living Area
19	Open To Below	17'5" x 15'8"	273 sq. ft	No
20	Bath	9'9" x 5'5"	53 sq. ft	Yes
21	Bedroom	17'8" x 18'9"	252 sq. ft	Yes
22	Bedroom	13'4" x 18'9"	196 sq. ft	Yes
23	Hall	13'8" x 2'11"	87 sq. ft	Yes

312 Daytona Drive, Hardy, Franklin County, Virginia, United States, 24101

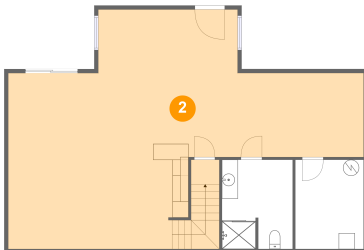
1 Floor 1 - Electrical Room



Dimensions: 8'6" x 11'1"
Area: 95 sq. ft
Counted as Living Area: No

Heated: No
Finished: No
Enclosed: Yes
Contiguous: Yes
Permitted: Yes
Wet Space: No
Addition: No
Conversion: No

2 Floor 1 - Recreation Room

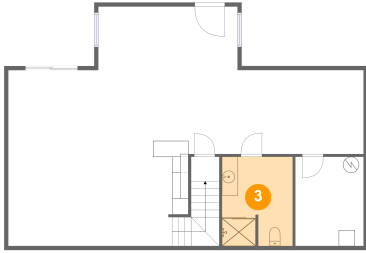


Dimensions: 44'5" x 29'11"
Area: 902 sq. ft
Counted as Living Area: No

Heated: Yes
Finished: Yes
Enclosed: Yes
Contiguous: No
Permitted: Yes
Wet Space: No
Addition: No
Conversion: No

**312 Daytona Drive, Hardy, Franklin County,
Virginia, United States, 24101**

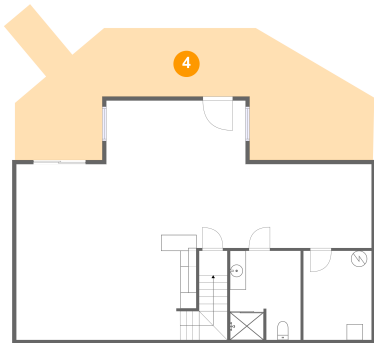
3 Floor 1 - Bath



Dimensions: 8'10" x 11'2"
Area: 97 sq. ft
Counted as Living Area: No

Heated: Yes
Finished: Yes
Enclosed: Yes
Contiguous: No
Permitted: Yes
Wet Space: Yes
Addition: No
Conversion: No

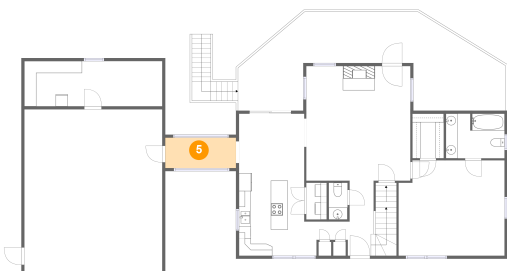
4 Floor 1 - Covered Patio



Dimensions: 41'11" x 17'1"
Area: 512 sq. ft
Counted as Living Area: No

Heated: No
Finished: Yes
Enclosed: No
Contiguous: Yes
Permitted: Yes
Wet Space: No
Addition: No
Conversion: No

5 Floor 2 - Hall

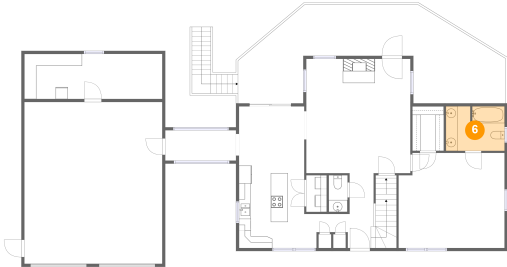


Dimensions: 11'10" x 5'1"
Area: 60 sq. ft
Counted as Living Area:
Yes

Heated: Yes
Finished: Yes
Enclosed: Yes
Contiguous:
Yes
Permitted: Yes
Wet Space: No
Addition: No
Conversion: No

312 Daytona Drive, Hardy, Franklin County, Virginia, United States, 24101

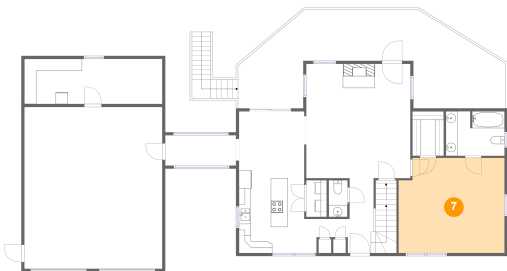
6 Floor 2 - Bath



Dimensions: 9'10" x 7'5"
Area: 72 sq. ft
Counted as Living Area:
Yes

Heated: Yes
Finished: Yes
Enclosed: Yes
Contiguous:
Yes
Permitted: Yes
Wet Space: Yes
Addition: No
Conversion: No

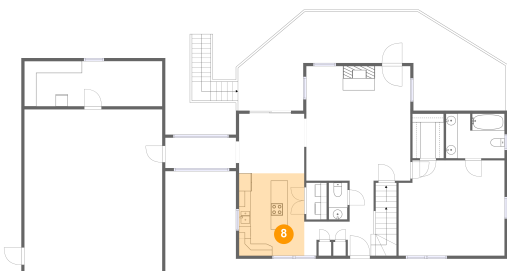
7 Floor 2 - Primary Bedroom



Dimensions: 17'9" x 15'11"
Area: 273 sq. ft
Counted as Living Area:
Yes

Heated: Yes
Finished: Yes
Enclosed: Yes
Contiguous:
Yes
Permitted: Yes
Wet Space: No
Addition: No
Conversion: No

8 Floor 2 - Kitchen

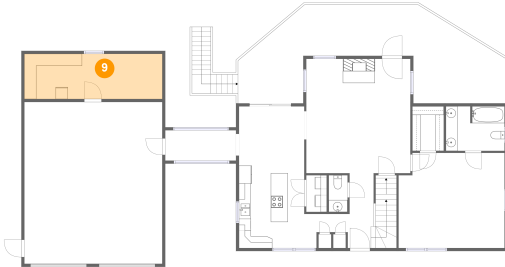


Dimensions: 10'11" x 13'9"
Area: 150 sq. ft
Counted as Living Area:
Yes

Heated: Yes
Finished: Yes
Enclosed: Yes
Contiguous:
Yes
Permitted: Yes
Wet Space: No
Addition: No
Conversion: No

312 Daytona Drive, Hardy, Franklin County, Virginia, United States, 24101

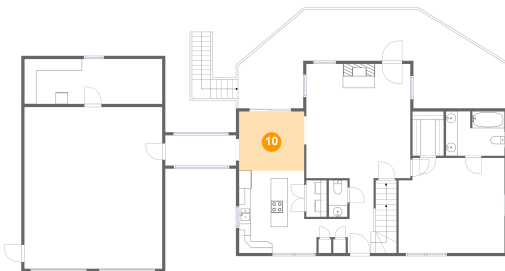
9 Floor 2 - Storage



Dimensions: 23'1" x 7'6"
Area: 174 sq. ft
Counted as Living Area: No

Heated: No
Finished: No
Enclosed: No
Contiguous: Yes
Permitted: Yes
Wet Space: No
Addition: No
Conversion: No

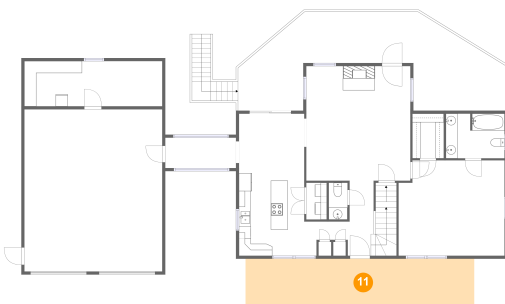
10 Floor 2 - Dining Area



Dimensions: 10'11" x 9'11"
Area: 108 sq. ft
Counted as Living Area:
Yes

Heated: Yes
Finished: Yes
Enclosed: Yes
Contiguous:
Yes
Permitted: Yes
Wet Space: No
Addition: No
Conversion: No

11 Floor 2 - Porch

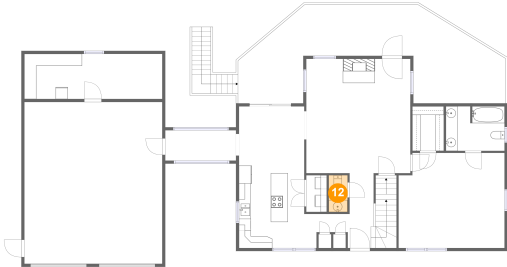


Dimensions: 38'3" x 8'3"
Area: 317 sq. ft
Counted as Living Area: No

Heated: No
Finished: Yes
Enclosed: No
Contiguous: Yes
Permitted: Yes
Wet Space: No
Addition: No
Conversion: No

**312 Daytona Drive, Hardy, Franklin County,
Virginia, United States, 24101**

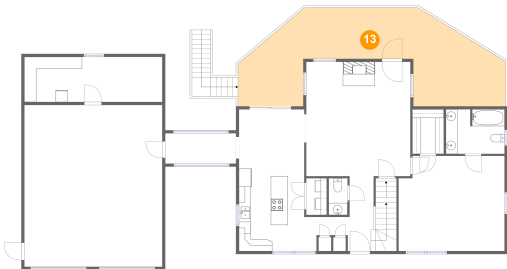
12 Floor 2 - Wc



Dimensions: 3'2" x 6'2"
Area: 19 sq. ft
Counted as Living Area:
Yes

Heated: Yes
Finished: Yes
Enclosed: Yes
Contiguous:
Yes
Permitted: Yes
Wet Space: Yes
Addition: No
Conversion: No

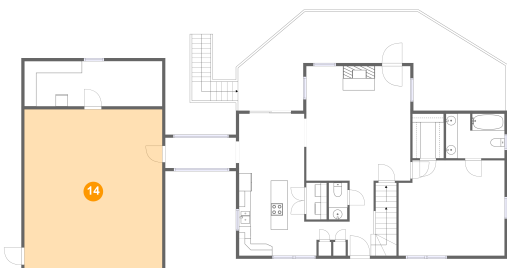
13 Floor 2 - Deck



Dimensions: 42'11" x 16'6"
Area: 474 sq. ft
Counted as Living Area: No

Heated: No
Finished: Yes
Enclosed: No
Contiguous: Yes
Permitted: Yes
Wet Space: No
Addition: No
Conversion: No

14 Floor 2 - Garage

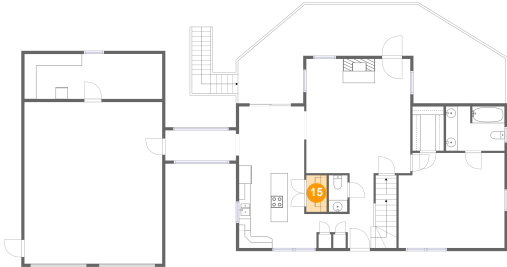


Dimensions: 23'1" x 27'0"
Area: 624 sq. ft
Counted as Living Area: No

Heated: No
Finished: No
Enclosed: Yes
Contiguous: Yes
Permitted: Yes
Wet Space: No
Addition: No
Conversion: No

312 Daytona Drive, Hardy, Franklin County, Virginia, United States, 24101

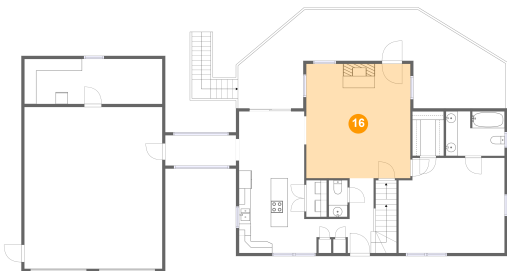
15 Floor 2 - Laundry



Dimensions: 3'5" x 6'2"
Area: 21 sq. ft
Counted as Living Area:
Yes

Heated: Yes
Finished: Yes
Enclosed: Yes
Contiguous:
Yes
Permitted: Yes
Wet Space: No
Addition: No
Conversion: No

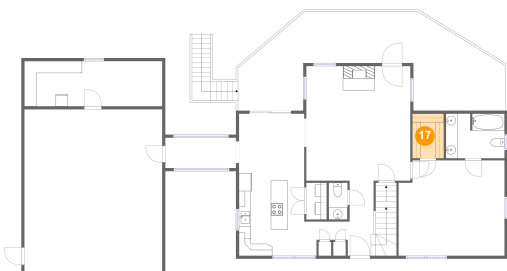
16 Floor 2 - Living Room



Dimensions: 17'5" x 19'1"
Area: 333 sq. ft
Counted as Living Area:
Yes

Heated: Yes
Finished: Yes
Enclosed: Yes
Contiguous:
Yes
Permitted: Yes
Wet Space: No
Addition: No
Conversion: No

17 Floor 2 - W.i.c.

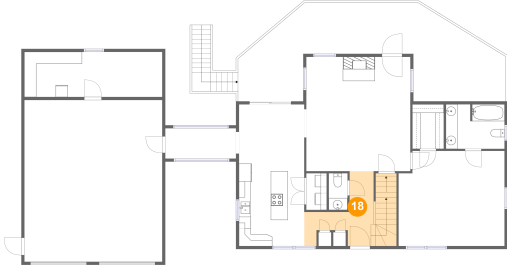


Dimensions: 5'3" x 7'5"
Area: 39 sq. ft
Counted as Living Area:
Yes

Heated: Yes
Finished: Yes
Enclosed: Yes
Contiguous:
Yes
Permitted: Yes
Wet Space: No
Addition: No
Conversion: No

**312 Daytona Drive, Hardy, Franklin County,
Virginia, United States, 24101**

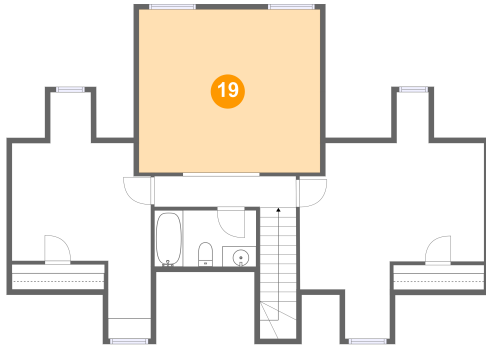
18 Floor 2 - Foyer



Dimensions: 11'7" x 12'6"
Area: 125 sq. ft
Counted as Living Area:
Yes

Heated: Yes
Finished: Yes
Enclosed: Yes
Contiguous:
Yes
Permitted: Yes
Wet Space: No
Addition: No
Conversion: No

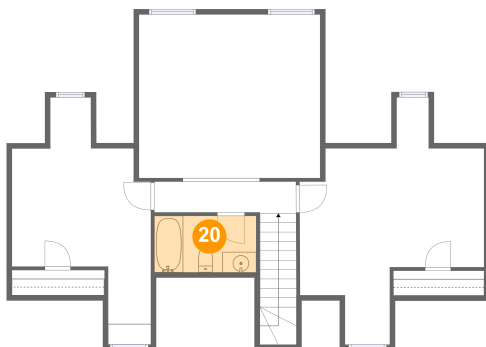
19 Floor 3 - Open To Below



Dimensions: 17'5" x 15'8"
Area: 273 sq. ft
Counted as Living Area: No

Heated: No
Finished: No
Enclosed: No
Contiguous: Yes
Permitted: No
Wet Space: No
Addition: No
Conversion: No

20 Floor 3 - Bath

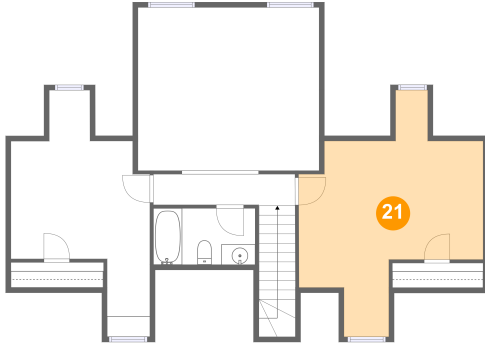


Dimensions: 9'9" x 5'5"
Area: 53 sq. ft
Counted as Living Area:
Yes

Heated: Yes
Finished: Yes
Enclosed: Yes
Contiguous:
Yes
Permitted: Yes
Wet Space: Yes
Addition: No
Conversion: No

**312 Daytona Drive, Hardy, Franklin County,
Virginia, United States, 24101**

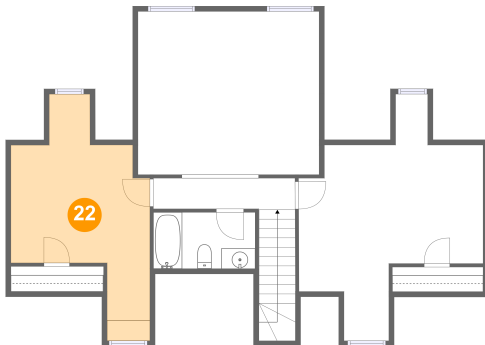
21 Floor 3 - Bedroom



Dimensions: 17'8" x 18'9"
Area: 252 sq. ft
Counted as Living Area:
Yes

Heated: Yes
Finished: Yes
Enclosed: Yes
Contiguous:
Yes
Permitted: Yes
Wet Space: No
Addition: No
Conversion: No

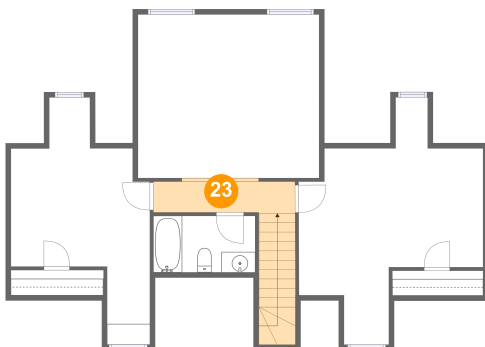
22 Floor 3 - Bedroom



Dimensions: 13'4" x 18'9"
Area: 196 sq. ft
Counted as Living Area:
Yes

Heated: Yes
Finished: Yes
Enclosed: Yes
Contiguous:
Yes
Permitted: Yes
Wet Space: No
Addition: No
Conversion: No

23 Floor 3 - Hall



Dimensions: 13'8" x 2'11"
Area: 87 sq. ft
Counted as Living Area:
Yes

Heated: Yes
Finished: Yes
Enclosed: Yes
Contiguous:
Yes
Permitted: Yes
Wet Space: No
Addition: No
Conversion: No