


1469 Windsong, Pocatello, Bannock County, Idaho, United States, 83201



Property summary

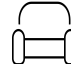
 **1** Garages

 **6** Bedrooms

 **3** Bathrooms

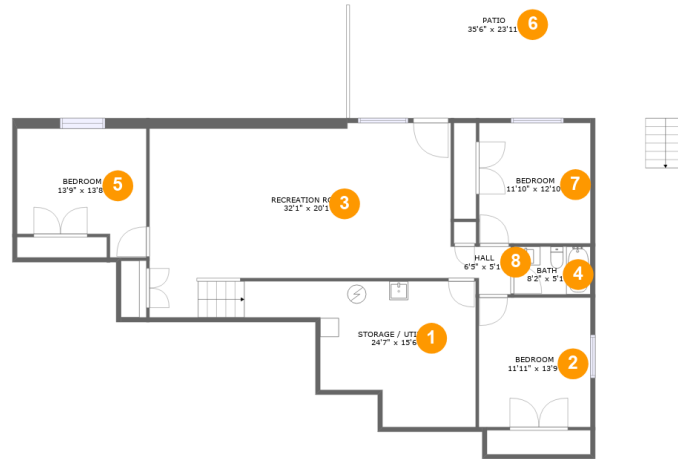
 **0** Half baths

 **2** Floors

 **3,072** Gross living area sqft

 **5,221** Total sqft

1469 Windsong, Pocatello, Bannock County, Idaho, United States, 83201



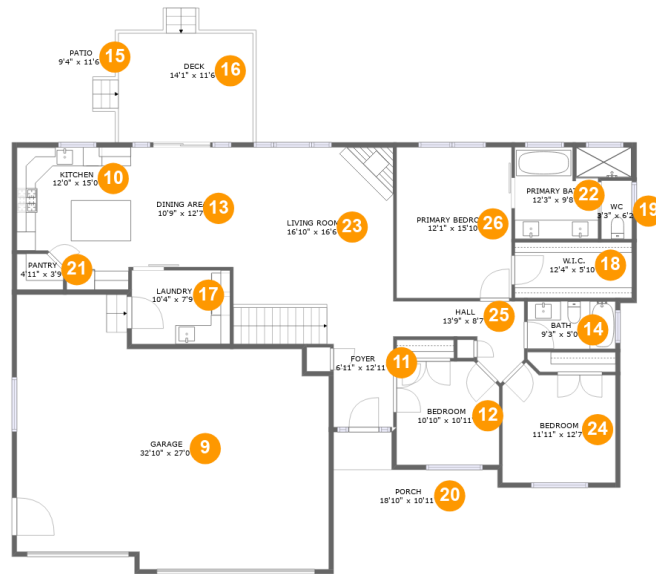
Room dimensions

Floor 1

Total sqft: 2195 Living area: 1351

#		Dimensions	sqft	Counted as living area
1	Storage / Utility	24'7" x 15'6"	262 sq. ft	No
2	Bedroom	11'11" x 13'9"	164 sq. ft	Yes
3	Recreation Room	32'1" x 20'1"	559 sq. ft	Yes
4	Bath	8'2" x 5'1"	41 sq. ft	Yes
5	Bedroom	13'9" x 13'8"	164 sq. ft	Yes
6	Outdoor	35'6" x 23'11"	564 sq. ft	No
7	Bedroom	11'10" x 12'10"	152 sq. ft	Yes
8	Hall	6'5" x 5'1"	27 sq. ft	Yes

1469 Windsong, Pocatello, Bannock County, Idaho, United States, 83201



Room dimensions

Floor 2

Total sqft: 3026 Living area: 1721

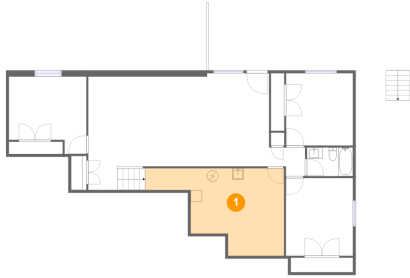
#		Dimensions	sqft	Counted as living area
9	Garage	32'10" x 27'0"	794 sq. ft	No
10	Kitchen	12'0" x 15'0"	160 sq. ft	Yes
11	Entry	6'11" x 12'11"	125 sq. ft	Yes
12	Bedroom	10'10" x 10'11"	114 sq. ft	Yes
13	Dining Room	10'9" x 12'7"	136 sq. ft	Yes
14	Bath	9'3" x 5'0"	46 sq. ft	Yes
15	Outdoor	9'4" x 11'6"	111 sq. ft	No
16	Outdoor	14'1" x 11'6"	162 sq. ft	No
17	Utility	10'4" x 7'9"	80 sq. ft	Yes
18	Cl	12'4" x 5'10"	72 sq. ft	Yes
19	Bath	3'3" x 6'2"	20 sq. ft	Yes

**1469 Windsong, Pocatello, Bannock County, Idaho,
United States, 83201**

#		Dimensions	sqft	Counted as living area
20	Outdoor	18'10" x 10'11"	177 sq. ft	No
21	Pantry	4'11" x 3'9"	17 sq. ft	No
22	Bath	12'3" x 9'8"	95 sq. ft	Yes
23	Living Room	16'10" x 16'6"	278 sq. ft	Yes
24	Bedroom	11'11" x 12'7"	136 sq. ft	Yes
25	Hall	13'9" x 8'7"	69 sq. ft	Yes
26	Bedroom	12'1" x 15'10"	192 sq. ft	Yes

1469 Windsong, Pocatello, Bannock County, Idaho, United States, 83201

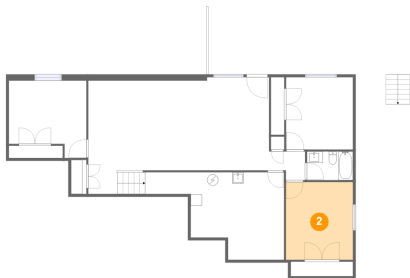
1 Floor 1 - Storage / Utility



Dimensions: 24'7" x 15'6"
Area: 262 sq. ft
Counted as living area: No

Heated: No
Finished: No
Enclosed: No
Contiguous: Yes
Permitted: Yes
Wet space: No
Addition: No
Conversion: No

2 Floor 1 - Bedroom

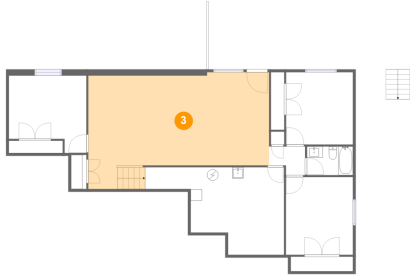


Dimensions: 11'11" x 13'9"
Area: 164 sq. ft
Counted as living area: Yes

Heated: Yes
Finished: Yes
Enclosed: Yes
Contiguous: Yes
Permitted: Yes
Wet space: No
Addition: No
Conversion: No

1469 Windsong, Pocatello, Bannock County, Idaho, United States, 83201

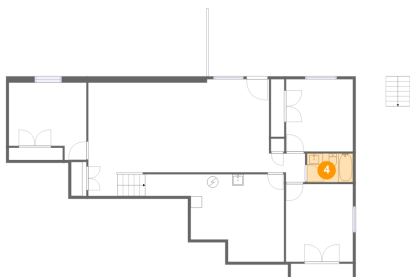
3 Floor 1 - Recreation Room



Dimensions: 32'1" x 20'1"
Area: 559 sq. ft
Counted as living area: Yes

Heated: Yes
Finished: Yes
Enclosed: Yes
Contiguous: Yes
Permitted: Yes
Wet space: No
Addition: No
Conversion: No

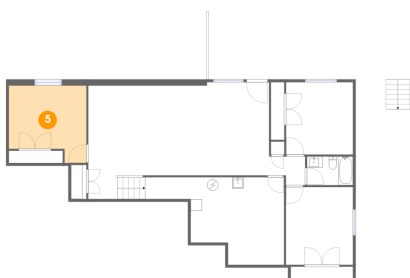
4 Floor 1 - Bath



Dimensions: 8'2" x 5'1"
Area: 41 sq. ft
Counted as living area: Yes

Heated: Yes
Finished: Yes
Enclosed: Yes
Contiguous: Yes
Permitted: Yes
Wet space: Yes
Addition: No
Conversion: No

5 Floor 1 - Bedroom

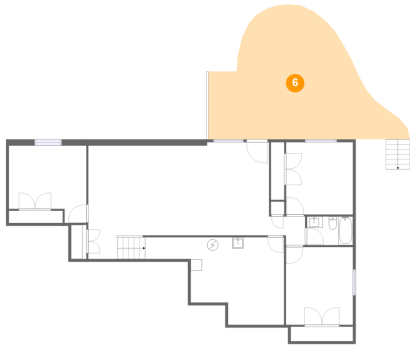


Dimensions: 13'9" x 13'8"
Area: 164 sq. ft
Counted as living area: Yes

Heated: Yes
Finished: Yes
Enclosed: Yes
Contiguous: Yes
Permitted: Yes
Wet space: No
Addition: No
Conversion: No

**1469 Windsong, Pocatello, Bannock County, Idaho,
United States, 83201**

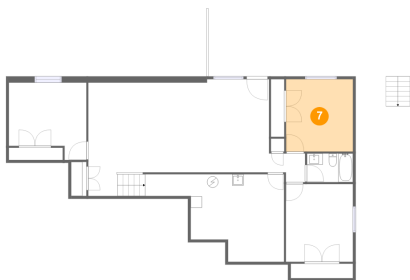
6 Floor 1 - Outdoor



Dimensions: 35'6" x 23'11"
Area: 564 sq. ft
Counted as living area: No

Heated: No
Finished: Yes
Enclosed: No
Contiguous: Yes
Permitted: Yes
Wet space: No
Addition: No
Conversion: No

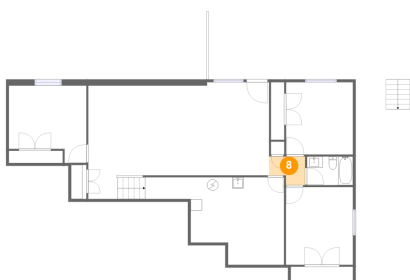
7 Floor 1 - Bedroom



Dimensions: 11'10" x 12'10"
Area: 152 sq. ft
Counted as living area: Yes

Heated: Yes
Finished: Yes
Enclosed: Yes
Contiguous: Yes
Permitted: Yes
Wet space: No
Addition: No
Conversion: No

8 Floor 1 - Hall

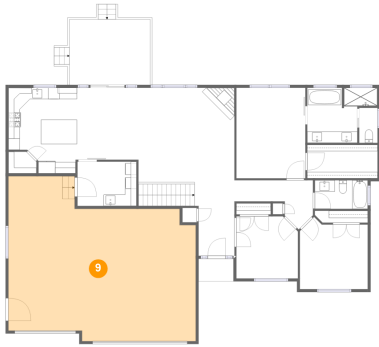


Dimensions: 6'5" x 5'1"
Area: 27 sq. ft
Counted as living area: Yes

Heated: Yes
Finished: Yes
Enclosed: Yes
Contiguous: Yes
Permitted: Yes
Wet space: No
Addition: No
Conversion: No

1469 Windsong, Pocatello, Bannock County, Idaho, United States, 83201

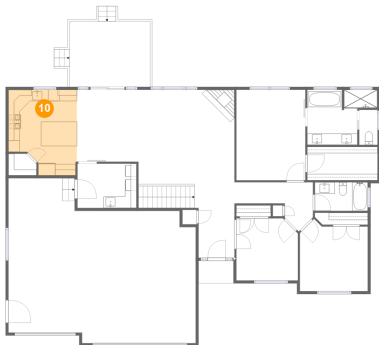
9 Floor 2 - Garage



Dimensions: 32'10" x 27'0"
Area: 794 sq. ft
Counted as living area: No

Heated: No
Finished: No
Enclosed: Yes
Contiguous: Yes
Permitted: Yes
Wet space: No
Addition: No
Conversion: No

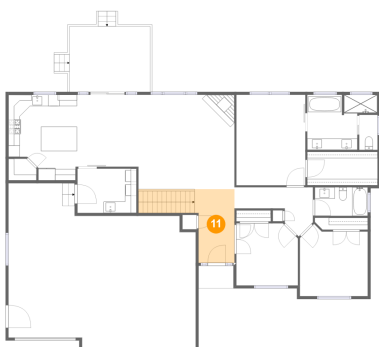
10 Floor 2 - Kitchen



Dimensions: 12'0" x 15'0"
Area: 160 sq. ft
Counted as living area: Yes

Heated: Yes
Finished: Yes
Enclosed: Yes
Contiguous: Yes
Permitted: Yes
Wet space: No
Addition: No
Conversion: No

11 Floor 2 - Entry

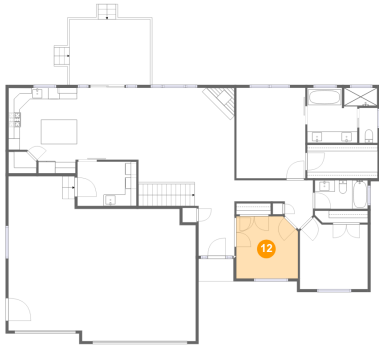


Dimensions: 6'11" x 12'11"
Area: 125 sq. ft
Counted as living area: Yes

Heated: Yes
Finished: Yes
Enclosed: Yes
Contiguous: Yes
Permitted: Yes
Wet space: No
Addition: No
Conversion: No

**1469 Windsong, Pocatello, Bannock County, Idaho,
United States, 83201**

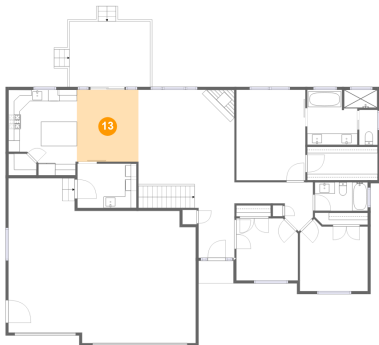
12 Floor 2 - Bedroom



Dimensions: 10'10" x 10'11"
Area: 114 sq. ft
Counted as living area: Yes

Heated: Yes
Finished: Yes
Enclosed: Yes
Contiguous: Yes
Permitted: Yes
Wet space: No
Addition: No
Conversion: No

13 Floor 2 - Dining Room



Dimensions: 10'9" x 12'7"
Area: 136 sq. ft
Counted as living area: Yes

Heated: Yes
Finished: Yes
Enclosed: Yes
Contiguous: Yes
Permitted: Yes
Wet space: No
Addition: No
Conversion: No

14 Floor 2 - Bath

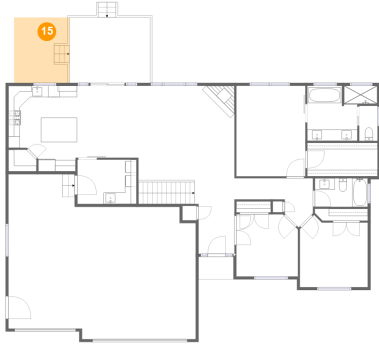


Dimensions: 9'3" x 5'0"
Area: 46 sq. ft
Counted as living area: Yes

Heated: Yes
Finished: Yes
Enclosed: Yes
Contiguous: Yes
Permitted: Yes
Wet space: Yes
Addition: No
Conversion: No

1469 Windsong, Pocatello, Bannock County, Idaho, United States, 83201

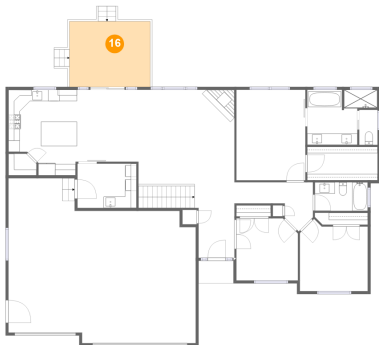
15 Floor 2 - Outdoor



Dimensions: 9'4" x 11'6"
Area: 111 sq. ft
Counted as living area: No

Heated: No
Finished: Yes
Enclosed: No
Contiguous: Yes
Permitted: Yes
Wet space: No
Addition: No
Conversion: No

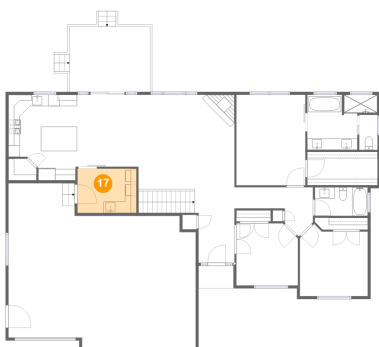
16 Floor 2 - Outdoor



Dimensions: 14'1" x 11'6"
Area: 162 sq. ft
Counted as living area: No

Heated: No
Finished: Yes
Enclosed: No
Contiguous: Yes
Permitted: Yes
Wet space: No
Addition: No
Conversion: No

17 Floor 2 - Utility

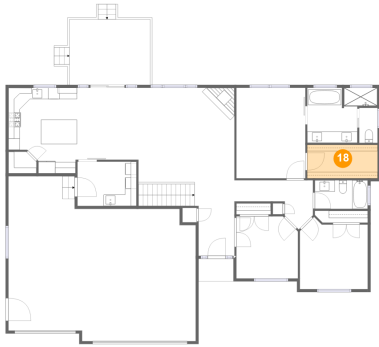


Dimensions: 10'4" x 7'9"
Area: 80 sq. ft
Counted as living area: Yes

Heated: Yes
Finished: Yes
Enclosed: Yes
Contiguous: Yes
Permitted: Yes
Wet space: No
Addition: No
Conversion: No

1469 Windsong, Pocatello, Bannock County, Idaho, United States, 83201

18 Floor 2 - Cl



Dimensions: 12'4" x 5'10"
Area: 72 sq. ft
Counted as living area: Yes

Heated: Yes
Finished: Yes
Enclosed: Yes
Contiguous: Yes
Permitted: Yes
Wet space: No
Addition: No
Conversion: No

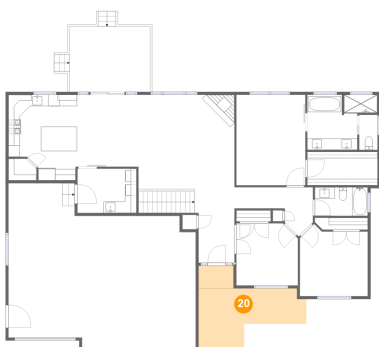
19 Floor 2 - Bath



Dimensions: 3'3" x 6'2"
Area: 20 sq. ft
Counted as living area: Yes

Heated: Yes
Finished: Yes
Enclosed: Yes
Contiguous: Yes
Permitted: Yes
Wet space: Yes
Addition: No
Conversion: No

20 Floor 2 - Outdoor



Dimensions: 18'10" x 10'11"
Area: 177 sq. ft
Counted as living area: No

Heated: No
Finished: Yes
Enclosed: No
Contiguous: Yes
Permitted: Yes
Wet space: No
Addition: No
Conversion: No

1469 Windsong, Pocatello, Bannock County, Idaho, United States, 83201

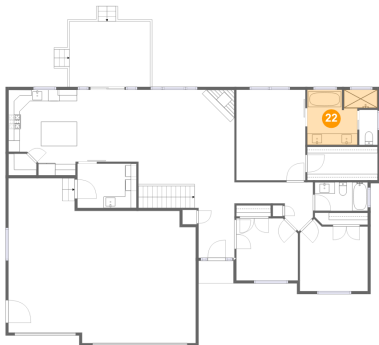
21 Floor 2 - Pantry



Dimensions: 4'11" x 3'9"
Area: 17 sq. ft
Counted as living area: No

Heated: Yes
Finished: Yes
Enclosed: Yes
Contiguous: Yes
Permitted: Yes
Wet space: No
Addition: No
Conversion: No

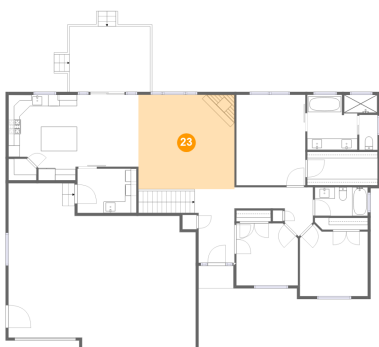
22 Floor 2 - Bath



Dimensions: 12'3" x 9'8"
Area: 95 sq. ft
Counted as living area: Yes

Heated: Yes
Finished: Yes
Enclosed: Yes
Contiguous: Yes
Permitted: Yes
Wet space: Yes
Addition: No
Conversion: No

23 Floor 2 - Living Room

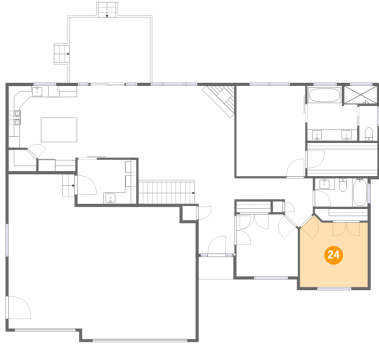


Dimensions: 16'10" x 16'6"
Area: 278 sq. ft
Counted as living area: Yes

Heated: Yes
Finished: Yes
Enclosed: Yes
Contiguous: Yes
Permitted: Yes
Wet space: No
Addition: No
Conversion: No

1469 Windsong, Pocatello, Bannock County, Idaho, United States, 83201

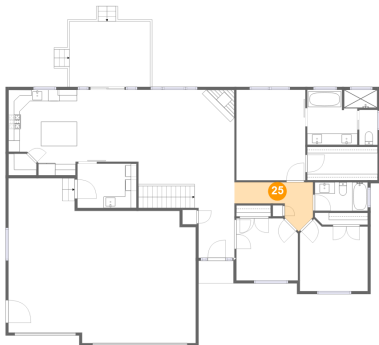
24 Floor 2 - Bedroom



Dimensions: 11'11" x 12'7"
Area: 136 sq. ft
Counted as living area: Yes

Heated: Yes
Finished: Yes
Enclosed: Yes
Contiguous: Yes
Permitted: Yes
Wet space: No
Addition: No
Conversion: No

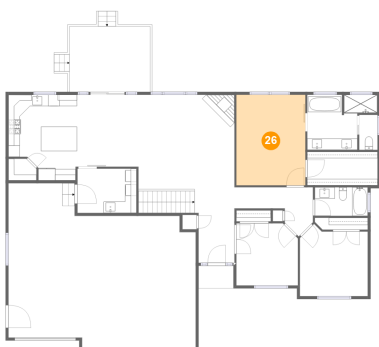
25 Floor 2 - Hall



Dimensions: 13'9" x 8'7"
Area: 69 sq. ft
Counted as living area: Yes

Heated: Yes
Finished: Yes
Enclosed: Yes
Contiguous: Yes
Permitted: Yes
Wet space: No
Addition: No
Conversion: No

26 Floor 2 - Bedroom



Dimensions: 12'1" x 15'10"
Area: 192 sq. ft
Counted as living area: Yes

Heated: Yes
Finished: Yes
Enclosed: Yes
Contiguous: Yes
Permitted: Yes
Wet space: No
Addition: No
Conversion: No