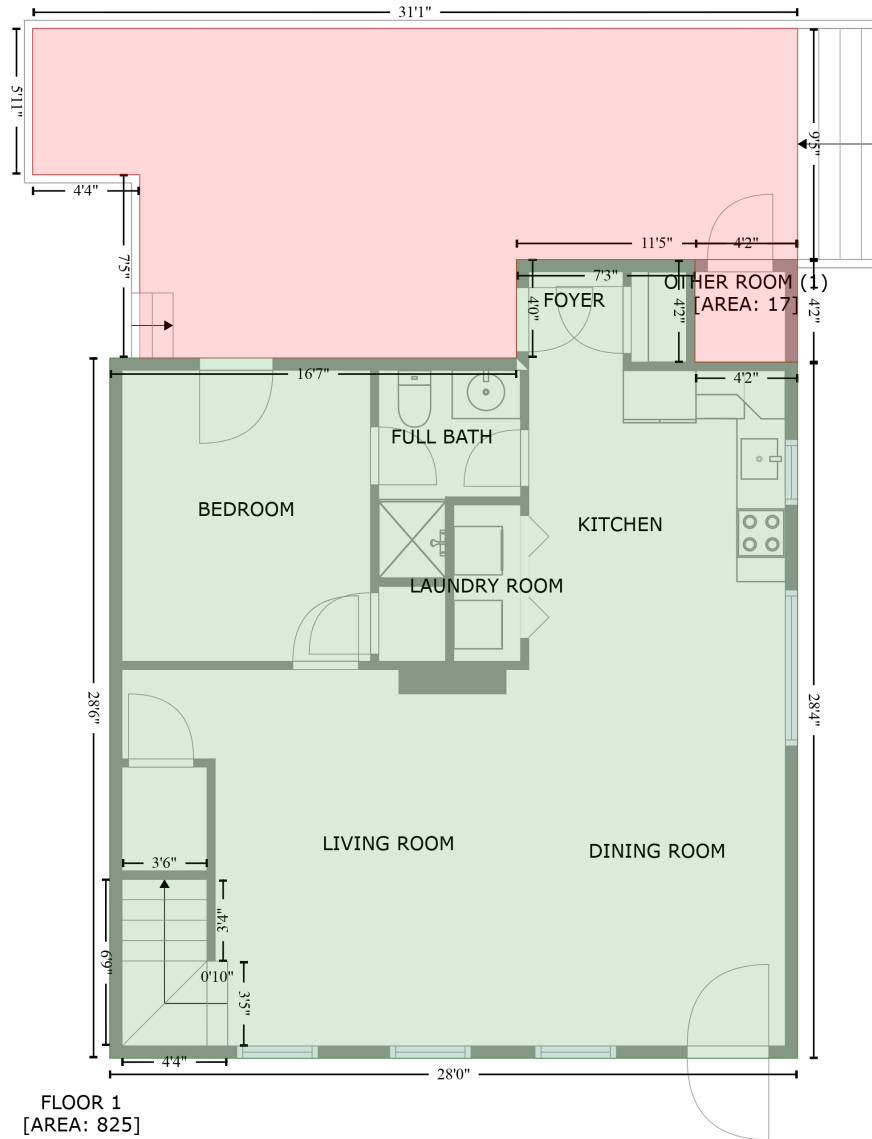


# 7610 Sarah Drive, Westport, Denver, Lincoln County, North Carolina, United States, 28037

Gross Living Area: 1333 sq. ft

DECK (2)  
[AREA: 339]



Space	Area (sq. ft)	Calculation <small>Coordinate Polygon Area Algorithm using inches</small>
FLOOR 1 (Living area)	825	$-\left((361.5 + 361.5) * (137.9 - 188) + (361.5 + 411.6) * (188 - 188) + (411.6 + 411.6) * (188 - 527.8) + (411.6 + 75.9) * (527.8 - 527.8) + (75.9 + 75.9) * (527.8 - 185.9) + (75.9 + 274.4) * (185.9 - 185.9) + (274.4 + 274.4) * (185.9 - 137.9) + (274.4 + 361.5) * (137.9 - 137.9)\right) * 0.5 * 0.00694$
OTHER ROOM (Non-living area)	17	$-\left((411.6 + 411.6) * (137.9 - 188) + (411.6 + 361.5) * (188 - 188) + (361.5 + 361.5) * (188 - 137.9) + (361.5 + 411.6) * (137.9 - 137.9)\right) * 0.5 * 0.00694$
DECK	339	$-\left((411.6 + 411.6) * (25 - 137.9) + (411.6 + 274.4) * (137.9 - 137.9) + (274.4 + 274.4) * (137.9 - 137.9)\right) * 0.5 * 0.00694$

# 7610 Sarah Drive, Westport, Denver, Lincoln County, North Carolina, United States, 28037

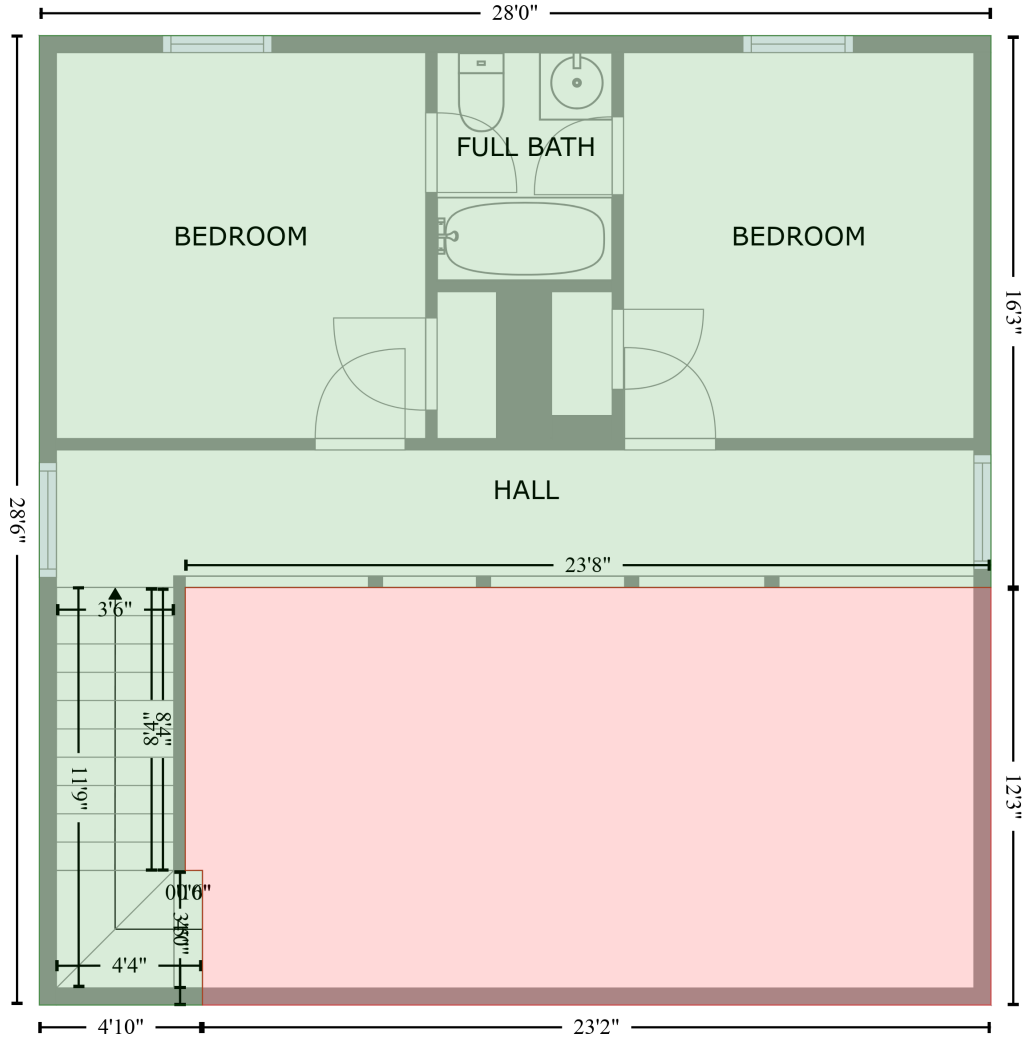
Gross Living Area: 1333 sq. ft

Space	Area (sq. ft)	Calculation <small>Coordinate Polygon Area Algorithm using inches</small>
(Non-living area)		$185.9 + (274.4 + 90.6) * (185.9 - 185.9) + (90.6 + 90.6) * (185.9 - 96.5) + (90.6 + 38.3) * (96.5 - 96.5) + (38.3 + 38.3) * (96.5 - 25.1) + (38.3 + 411.6) * (25.1 - 25) * 0.5 * 0.00694$

# 7610 Sarah Drive, Westport, Denver, Lincoln County, North Carolina, United States, 28037

Gross Living Area: 1333 sq. ft

FLOOR 2  
[AREA: 508]



OPEN TO BELOW (1)  
[AREA: 289]

Space	Area (sq. ft)	Calculation <small>Coordinate Polygon Area Algorithm using inches</small>
FLOOR 2 (Living area)	508	$-((440 + 440) * (196.8 - 391.5) + (440 + 155.8) * (391.5 - 391.5) + (155.8 + 155.8) * (391.5 - 491.3) + (155.8 + 161.8) * (491.3 - 491.2) + (161.8 + 161.8) * (491.2 - 538.7) + (161.8 + 104.3) * (538.7 - 538.7) + (104.3 + 104.3) * (538.7 - 196.8) + (104.3 + 440) * (196.8 - 196.8)) * 0.5 * 0.00694$
OPEN TO BELOW (Non-living area)	289	$-((440 + 440) * (391.5 - 538.7) + (440 + 161.8) * (538.7 - 538.7) + (161.8 + 161.8) * (538.7 - 491.2) + (161.8 + 155.8) * (491.2 - 491.3) + (155.8 + 155.8) * (491.3 - 391.5) + (155.8 + 440) * (391.5 - 391.5)) * 0.5 * 0.00694$

# 7610 Sarah Drive, Westport, Denver, Lincoln County, North Carolina, United States, 28037

Gross Living Area: 1333 sq. ft

Space	Area (sq. ft)	Calculation <small>Coordinate Polygon Area Algorithm using inches</small>
		$(391.5 - 391.5) * 0.5 * 0.00694$