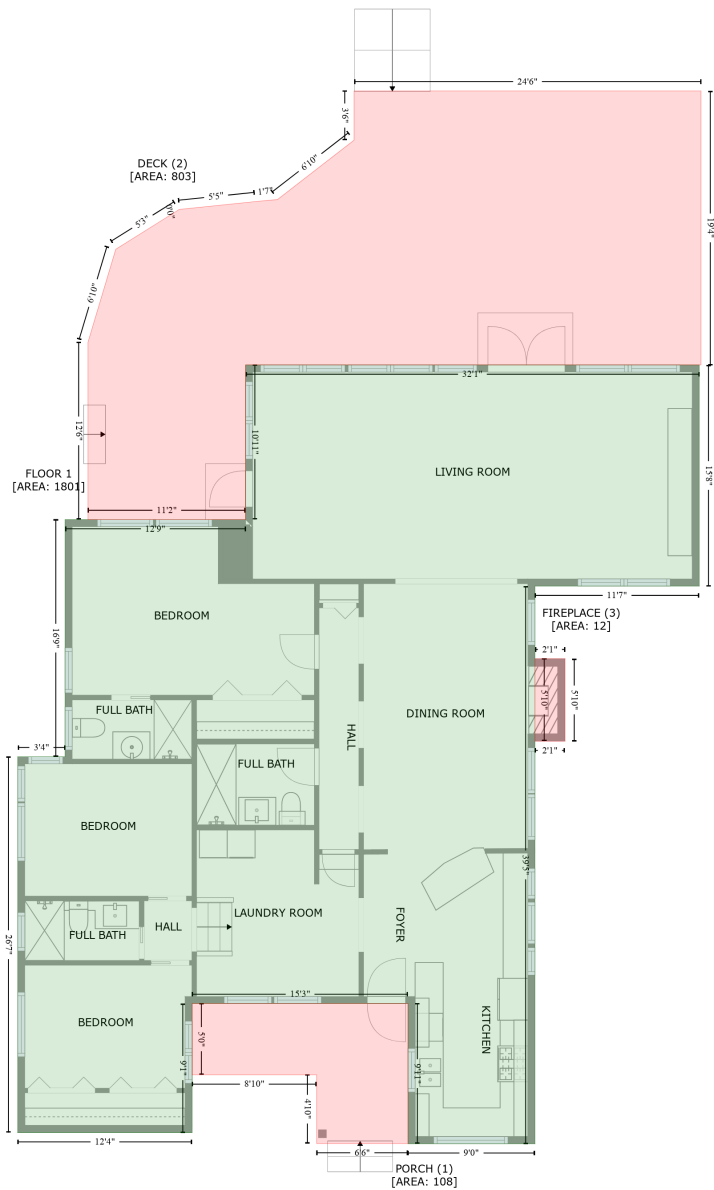


859 Bay Esplanade, 700 Island Way, Clearwater Beach, Pinellas County, Florida, United States, 33767

Gross Living Area: 1801 sq. ft



Space	Area (sq. ft)	Calculation
FLOOR 1 (Living area)	1801	Coordinate Polygon Area Algorithm using inches $-((596.9 + 596.9) * (320.8 - 508.3) + (596.9 + 457.6) * (508.3 - 508.3) + (457.6 + 457.6) * (508.3 - 981.2) + (457.6 + 349.9) * (981.2 - 981.2) + (349.9 + 349.9) * (981.2 - 862.3) + (349.9 + 166.7) * (862.3 - 862.3) + (166.7 + 166.7) * (862.3 - 971.7) + (166.7 + 18.8) * (971.7 - 971.7) + (18.8 + 18.8) * (971.7 - 653.1) + (18.8 + 59) * (653.1 - 653.1) + (59 + 59) * (653.1 - 451.9) + (59 + 212.1) * (451.9 - 451.9) + (212.1 + 212.1) * (451.9 - 320.8) + (212.1 + 596.9) * (320.8 - 320.8)) * 0.5 * 0.00694$

859 Bay Esplanade, 700 Island Way, Clearwater Beach, Pinellas County, Florida, United States, 33767

Gross Living Area: 1801 sq. ft

Space	Area (sq. ft)	Calculation <small>Coordinate Polygon Area Algorithm using inches</small>
PORCH (Non-living area)	108	$-\left((349.9 + 349.9) * (862.3 - 981) + (349.9 + 272.4) * (981 - 981) + (272.4 + 272.4) * (981 - 922.8) + (272.4 + 166.7) * (922.8 - 922.8) + (166.7 + 166.7) * (922.8 - 862.3) + (166.7 + 349.9) * (862.3 - 862.3)\right) * 0.5 * 0.00694$
DECK (Non-living area)	803	$-\left((598.4 + 598.4) * (88.4 - 320.8) + (598.4 + 212.1) * (320.8 - 320.8) + (212.1 + 212.1) * (320.8 - 451.9) + (212.1 + 78.4) * (451.9 - 451.9) + (78.4 + 78.4) * (451.9 - 301.5) + (78.4 + 102) * (301.5 - 222.7) + (102 + 155.5) * (222.7 - 189.1) + (155.5 + 155.5) * (189.1 - 189) + (155.5 + 220.3) * (189 - 182.3) + (220.3 + 239.1) * (182.3 - 180.5) + (239.1 + 304.1) * (180.5 - 130.2) + (304.1 + 304.1) * (130.2 - 88.4) + (304.1 + 598.4) * (88.4 - 88.4)\right) * 0.5 * 0.00694$
FIREPLACE (Non-living area)	12	$-\left((483 + 483) * (569.9 - 639.8) + (483 + 457.6) * (639.8 - 639.8) + (457.6 + 457.6) * (639.8 - 569.9) + (457.6 + 483) * (569.9 - 569.9)\right) * 0.5 * 0.00694$