

# Home report

## 17830 Cricket Hill Drive, Germantown, Montgomery County, Maryland, United States, 20874



## Property summary

 **1** Garages       **4** Bedrooms       **3** Bathrooms       **1** Half baths

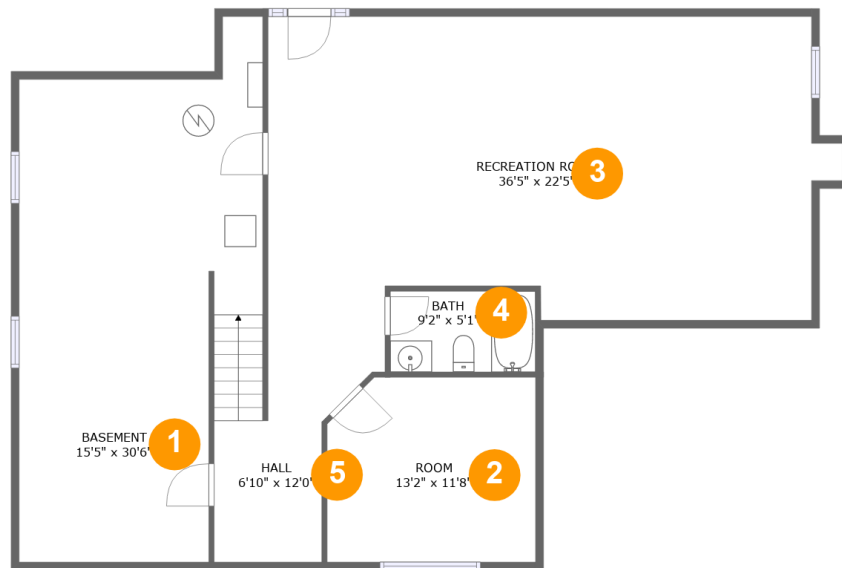
 **3** Floors

 **3,707** Gross living area sqft

 **5,119** Total sqft

Home report

17830 Cricket Hill Drive, Germantown, Montgomery County, Maryland, United States, 20874



## Room dimensions

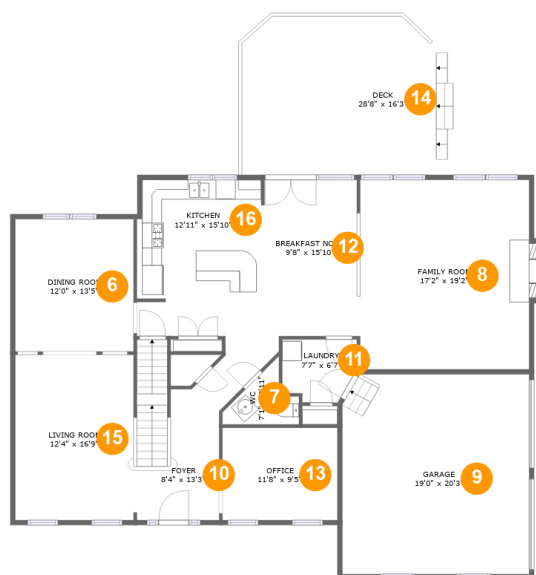
Floor 1

Total sqft: 1505 Living area: 1046

#		Dimensions	sqft	Counted as living area
1	Basement	15'5" x 30'6"	427 sq. ft	No
2	Room	13'2" x 11'8"	150 sq. ft	Yes
3	Recreation Room	36'5" x 22'5"	669 sq. ft	Yes
4	Bath	9'2" x 5'1"	47 sq. ft	Yes
5	Hall	6'10" x 12'0"	97 sq. ft	Yes

## Home report

17830 Cricket Hill Drive, Germantown, Montgomery County, Maryland, United States, 20874



## Room dimensions

Floor 2

Total sqft: 2401 Living area: 1542

#		Dimensions	sqft	Counted as living area
6	Dining Room	12'0" x 13'5"	163 sq. ft	Yes
7	WC	7'1" x 6'11"	29 sq. ft	Yes
8	Family Room	17'2" x 19'2"	337 sq. ft	Yes
9	Garage	19'0" x 20'3"	382 sq. ft	No
10	Foyer	8'4" x 13'3"	156 sq. ft	Yes
11	Laundry	7'7" x 6'7"	45 sq. ft	Yes
12	Breakfast Nook	9'8" x 15'10"	153 sq. ft	Yes
13	Office	11'8" x 9'5"	109 sq. ft	Yes
14	Deck	28'8" x 16'3"	446 sq. ft	No
15	Living Room	12'4" x 16'9"	205 sq. ft	Yes
16	Kitchen	12'11" x 15'10"	201 sq. ft	Yes

## Home report

17830 Cricket Hill Drive, Germantown, Montgomery County, Maryland, United States, 20874



## Room dimensions

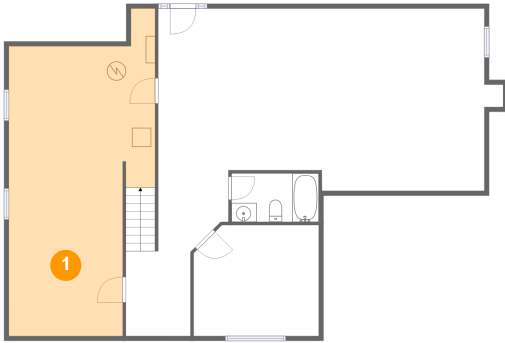
Floor 3

Total sqft: 1213 Living area: 1119

#		Dimensions	sqft	Counted as living area
17	Primary Bath	9'1" x 14'4"	105 sq. ft	Yes
18	Bedroom	12'0" x 11'8"	141 sq. ft	Yes
19	Hall	15'10" x 9'5"	119 sq. ft	Yes
20	Bedroom	9'11" x 11'6"	115 sq. ft	Yes
21	Open To Below	8'3" x 13'4"	90 sq. ft	No
22	Bedroom	10'8" x 12'5"	129 sq. ft	Yes
23	WC	2'7" x 6'1"	16 sq. ft	Yes
24	Primary Bedroom	16'0" x 17'1"	228 sq. ft	Yes
25	W.I.C.	7'11" x 7'11"	63 sq. ft	Yes
26	Bath	8'0" x 4'9"	38 sq. ft	Yes

17830 Cricket Hill Drive, Germantown, Montgomery County,  
Maryland, United States, 20874

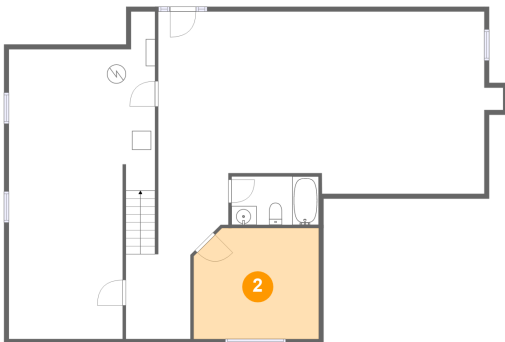
## 1 Floor 1 - Basement



Dimensions: 15'5" x 30'6"  
Area: 427 sq. ft  
Counted as living area: No

Heated: Yes  
Finished: No  
Enclosed: Yes  
Contiguous: Yes  
Permitted: Yes  
Wet space: No  
Addition: No  
Conversion: No

## 2 Floor 1 - Room

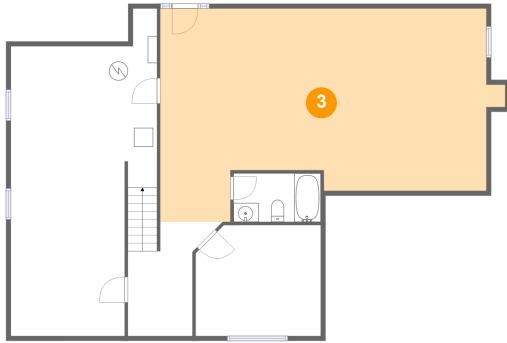


Dimensions: 13'2" x 11'8"  
Area: 150 sq. ft  
Counted as living area: Yes

Heated: Yes  
Finished: Yes  
Enclosed: Yes  
Contiguous: Yes  
Permitted: Yes  
Wet space: No  
Addition: No  
Conversion: No

17830 Cricket Hill Drive, Germantown, Montgomery County,  
Maryland, United States, 20874

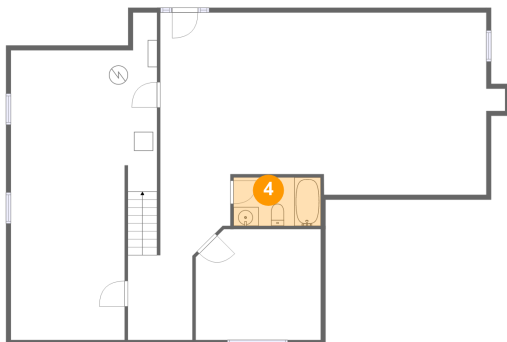
### 3 Floor 1 - Recreation Room



Dimensions: 36'5" x 22'5"  
Area: 669 sq. ft  
Counted as living area: Yes

Heated: Yes  
Finished: Yes  
Enclosed: Yes  
Contiguous: Yes  
Permitted: Yes  
Wet space: No  
Addition: No  
Conversion: No

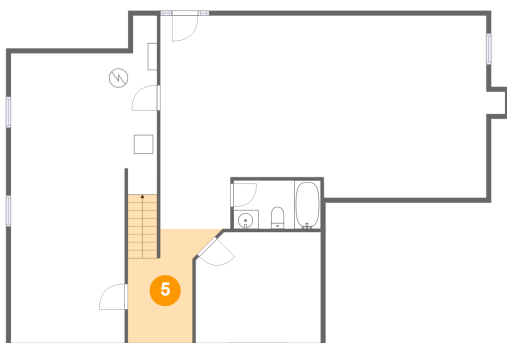
### 4 Floor 1 - Bath



Dimensions: 9'2" x 5'1"  
Area: 47 sq. ft  
Counted as living area: Yes

Heated: Yes  
Finished: Yes  
Enclosed: Yes  
Contiguous: Yes  
Permitted: Yes  
Wet space: Yes  
Addition: No  
Conversion: No

### 5 Floor 1 - Hall

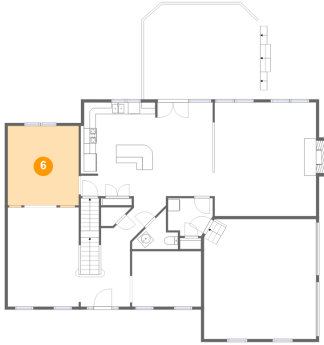


Dimensions: 6'10" x 12'0"  
Area: 97 sq. ft  
Counted as living area: Yes

Heated: Yes  
Finished: Yes  
Enclosed: Yes  
Contiguous: Yes  
Permitted: Yes  
Wet space: No  
Addition: No  
Conversion: No

17830 Cricket Hill Drive, Germantown, Montgomery County,  
Maryland, United States, 20874

## 6 Floor 2 - Dining Room



Dimensions: 12'0" x 13'5"  
Area: 163 sq. ft  
Counted as living area: Yes

Heated: Yes  
Finished: Yes  
Enclosed: Yes  
Contiguous: Yes  
Permitted: Yes  
Wet space: No  
Addition: No  
Conversion: No

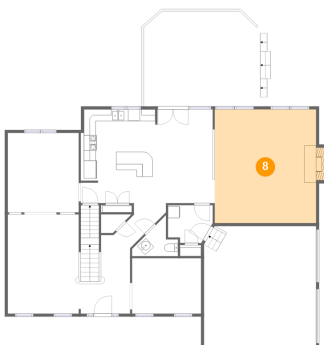
## 7 Floor 2 - WC



Dimensions: 7'1" x 6'11"  
Area: 29 sq. ft  
Counted as living area: Yes

Heated: Yes  
Finished: Yes  
Enclosed: Yes  
Contiguous: Yes  
Permitted: Yes  
Wet space: Yes  
Addition: No  
Conversion: No

## 8 Floor 2 - Family Room



Dimensions: 17'2" x 19'2"  
Area: 337 sq. ft  
Counted as living area: Yes

Heated: Yes  
Finished: Yes  
Enclosed: Yes  
Contiguous: Yes  
Permitted: Yes  
Wet space: No  
Addition: No  
Conversion: No

17830 Cricket Hill Drive, Germantown, Montgomery County,  
Maryland, United States, 20874

### 9 Floor 2 - Garage



Dimensions: 19'0" x 20'3"  
Area: 382 sq. ft  
Counted as living area: No

Heated: No  
Finished: No  
Enclosed: Yes  
Contiguous: Yes  
Permitted: Yes  
Wet space: No  
Addition: No  
Conversion: No

### 10 Floor 2 - Foyer



Dimensions: 8'4" x 13'3"  
Area: 156 sq. ft  
Counted as living area: Yes

Heated: Yes  
Finished: Yes  
Enclosed: Yes  
Contiguous: Yes  
Permitted: Yes  
Wet space: No  
Addition: No  
Conversion: No

### 11 Floor 2 - Laundry



Dimensions: 7'7" x 6'7"  
Area: 45 sq. ft  
Counted as living area: Yes

Heated: Yes  
Finished: Yes  
Enclosed: Yes  
Contiguous: Yes  
Permitted: Yes  
Wet space: No  
Addition: No  
Conversion: No



17830 Cricket Hill Drive, Germantown, Montgomery County, Maryland, United States, 20874

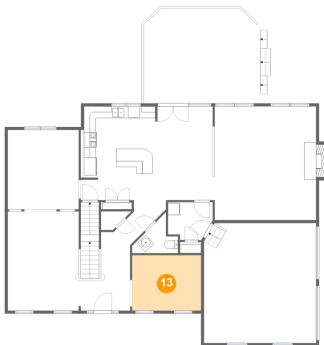
### 12 Floor 2 - Breakfast Nook



Dimensions: 9'8" x 15'10"  
Area: 153 sq. ft  
Counted as living area: Yes

Heated: Yes  
Finished: Yes  
Enclosed: Yes  
Contiguous: Yes  
Permitted: Yes  
Wet space: No  
Addition: No  
Conversion: No

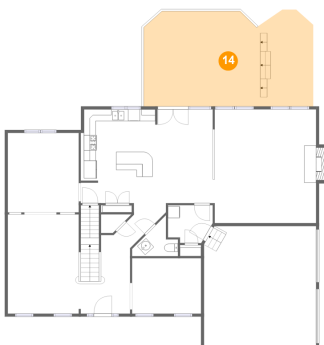
### 13 Floor 2 - Office



Dimensions: 11'8" x 9'5"  
Area: 109 sq. ft  
Counted as living area: Yes

Heated: Yes  
Finished: Yes  
Enclosed: Yes  
Contiguous: Yes  
Permitted: Yes  
Wet space: No  
Addition: No  
Conversion: No

### 14 Floor 2 - Deck

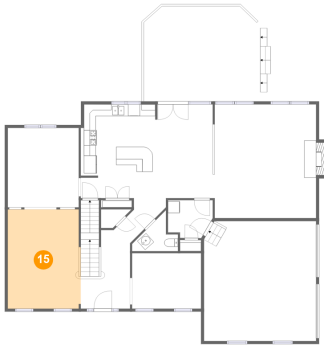


Dimensions: 28'8" x 16'3"  
Area: 446 sq. ft  
Counted as living area: No

Heated: No  
Finished: Yes  
Enclosed: No  
Contiguous: Yes  
Permitted: Yes  
Wet space: No  
Addition: No  
Conversion: No

17830 Cricket Hill Drive, Germantown, Montgomery County,  
Maryland, United States, 20874

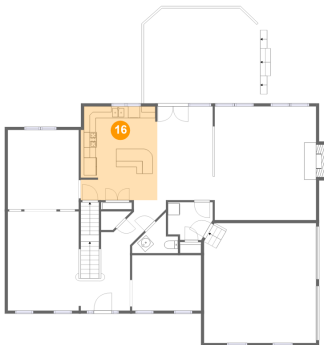
### 15 Floor 2 - Living Room



Dimensions: 12'4" x 16'9"  
Area: 205 sq. ft  
Counted as living area: Yes

Heated: Yes  
Finished: Yes  
Enclosed: Yes  
Contiguous: Yes  
Permitted: Yes  
Wet space: No  
Addition: No  
Conversion: No

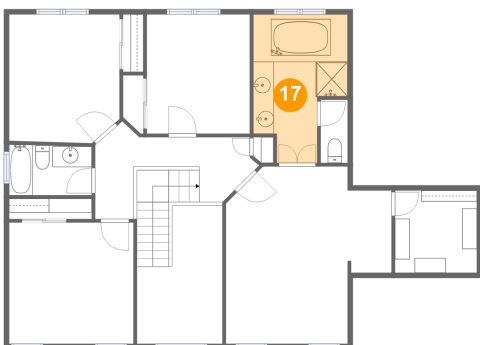
### 16 Floor 2 - Kitchen



Dimensions: 12'11" x 15'10"  
Area: 201 sq. ft  
Counted as living area: Yes

Heated: Yes  
Finished: Yes  
Enclosed: Yes  
Contiguous: Yes  
Permitted: Yes  
Wet space: No  
Addition: No  
Conversion: No

### 17 Floor 3 - Primary Bath

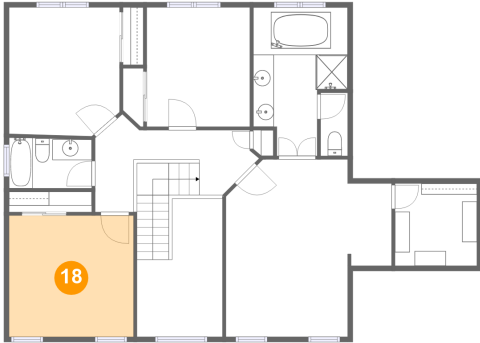


Dimensions: 9'1" x 14'4"  
Area: 105 sq. ft  
Counted as living area: Yes

Heated: Yes  
Finished: Yes  
Enclosed: Yes  
Contiguous: Yes  
Permitted: Yes  
Wet space: Yes  
Addition: No  
Conversion: No

17830 Cricket Hill Drive, Germantown, Montgomery County, Maryland, United States, 20874

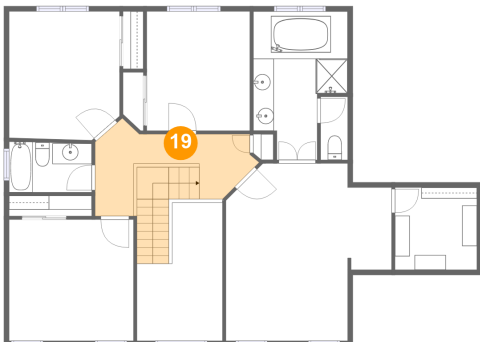
**18** Floor 3 - Bedroom



Dimensions: 12'0" x 11'8"  
Area: 141 sq. ft  
Counted as living area: Yes

Heated: Yes  
Finished: Yes  
Enclosed: Yes  
Contiguous: Yes  
Permitted: Yes  
Wet space: No  
Addition: No  
Conversion: No

**19** Floor 3 - Hall



Dimensions: 15'10" x 9'5"  
Area: 119 sq. ft  
Counted as living area: Yes

Heated: Yes  
Finished: Yes  
Enclosed: Yes  
Contiguous: Yes  
Permitted: Yes  
Wet space: No  
Addition: No  
Conversion: No

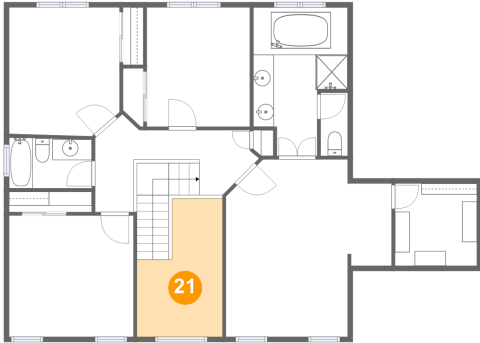
**20** Floor 3 - Bedroom



Dimensions: 9'11" x 11'6"  
Area: 115 sq. ft  
Counted as living area: Yes

Heated: Yes  
Finished: Yes  
Enclosed: Yes  
Contiguous: Yes  
Permitted: Yes  
Wet space: No  
Addition: No  
Conversion: No

**21** Floor 3 - Open To Below



Dimensions: 8'3" x 13'4"  
Area: 90 sq. ft  
Counted as living area: No

Heated: No  
Finished: No  
Enclosed: No  
Contiguous: Yes  
Permitted: No  
Wet space: No  
Addition: No  
Conversion: No

**22** Floor 3 - Bedroom



Dimensions: 10'8" x 12'5"  
Area: 129 sq. ft  
Counted as living area: Yes

Heated: Yes  
Finished: Yes  
Enclosed: Yes  
Contiguous: Yes  
Permitted: Yes  
Wet space: No  
Addition: No  
Conversion: No

**23** Floor 3 - WC

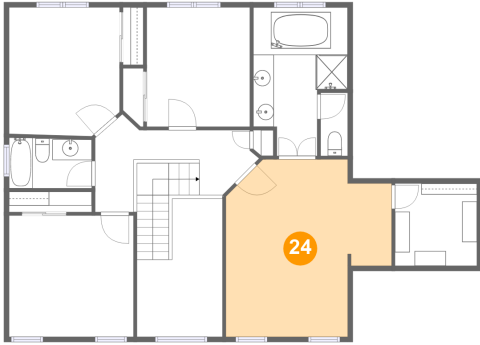


Dimensions: 2'7" x 6'1"  
Area: 16 sq. ft  
Counted as living area: Yes

Heated: Yes  
Finished: Yes  
Enclosed: Yes  
Contiguous: Yes  
Permitted: Yes  
Wet space: Yes  
Addition: No  
Conversion: No

17830 Cricket Hill Drive, Germantown, Montgomery County,  
Maryland, United States, 20874

**24** Floor 3 - Primary Bedroom



Dimensions: 16'0" x 17'1"  
Area: 228 sq. ft  
Counted as living area: Yes

Heated: Yes  
Finished: Yes  
Enclosed: Yes  
Contiguous: Yes  
Permitted: Yes  
Wet space: No  
Addition: No  
Conversion: No

**25** Floor 3 - W.I.C.



Dimensions: 7'11" x 7'11"  
Area: 63 sq. ft  
Counted as living area: Yes

Heated: Yes  
Finished: Yes  
Enclosed: Yes  
Contiguous: Yes  
Permitted: Yes  
Wet space: No  
Addition: No  
Conversion: No

**26** Floor 3 - Bath



Dimensions: 8'0" x 4'9"  
Area: 38 sq. ft  
Counted as living area: Yes

Heated: Yes  
Finished: Yes  
Enclosed: Yes  
Contiguous: Yes  
Permitted: Yes  
Wet space: Yes  
Addition: No  
Conversion: No