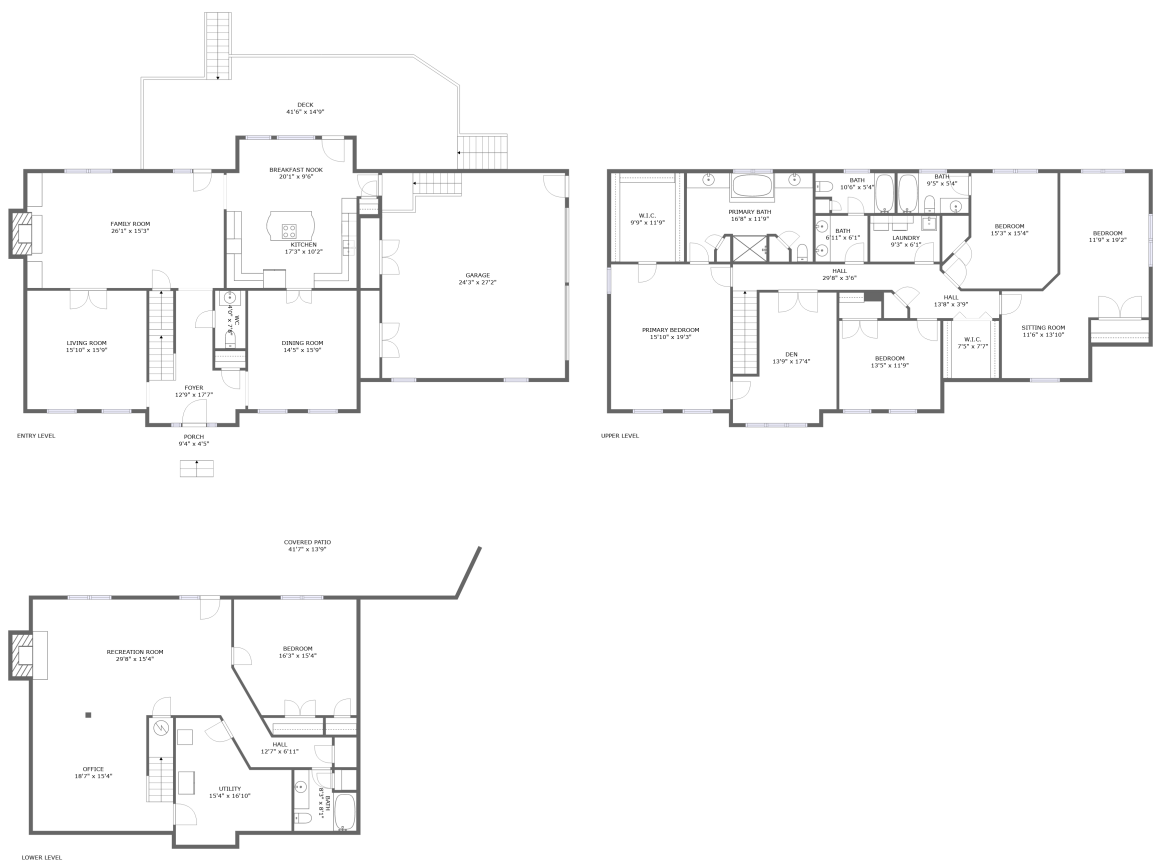


Home report

5136 Partridge Circle, Cave Spring, Roanoke, Roanoke County,  
Virginia, United States, 24018



Total Area: 4727 sq. ft

Floor 1: 1140 sq. ft, Floor 2: 1524 sq. ft, Floor 3: 2063 sq. ft

Excluded: Utility 192 sq. ft, Covered patio 536 sq. ft, Fireplace 31 sq. ft, Porch 41 sq. ft, Deck 500 sq. ft, Garage 659 sq. ft, Low ceiling 35 sq. ft, Walls: 316 sq. ft

Property summary

 **3** Floors

 **5** Bedrooms

 **4** Bathrooms

Home report

**5136 Partridge Circle, Cave Spring, Roanoke, Roanoke County,  
Virginia, United States, 24018**



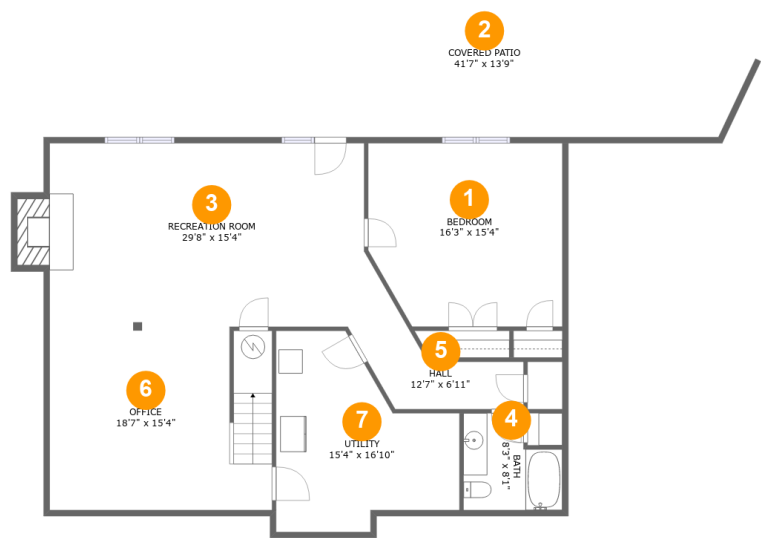
**1**  
Half baths



**1**  
Garages

Home report

5136 Partridge Circle, Cave Spring, Roanoke, Roanoke County,  
Virginia, United States, 24018



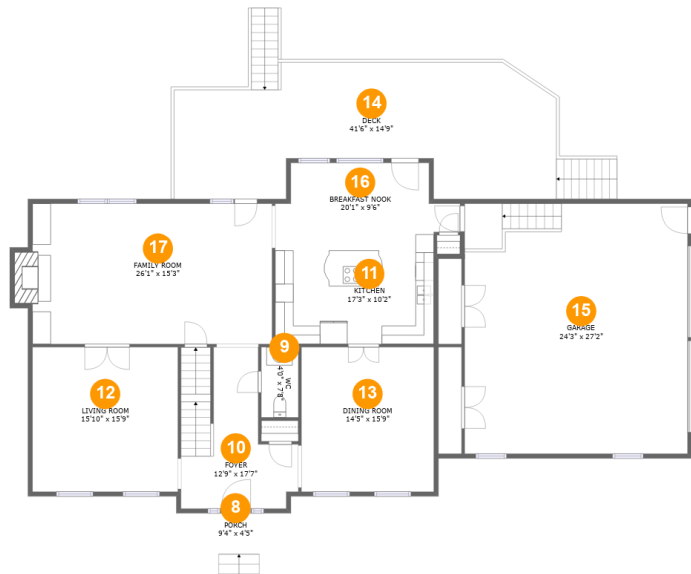
Room dimensions

Floor 1 Total:1140sqft    Excluded: 746sqft

#		Max Dimensions	sqft	Included
1	Bedroom	16'3" x 15'4"	237 sq. ft	Yes
2	Covered Patio	41'7" x 13'9"	536 sq. ft	No
3	Recreation Room	29'8" x 15'4"	430 sq. ft	Yes
4	Bath	8'3" x 8'1"	57 sq. ft	Yes
5	Hall	12'7" x 6'11"	62 sq. ft	Yes
6	Office	18'7" x 15'4"	281 sq. ft	Yes
7	Utility	15'4" x 16'10"	192 sq. ft	No

Home report

5136 Partridge Circle, Cave Spring, Roanoke, Roanoke County, Virginia, United States, 24018



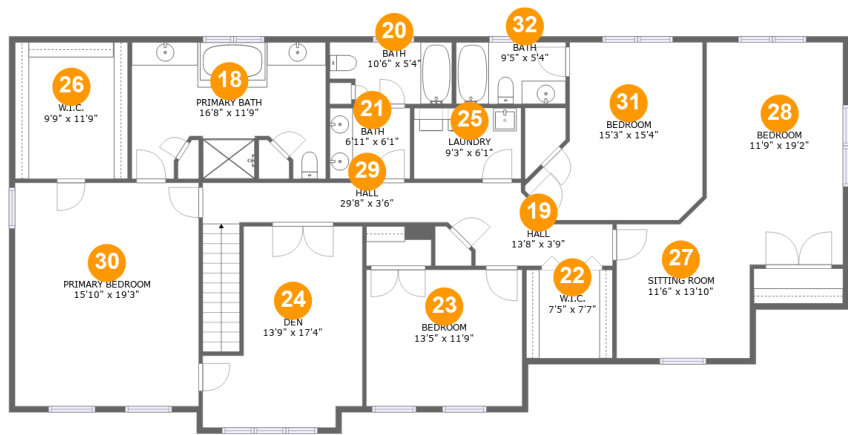
Room dimensions

Floor 2Total:1524sqft   Excluded: 1213sqft

#		Max Dimensions	sqft	Included
8	Porch	9'4" x 4'5"	41 sq. ft	No
9	WC	4'0" x 7'8"	31 sq. ft	Yes
10	Foyer	12'9" x 17'7"	173 sq. ft	Yes
11	Kitchen	17'3" x 10'2"	175 sq. ft	Yes
12	Living Room	15'10" x 15'9"	248 sq. ft	Yes
13	Dining Room	14'5" x 15'9"	226 sq. ft	Yes
14	Deck	41'6" x 14'9"	500 sq. ft	No
15	Garage	24'3" x 27'2"	659 sq. ft	No
16	Breakfast Nook	20'1" x 9'6"	163 sq. ft	Yes
17	Family Room	26'1" x 15'3"	408 sq. ft	Yes

Home report

5136 Partridge Circle, Cave Spring, Roanoke, Roanoke County,  
Virginia, United States, 24018



Room dimensions

Floor 3 Total:2063sqft    Excluded: 35sqft

#		Max Dimensions	sqft	Included
18	Primary Bath	16'8" x 11'9"	178 sq. ft	Yes
19	Hall	13'8" x 3'9"	46 sq. ft	Yes
20	Bath	10'6" x 5'4"	51 sq. ft	Yes
21	Bath	6'11" x 6'1"	42 sq. ft	Yes
22	W.I.C.	7'5" x 7'7"	21 sq. ft	Yes
23	Bedroom	13'5" x 11'9"	157 sq. ft	Yes
24	Den	13'9" x 17'4"	195 sq. ft	Yes
25	Laundry	9'3" x 6'1"	56 sq. ft	Yes
26	W.I.C.	9'9" x 11'9"	114 sq. ft	Yes
27	Sitting Room	11'6" x 13'10"	143 sq. ft	Yes
28	Bedroom	11'9" x 19'2"	203 sq. ft	Yes

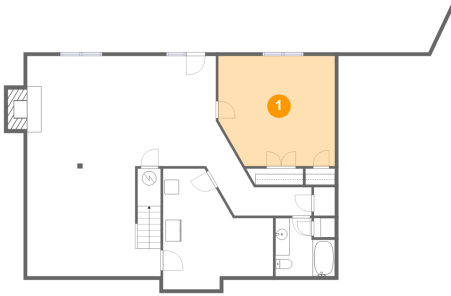
Home report

5136 Partridge Circle, Cave Spring, Roanoke, Roanoke County,  
Virginia, United States, 24018

#		Max Dimensions	sqft	Included
29	Hall	29'8" x 3'6"	132 sq. ft	Yes
30	Primary Bedroom	15'10" x 19'3"	304 sq. ft	Yes
31	Bedroom	15'3" x 15'4"	189 sq. ft	Yes
32	Bath	9'5" x 5'4"	50 sq. ft	Yes

5136 Partridge Circle, Cave Spring, Roanoke, Roanoke County,  
Virginia, United States, 24018

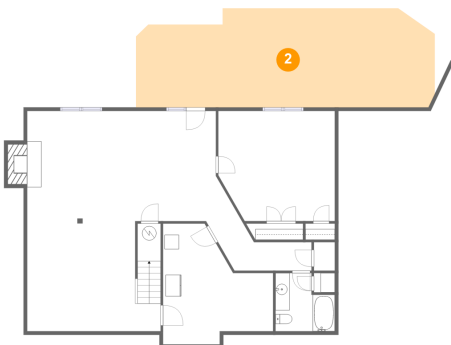
## 1 Floor 1 - Bedroom



Max Dimensions: 16'3" x  
15'4"  
Calculated Area: 237 sq. ft  
Included: Yes

Heated: Yes  
Finished: Yes  
Enclosed: Yes  
Contiguous:  
Yes  
Permitted: Yes  
Wet space: No  
Addition: No  
Conversion: No

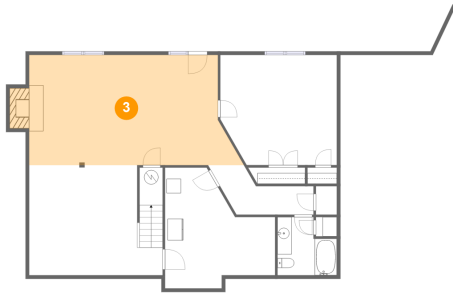
## 2 Floor 1 - Covered Patio



Max Dimensions: 41'7" x  
13'9"  
Calculated Area: 536 sq. ft  
Included: No

Heated: No  
Finished: Yes  
Enclosed: No  
Contiguous:  
Yes  
Permitted: Yes  
Wet space: No  
Addition: No  
Conversion: No

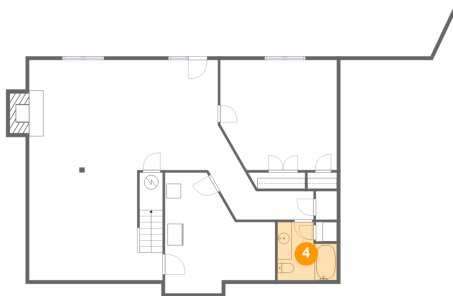
3 Floor 1 - Recreation Room



Max Dimensions: 29'8" x 15'4"  
Calculated Area: 430 sq. ft  
Included: Yes

Heated: Yes  
Finished: Yes  
Enclosed: Yes  
Contiguous: Yes  
Permitted: Yes  
Wet space: No  
Addition: No  
Conversion: No

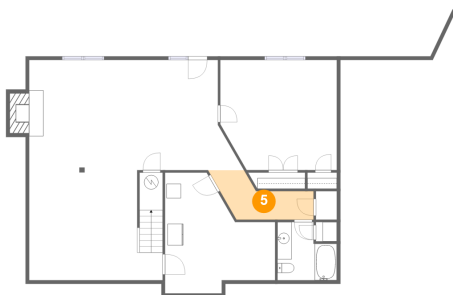
4 Floor 1 - Bath



Max Dimensions: 8'3" x 8'1"  
Calculated Area: 57 sq. ft  
Included: Yes

Heated: Yes  
Finished: Yes  
Enclosed: Yes  
Contiguous: Yes  
Permitted: Yes  
Wet space: Yes  
Addition: No  
Conversion: No

5 Floor 1 - Hall

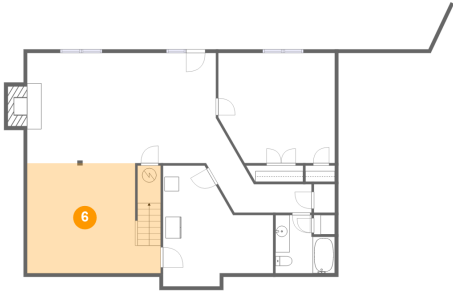


Max Dimensions: 12'7" x 6'11"  
Calculated Area: 62 sq. ft  
Included: Yes

Heated: Yes  
Finished: Yes  
Enclosed: Yes  
Contiguous: Yes  
Permitted: Yes  
Wet space: No  
Addition: No  
Conversion: No



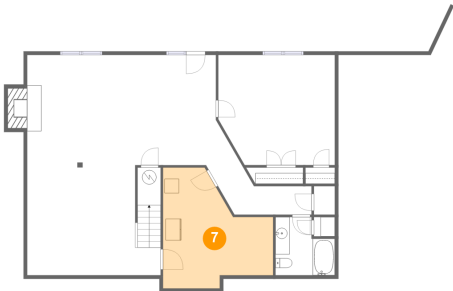
6 Floor 1 - Office



Max Dimensions: 18'7" x 15'4"  
Calculated Area: 281 sq. ft  
Included: Yes

Heated: Yes  
Finished: Yes  
Enclosed: Yes  
Contiguous: Yes  
Permitted: Yes  
Wet space: No  
Addition: No  
Conversion: No

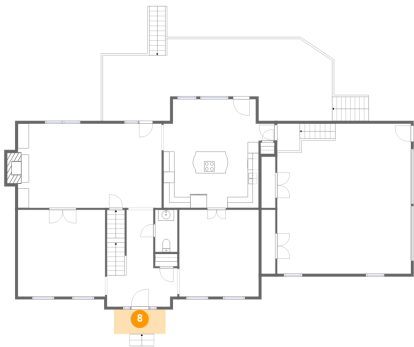
7 Floor 1 - Utility



Max Dimensions: 15'4" x 16'10"  
Calculated Area: 192 sq. ft  
Included: No

Heated: Yes  
Finished: No  
Enclosed: Yes  
Contiguous: Yes  
Permitted: Yes  
Wet space: No  
Addition: No  
Conversion: No

8 Floor 2 - Porch

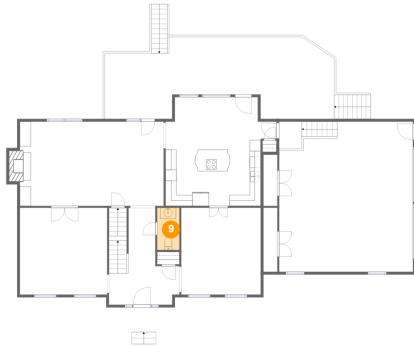


Max Dimensions: 9'4" x 4'5"  
Calculated Area: 41 sq. ft  
Included: No

Heated: No  
Finished: Yes  
Enclosed: No  
Contiguous: Yes  
Permitted: Yes  
Wet space: No  
Addition: No  
Conversion: No

5136 Partridge Circle, Cave Spring, Roanoke, Roanoke County,  
Virginia, United States, 24018

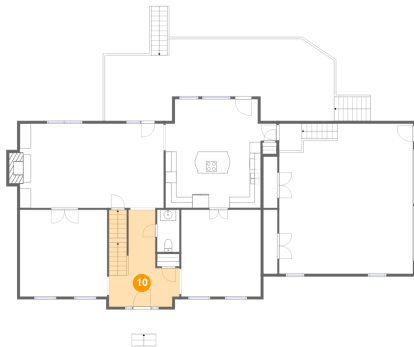
## 9 Floor 2 - WC



Max Dimensions: 4'0" x 7'8"  
Calculated Area: 31 sq. ft  
Included: Yes

Heated: Yes  
Finished: Yes  
Enclosed: Yes  
Contiguous: Yes  
Permitted: Yes  
Wet space: Yes  
Addition: No  
Conversion: No

## 10 Floor 2 - Foyer



Max Dimensions: 12'9" x 17'7"  
Calculated Area: 173 sq. ft  
Included: Yes

Heated: Yes  
Finished: Yes  
Enclosed: Yes  
Contiguous: Yes  
Permitted: Yes  
Wet space: No  
Addition: No  
Conversion: No

## 11 Floor 2 - Kitchen

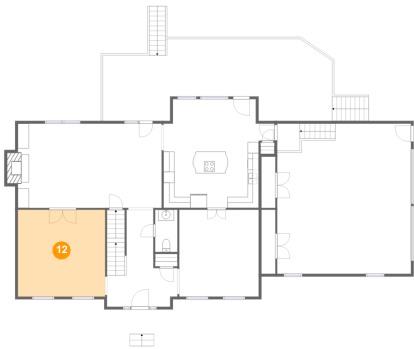


Max Dimensions: 17'3" x 10'2"  
Calculated Area: 175 sq. ft  
Included: Yes

Heated: Yes  
Finished: Yes  
Enclosed: Yes  
Contiguous: Yes  
Permitted: Yes  
Wet space: No  
Addition: No  
Conversion: No

5136 Partridge Circle, Cave Spring, Roanoke, Roanoke County,  
Virginia, United States, 24018

12 Floor 2 - Living Room



Max Dimensions: 15'10" x 15'9"  
Calculated Area: 248 sq. ft  
Included: Yes

Heated: Yes  
Finished: Yes  
Enclosed: Yes  
Contiguous: Yes  
Permitted: Yes  
Wet space: No  
Addition: No  
Conversion: No

13 Floor 2 - Dining Room



Max Dimensions: 14'5" x 15'9"  
Calculated Area: 226 sq. ft  
Included: Yes

Heated: Yes  
Finished: Yes  
Enclosed: Yes  
Contiguous: Yes  
Permitted: Yes  
Wet space: No  
Addition: No  
Conversion: No

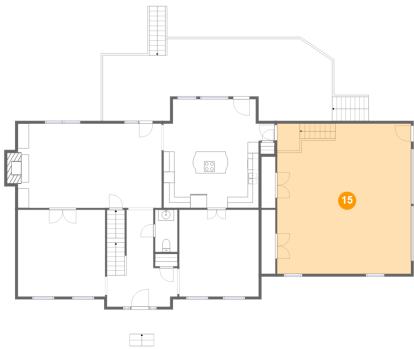
14 Floor 2 - Deck



Max Dimensions: 41'6" x 14'9"  
Calculated Area: 500 sq. ft  
Included: No

Heated: No  
Finished: Yes  
Enclosed: No  
Contiguous: Yes  
Permitted: Yes  
Wet space: No  
Addition: No  
Conversion: No

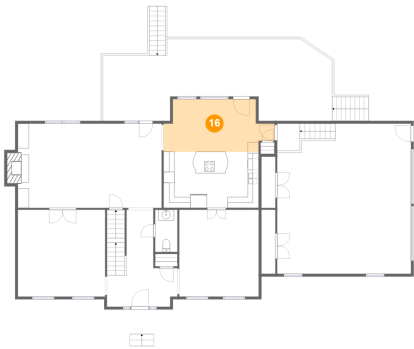
15 Floor 2 - Garage



Max Dimensions: 24'3" x 27'2"  
Calculated Area: 659 sq. ft  
Included: No

Heated: No  
Finished: No  
Enclosed: Yes  
Contiguous: Yes  
Permitted: Yes  
Wet space: No  
Addition: No  
Conversion: No

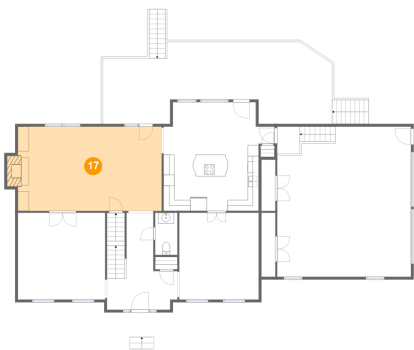
16 Floor 2 - Breakfast Nook



Max Dimensions: 20'1" x 9'6"  
Calculated Area: 163 sq. ft  
Included: Yes

Heated: Yes  
Finished: Yes  
Enclosed: Yes  
Contiguous: Yes  
Permitted: Yes  
Wet space: No  
Addition: No  
Conversion: No

17 Floor 2 - Family Room



Max Dimensions: 26'1" x 15'3"  
Calculated Area: 408 sq. ft  
Included: Yes

Heated: Yes  
Finished: Yes  
Enclosed: Yes  
Contiguous: Yes  
Permitted: Yes  
Wet space: No  
Addition: No  
Conversion: No

5136 Partridge Circle, Cave Spring, Roanoke, Roanoke County,  
Virginia, United States, 24018

### 18 Floor 3 - Primary Bath



Max Dimensions: 16'8" x 11'9"  
Calculated Area: 178 sq. ft  
Included: Yes

Heated: Yes  
Finished: Yes  
Enclosed: Yes  
Contiguous: Yes  
Permitted: Yes  
Wet space: Yes  
Addition: No  
Conversion: No

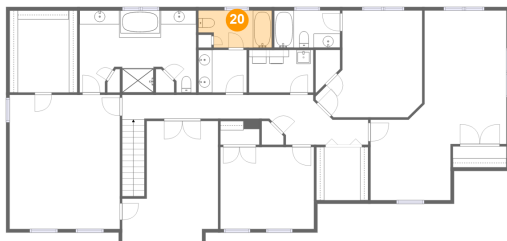
### 19 Floor 3 - Hall



Max Dimensions: 13'8" x 3'9"  
Calculated Area: 46 sq. ft  
Included: Yes

Heated: Yes  
Finished: Yes  
Enclosed: Yes  
Contiguous: Yes  
Permitted: Yes  
Wet space: No  
Addition: No  
Conversion: No

### 20 Floor 3 - Bath



Max Dimensions: 10'6" x 5'4"  
Calculated Area: 51 sq. ft  
Included: Yes

Heated: Yes  
Finished: Yes  
Enclosed: Yes  
Contiguous: Yes  
Permitted: Yes  
Wet space: Yes  
Addition: No  
Conversion: No

5136 Partridge Circle, Cave Spring, Roanoke, Roanoke County,  
Virginia, United States, 24018

### 21 Floor 3 - Bath



Max Dimensions: 6'11" x 6'1"  
Calculated Area: 42 sq. ft  
Included: Yes

Heated: Yes  
Finished: Yes  
Enclosed: Yes  
Contiguous: Yes  
Permitted: Yes  
Wet space: Yes  
Addition: No  
Conversion: No

### 22 Floor 3 - W.I.C.



Max Dimensions: 7'5" x 7'7"  
Calculated Area: 21 sq. ft  
Included: Yes

Heated: Yes  
Finished: Yes  
Enclosed: Yes  
Contiguous: Yes  
Permitted: Yes  
Wet space: No  
Addition: No  
Conversion: No

### 23 Floor 3 - Bedroom



Max Dimensions: 13'5" x 11'9"  
Calculated Area: 157 sq. ft  
Included: Yes

Heated: Yes  
Finished: Yes  
Enclosed: Yes  
Contiguous: Yes  
Permitted: Yes  
Wet space: No  
Addition: No  
Conversion: No

5136 Partridge Circle, Cave Spring, Roanoke, Roanoke County,  
Virginia, United States, 24018

24 Floor 3 - Den



Max Dimensions: 13'9" x 17'4"  
Calculated Area: 195 sq. ft  
Included: Yes

Heated: Yes  
Finished: Yes  
Enclosed: Yes  
Contiguous: Yes  
Permitted: Yes  
Wet space: No  
Addition: No  
Conversion: No

25 Floor 3 - Laundry



Max Dimensions: 9'3" x 6'1"  
Calculated Area: 56 sq. ft  
Included: Yes

Heated: Yes  
Finished: Yes  
Enclosed: Yes  
Contiguous: Yes  
Permitted: Yes  
Wet space: No  
Addition: No  
Conversion: No

26 Floor 3 - W.I.C.



Max Dimensions: 9'9" x 11'9"  
Calculated Area: 114 sq. ft  
Included: Yes

Heated: Yes  
Finished: Yes  
Enclosed: Yes  
Contiguous: Yes  
Permitted: Yes  
Wet space: No  
Addition: No  
Conversion: No

5136 Partridge Circle, Cave Spring, Roanoke, Roanoke County,  
Virginia, United States, 24018

### 27 Floor 3 - Sitting Room



Max Dimensions: 11'6" x 13'10"  
Calculated Area: 143 sq. ft  
Included: Yes

Heated: Yes  
Finished: Yes  
Enclosed: Yes  
Contiguous: Yes  
Permitted: Yes  
Wet space: No  
Addition: No  
Conversion: No

### 28 Floor 3 - Bedroom



Max Dimensions: 11'9" x 19'2"  
Calculated Area: 203 sq. ft  
Included: Yes

Heated: Yes  
Finished: Yes  
Enclosed: Yes  
Contiguous: Yes  
Permitted: Yes  
Wet space: No  
Addition: No  
Conversion: No

### 29 Floor 3 - Hall



Max Dimensions: 29'8" x 3'6"  
Calculated Area: 132 sq. ft  
Included: Yes

Heated: Yes  
Finished: Yes  
Enclosed: Yes  
Contiguous: Yes  
Permitted: Yes  
Wet space: No  
Addition: No  
Conversion: No



5136 Partridge Circle, Cave Spring, Roanoke, Roanoke County,  
Virginia, United States, 24018

### 30 Floor 3 - Primary Bedroom



Max Dimensions: 15'10" x 19'3"  
Calculated Area: 304 sq. ft  
Included: Yes

Heated: Yes  
Finished: Yes  
Enclosed: Yes  
Contiguous: Yes  
Permitted: Yes  
Wet space: No  
Addition: No  
Conversion: No

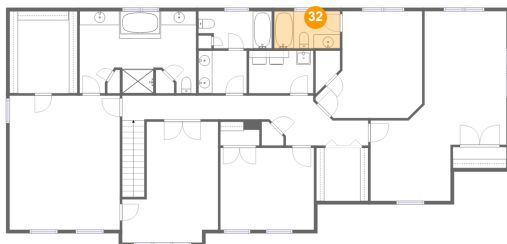
### 31 Floor 3 - Bedroom



Max Dimensions: 15'3" x 15'4"  
Calculated Area: 189 sq. ft  
Included: Yes

Heated: Yes  
Finished: Yes  
Enclosed: Yes  
Contiguous: Yes  
Permitted: Yes  
Wet space: No  
Addition: No  
Conversion: No

### 32 Floor 3 - Bath



Max Dimensions: 9'5" x 5'4"  
Calculated Area: 50 sq. ft  
Included: Yes

Heated: Yes  
Finished: Yes  
Enclosed: Yes  
Contiguous: Yes  
Permitted: Yes  
Wet space: Yes  
Addition: No  
Conversion: No