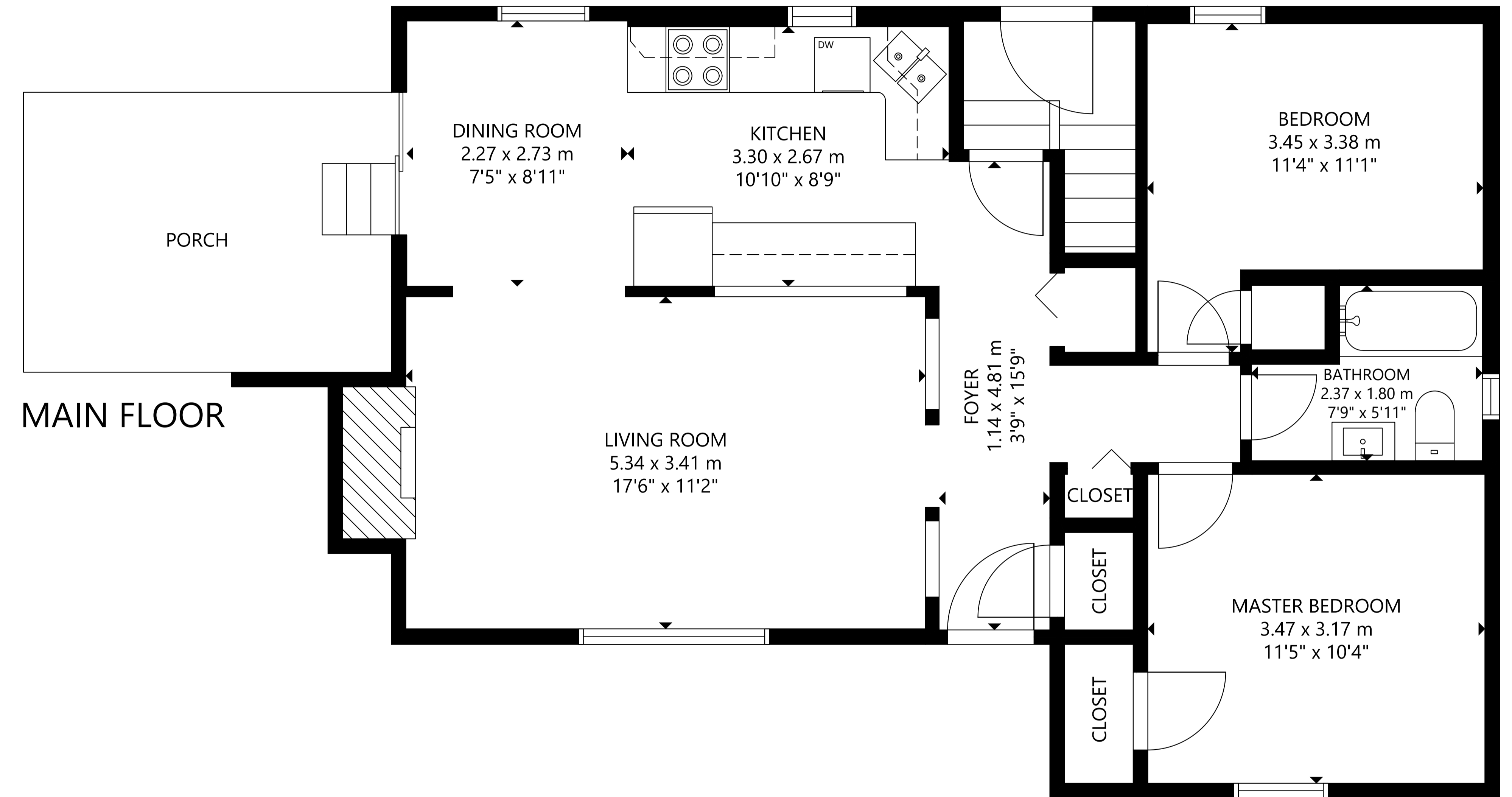
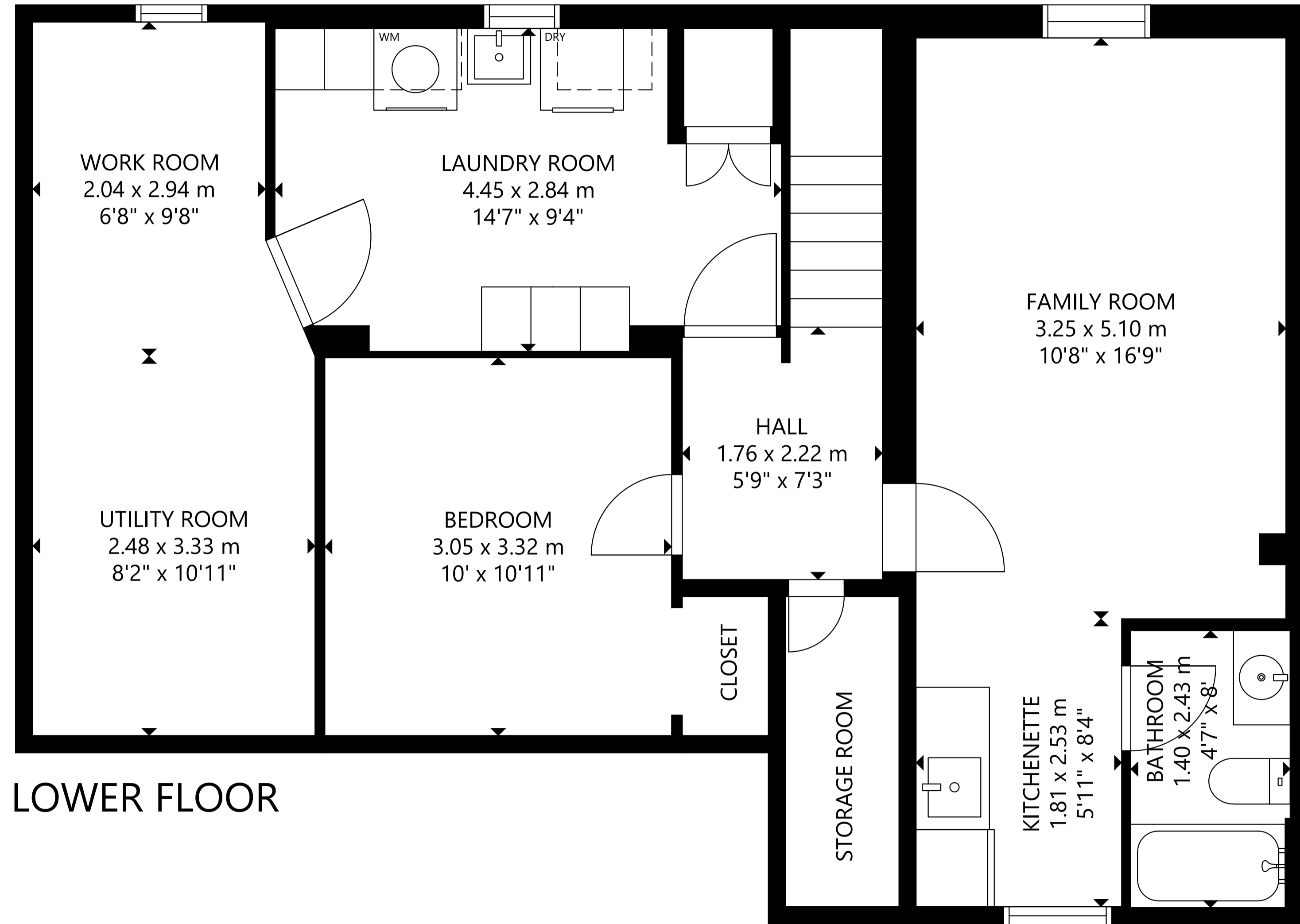


169 Cornell Avenue, Toronto, Ontario, M1N 2Y5



GROSS INTERNAL AREA
MAIN FLOOR : 826 sq ft/ 77 m², LOWER FLOOR : 806 sq ft/ 75 m²
TOTAL : 1,632 sq ft/ 152 m²
SIZE AND DIMENSIONS ARE APPROXIMATE, ACTUAL MAY VARY.