


303 Goodwin Avenue, Westfield, Salem, Salem city, Virginia, United States, 24153



Property summary


 **0** Garages

 **3** Bedrooms

 **1** Bathrooms

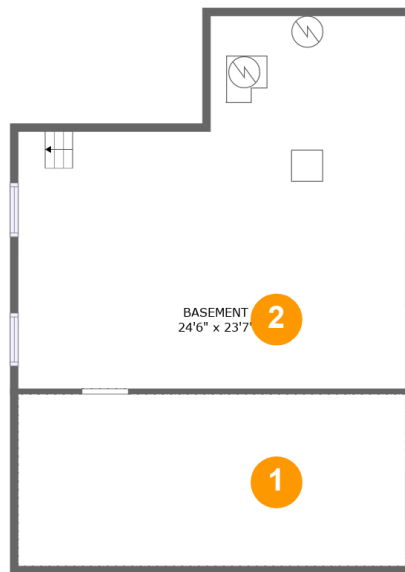
 **0** Half baths

 **3** Floors

 **1,267** Gross living area sqft

 **2,393** Total sqft

**303 Goodwin Avenue, Westfield, Salem, Salem city,
Virginia, United States, 24153**



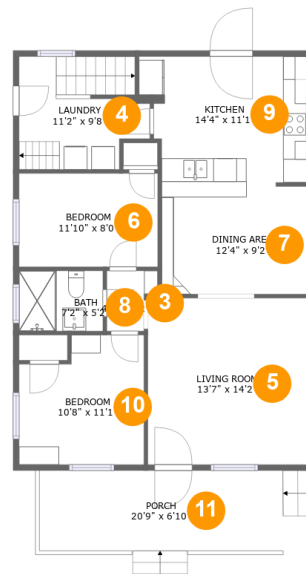
Room dimensions

Floor 1

Total sqft: 826 Living area: 0

#		Dimensions	sqft	Counted as living area
1	Crawl Space	24'6" x 10'11"	268 sq. ft	No
2	Basement	24'6" x 23'7"	490 sq. ft	No

**303 Goodwin Avenue, Westfield, Salem, Salem city,
Virginia, United States, 24153**



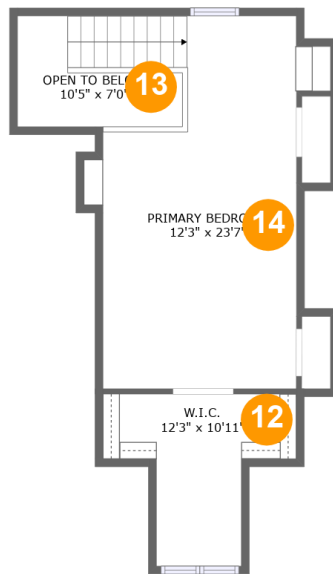
Room dimensions

Floor 2

Total sqft: 1057 Living area: 915

#		Dimensions	sqft	Counted as living area
3	Hall	4'4" x 5'2"	19 sq. ft	Yes
4	Laundry	11'2" x 9'8"	94 sq. ft	Yes
5	Living Room	13'7" x 14'2"	192 sq. ft	Yes
6	Bedroom	11'10" x 8'0"	94 sq. ft	Yes
7	Dining Area	12'4" x 9'2"	114 sq. ft	Yes
8	Bath	7'2" x 5'2"	37 sq. ft	Yes
9	Kitchen	14'4" x 11'1"	144 sq. ft	Yes
10	Bedroom	10'8" x 11'1"	107 sq. ft	Yes
11	Porch	20'9" x 6'10"	142 sq. ft	No

303 Goodwin Avenue, Westfield, Salem, Salem city,
Virginia, United States, 24153



Room dimensions

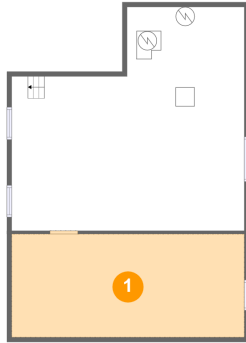
Floor 3

Total sqft: 510 Living area: 352

#		Dimensions	sqft	Counted as living area
12	W.I.C.	12'3" x 10'11"	80 sq. ft	Yes
13	Open To Below	10'5" x 7'0"	47 sq. ft	No
14	Primary Bedroom	12'3" x 23'7"	247 sq. ft	Yes

**303 Goodwin Avenue, Westfield, Salem, Salem city,
Virginia, United States, 24153**

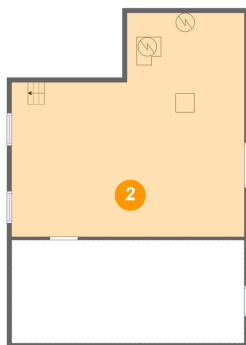
1 Floor 1 - Crawl Space



Dimensions: 24'6" x 10'11"
Area: 268 sq. ft
Counted as living area: No

Heated: No
Finished: No
Enclosed: No
Contiguous: Yes
Permitted: No
Wet space: No
Addition: No
Conversion: No

2 Floor 1 - Basement



Dimensions: 24'6" x 23'7"
Area: 490 sq. ft
Counted as living area: No

Heated: Yes
Finished: No
Enclosed: Yes
Contiguous: Yes
Permitted: Yes
Wet space: No
Addition: No
Conversion: No

303 Goodwin Avenue, Westfield, Salem, Salem city,
Virginia, United States, 24153

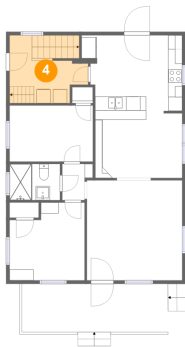
3 Floor 2 - Hall



Dimensions: 4'4" x 5'2"
Area: 19 sq. ft
Counted as living area: Yes

Heated: Yes
Finished: Yes
Enclosed: Yes
Contiguous: Yes
Permitted: Yes
Wet space: No
Addition: No
Conversion: No

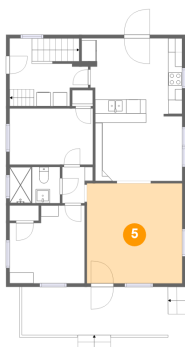
4 Floor 2 - Laundry



Dimensions: 11'2" x 9'8"
Area: 94 sq. ft
Counted as living area: Yes

Heated: Yes
Finished: Yes
Enclosed: Yes
Contiguous: Yes
Permitted: Yes
Wet space: No
Addition: No
Conversion: No

5 Floor 2 - Living Room

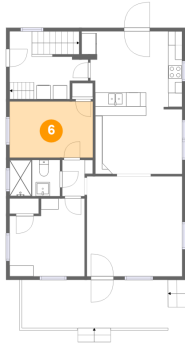


Dimensions: 13'7" x 14'2"
Area: 192 sq. ft
Counted as living area: Yes

Heated: Yes
Finished: Yes
Enclosed: Yes
Contiguous: Yes
Permitted: Yes
Wet space: No
Addition: No
Conversion: No

303 Goodwin Avenue, Westfield, Salem, Salem city,
Virginia, United States, 24153

6 Floor 2 - Bedroom



Dimensions: 11'10" x 8'0"
Area: 94 sq. ft
Counted as living area: Yes

Heated: Yes
Finished: Yes
Enclosed: Yes
Contiguous: Yes
Permitted: Yes
Wet space: No
Addition: No
Conversion: No

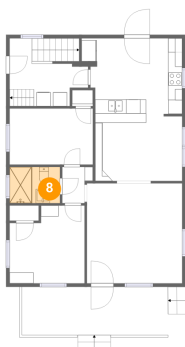
7 Floor 2 - Dining Area



Dimensions: 12'4" x 9'2"
Area: 114 sq. ft
Counted as living area: Yes

Heated: Yes
Finished: Yes
Enclosed: Yes
Contiguous: Yes
Permitted: Yes
Wet space: No
Addition: No
Conversion: No

8 Floor 2 - Bath



Dimensions: 7'2" x 5'2"
Area: 37 sq. ft
Counted as living area: Yes

Heated: Yes
Finished: Yes
Enclosed: Yes
Contiguous: Yes
Permitted: Yes
Wet space: Yes
Addition: No
Conversion: No

**303 Goodwin Avenue, Westfield, Salem, Salem city,
Virginia, United States, 24153**

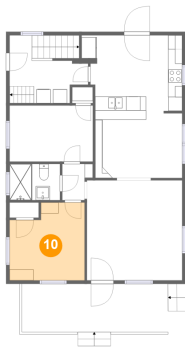
9 Floor 2 - Kitchen



Dimensions: 14'4" x 11'1"
Area: 144 sq. ft
Counted as living area: Yes

Heated: Yes
Finished: Yes
Enclosed: Yes
Contiguous: Yes
Permitted: Yes
Wet space: No
Addition: No
Conversion: No

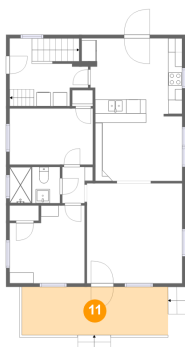
10 Floor 2 - Bedroom



Dimensions: 10'8" x 11'1"
Area: 107 sq. ft
Counted as living area: Yes

Heated: Yes
Finished: Yes
Enclosed: Yes
Contiguous: Yes
Permitted: Yes
Wet space: No
Addition: No
Conversion: No

11 Floor 2 - Porch



Dimensions: 20'9" x 6'10"
Area: 142 sq. ft
Counted as living area: No

Heated: No
Finished: Yes
Enclosed: No
Contiguous: Yes
Permitted: Yes
Wet space: No
Addition: No
Conversion: No

303 Goodwin Avenue, Westfield, Salem, Salem city,
Virginia, United States, 24153

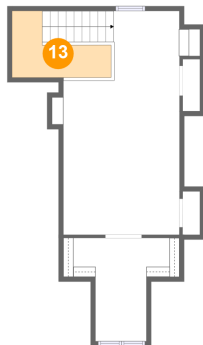
12 Floor 3 - W.I.C.



Dimensions: 12'3" x 10'11"
Area: 80 sq. ft
Counted as living area: Yes

Heated: Yes
Finished: Yes
Enclosed: Yes
Contiguous: Yes
Permitted: Yes
Wet space: No
Addition: No
Conversion: No

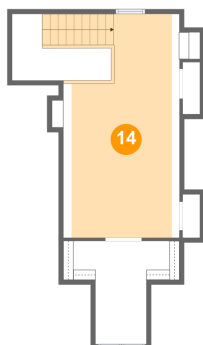
13 Floor 3 - Open To Below



Dimensions: 10'5" x 7'0"
Area: 47 sq. ft
Counted as living area: No

Heated: No
Finished: No
Enclosed: No
Contiguous: Yes
Permitted: No
Wet space: No
Addition: No
Conversion: No

14 Floor 3 - Primary Bedroom



Dimensions: 12'3" x 23'7"
Area: 247 sq. ft
Counted as living area: Yes

Heated: Yes
Finished: Yes
Enclosed: Yes
Contiguous: Yes
Permitted: Yes
Wet space: No
Addition: No
Conversion: No