

Home Data Report

105 Jefferson Run Road, Great Falls, Fairfax County, Virginia, United States, 22066



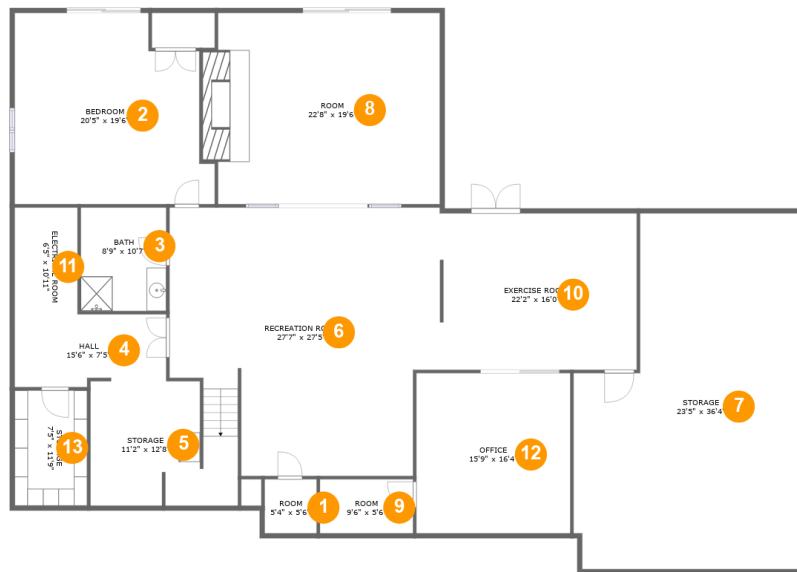
Property Summary

1 garages **5** bedrooms **4** bathrooms **2** half baths

4 floors **6,869** Gross Living Area sqft **9,376** total sqft

Home Data Report

105 Jefferson Run Road, Great Falls, Fairfax County, Virginia, United States, 22066



Room Dimensions

Floor 1

Total sqft: 3663

Living area: 2560

#	Room name	Dimensions	Area (sqft)	Counted as Living Area
1	Room	5'4" x 5'6"	29 sq. ft	Yes
2	Bedroom	20'5" x 19'6"	354 sq. ft	Yes
3	Bath	8'9" x 10'7"	92 sq. ft	Yes
4	Hall	15'6" x 7'5"	109 sq. ft	Yes
5	Storage	11'2" x 12'8"	142 sq. ft	No
6	Recreation Room	27'7" x 27'5"	689 sq. ft	Yes
7	Storage	23'5" x 36'4"	737 sq. ft	No
8	Room	22'8" x 19'6"	459 sq. ft	Yes
9	Room	9'6" x 5'6"	52 sq. ft	Yes
10	Exercise Room	22'2" x 16'0"	329 sq. ft	Yes
11	Electrical Room	6'5" x 10'11"	70 sq. ft	No

Scan captured on Sun, 15 Sep 2024 19:22:17 GMT

Information is calculated by CubiCasa technology; deemed highly reliable but not guaranteed.

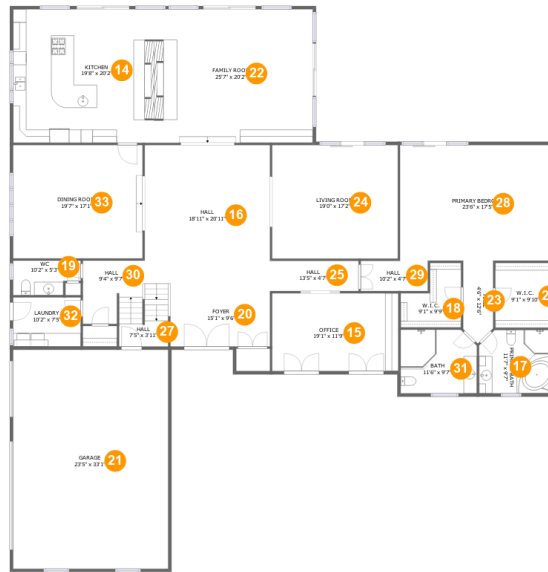
Home Data Report

**105 Jefferson Run Road, Great Falls, Fairfax
County, Virginia, United States, 22066**

#	Room name	Dimensions	Area (sqft)	Counted as Living Area
12	Office	15'9" x 16'4"	257 sq. ft	Yes
13	Storage	7'5" x 11'9"	87 sq. ft	No

Home Data Report

105 Jefferson Run Road, Great Falls, Fairfax County, Virginia, United States, 22066



Room Dimensions

Floor 2

Total sqft: 4640

Living area: 3651

#	Room name	Dimensions	Area (sqft)	Counted as Living Area
14	Kitchen	19'8" x 20'2"	397 sq. ft	Yes
15	Office	19'1" x 11'9"	224 sq. ft	Yes
16	Hall	18'11" x 20'11"	396 sq. ft	Yes
17	Primary Bath	11'7" x 9'7"	108 sq. ft	Yes
18	W.i.c.	9'1" x 9'9"	69 sq. ft	Yes
19	Wc	10'2" x 5'3"	47 sq. ft	Yes
20	Foyer	15'1" x 9'6"	165 sq. ft	No
21	Garage	23'5" x 33'1"	775 sq. ft	No
22	Family Room	25'7" x 20'2"	516 sq. ft	Yes
23	Hall	4'6" x 12'6"	52 sq. ft	Yes
24	Living Room	19'0" x 17'2"	326 sq. ft	Yes

Scan captured on Sun, 15 Sep 2024 19:22:17 GMT

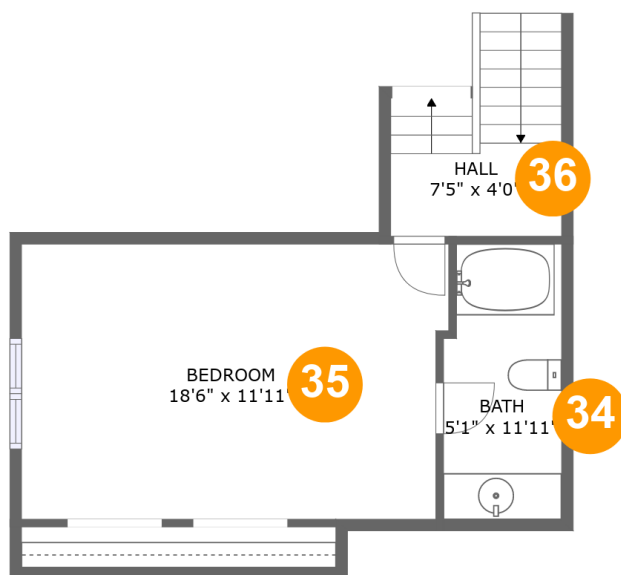
Information is calculated by CubiCasa technology; deemed highly reliable but not guaranteed.

Home Data Report

**105 Jefferson Run Road, Great Falls, Fairfax
County, Virginia, United States, 22066**

#	Room name	Dimensions	Area (sqft)	Counted as Living Area
25	Hall	13'5" x 4'7"	61 sq. ft	Yes
26	W.i.c.	9'1" x 9'10"	89 sq. ft	Yes
27	Hall	7'5" x 3'11"	29 sq. ft	Yes
28	Primary Bedroom	23'6" x 17'5"	410 sq. ft	Yes
29	Hall	10'2" x 4'7"	46 sq. ft	Yes
30	Hall	9'4" x 9'7"	86 sq. ft	Yes
31	Bath	11'6" x 9'7"	108 sq. ft	Yes
32	Laundry	10'2" x 7'5"	76 sq. ft	Yes
33	Dining Room	19'7" x 17'1"	335 sq. ft	Yes

105 Jefferson Run Road, Great Falls, Fairfax County, Virginia, United States, 22066



Room Dimensions

Floor 3

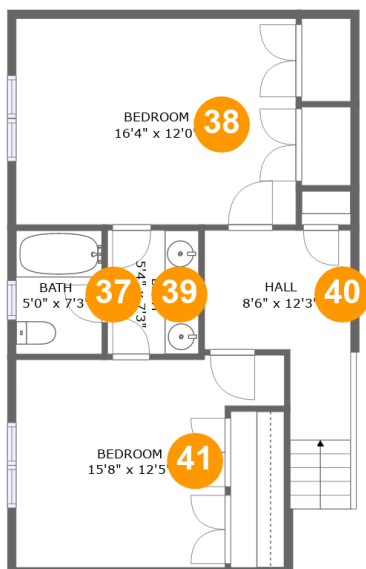
Total sqft: 411

Living area: 378

#	Room name	Dimensions	Area (sqft)	Counted as Living Area
34	Bath	5'1" x 11'11"	59 sq. ft	Yes
35	Bedroom	18'6" x 11'11"	216 sq. ft	Yes
36	Hall	7'5" x 4'0"	57 sq. ft	Yes

Home Data Report

105 Jefferson Run Road, Great Falls, Fairfax County, Virginia, United States, 22066



Room Dimensions

Floor 4

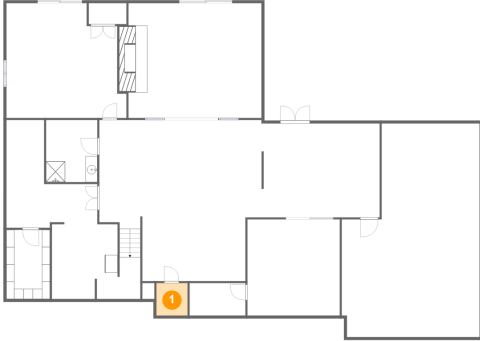
Total sqft: 662

Living area: 280

#	Room name	Dimensions	Area (sqft)	Counted as Living Area
37	Bath	5'0" x 7'3"	36 sq. ft	Yes
38	Bedroom	16'4" x 12'0"	197 sq. ft	No
39	Bath	5'4" x 7'3"	39 sq. ft	Yes
40	Hall	8'6" x 12'3"	95 sq. ft	Yes
41	Bedroom	15'8" x 12'5"	159 sq. ft	No

**105 Jefferson Run Road, Great Falls, Fairfax
County, Virginia, United States, 22066**

1 Floor 1 - Room



Dimensions: 5'4" x 5'6"
Area: 29 sq. ft
Counted as Living Area:
Yes

Heated: Yes
Finished: Yes
Enclosed: Yes
Contiguous:
Yes
Permitted: Yes
Wet Space: No
Addition: No
Conversion: No

2 Floor 1 - Bedroom

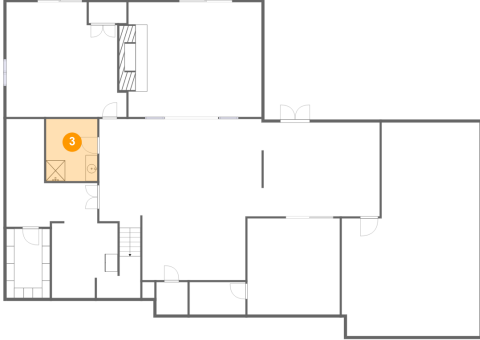


Dimensions: 20'5" x 19'6"
Area: 354 sq. ft
Counted as Living Area:
Yes

Heated: Yes
Finished: Yes
Enclosed: Yes
Contiguous:
Yes
Permitted: Yes
Wet Space: No
Addition: No
Conversion: No

**105 Jefferson Run Road, Great Falls, Fairfax
County, Virginia, United States, 22066**

3 Floor 1 - Bath



Dimensions: 8'9" x 10'7"
Area: 92 sq. ft
Counted as Living Area:
Yes

Heated: Yes
Finished: Yes
Enclosed: Yes
Contiguous:
Yes
Permitted: Yes
Wet Space: Yes
Addition: No
Conversion: No

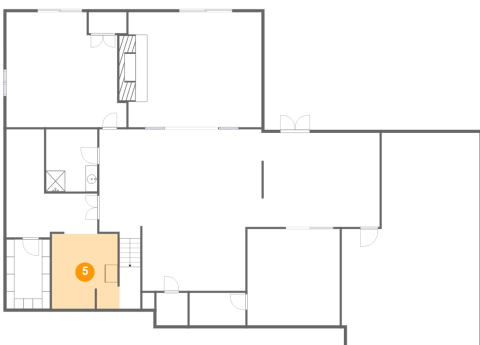
4 Floor 1 - Hall



Dimensions: 15'6" x 7'5"
Area: 109 sq. ft
Counted as Living Area:
Yes

Heated: Yes
Finished: Yes
Enclosed: Yes
Contiguous:
Yes
Permitted: Yes
Wet Space: No
Addition: No
Conversion: No

5 Floor 1 - Storage

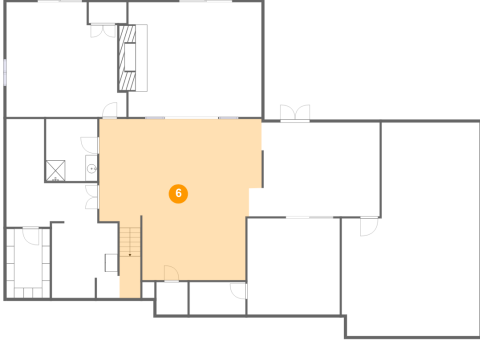


Dimensions: 11'2" x 12'8"
Area: 142 sq. ft
Counted as Living Area: No

Heated: No
Finished: No
Enclosed: No
Contiguous: Yes
Permitted: Yes
Wet Space: No
Addition: No
Conversion: No

105 Jefferson Run Road, Great Falls, Fairfax County, Virginia, United States, 22066

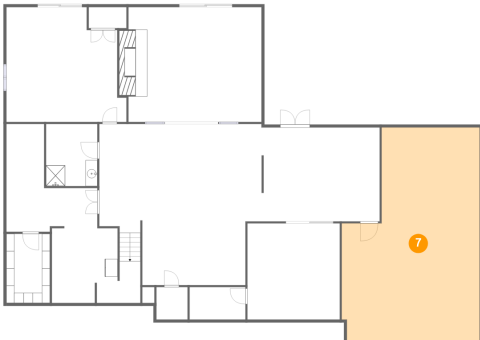
6 Floor 1 - Recreation Room



Dimensions: 27'7" x 27'5"
Area: 689 sq. ft
Counted as Living Area:
Yes

Heated: Yes
Finished: Yes
Enclosed: Yes
Contiguous:
Yes
Permitted: Yes
Wet Space: No
Addition: No
Conversion: No

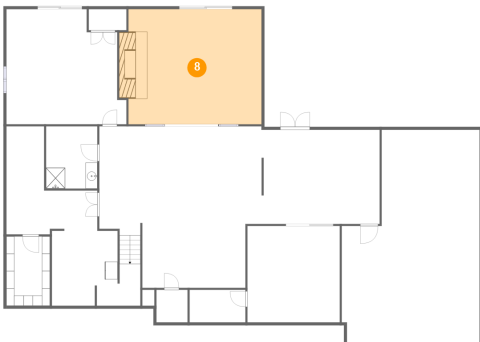
7 Floor 1 - Storage



Dimensions: 23'5" x 36'4"
Area: 737 sq. ft
Counted as Living Area: No

Heated: No
Finished: No
Enclosed: No
Contiguous: Yes
Permitted: Yes
Wet Space: No
Addition: No
Conversion: No

8 Floor 1 - Room

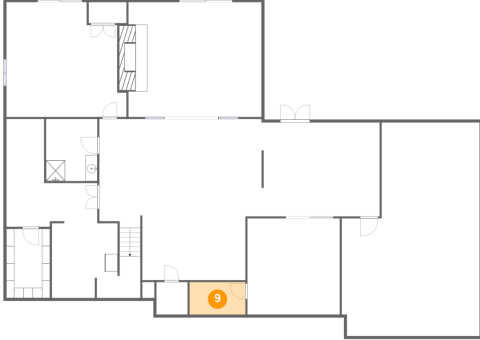


Dimensions: 22'8" x 19'6"
Area: 459 sq. ft
Counted as Living Area:
Yes

Heated: Yes
Finished: Yes
Enclosed: Yes
Contiguous:
Yes
Permitted: Yes
Wet Space: No
Addition: No
Conversion: No

105 Jefferson Run Road, Great Falls, Fairfax County, Virginia, United States, 22066

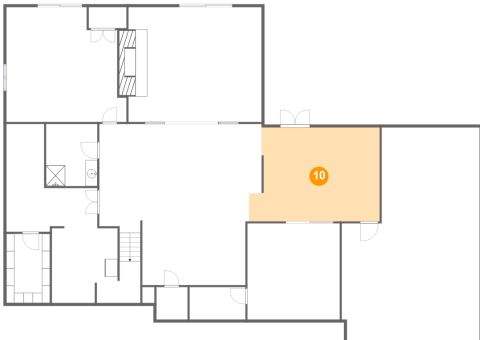
9 Floor 1 - Room



Dimensions: 9'6" x 5'6"
Area: 52 sq. ft
Counted as Living Area:
Yes

Heated: Yes
Finished: Yes
Enclosed: Yes
Contiguous:
Yes
Permitted: Yes
Wet Space: No
Addition: No
Conversion: No

10 Floor 1 - Exercise Room



Dimensions: 22'2" x 16'0"
Area: 329 sq. ft
Counted as Living Area:
Yes

Heated: Yes
Finished: Yes
Enclosed: Yes
Contiguous:
Yes
Permitted: Yes
Wet Space: No
Addition: No
Conversion: No

11 Floor 1 - Electrical Room

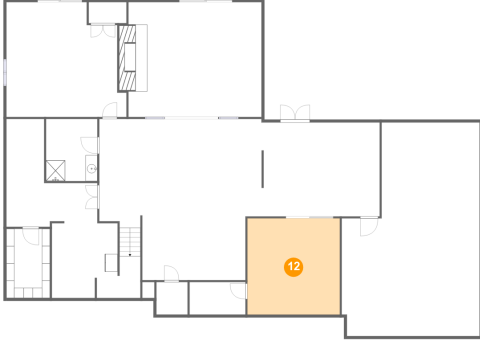


Dimensions: 6'5" x 10'11"
Area: 70 sq. ft
Counted as Living Area: No

Heated: No
Finished: No
Enclosed: Yes
Contiguous: Yes
Permitted: Yes
Wet Space: No
Addition: No
Conversion: No

**105 Jefferson Run Road, Great Falls, Fairfax
County, Virginia, United States, 22066**

12 Floor 1 - Office



Dimensions: 15'9" x 16'4"
Area: 257 sq. ft
Counted as Living Area:
Yes

Heated: Yes
Finished: Yes
Enclosed: Yes
Contiguous:
Yes
Permitted: Yes
Wet Space: No
Addition: No
Conversion: No

13 Floor 1 - Storage



Dimensions: 7'5" x 11'9"
Area: 87 sq. ft
Counted as Living Area: No

Heated: No
Finished: No
Enclosed: No
Contiguous: Yes
Permitted: Yes
Wet Space: No
Addition: No
Conversion: No

14 Floor 2 - Kitchen

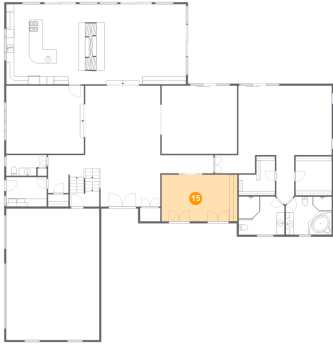


Dimensions: 19'8" x 20'2"
Area: 397 sq. ft
Counted as Living Area:
Yes

Heated: Yes
Finished: Yes
Enclosed: Yes
Contiguous:
Yes
Permitted: Yes
Wet Space: No
Addition: No
Conversion: No

**105 Jefferson Run Road, Great Falls, Fairfax
County, Virginia, United States, 22066**

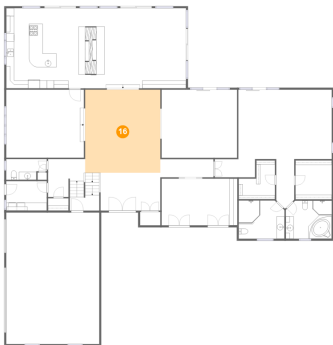
15 Floor 2 - Office



Dimensions: 19'1" x 11'9"
Area: 224 sq. ft
Counted as Living Area:
Yes

Heated: Yes
Finished: Yes
Enclosed: Yes
Contiguous:
Yes
Permitted: Yes
Wet Space: No
Addition: No
Conversion: No

16 Floor 2 - Hall



Dimensions: 18'11" x 20'11"
Area: 396 sq. ft
Counted as Living Area:
Yes

Heated: Yes
Finished: Yes
Enclosed: Yes
Contiguous:
Yes
Permitted: Yes
Wet Space: No
Addition: No
Conversion: No

17 Floor 2 - Primary Bath

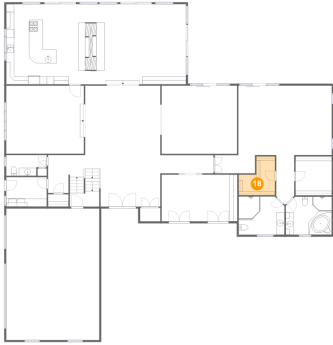


Dimensions: 11'7" x 9'7"
Area: 108 sq. ft
Counted as Living Area:
Yes

Heated: Yes
Finished: Yes
Enclosed: Yes
Contiguous:
Yes
Permitted: Yes
Wet Space: Yes
Addition: No
Conversion: No

**105 Jefferson Run Road, Great Falls, Fairfax
County, Virginia, United States, 22066**

18 Floor 2 - W.i.c.



Dimensions: 9'1" x 9'9"
Area: 69 sq. ft
Counted as Living Area:
Yes

Heated: Yes
Finished: Yes
Enclosed: Yes
Contiguous:
Yes
Permitted: Yes
Wet Space: No
Addition: No
Conversion: No

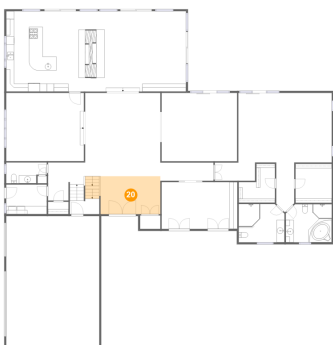
19 Floor 2 - Wc



Dimensions: 10'2" x 5'3"
Area: 47 sq. ft
Counted as Living Area:
Yes

Heated: Yes
Finished: Yes
Enclosed: Yes
Contiguous:
Yes
Permitted: Yes
Wet Space: Yes
Addition: No
Conversion: No

20 Floor 2 - Foyer



Dimensions: 15'1" x 9'6"
Area: 165 sq. ft
Counted as Living Area: No

Heated: Yes
Finished: Yes
Enclosed: Yes
Contiguous: Yes
Permitted: Yes
Wet Space: No
Addition: No
Conversion: No

105 Jefferson Run Road, Great Falls, Fairfax County, Virginia, United States, 22066

21 Floor 2 - Garage



Dimensions: 23'5" x 33'1"
Area: 775 sq. ft
Counted as Living Area: No

Heated: No
Finished: No
Enclosed: Yes
Contiguous: Yes
Permitted: Yes
Wet Space: No
Addition: No
Conversion: No

22 Floor 2 - Family Room



Dimensions: 25'7" x 20'2"
Area: 516 sq. ft
Counted as Living Area: Yes

Heated: Yes
Finished: Yes
Enclosed: Yes
Contiguous: Yes
Permitted: Yes
Wet Space: No
Addition: No
Conversion: No

23 Floor 2 - Hall

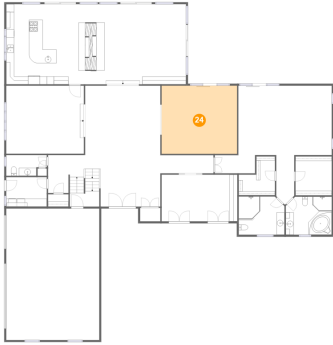


Dimensions: 4'6" x 12'6"
Area: 52 sq. ft
Counted as Living Area: Yes

Heated: Yes
Finished: Yes
Enclosed: Yes
Contiguous: Yes
Permitted: Yes
Wet Space: No
Addition: No
Conversion: No

105 Jefferson Run Road, Great Falls, Fairfax County, Virginia, United States, 22066

24 Floor 2 - Living Room



Dimensions: 19'0" x 17'2"
Area: 326 sq. ft
Counted as Living Area:
Yes

Heated: Yes
Finished: Yes
Enclosed: Yes
Contiguous:
Yes
Permitted: Yes
Wet Space: No
Addition: No
Conversion: No

25 Floor 2 - Hall



Dimensions: 13'5" x 4'7"
Area: 61 sq. ft
Counted as Living Area:
Yes

Heated: Yes
Finished: Yes
Enclosed: Yes
Contiguous:
Yes
Permitted: Yes
Wet Space: No
Addition: No
Conversion: No

26 Floor 2 - W.i.c.



Dimensions: 9'1" x 9'10"
Area: 89 sq. ft
Counted as Living Area:
Yes

Heated: Yes
Finished: Yes
Enclosed: Yes
Contiguous:
Yes
Permitted: Yes
Wet Space: No
Addition: No
Conversion: No

105 Jefferson Run Road, Great Falls, Fairfax County, Virginia, United States, 22066

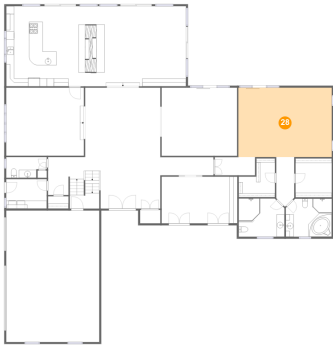
27 Floor 2 - Hall



Dimensions: 7'5" x 3'11"
Area: 29 sq. ft
Counted as Living Area:
Yes

Heated: Yes
Finished: Yes
Enclosed: Yes
Contiguous:
Yes
Permitted: Yes
Wet Space: No
Addition: No
Conversion: No

28 Floor 2 - Primary Bedroom



Dimensions: 23'6" x 17'5"
Area: 410 sq. ft
Counted as Living Area:
Yes

Heated: Yes
Finished: Yes
Enclosed: Yes
Contiguous:
Yes
Permitted: Yes
Wet Space: No
Addition: No
Conversion: No

29 Floor 2 - Hall



Dimensions: 10'2" x 4'7"
Area: 46 sq. ft
Counted as Living Area:
Yes

Heated: Yes
Finished: Yes
Enclosed: Yes
Contiguous:
Yes
Permitted: Yes
Wet Space: No
Addition: No
Conversion: No

105 Jefferson Run Road, Great Falls, Fairfax County, Virginia, United States, 22066

30 Floor 2 - Hall



Dimensions: 9'4" x 9'7"
Area: 86 sq. ft
Counted as Living Area:
Yes

Heated: Yes
Finished: Yes
Enclosed: Yes
Contiguous:
Yes
Permitted: Yes
Wet Space: No
Addition: No
Conversion: No

31 Floor 2 - Bath



Dimensions: 11'6" x 9'7"
Area: 108 sq. ft
Counted as Living Area:
Yes

Heated: Yes
Finished: Yes
Enclosed: Yes
Contiguous:
Yes
Permitted: Yes
Wet Space: Yes
Addition: No
Conversion: No

32 Floor 2 - Laundry

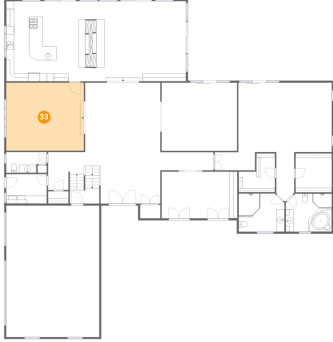


Dimensions: 10'2" x 7'5"
Area: 76 sq. ft
Counted as Living Area:
Yes

Heated: Yes
Finished: Yes
Enclosed: Yes
Contiguous:
Yes
Permitted: Yes
Wet Space: No
Addition: No
Conversion: No

105 Jefferson Run Road, Great Falls, Fairfax County, Virginia, United States, 22066

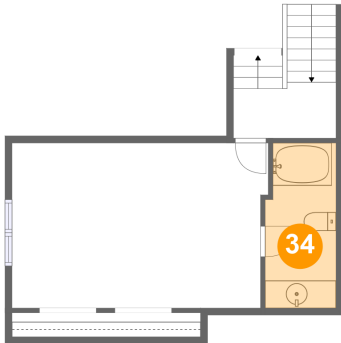
33 Floor 2 - Dining Room



Dimensions: 19'7" x 17'1"
Area: 335 sq. ft
Counted as Living Area:
Yes

Heated: Yes
Finished: Yes
Enclosed: Yes
Contiguous:
Yes
Permitted: Yes
Wet Space: No
Addition: No
Conversion: No

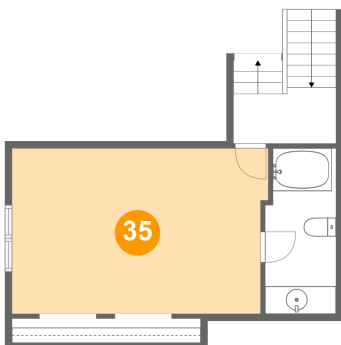
34 Floor 3 - Bath



Dimensions: 5'1" x 11'11"
Area: 59 sq. ft
Counted as Living Area:
Yes

Heated: Yes
Finished: Yes
Enclosed: Yes
Contiguous:
Yes
Permitted: Yes
Wet Space: Yes
Addition: No
Conversion: No

35 Floor 3 - Bedroom

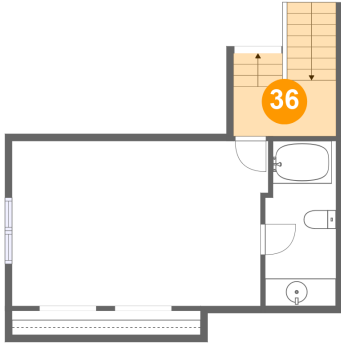


Dimensions: 18'6" x 11'11"
Area: 216 sq. ft
Counted as Living Area:
Yes

Heated: Yes
Finished: Yes
Enclosed: Yes
Contiguous:
Yes
Permitted: Yes
Wet Space: No
Addition: No
Conversion: No

105 Jefferson Run Road, Great Falls, Fairfax County, Virginia, United States, 22066

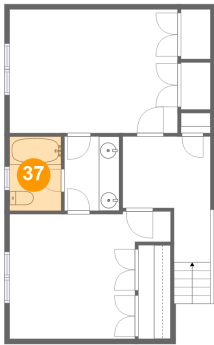
36 Floor 3 - Hall



Dimensions: 7'5" x 4'0"
Area: 57 sq. ft
Counted as Living Area:
Yes

Heated: Yes
Finished: Yes
Enclosed: Yes
Contiguous:
Yes
Permitted: Yes
Wet Space: No
Addition: No
Conversion: No

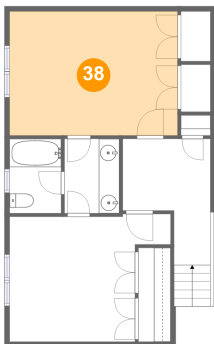
37 Floor 4 - Bath



Dimensions: 5'0" x 7'3"
Area: 36 sq. ft
Counted as Living Area:
Yes

Heated: Yes
Finished: Yes
Enclosed: Yes
Contiguous:
Yes
Permitted: Yes
Wet Space: Yes
Addition: No
Conversion: No

38 Floor 4 - Bedroom

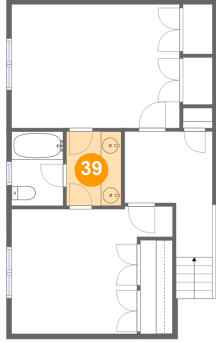


Dimensions: 16'4" x 12'0"
Area: 197 sq. ft
Counted as Living Area: No

Heated: Yes
Finished: Yes
Enclosed: Yes
Contiguous: Yes
Permitted: Yes
Wet Space: No
Addition: No
Conversion: No

105 Jefferson Run Road, Great Falls, Fairfax County, Virginia, United States, 22066

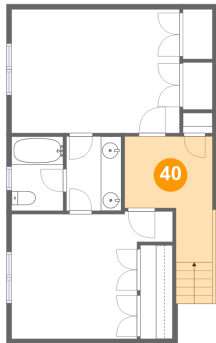
39 Floor 4 - Bath



Dimensions: 5'4" x 7'3"
Area: 39 sq. ft
Counted as Living Area:
Yes

Heated: Yes
Finished: Yes
Enclosed: Yes
Contiguous:
Yes
Permitted: Yes
Wet Space: Yes
Addition: No
Conversion: No

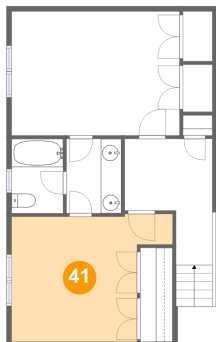
40 Floor 4 - Hall



Dimensions: 8'6" x 12'3"
Area: 95 sq. ft
Counted as Living Area:
Yes

Heated: Yes
Finished: Yes
Enclosed: Yes
Contiguous:
Yes
Permitted: Yes
Wet Space: No
Addition: No
Conversion: No

41 Floor 4 - Bedroom



Dimensions: 15'8" x 12'5"
Area: 159 sq. ft
Counted as Living Area: No

Heated: Yes
Finished: Yes
Enclosed: Yes
Contiguous: Yes
Permitted: Yes
Wet Space: No
Addition: No
Conversion: No