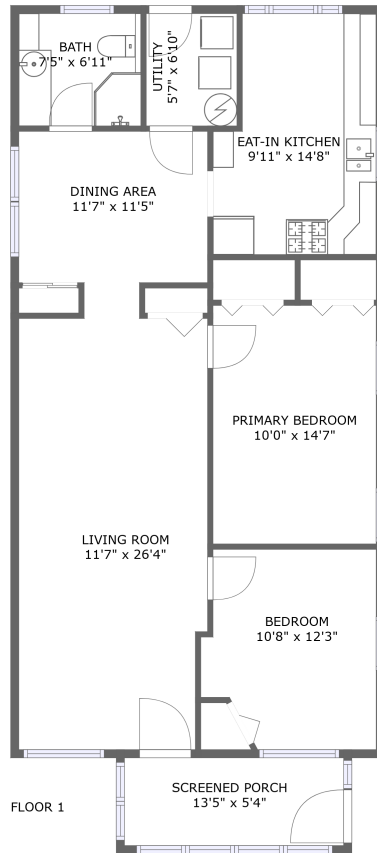


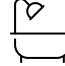
# 8547 Greig Street, Sodus Point, Wayne County, New York, United States, 14555




## Property Summary

 **0** garages

 **2** bedrooms

 **1** bathrooms

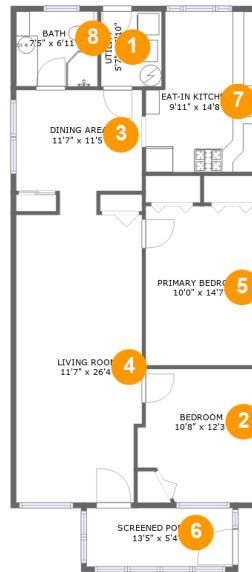
 **0** half baths

 **1** floors

 **1,013**  
Gross Living  
Area sqft

 **1,139**  
total sqft

# 8547 Greig Street, Sodus Point, Wayne County, New York, United States, 14555



## Room Dimensions

Floor 1

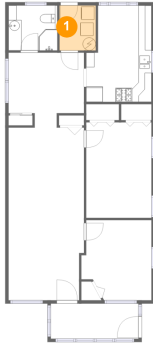
Total sqft: 1139

Living area: 1013

#	Room name	Dimensions	Area (sqft)	Counted as Living Area
1	Utility	5'7" x 6'10"	38 sq. ft	No
2	Bedroom	10'8" x 12'3"	119 sq. ft	Yes
3	Dining Area	11'7" x 11'5"	114 sq. ft	Yes
4	Living Room	11'7" x 26'4"	300 sq. ft	Yes
5	Primary Bedroom	10'0" x 14'7"	146 sq. ft	Yes
6	Screened Porch	13'5" x 5'4"	72 sq. ft	No
7	Eat-in Kitchen	9'11" x 14'8"	134 sq. ft	Yes
8	Bath	7'5" x 6'11"	51 sq. ft	Yes

# 8547 Greig Street, Sodus Point, Wayne County, New York, United States, 14555

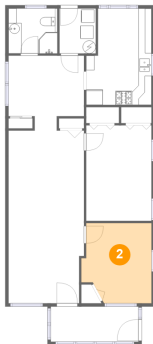
## 1 Floor 1 - Utility



**Dimensions:** 5'7" x 6'10"  
**Area:** 38 sq. ft  
**Counted as Living Area:** No

**Heated:** Yes  
**Finished:** Yes  
**Enclosed:** Yes  
**Contiguous:** Yes  
**Permitted:** Yes  
**Wet Space:** No  
**Addition:** No  
**Conversion:** No

## 2 Floor 1 - Bedroom

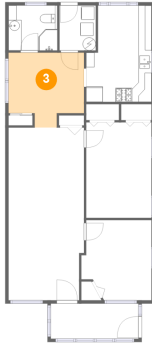


**Dimensions:** 10'8" x 12'3"  
**Area:** 119 sq. ft  
**Counted as Living Area:**  
Yes

**Heated:** Yes  
**Finished:** Yes  
**Enclosed:** Yes  
**Contiguous:**  
Yes  
**Permitted:** Yes  
**Wet Space:** No  
**Addition:** No  
**Conversion:** No

# 8547 Greig Street, Sodus Point, Wayne County, New York, United States, 14555

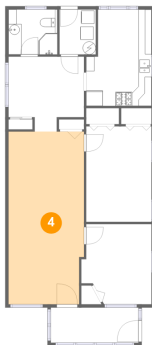
## 3 Floor 1 - Dining Area



Dimensions: 11'7" x 11'5"  
Area: 114 sq. ft  
Counted as Living Area:  
Yes

Heated: Yes  
Finished: Yes  
Enclosed: Yes  
Contiguous:  
Yes  
Permitted: Yes  
Wet Space: No  
Addition: No  
Conversion: No

## 4 Floor 1 - Living Room



Dimensions: 11'7" x 26'4"  
Area: 300 sq. ft  
Counted as Living Area:  
Yes

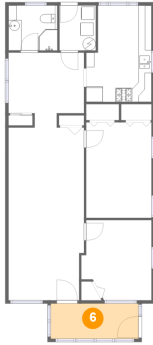
Heated: Yes  
Finished: Yes  
Enclosed: Yes  
Contiguous:  
Yes  
Permitted: Yes  
Wet Space: No  
Addition: No  
Conversion: No

## 5 Floor 1 - Primary Bedroom



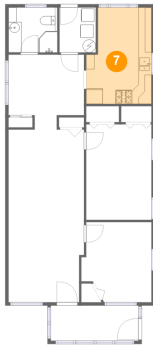
Dimensions: 10'0" x 14'7"  
Area: 146 sq. ft  
Counted as Living Area:  
Yes

Heated: Yes  
Finished: Yes  
Enclosed: Yes  
Contiguous:  
Yes  
Permitted: Yes  
Wet Space: No  
Addition: No  
Conversion: No

**8547 Greig Street, Sodus Point, Wayne County,  
New York, United States, 14555****6 Floor 1 - Screened Porch**

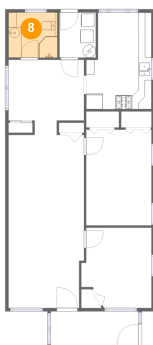
Dimensions: 13'5" x 5'4"  
Area: 72 sq. ft  
Counted as Living Area: No

Heated: No  
Finished: Yes  
Enclosed: No  
Contiguous: Yes  
Permitted: Yes  
Wet Space: No  
Addition: No  
Conversion: No

**7 Floor 1 - Eat-in Kitchen**

Dimensions: 9'11" x 14'8"  
Area: 134 sq. ft  
Counted as Living Area:  
Yes

Heated: Yes  
Finished: Yes  
Enclosed: Yes  
Contiguous:  
Yes  
Permitted: Yes  
Wet Space: No  
Addition: No  
Conversion: No

**8 Floor 1 - Bath**

Dimensions: 7'5" x 6'11"  
Area: 51 sq. ft  
Counted as Living Area:  
Yes

Heated: Yes  
Finished: Yes  
Enclosed: Yes  
Contiguous:  
Yes  
Permitted: Yes  
Wet Space: Yes  
Addition: No  
Conversion: No