

Home data report

112 Old Bay Lp, Pataskala, OH, US



Total Area: 2623 sq. ft

Below Ground: 0 sq. ft, 1st Floor: 1123 sq. ft, 2nd Floor: 1500 sq. ft

Excluded: Basement 1115 sq. ft, Garage 555 sq. ft, Fireplace 13 sq. ft, Walls: 267 sq. ft

Property summary

 **3** Floors

 **5** Bedrooms

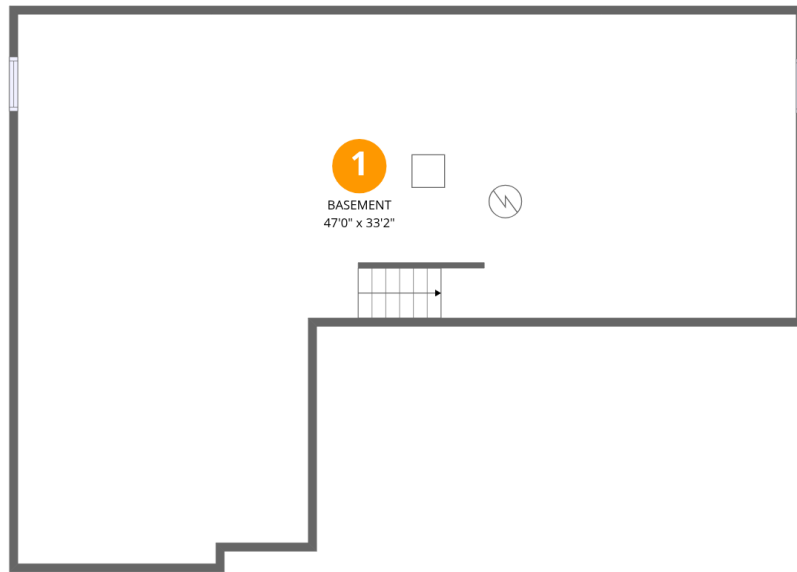
 **2** Bathrooms

Home data report

112 Old Bay Lp, Pataskala, OH, US

 **1**
Half baths

 **1**
Garages



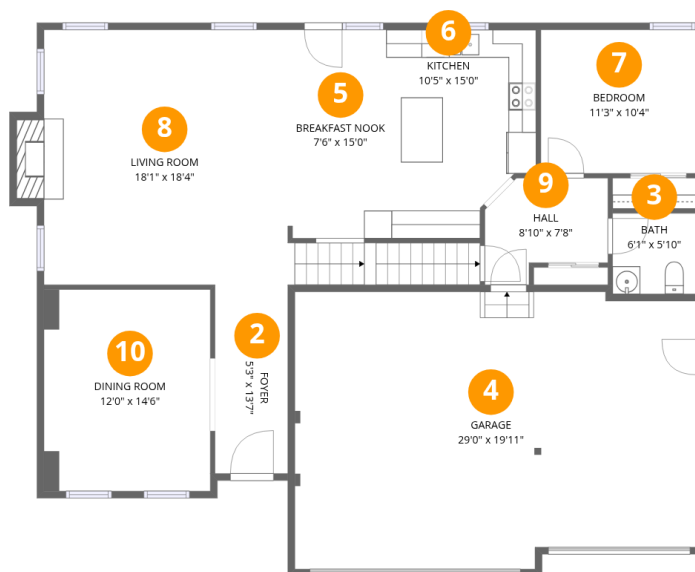
Room dimensions

Floor 1 Below grade

Total: 0sqft

Excluded: 1115sqft

| # | | Dimensions | sqft | Counted as living area |
|---|----------|---------------|-------------|------------------------|
| 1 | Basement | 47'0" x 33'2" | 1115 sq. ft | No |

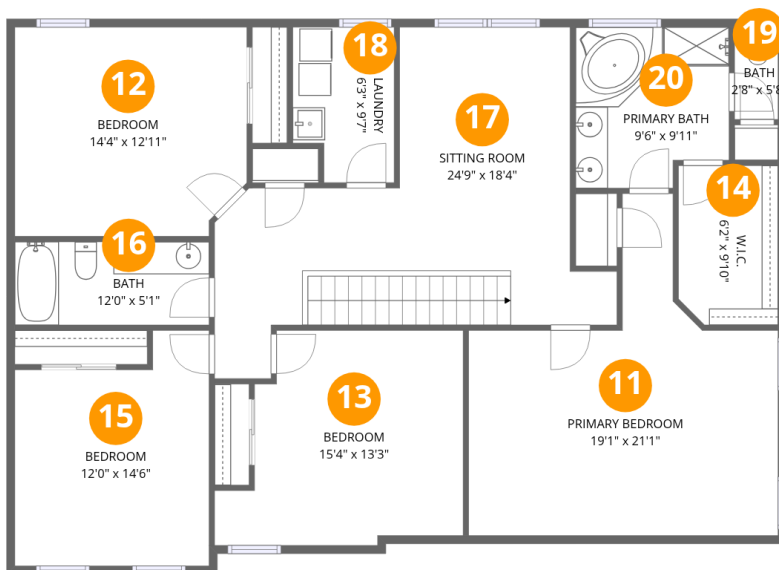


Room dimensions

Floor 2

Total: 1123sqft Excluded: 568sqft

| # | | Dimensions | sqft | Counted as living area |
|----|----------------|----------------|------------|------------------------|
| 2 | Foyer | 5'3" x 13'7" | 71 sq. ft | Yes |
| 3 | Bath | 6'1" x 5'10" | 35 sq. ft | Yes |
| 4 | Garage | 29'0" x 19'11" | 555 sq. ft | No |
| 5 | Breakfast Nook | 7'6" x 15'0" | 113 sq. ft | Yes |
| 6 | Kitchen | 10'5" x 15'0" | 140 sq. ft | Yes |
| 7 | Bedroom | 11'3" x 10'4" | 116 sq. ft | Yes |
| 8 | Living Room | 18'1" x 18'4" | 375 sq. ft | Yes |
| 9 | Hall | 8'10" x 7'8" | 56 sq. ft | Yes |
| 10 | Dining Room | 12'0" x 14'6" | 173 sq. ft | Yes |



Room dimensions

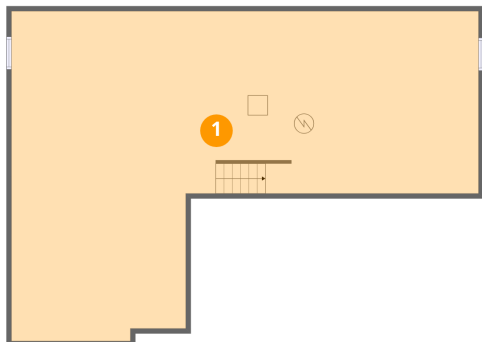
Floor 3

Total: 1500sqft

Excluded: 0sqft

| # | | Dimensions | sqft | Counted as living area |
|----|-----------------|----------------|------------|------------------------|
| 11 | Primary Bedroom | 19'1" x 21'1" | 269 sq. ft | Yes |
| 12 | Bedroom | 14'4" x 12'11" | 179 sq. ft | Yes |
| 13 | Bedroom | 15'4" x 13'3" | 171 sq. ft | Yes |
| 14 | W.I.C. | 6'2" x 9'10" | 59 sq. ft | Yes |
| 15 | Bedroom | 12'0" x 14'6" | 153 sq. ft | Yes |
| 16 | Bath | 12'0" x 5'1" | 61 sq. ft | Yes |
| 17 | Sitting Room | 24'9" x 18'4" | 307 sq. ft | Yes |
| 18 | Laundry | 6'3" x 9'7" | 55 sq. ft | Yes |
| 19 | Bath | 2'8" x 5'8" | 15 sq. ft | Yes |
| 20 | Primary Bath | 9'6" x 9'11" | 88 sq. ft | Yes |

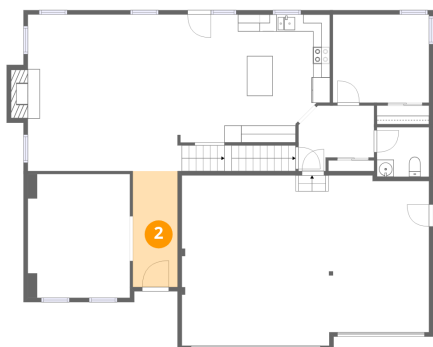
1 Floor 1 - Basement



Dimensions: 47'0" x 33'2"
Area: 1115 sq. ft
Counted as living area: No

Heated: Yes
Finished: No
Enclosed: Yes
Contiguous: Yes
Permitted: Yes
Wet space: No
Addition: No
Conversion: No

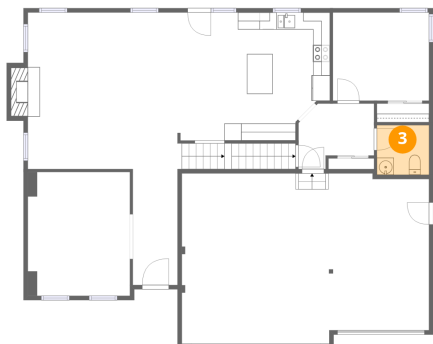
2 Floor 2 - Foyer



Dimensions: 5'3" x 13'7"
Area: 71 sq. ft
Counted as living area: Yes

Heated: Yes
Finished: Yes
Enclosed: Yes
Contiguous: Yes
Permitted: Yes
Wet space: No
Addition: No
Conversion: No

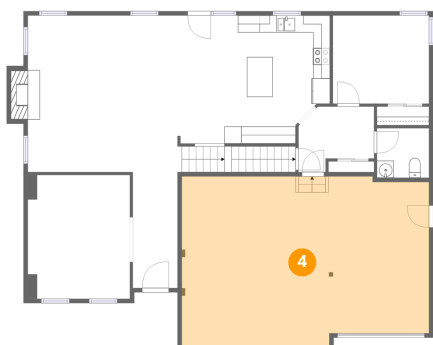
3 Floor 2 - Bath



Dimensions: 6'1" x 5'10"
Area: 35 sq. ft
Counted as living area: Yes

Heated: Yes
Finished: Yes
Enclosed: Yes
Contiguous: Yes
Permitted: Yes
Wet space: Yes
Addition: No
Conversion: No

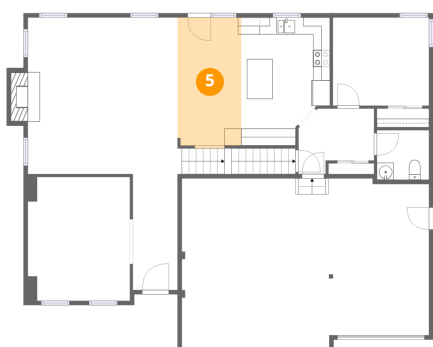
4 Floor 2 - Garage



Dimensions: 29'0" x 19'11"
Area: 555 sq. ft
Counted as living area: No

Heated: No
Finished: No
Enclosed: Yes
Contiguous: Yes
Permitted: Yes
Wet space: No
Addition: No
Conversion: No

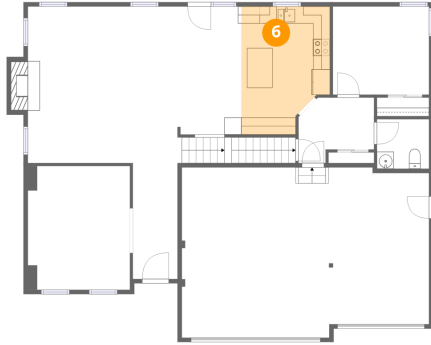
5 Floor 2 - Breakfast Nook



Dimensions: 7'6" x 15'0"
Area: 113 sq. ft
Counted as living area: Yes

Heated: Yes
Finished: Yes
Enclosed: Yes
Contiguous: Yes
Permitted: Yes
Wet space: No
Addition: No
Conversion: No

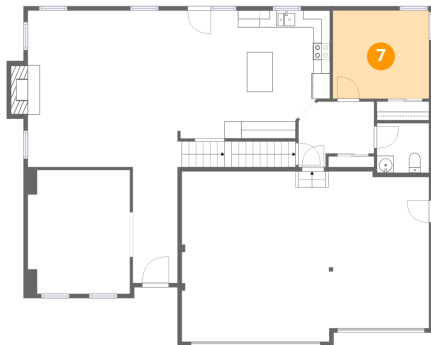
6 Floor 2 - Kitchen



Dimensions: 10'5" x 15'0"
Area: 140 sq. ft
Counted as living area: Yes

Heated: Yes
Finished: Yes
Enclosed: Yes
Contiguous: Yes
Permitted: Yes
Wet space: No
Addition: No
Conversion: No

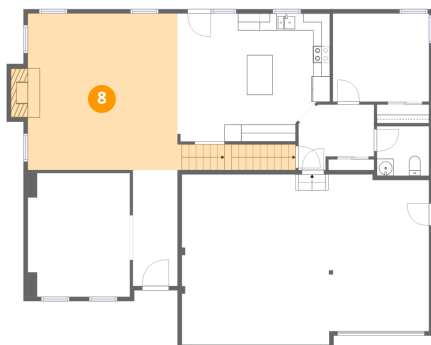
7 Floor 2 - Bedroom



Dimensions: 11'3" x 10'4"
Area: 116 sq. ft
Counted as living area: Yes

Heated: Yes
Finished: Yes
Enclosed: Yes
Contiguous: Yes
Permitted: Yes
Wet space: No
Addition: No
Conversion: No

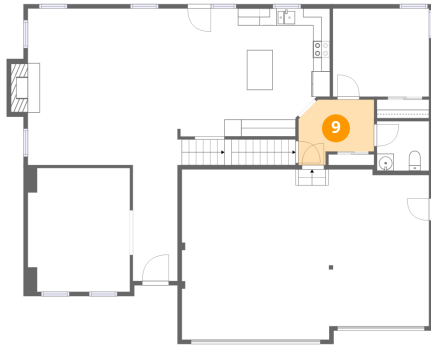
8 Floor 2 - Living Room



Dimensions: 18'1" x 18'4"
Area: 375 sq. ft
Counted as living area: Yes

Heated: Yes
Finished: Yes
Enclosed: Yes
Contiguous: Yes
Permitted: Yes
Wet space: No
Addition: No
Conversion: No

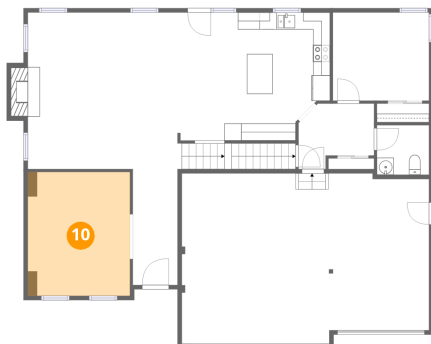
9 Floor 2 - Hall



Dimensions: 8'10" x 7'8"
Area: 56 sq. ft
Counted as living area: Yes

Heated: Yes
Finished: Yes
Enclosed: Yes
Contiguous: Yes
Permitted: Yes
Wet space: No
Addition: No
Conversion: No

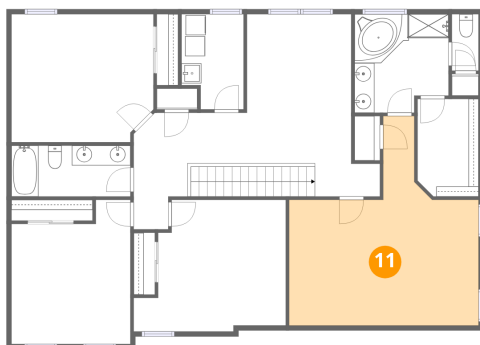
10 Floor 2 - Dining Room



Dimensions: 12'0" x 14'6"
Area: 173 sq. ft
Counted as living area: Yes

Heated: Yes
Finished: Yes
Enclosed: Yes
Contiguous: Yes
Permitted: Yes
Wet space: No
Addition: No
Conversion: No

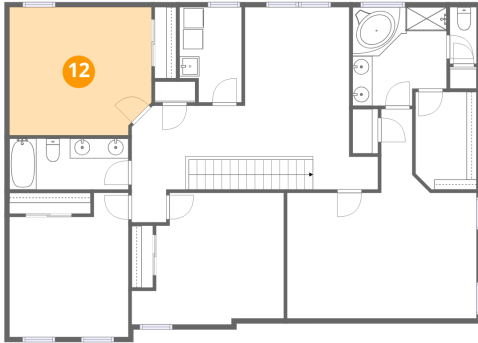
11 Floor 3 - Primary Bedroom



Dimensions: 19'1" x 21'1"
Area: 269 sq. ft
Counted as living area: Yes

Heated: Yes
Finished: Yes
Enclosed: Yes
Contiguous: Yes
Permitted: Yes
Wet space: No
Addition: No
Conversion: No

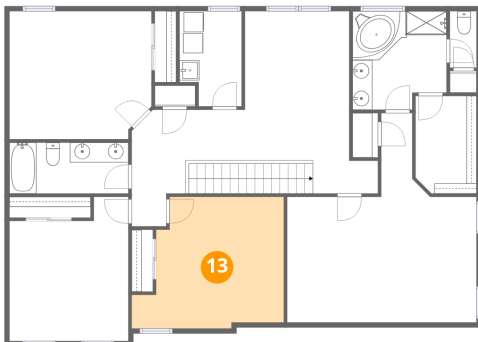
12 Floor 3 - Bedroom



Dimensions: 14'4" x 12'11"
Area: 179 sq. ft
Counted as living area: Yes

Heated: Yes
Finished: Yes
Enclosed: Yes
Contiguous: Yes
Permitted: Yes
Wet space: No
Addition: No
Conversion: No

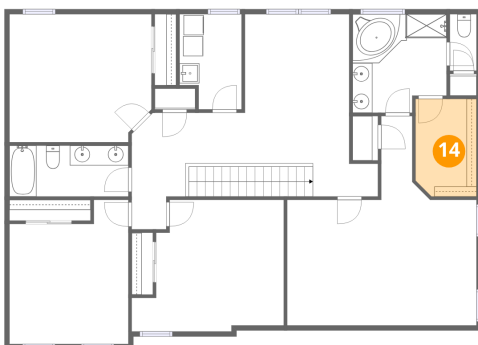
13 Floor 3 - Bedroom



Dimensions: 15'4" x 13'3"
Area: 171 sq. ft
Counted as living area: Yes

Heated: Yes
Finished: Yes
Enclosed: Yes
Contiguous: Yes
Permitted: Yes
Wet space: No
Addition: No
Conversion: No

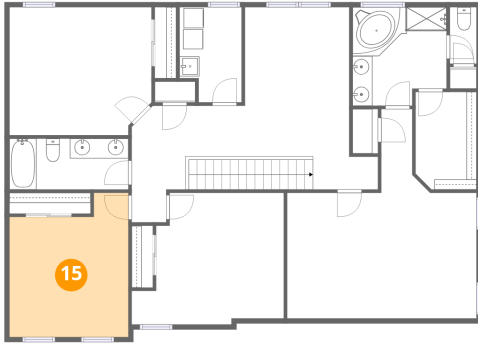
14 Floor 3 - W.I.C.



Dimensions: 6'2" x 9'10"
Area: 59 sq. ft
Counted as living area: Yes

Heated: Yes
Finished: Yes
Enclosed: Yes
Contiguous: Yes
Permitted: Yes
Wet space: No
Addition: No
Conversion: No

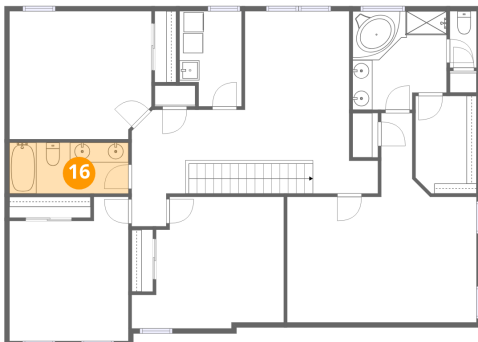
15 Floor 3 - Bedroom



Dimensions: 12'0" x 14'6"
Area: 153 sq. ft
Counted as living area: Yes

Heated: Yes
Finished: Yes
Enclosed: Yes
Contiguous: Yes
Permitted: Yes
Wet space: No
Addition: No
Conversion: No

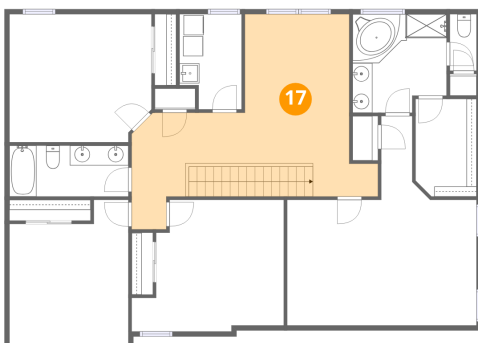
16 Floor 3 - Bath



Dimensions: 12'0" x 5'1"
Area: 61 sq. ft
Counted as living area: Yes

Heated: Yes
Finished: Yes
Enclosed: Yes
Contiguous: Yes
Permitted: Yes
Wet space: Yes
Addition: No
Conversion: No

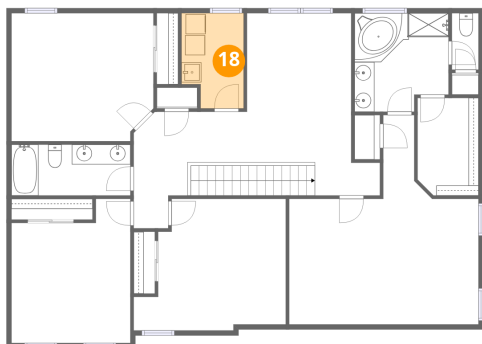
17 Floor 3 - Sitting Room



Dimensions: 24'9" x 18'4"
Area: 307 sq. ft
Counted as living area: Yes

Heated: Yes
Finished: Yes
Enclosed: Yes
Contiguous: Yes
Permitted: Yes
Wet space: No
Addition: No
Conversion: No

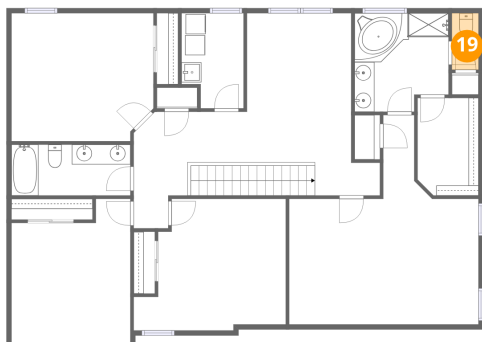
18 Floor 3 - Laundry



Dimensions: 6'3" x 9'7"
Area: 55 sq. ft
Counted as living area: Yes

Heated: Yes
Finished: Yes
Enclosed: Yes
Contiguous: Yes
Permitted: Yes
Wet space: No
Addition: No
Conversion: No

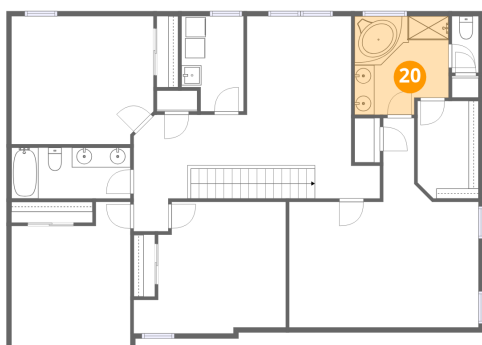
19 Floor 3 - Bath



Dimensions: 2'8" x 5'8"
Area: 15 sq. ft
Counted as living area: Yes

Heated: Yes
Finished: Yes
Enclosed: Yes
Contiguous: Yes
Permitted: Yes
Wet space: No
Addition: No
Conversion: No

20 Floor 3 - Primary Bath



Dimensions: 9'6" x 9'11"
Area: 88 sq. ft
Counted as living area: Yes

Heated: Yes
Finished: Yes
Enclosed: Yes
Contiguous: Yes
Permitted: Yes
Wet space: Yes
Addition: No
Conversion: No