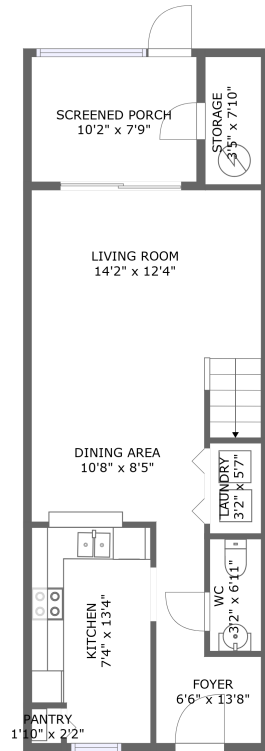
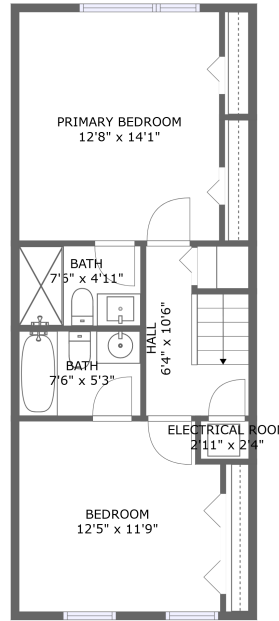


29918 Playa Del Rey Lane, Wesley Chapel, Pasco County, Florida, United States, 33543



FLOOR 1




FLOOR 2

Property Summary

 **0** garages

 **2** bedrooms

 **2** bathrooms

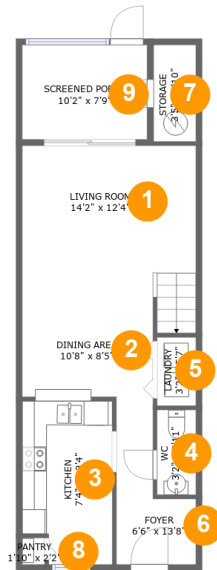
 **1** half baths

 **2** floors

 **1,063** Gross Living Area sqft

 **1,191** total sqft

29918 Playa Del Rey Lane, Wesley Chapel, Pasco County, Florida, United States, 33543



Room Dimensions

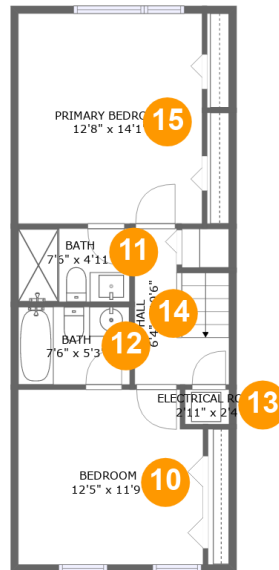
Floor 1

Total sqft: 635

Living area: 514

#	Room name	Dimensions	Area (sqft)	Counted as Living Area
1	Living Room	14'2" x 12'4"	184 sq. ft	Yes
2	Dining Area	10'8" x 8'5"	88 sq. ft	Yes
3	Kitchen	7'4" x 13'4"	92 sq. ft	Yes
4	Wc	3'2" x 6'11"	22 sq. ft	Yes
5	Laundry	3'2" x 5'7"	18 sq. ft	Yes
6	Foyer	6'6" x 13'8"	59 sq. ft	Yes
7	Storage	3'5" x 7'10"	27 sq. ft	No
8	Pantry	1'10" x 2'2"	4 sq. ft	Yes
9	Screened Porch	10'2" x 7'9"	78 sq. ft	No

29918 Playa Del Rey Lane, Wesley Chapel, Pasco County, Florida, United States, 33543



Room Dimensions

Floor 2

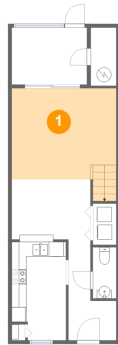
Total sqft: 556

Living area: 549

#	Room name	Dimensions	Area (sqft)	Counted as Living Area
10	Bedroom	12'5" x 11'9"	142 sq. ft	Yes
11	Bath	7'6" x 4'11"	37 sq. ft	Yes
12	Bath	7'6" x 5'3"	39 sq. ft	Yes
13	Electrical Room	2'11" x 2'4"	7 sq. ft	No
14	Hall	6'4" x 10'6"	56 sq. ft	Yes
15	Primary Bedroom	12'8" x 14'1"	175 sq. ft	Yes

29918 Playa Del Rey Lane, Wesley Chapel, Pasco County, Florida, United States, 33543

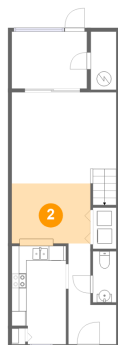
1 Floor 1 - Living Room



Dimensions: 14'2" x 12'4"
Area: 184 sq. ft
Counted as Living Area:
Yes

Heated: Yes
Finished: Yes
Enclosed: Yes
Contiguous:
Yes
Permitted: Yes
Wet Space: No
Addition: No
Conversion: No

2 Floor 1 - Dining Area

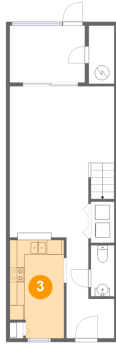


Dimensions: 10'8" x 8'5"
Area: 88 sq. ft
Counted as Living Area:
Yes

Heated: Yes
Finished: Yes
Enclosed: Yes
Contiguous:
Yes
Permitted: Yes
Wet Space: No
Addition: No
Conversion: No

29918 Playa Del Rey Lane, Wesley Chapel, Pasco County, Florida, United States, 33543

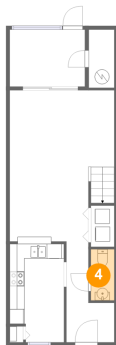
3 Floor 1 - Kitchen



Dimensions: 7'4" x 13'4"
Area: 92 sq. ft
Counted as Living Area:
Yes

Heated: Yes
Finished: Yes
Enclosed: Yes
Contiguous:
Yes
Permitted: Yes
Wet Space: No
Addition: No
Conversion: No

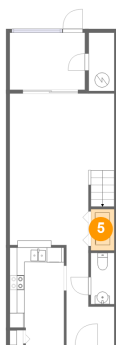
4 Floor 1 - Wc



Dimensions: 3'2" x 6'11"
Area: 22 sq. ft
Counted as Living Area:
Yes

Heated: Yes
Finished: Yes
Enclosed: Yes
Contiguous:
Yes
Permitted: Yes
Wet Space: Yes
Addition: No
Conversion: No

5 Floor 1 - Laundry

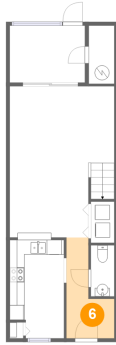


Dimensions: 3'2" x 5'7"
Area: 18 sq. ft
Counted as Living Area:
Yes

Heated: Yes
Finished: Yes
Enclosed: Yes
Contiguous:
Yes
Permitted: Yes
Wet Space: No
Addition: No
Conversion: No

29918 Playa Del Rey Lane, Wesley Chapel, Pasco County, Florida, United States, 33543

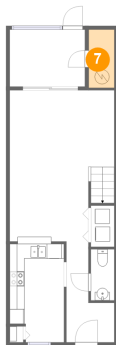
6 Floor 1 - Foyer



Dimensions: 6'6" x 13'8"
Area: 59 sq. ft
Counted as Living Area: Yes

Heated: Yes
Finished: Yes
Enclosed: Yes
Contiguous: Yes
Permitted: Yes
Wet Space: No
Addition: No
Conversion: No

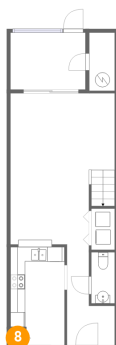
7 Floor 1 - Storage



Dimensions: 3'5" x 7'10"
Area: 27 sq. ft
Counted as Living Area: No

Heated: No
Finished: No
Enclosed: No
Contiguous: Yes
Permitted: Yes
Wet Space: No
Addition: No
Conversion: No

8 Floor 1 - Pantry

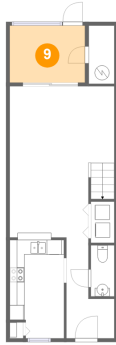


Dimensions: 1'10" x 2'2"
Area: 4 sq. ft
Counted as Living Area: Yes

Heated: Yes
Finished: Yes
Enclosed: Yes
Contiguous: Yes
Permitted: Yes
Wet Space: No
Addition: No
Conversion: No

29918 Playa Del Rey Lane, Wesley Chapel, Pasco County, Florida, United States, 33543

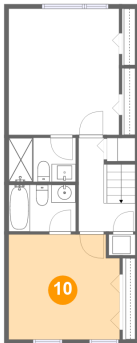
9 Floor 1 - Screened Porch



Dimensions: 10'2" x 7'9"
Area: 78 sq. ft
Counted as Living Area: No

Heated: No
Finished: Yes
Enclosed: No
Contiguous: Yes
Permitted: Yes
Wet Space: No
Addition: No
Conversion: No

10 Floor 2 - Bedroom



Dimensions: 12'5" x 11'9"
Area: 142 sq. ft
Counted as Living Area: Yes

Heated: Yes
Finished: Yes
Enclosed: Yes
Contiguous: Yes
Permitted: Yes
Wet Space: No
Addition: No
Conversion: No

11 Floor 2 - Bath



Dimensions: 7'6" x 4'11"
Area: 37 sq. ft
Counted as Living Area: Yes

Heated: Yes
Finished: Yes
Enclosed: Yes
Contiguous: Yes
Permitted: Yes
Wet Space: Yes
Addition: No
Conversion: No

29918 Playa Del Rey Lane, Wesley Chapel, Pasco County, Florida, United States, 33543

12 Floor 2 - Bath



Dimensions: 7'6" x 5'3"
Area: 39 sq. ft
Counted as Living Area:
Yes

Heated: Yes
Finished: Yes
Enclosed: Yes
Contiguous:
Yes
Permitted: Yes
Wet Space: Yes
Addition: No
Conversion: No

13 Floor 2 - Electrical Room



Dimensions: 2'11" x 2'4"
Area: 7 sq. ft
Counted as Living Area: No

Heated: No
Finished: No
Enclosed: Yes
Contiguous: Yes
Permitted: Yes
Wet Space: No
Addition: No
Conversion: No

14 Floor 2 - Hall

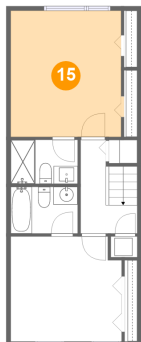


Dimensions: 6'4" x 10'6"
Area: 56 sq. ft
Counted as Living Area:
Yes

Heated: Yes
Finished: Yes
Enclosed: Yes
Contiguous:
Yes
Permitted: Yes
Wet Space: No
Addition: No
Conversion: No

29918 Playa Del Rey Lane, Wesley Chapel, Pasco County, Florida, United States, 33543

15 Floor 2 - Primary Bedroom



Dimensions: 12'8" x 14'1"
Area: 175 sq. ft
Counted as Living Area:
Yes

Heated: Yes
Finished: Yes
Enclosed: Yes
Contiguous:
Yes
Permitted: Yes
Wet Space: No
Addition: No
Conversion: No