

# 5141 Canter Drive, Nichols Estates, Cave Spring, Roanoke, Roanoke County, Virginia, United



## Property Summary

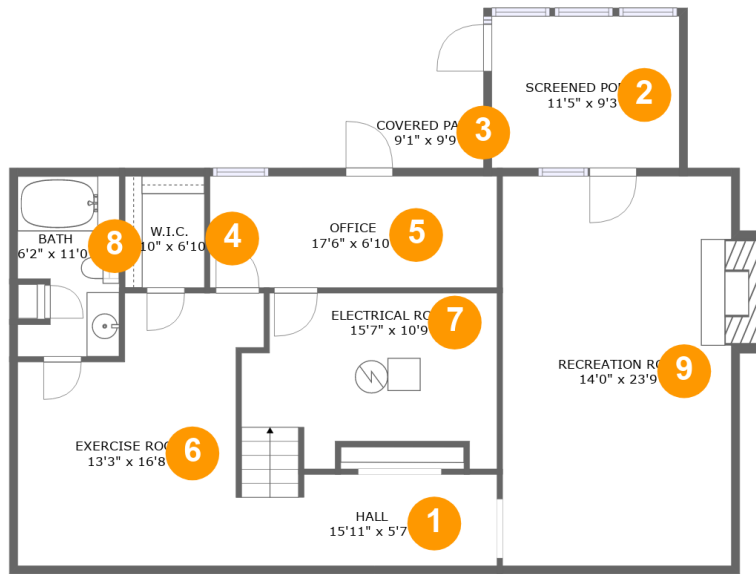
**1** garages    **4** bedrooms    **3** bathrooms    **1** half baths

**3** floors

**3,349** Gross Living Area sqft

**4,631** total sqft

**5141 Canter Drive, Nichols Estates, Cave Spring, Roanoke, Roanoke County, Virginia, United**



**Room Dimensions**

**Floor 1**

**Total sqft: 1299**

**Living area: 979**

#	Room name	Dimensions	Area (sqft)	Counted as Living Area
1	Hall	15'11" x 5'7"	98 sq. ft	Yes
2	Screened Porch	11'5" x 9'3"	106 sq. ft	No
3	Covered Patio	9'1" x 9'9"	62 sq. ft	No
4	W.i.c.	4'10" x 6'10"	33 sq. ft	Yes
5	Office	17'6" x 6'10"	119 sq. ft	Yes
6	Exercise Room	13'3" x 16'8"	200 sq. ft	Yes
7	Electrical Room	15'7" x 10'9"	137 sq. ft	No
8	Bath	6'2" x 11'0"	63 sq. ft	Yes
9	Recreation Room	14'0" x 23'9"	343 sq. ft	Yes

# 5141 Canter Drive, Nichols Estates, Cave Spring, Roanoke, Roanoke County, Virginia, United



## Room Dimensions

Floor 2

Total sqft: 2197

Living area: 1235

#	Room name	Dimensions	Area (sqft)	Counted as Living Area
10	Foyer	11'7" x 13'5"	134 sq. ft	Yes
11	Hall	6'9" x 3'5"	23 sq. ft	Yes
12	Dining Area	13'4" x 13'9"	183 sq. ft	Yes
13	Covered Deck	11'9" x 9'5"	111 sq. ft	No
14	Laundry	9'0" x 9'9"	88 sq. ft	Yes
15	Kitchen	18'1" x 10'9"	194 sq. ft	Yes
16	Living Room	18'4" x 11'3"	207 sq. ft	Yes
17	Wc	6'5" x 4'9"	31 sq. ft	Yes
18	Deck	20'0" x 9'5"	221 sq. ft	No
19	Family Room	18'4" x 12'10"	247 sq. ft	Yes
20	Porch	7'4" x 5'2"	38 sq. ft	No

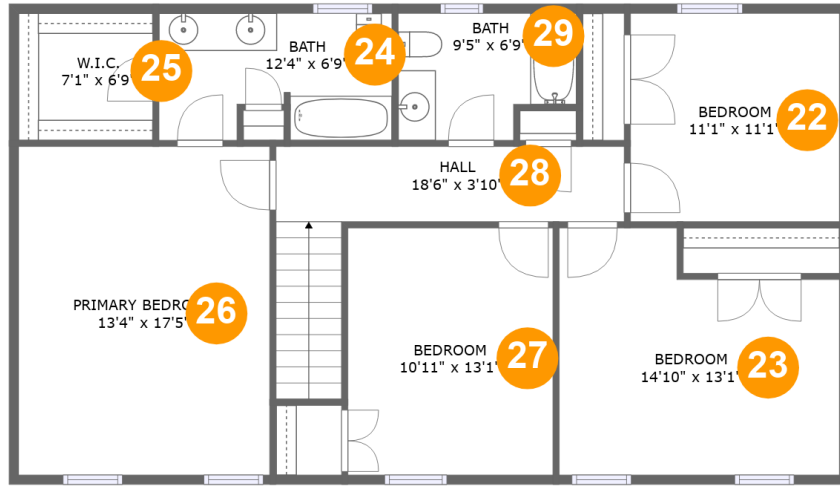
Scan captured on Tue, 22 Oct 2024 19:47:00 GMT

Information is calculated by CubiCasa technology; deemed highly reliable but not guaranteed.

**5141 Canter Drive, Nichols Estates, Cave Spring,  
Roanoke, Roanoke County, Virginia, United**

#	Room name	Dimensions	Area (sqft)	Counted as Living Area
21	Garage	21'11" x 29'2"	544 sq. ft	No

**5141 Canter Drive, Nichols Estates, Cave Spring, Roanoke, Roanoke County, Virginia, United**



**Room Dimensions**

**Floor 3**

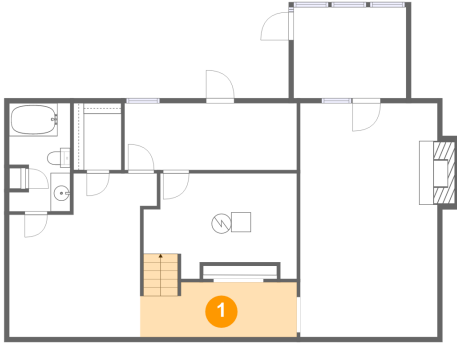
**Total sqft: 1135**

**Living area: 1135**

#	Room name	Dimensions	Area (sqft)	Counted as Living Area
22	Bedroom	11'1" x 11'1"	122 sq. ft	Yes
23	Bedroom	14'10" x 13'1"	171 sq. ft	Yes
24	Bath	12'4" x 6'9"	78 sq. ft	Yes
25	W.i.c.	7'1" x 6'9"	48 sq. ft	Yes
26	Primary Bedroom	13'4" x 17'5"	232 sq. ft	Yes
27	Bedroom	10'11" x 13'1"	142 sq. ft	Yes
28	Hall	18'6" x 3'10"	106 sq. ft	Yes
29	Bath	9'5" x 6'9"	57 sq. ft	Yes

# 5141 Canter Drive, Nichols Estates, Cave Spring, Roanoke, Roanoke County, Virginia, United

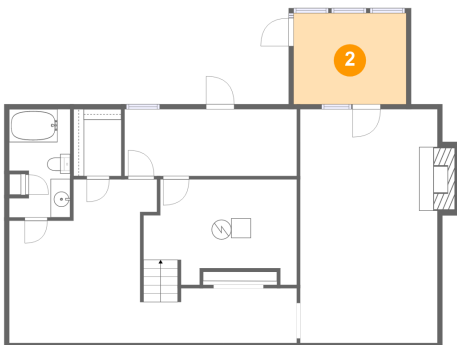
## 1 Floor 1 - Hall



Dimensions: 15'11" x 5'7"  
Area: 98 sq. ft  
Counted as Living Area:  
Yes

Heated: Yes  
Finished: Yes  
Enclosed: Yes  
Contiguous:  
Yes  
Permitted: Yes  
Wet Space: No  
Addition: No  
Conversion: No

## 2 Floor 1 - Screened Porch

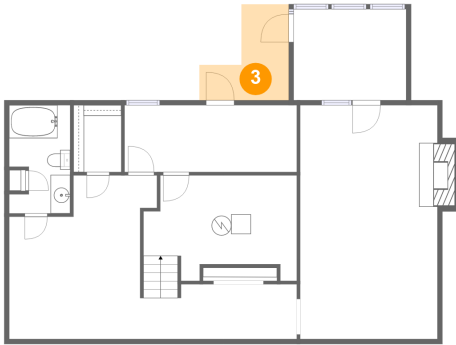


Dimensions: 11'5" x 9'3"  
Area: 106 sq. ft  
Counted as Living Area: No

Heated: No  
Finished: Yes  
Enclosed: No  
Contiguous: Yes  
Permitted: Yes  
Wet Space: No  
Addition: No  
Conversion: No

# 5141 Canter Drive, Nichols Estates, Cave Spring, Roanoke, Roanoke County, Virginia, United

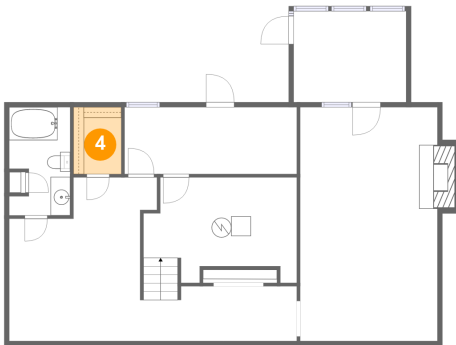
## 3 Floor 1 - Covered Patio



Dimensions: 9'1" x 9'9"  
Area: 62 sq. ft  
Counted as Living Area: No

Heated: No  
Finished: Yes  
Enclosed: No  
Contiguous: Yes  
Permitted: Yes  
Wet Space: No  
Addition: No  
Conversion: No

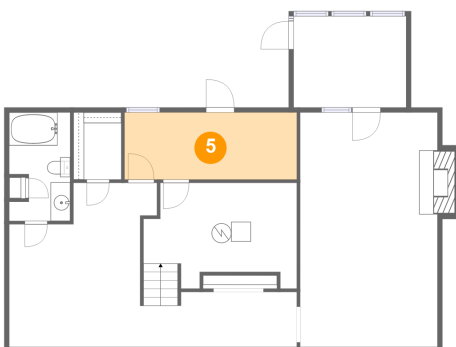
## 4 Floor 1 - W.i.c.



Dimensions: 4'10" x 6'10"  
Area: 33 sq. ft  
Counted as Living Area:  
Yes

Heated: Yes  
Finished: Yes  
Enclosed: Yes  
Contiguous:  
Yes  
Permitted: Yes  
Wet Space: No  
Addition: No  
Conversion: No

## 5 Floor 1 - Office

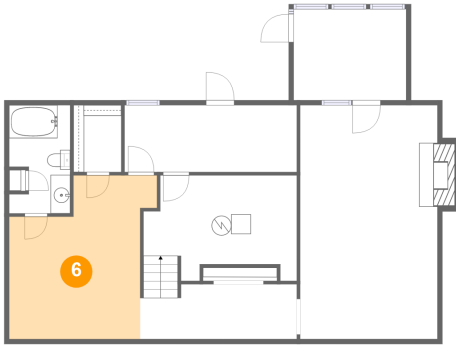


Dimensions: 17'6" x 6'10"  
Area: 119 sq. ft  
Counted as Living Area:  
Yes

Heated: Yes  
Finished: Yes  
Enclosed: Yes  
Contiguous:  
Yes  
Permitted: Yes  
Wet Space: No  
Addition: No  
Conversion: No

# 5141 Canter Drive, Nichols Estates, Cave Spring, Roanoke, Roanoke County, Virginia, United

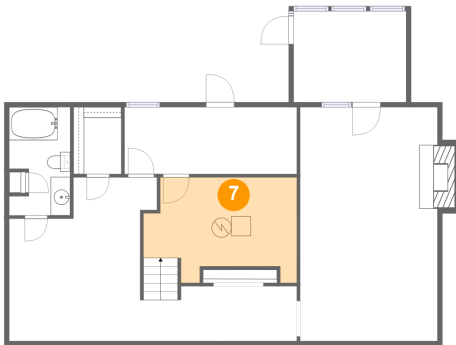
## 6 Floor 1 - Exercise Room



Dimensions: 13'3" x 16'8"  
Area: 200 sq. ft  
Counted as Living Area:  
Yes

Heated: Yes  
Finished: Yes  
Enclosed: Yes  
Contiguous:  
Yes  
Permitted: Yes  
Wet Space: No  
Addition: No  
Conversion: No

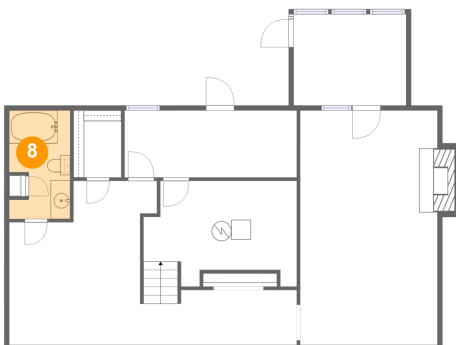
## 7 Floor 1 - Electrical Room



Dimensions: 15'7" x 10'9"  
Area: 137 sq. ft  
Counted as Living Area: No

Heated: No  
Finished: No  
Enclosed: Yes  
Contiguous: Yes  
Permitted: Yes  
Wet Space: No  
Addition: No  
Conversion: No

## 8 Floor 1 - Bath



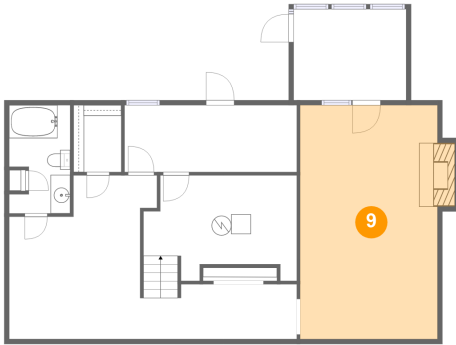
Dimensions: 6'2" x 11'0"  
Area: 63 sq. ft  
Counted as Living Area:  
Yes

Heated: Yes  
Finished: Yes  
Enclosed: Yes  
Contiguous:  
Yes  
Permitted: Yes  
Wet Space: Yes  
Addition: No  
Conversion: No



# 5141 Canter Drive, Nichols Estates, Cave Spring, Roanoke, Roanoke County, Virginia, United

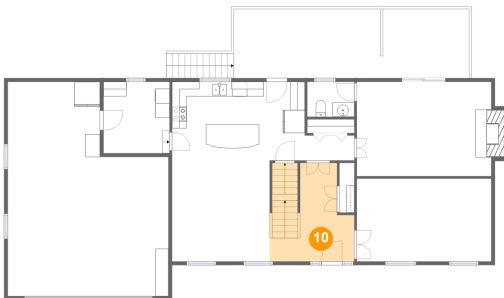
## 9 Floor 1 - Recreation Room



Dimensions: 14'0" x 23'9"  
Area: 343 sq. ft  
Counted as Living Area:  
Yes

Heated: Yes  
Finished: Yes  
Enclosed: Yes  
Contiguous:  
Yes  
Permitted: Yes  
Wet Space: No  
Addition: No  
Conversion: No

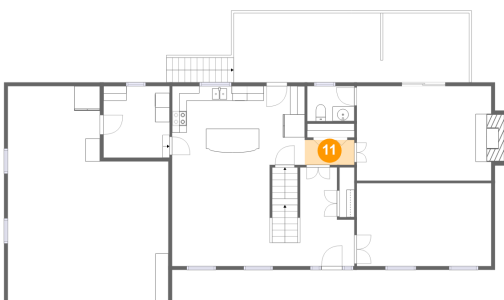
## 10 Floor 2 - Foyer



Dimensions: 11'7" x 13'5"  
Area: 134 sq. ft  
Counted as Living Area:  
Yes

Heated: Yes  
Finished: Yes  
Enclosed: Yes  
Contiguous:  
Yes  
Permitted: Yes  
Wet Space: No  
Addition: No  
Conversion: No

## 11 Floor 2 - Hall

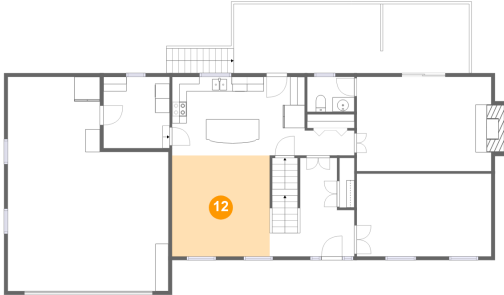


Dimensions: 6'9" x 3'5"  
Area: 23 sq. ft  
Counted as Living Area:  
Yes

Heated: Yes  
Finished: Yes  
Enclosed: Yes  
Contiguous:  
Yes  
Permitted: Yes  
Wet Space: No  
Addition: No  
Conversion: No

# 5141 Canter Drive, Nichols Estates, Cave Spring, Roanoke, Roanoke County, Virginia, United

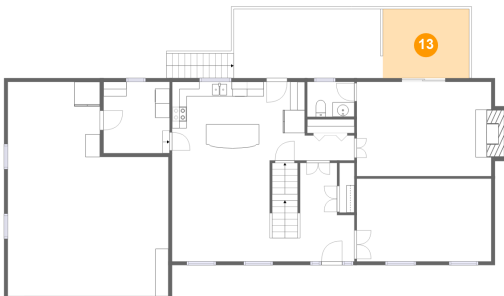
## 12 Floor 2 - Dining Area



Dimensions: 13'4" x 13'9"  
Area: 183 sq. ft  
Counted as Living Area:  
Yes

Heated: Yes  
Finished: Yes  
Enclosed: Yes  
Contiguous:  
Yes  
Permitted: Yes  
Wet Space: No  
Addition: No  
Conversion: No

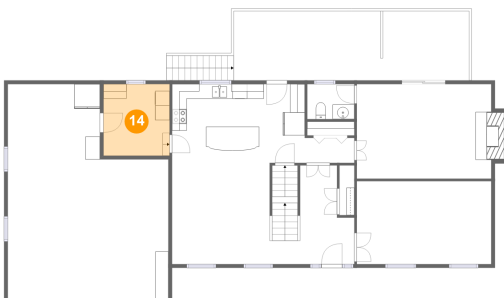
## 13 Floor 2 - Covered Deck



Dimensions: 11'9" x 9'5"  
Area: 111 sq. ft  
Counted as Living Area: No

Heated: No  
Finished: Yes  
Enclosed: No  
Contiguous: Yes  
Permitted: Yes  
Wet Space: No  
Addition: No  
Conversion: No

## 14 Floor 2 - Laundry

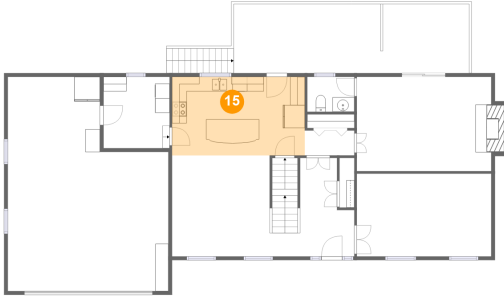


Dimensions: 9'0" x 9'9"  
Area: 88 sq. ft  
Counted as Living Area:  
Yes

Heated: Yes  
Finished: Yes  
Enclosed: Yes  
Contiguous:  
Yes  
Permitted: Yes  
Wet Space: No  
Addition: No  
Conversion: No

# 5141 Canter Drive, Nichols Estates, Cave Spring, Roanoke, Roanoke County, Virginia, United

## 15 Floor 2 - Kitchen



Dimensions: 18'1" x 10'9"  
Area: 194 sq. ft  
Counted as Living Area:  
Yes

Heated: Yes  
Finished: Yes  
Enclosed: Yes  
Contiguous:  
Yes  
Permitted: Yes  
Wet Space: No  
Addition: No  
Conversion: No

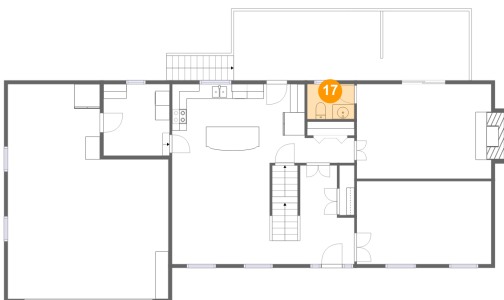
## 16 Floor 2 - Living Room



Dimensions: 18'4" x 11'3"  
Area: 207 sq. ft  
Counted as Living Area:  
Yes

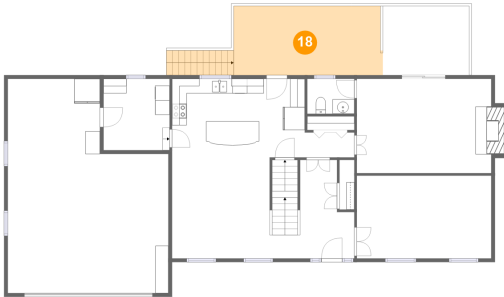
Heated: Yes  
Finished: Yes  
Enclosed: Yes  
Contiguous:  
Yes  
Permitted: Yes  
Wet Space: No  
Addition: No  
Conversion: No

## 17 Floor 2 - Wc



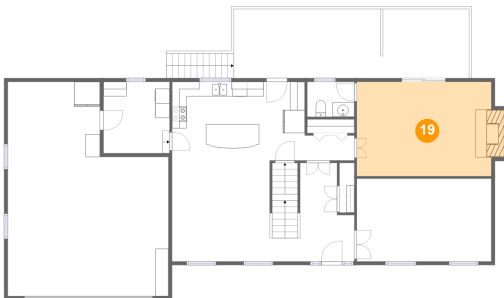
Dimensions: 6'5" x 4'9"  
Area: 31 sq. ft  
Counted as Living Area:  
Yes

Heated: Yes  
Finished: Yes  
Enclosed: Yes  
Contiguous:  
Yes  
Permitted: Yes  
Wet Space: Yes  
Addition: No  
Conversion: No

**5141 Canter Drive, Nichols Estates, Cave Spring,  
Roanoke, Roanoke County, Virginia, United****18 Floor 2 - Deck**

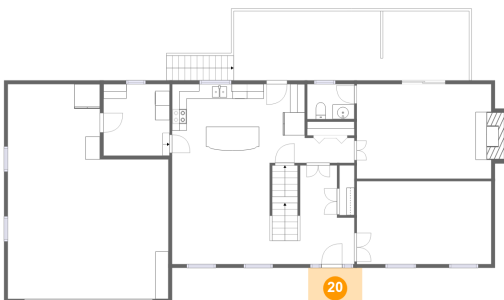
Dimensions: 20'0" x 9'5"  
Area: 221 sq. ft  
Counted as Living Area: No

Heated: No  
Finished: Yes  
Enclosed: No  
Contiguous: Yes  
Permitted: Yes  
Wet Space: No  
Addition: No  
Conversion: No

**19 Floor 2 - Family Room**

Dimensions: 18'4" x 12'10"  
Area: 247 sq. ft  
Counted as Living Area:  
Yes

Heated: Yes  
Finished: Yes  
Enclosed: Yes  
Contiguous:  
Yes  
Permitted: Yes  
Wet Space: No  
Addition: No  
Conversion: No

**20 Floor 2 - Porch**

Dimensions: 7'4" x 5'2"  
Area: 38 sq. ft  
Counted as Living Area: No

Heated: No  
Finished: Yes  
Enclosed: No  
Contiguous: Yes  
Permitted: Yes  
Wet Space: No  
Addition: No  
Conversion: No

# 5141 Canter Drive, Nichols Estates, Cave Spring, Roanoke, Roanoke County, Virginia, United

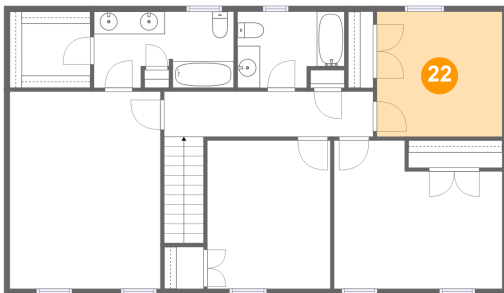
## 21 Floor 2 - Garage



Dimensions: 21'11" x 29'2"  
Area: 544 sq. ft  
Counted as Living Area: No

Heated: No  
Finished: No  
Enclosed: Yes  
Contiguous: Yes  
Permitted: Yes  
Wet Space: No  
Addition: No  
Conversion: No

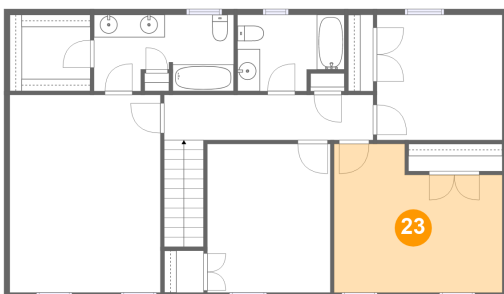
## 22 Floor 3 - Bedroom



Dimensions: 11'1" x 11'1"  
Area: 122 sq. ft  
Counted as Living Area:  
Yes

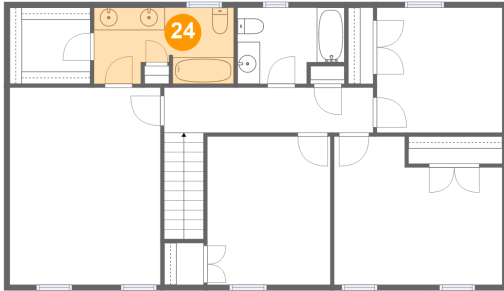
Heated: Yes  
Finished: Yes  
Enclosed: Yes  
Contiguous:  
Yes  
Permitted: Yes  
Wet Space: No  
Addition: No  
Conversion: No

## 23 Floor 3 - Bedroom



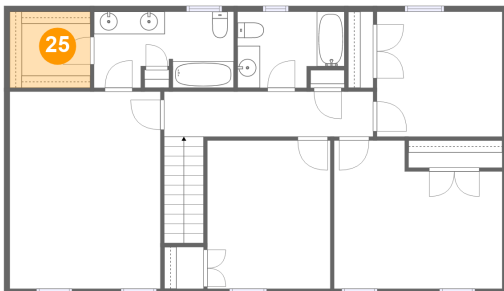
Dimensions: 14'10" x 13'1"  
Area: 171 sq. ft  
Counted as Living Area:  
Yes

Heated: Yes  
Finished: Yes  
Enclosed: Yes  
Contiguous:  
Yes  
Permitted: Yes  
Wet Space: No  
Addition: No  
Conversion: No

**5141 Canter Drive, Nichols Estates, Cave Spring,  
Roanoke, Roanoke County, Virginia, United****24 Floor 3 - Bath**

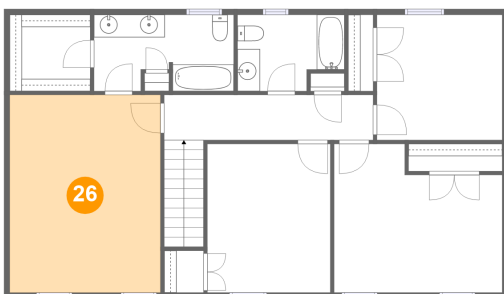
Dimensions: 12'4" x 6'9"  
Area: 78 sq. ft  
Counted as Living Area:  
Yes

Heated: Yes  
Finished: Yes  
Enclosed: Yes  
Contiguous:  
Yes  
Permitted: Yes  
Wet Space: Yes  
Addition: No  
Conversion: No

**25 Floor 3 - W.i.c.**

Dimensions: 7'1" x 6'9"  
Area: 48 sq. ft  
Counted as Living Area:  
Yes

Heated: Yes  
Finished: Yes  
Enclosed: Yes  
Contiguous:  
Yes  
Permitted: Yes  
Wet Space: No  
Addition: No  
Conversion: No

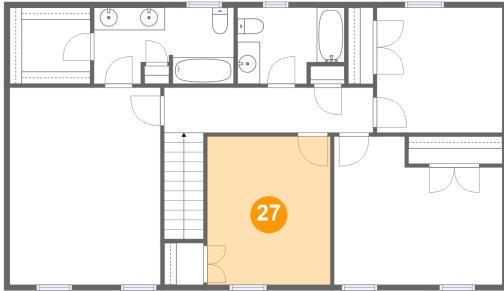
**26 Floor 3 - Primary Bedroom**

Dimensions: 13'4" x 17'5"  
Area: 232 sq. ft  
Counted as Living Area:  
Yes

Heated: Yes  
Finished: Yes  
Enclosed: Yes  
Contiguous:  
Yes  
Permitted: Yes  
Wet Space: No  
Addition: No  
Conversion: No

# 5141 Canter Drive, Nichols Estates, Cave Spring, Roanoke, Roanoke County, Virginia, United

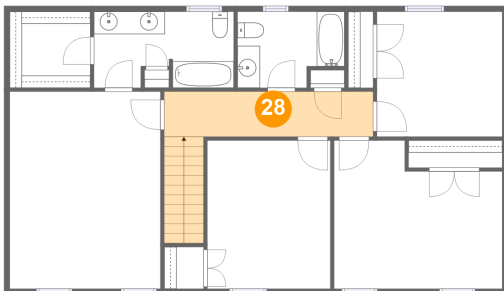
## 27 Floor 3 - Bedroom



Dimensions: 10'11" x 13'1"  
Area: 142 sq. ft  
Counted as Living Area:  
Yes

Heated: Yes  
Finished: Yes  
Enclosed: Yes  
Contiguous:  
Yes  
Permitted: Yes  
Wet Space: No  
Addition: No  
Conversion: No

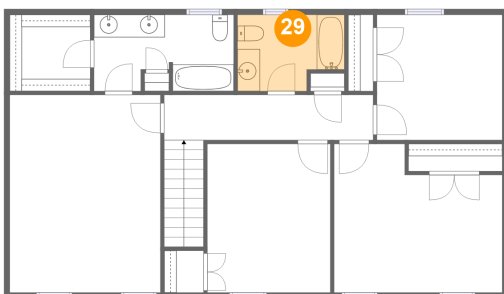
## 28 Floor 3 - Hall



Dimensions: 18'6" x 3'10"  
Area: 106 sq. ft  
Counted as Living Area:  
Yes

Heated: Yes  
Finished: Yes  
Enclosed: Yes  
Contiguous:  
Yes  
Permitted: Yes  
Wet Space: No  
Addition: No  
Conversion: No

## 29 Floor 3 - Bath



Dimensions: 9'5" x 6'9"  
Area: 57 sq. ft  
Counted as Living Area:  
Yes

Heated: Yes  
Finished: Yes  
Enclosed: Yes  
Contiguous:  
Yes  
Permitted: Yes  
Wet Space: Yes  
Addition: No  
Conversion: No