

# 6571 Fairway Estates Drive, Fairway Forest, Roanoke, Roanoke County, Virginia, United

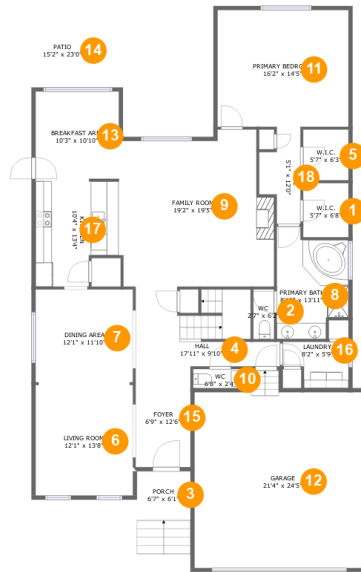


## Property Summary

 **1** garages     **3** bedrooms     **2** bathrooms     **1** half baths

 **2** floors     **2,501** Gross Living Area sqft     **3,682** total sqft

# 6571 Fairway Estates Drive, Fairway Forest, Roanoke, Roanoke County, Virginia, United



## Room Dimensions

Floor 1

Total sqft: 2579

Living area: 1835

#	Room name	Dimensions	Area (sqft)	Counted as Living Area
1	W.i.c.	5'7" x 6'8"	38 sq. ft	Yes
2	Wc	2'7" x 6'2"	16 sq. ft	Yes
3	Porch	6'7" x 6'1"	40 sq. ft	No
4	Hall	17'11" x 9'10"	136 sq. ft	Yes
5	W.i.c.	5'7" x 6'3"	35 sq. ft	Yes
6	Living Room	12'1" x 13'8"	165 sq. ft	Yes
7	Dining Area	12'1" x 11'10"	142 sq. ft	Yes
8	Primary Bath	8'10" x 13'11"	106 sq. ft	Yes
9	Family Room	19'2" x 19'5"	336 sq. ft	Yes
10	Wc	6'8" x 2'4"	16 sq. ft	Yes
11	Primary Bedroom	16'2" x 14'5"	234 sq. ft	Yes

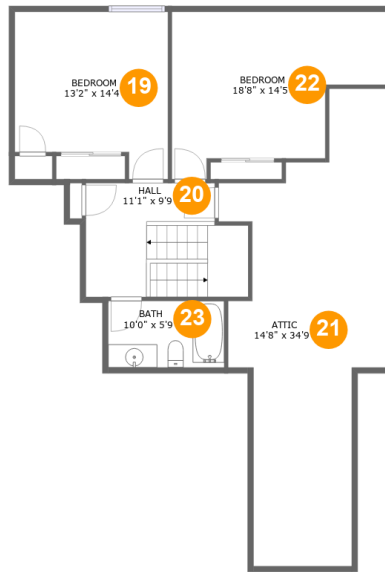
Scan captured on Thu, 22 Aug 2024 19:40:19 GMT

Information is calculated by CubiCasa technology; deemed highly reliable but not guaranteed.

**6571 Fairway Estates Drive, Fairway Forest,  
Roanoke, Roanoke County, Virginia, United**

#	Room name	Dimensions	Area (sqft)	Counted as Living Area
12	Garage	21'4" x 24'5"	474 sq. ft	No
13	Breakfast Area	10'3" x 10'10"	111 sq. ft	Yes
14	Patio	15'2" x 23'0"	201 sq. ft	No
15	Foyer	6'9" x 12'6"	85 sq. ft	Yes
16	Laundry	8'2" x 5'9"	39 sq. ft	Yes
17	Kitchen	10'4" x 13'4"	123 sq. ft	Yes
18	Hall	5'1" x 12'0"	47 sq. ft	Yes

# 6571 Fairway Estates Drive, Fairway Forest, Roanoke, Roanoke County, Virginia, United



## Room Dimensions

**Floor 2****Total sqft: 1103****Living area: 666**

#	Room name	Dimensions	Area (sqft)	Counted as Living Area
19	Bedroom	13'2" x 14'4"	167 sq. ft	Yes
20	Hall	11'1" x 9'9"	126 sq. ft	Yes
21	Attic	14'8" x 34'9"	203 sq. ft	No
22	Bedroom	18'8" x 14'5"	206 sq. ft	Yes
23	Bath	10'0" x 5'9"	57 sq. ft	Yes

# 6571 Fairway Estates Drive, Fairway Forest, Roanoke, Roanoke County, Virginia, United

## 1 Floor 1 - W.i.c.



**Dimensions:** 5'7" x 6'8"  
**Area:** 38 sq. ft  
**Counted as Living Area:**  
Yes

**Heated:** Yes  
**Finished:** Yes  
**Enclosed:** Yes  
**Contiguous:**  
Yes  
**Permitted:** Yes  
**Wet Space:** No  
**Addition:** No  
**Conversion:** No

## 2 Floor 1 - Wc



**Dimensions:** 2'7" x 6'2"  
**Area:** 16 sq. ft  
**Counted as Living Area:**  
Yes

**Heated:** Yes  
**Finished:** Yes  
**Enclosed:** Yes  
**Contiguous:**  
Yes  
**Permitted:** Yes  
**Wet Space:** Yes  
**Addition:** No  
**Conversion:** No

# 6571 Fairway Estates Drive, Fairway Forest, Roanoke, Roanoke County, Virginia, United

## 3 Floor 1 - Porch



Dimensions: 6'7" x 6'1"  
Area: 40 sq. ft  
Counted as Living Area: No

Heated: No  
Finished: Yes  
Enclosed: No  
Contiguous: Yes  
Permitted: Yes  
Wet Space: No  
Addition: No  
Conversion: No

## 4 Floor 1 - Hall



Dimensions: 17'11" x 9'10"  
Area: 136 sq. ft  
Counted as Living Area:  
Yes

Heated: Yes  
Finished: Yes  
Enclosed: Yes  
Contiguous:  
Yes  
Permitted: Yes  
Wet Space: No  
Addition: No  
Conversion: No

## 5 Floor 1 - W.i.c.



Dimensions: 5'7" x 6'3"  
Area: 35 sq. ft  
Counted as Living Area:  
Yes

Heated: Yes  
Finished: Yes  
Enclosed: Yes  
Contiguous:  
Yes  
Permitted: Yes  
Wet Space: No  
Addition: No  
Conversion: No

# 6571 Fairway Estates Drive, Fairway Forest, Roanoke, Roanoke County, Virginia, United

## 6 Floor 1 - Living Room



Dimensions: 12'1" x 13'8"  
Area: 165 sq. ft  
Counted as Living Area:  
Yes

Heated: Yes  
Finished: Yes  
Enclosed: Yes  
Contiguous:  
Yes  
Permitted: Yes  
Wet Space: No  
Addition: No  
Conversion: No

## 7 Floor 1 - Dining Area



Dimensions: 12'1" x 11'10"  
Area: 142 sq. ft  
Counted as Living Area:  
Yes

Heated: Yes  
Finished: Yes  
Enclosed: Yes  
Contiguous:  
Yes  
Permitted: Yes  
Wet Space: No  
Addition: No  
Conversion: No

## 8 Floor 1 - Primary Bath

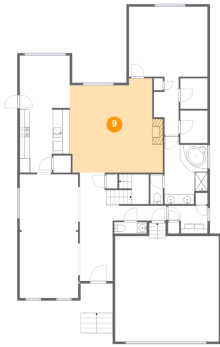


Dimensions: 8'10" x 13'11"  
Area: 106 sq. ft  
Counted as Living Area:  
Yes

Heated: Yes  
Finished: Yes  
Enclosed: Yes  
Contiguous:  
Yes  
Permitted: Yes  
Wet Space: Yes  
Addition: No  
Conversion: No

# 6571 Fairway Estates Drive, Fairway Forest, Roanoke, Roanoke County, Virginia, United

## 9 Floor 1 - Family Room



Dimensions: 19'2" x 19'5"  
Area: 336 sq. ft  
Counted as Living Area:  
Yes

Heated: Yes  
Finished: Yes  
Enclosed: Yes  
Contiguous:  
Yes  
Permitted: Yes  
Wet Space: No  
Addition: No  
Conversion: No

## 10 Floor 1 - Wc



Dimensions: 6'8" x 2'4"  
Area: 16 sq. ft  
Counted as Living Area:  
Yes

Heated: Yes  
Finished: Yes  
Enclosed: Yes  
Contiguous:  
Yes  
Permitted: Yes  
Wet Space: Yes  
Addition: No  
Conversion: No

## 11 Floor 1 - Primary Bedroom



Dimensions: 16'2" x 14'5"  
Area: 234 sq. ft  
Counted as Living Area:  
Yes

Heated: Yes  
Finished: Yes  
Enclosed: Yes  
Contiguous:  
Yes  
Permitted: Yes  
Wet Space: No  
Addition: No  
Conversion: No



# 6571 Fairway Estates Drive, Fairway Forest, Roanoke, Roanoke County, Virginia, United

## 12 Floor 1 - Garage



Dimensions: 21'4" x 24'5"  
Area: 474 sq. ft  
Counted as Living Area: No

Heated: No  
Finished: No  
Enclosed: Yes  
Contiguous: Yes  
Permitted: Yes  
Wet Space: No  
Addition: No  
Conversion: No

## 13 Floor 1 - Breakfast Area



Dimensions: 10'3" x 10'10"  
Area: 111 sq. ft  
Counted as Living Area:  
Yes

Heated: Yes  
Finished: Yes  
Enclosed: Yes  
Contiguous:  
Yes  
Permitted: Yes  
Wet Space: No  
Addition: No  
Conversion: No

## 14 Floor 1 - Patio



Dimensions: 15'2" x 23'0"  
Area: 201 sq. ft  
Counted as Living Area: No

Heated: No  
Finished: Yes  
Enclosed: No  
Contiguous: Yes  
Permitted: Yes  
Wet Space: No  
Addition: No  
Conversion: No

# 6571 Fairway Estates Drive, Fairway Forest, Roanoke, Roanoke County, Virginia, United

## 15 Floor 1 - Foyer



Dimensions: 6'9" x 12'6"  
Area: 85 sq. ft  
Counted as Living Area:  
Yes

Heated: Yes  
Finished: Yes  
Enclosed: Yes  
Contiguous:  
Yes  
Permitted: Yes  
Wet Space: No  
Addition: No  
Conversion: No

## 16 Floor 1 - Laundry



Dimensions: 8'2" x 5'9"  
Area: 39 sq. ft  
Counted as Living Area:  
Yes

Heated: Yes  
Finished: Yes  
Enclosed: Yes  
Contiguous:  
Yes  
Permitted: Yes  
Wet Space: No  
Addition: No  
Conversion: No

## 17 Floor 1 - Kitchen



Dimensions: 10'4" x 13'4"  
Area: 123 sq. ft  
Counted as Living Area:  
Yes

Heated: Yes  
Finished: Yes  
Enclosed: Yes  
Contiguous:  
Yes  
Permitted: Yes  
Wet Space: No  
Addition: No  
Conversion: No

# 6571 Fairway Estates Drive, Fairway Forest, Roanoke, Roanoke County, Virginia, United

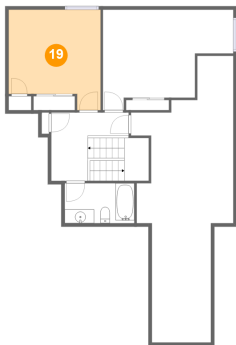
## 18 Floor 1 - Hall



Dimensions: 5'1" x 12'0"  
Area: 47 sq. ft  
Counted as Living Area:  
Yes

Heated: Yes  
Finished: Yes  
Enclosed: Yes  
Contiguous:  
Yes  
Permitted: Yes  
Wet Space: No  
Addition: No  
Conversion: No

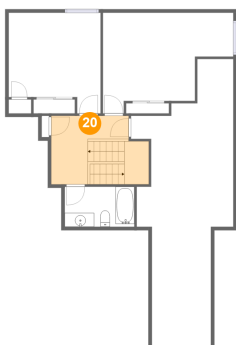
## 19 Floor 2 - Bedroom



Dimensions: 13'2" x 14'4"  
Area: 167 sq. ft  
Counted as Living Area:  
Yes

Heated: Yes  
Finished: Yes  
Enclosed: Yes  
Contiguous:  
Yes  
Permitted: Yes  
Wet Space: No  
Addition: No  
Conversion: No

## 20 Floor 2 - Hall

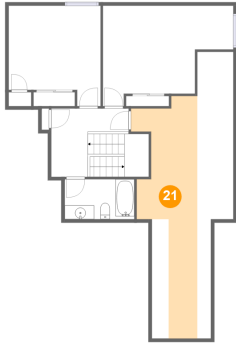


Dimensions: 11'1" x 9'9"  
Area: 126 sq. ft  
Counted as Living Area:  
Yes

Heated: Yes  
Finished: Yes  
Enclosed: Yes  
Contiguous:  
Yes  
Permitted: Yes  
Wet Space: No  
Addition: No  
Conversion: No

# 6571 Fairway Estates Drive, Fairway Forest, Roanoke, Roanoke County, Virginia, United

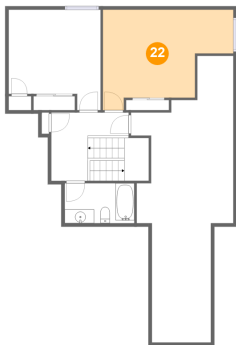
## 21 Floor 2 - Attic



Dimensions: 14'8" x 34'9"  
Area: 203 sq. ft  
Counted as Living Area: No

Heated: No  
Finished: No  
Enclosed: Yes  
Contiguous: Yes  
Permitted: Yes  
Wet Space: No  
Addition: No  
Conversion: No

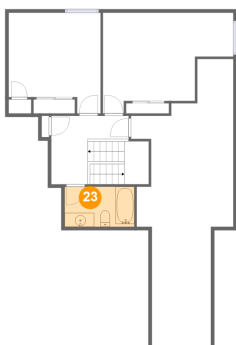
## 22 Floor 2 - Bedroom



Dimensions: 18'8" x 14'5"  
Area: 206 sq. ft  
Counted as Living Area: Yes

Heated: Yes  
Finished: Yes  
Enclosed: Yes  
Contiguous: Yes  
Permitted: Yes  
Wet Space: No  
Addition: No  
Conversion: No

## 23 Floor 2 - Bath



Dimensions: 10'0" x 5'9"  
Area: 57 sq. ft  
Counted as Living Area: Yes

Heated: Yes  
Finished: Yes  
Enclosed: Yes  
Contiguous: Yes  
Permitted: Yes  
Wet Space: Yes  
Addition: No  
Conversion: No