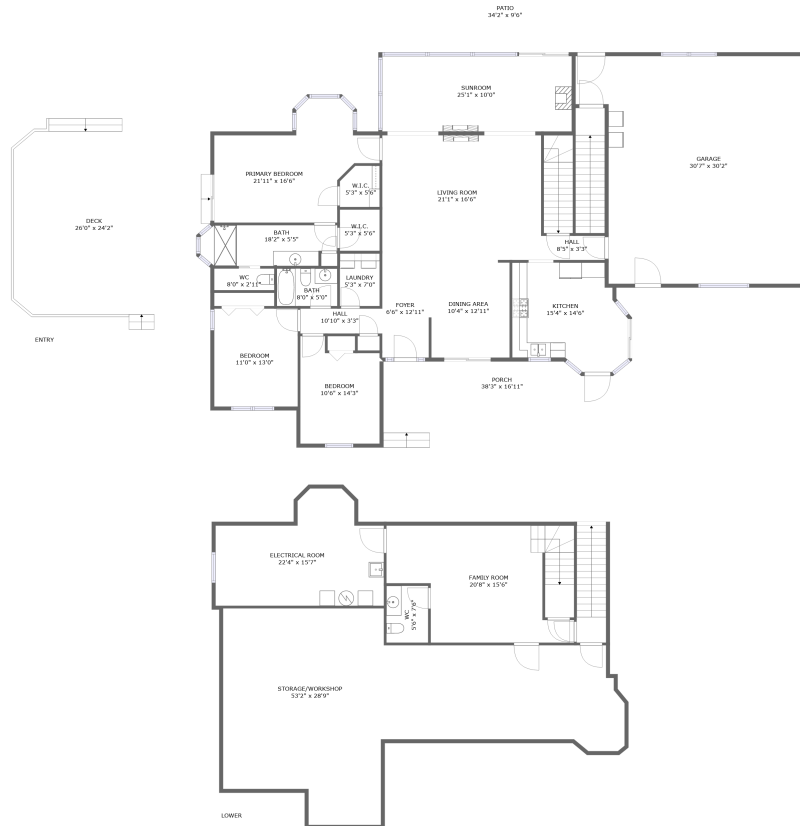






635 Miriam Hill Drive, Rocky Mount, Franklin County, Virginia, United States, 24151

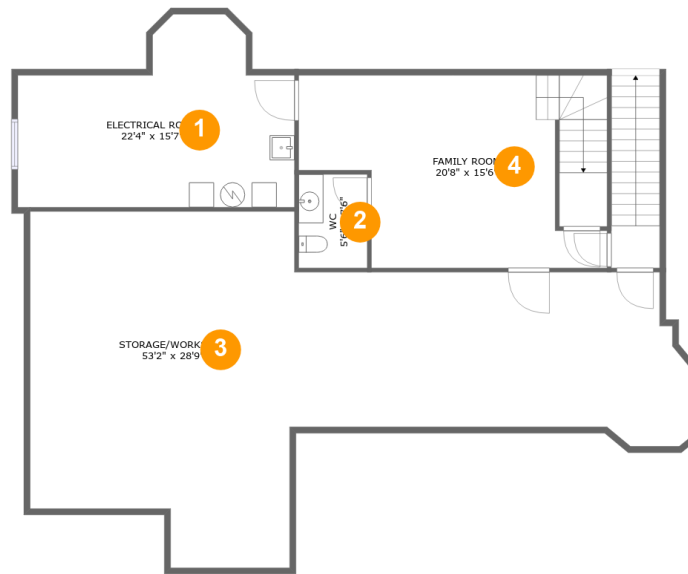


Property Summary

 **1** garages  **3** bedrooms  **2** bathrooms  **1** half baths

 **2** floors  **3,609** Gross Living Area sqft  **6,008** total sqft

635 Miriam Hill Drive, Rocky Mount, Franklin County, Virginia, United States, 24151



Room Dimensions

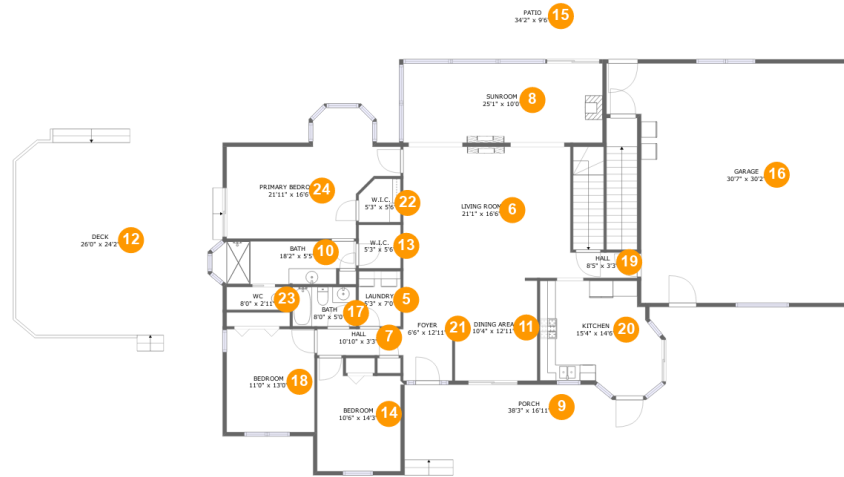
Floor 1

Total sqft: 1790

Living area: 1498

| # | Room name | Dimensions | Area (sqft) | Counted as Living Area |
|---|----------------------|---------------|-------------|------------------------|
| 1 | Electrical Room | 22'4" x 15'7" | 271 sq. ft | No |
| 2 | Wc | 5'6" x 7'6" | 42 sq. ft | Yes |
| 3 | STORAGE/ WORKSHOP | 53'2" x 28'9" | 946 sq. ft | Yes |
| 4 | Family Room | 20'8" x 15'6" | 335 sq. ft | Yes |

635 Miriam Hill Drive, Rocky Mount, Franklin County, Virginia, United States, 24151



Room Dimensions

Floor 2

Total sqft: 4218

Living area: 2111

| # | Room name | Dimensions | Area (sqft) | Counted as Living Area |
|----|-------------|----------------|-------------|------------------------|
| 5 | Laundry | 5'3" x 7'0" | 37 sq. ft | Yes |
| 6 | Living Room | 21'1" x 16'6" | 348 sq. ft | Yes |
| 7 | Hall | 10'10" x 3'3" | 36 sq. ft | Yes |
| 8 | Sunroom | 25'1" x 10'0" | 251 sq. ft | Yes |
| 9 | Porch | 38'3" x 16'11" | 333 sq. ft | No |
| 10 | Bath | 18'2" x 5'5" | 91 sq. ft | Yes |
| 11 | Dining Area | 10'4" x 12'11" | 134 sq. ft | Yes |
| 12 | Deck | 26'0" x 24'2" | 535 sq. ft | No |
| 13 | W.i.c. | 5'3" x 5'6" | 29 sq. ft | Yes |
| 14 | Bedroom | 10'6" x 14'3" | 134 sq. ft | Yes |
| 15 | Patio | 34'2" x 9'6" | 303 sq. ft | No |

Scan captured on Fri, 30 Aug 2024 20:05:52 GMT

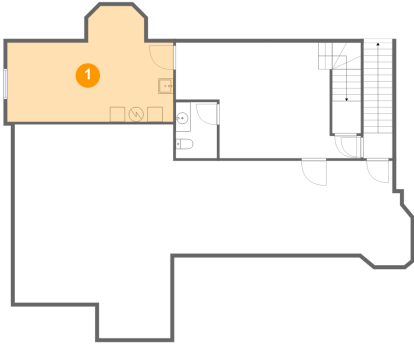
Information is calculated by CubiCasa technology; deemed highly reliable but not guaranteed.

**635 Miriam Hill Drive, Rocky Mount, Franklin
County, Virginia, United States, 24151**

| # | Room name | Dimensions | Area (sqft) | Counted as Living Area |
|----|-----------------|----------------|-------------|------------------------|
| 16 | Garage | 30'7" x 30'2" | 818 sq. ft | No |
| 17 | Bath | 8'0" x 5'0" | 40 sq. ft | Yes |
| 18 | Bedroom | 11'0" x 13'0" | 144 sq. ft | Yes |
| 19 | Hall | 8'5" x 3'3" | 27 sq. ft | Yes |
| 20 | Kitchen | 15'4" x 14'6" | 189 sq. ft | Yes |
| 21 | Foyer | 6'6" x 12'11" | 82 sq. ft | Yes |
| 22 | W.i.c. | 5'3" x 5'6" | 27 sq. ft | Yes |
| 23 | Wc | 8'0" x 2'11" | 23 sq. ft | Yes |
| 24 | Primary Bedroom | 21'11" x 16'6" | 246 sq. ft | Yes |

635 Miriam Hill Drive, Rocky Mount, Franklin County, Virginia, United States, 24151

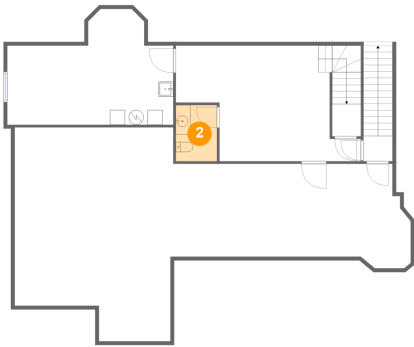
1 Floor 1 - Electrical Room



Dimensions: 22'4" x 15'7"
Area: 271 sq. ft
Counted as Living Area: No

Heated: No
Finished: No
Enclosed: Yes
Contiguous: Yes
Permitted: Yes
Wet Space: No
Addition: No
Conversion: No

2 Floor 1 - Wc

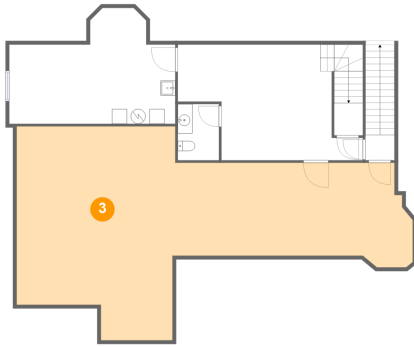


Dimensions: 5'6" x 7'6"
Area: 42 sq. ft
Counted as Living Area: Yes

Heated: Yes
Finished: Yes
Enclosed: Yes
Contiguous: Yes
Permitted: Yes
Wet Space: Yes
Addition: No
Conversion: No

635 Miriam Hill Drive, Rocky Mount, Franklin County, Virginia, United States, 24151

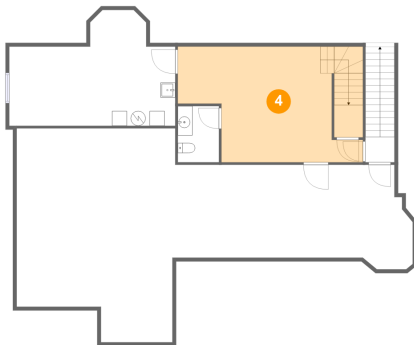
3 Floor 1 - STORAGE/WORKSHOP



Dimensions: 53'2" x 28'9"
Area: 946 sq. ft
Counted as Living Area:
Yes

Heated: Yes
Finished: Yes
Enclosed: Yes
Contiguous:
Yes
Permitted: Yes
Wet Space: No
Addition: No
Conversion: No

4 Floor 1 - Family Room



Dimensions: 20'8" x 15'6"
Area: 335 sq. ft
Counted as Living Area:
Yes

Heated: Yes
Finished: Yes
Enclosed: Yes
Contiguous:
Yes
Permitted: Yes
Wet Space: No
Addition: No
Conversion: No

5 Floor 2 - Laundry

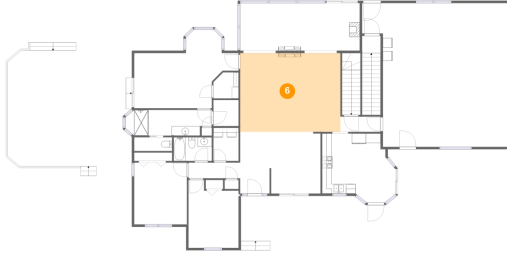


Dimensions: 5'3" x 7'0"
Area: 37 sq. ft
Counted as Living Area:
Yes

Heated: Yes
Finished: Yes
Enclosed: Yes
Contiguous:
Yes
Permitted: Yes
Wet Space: No
Addition: No
Conversion: No

635 Miriam Hill Drive, Rocky Mount, Franklin County, Virginia, United States, 24151

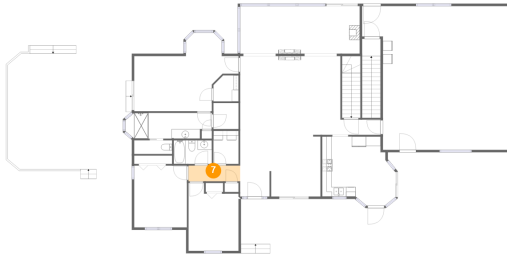
6 Floor 2 - Living Room



Dimensions: 21'1" x 16'6"
Area: 348 sq. ft
Counted as Living Area:
Yes

Heated: Yes
Finished: Yes
Enclosed: Yes
Contiguous:
Yes
Permitted: Yes
Wet Space: No
Addition: No
Conversion: No

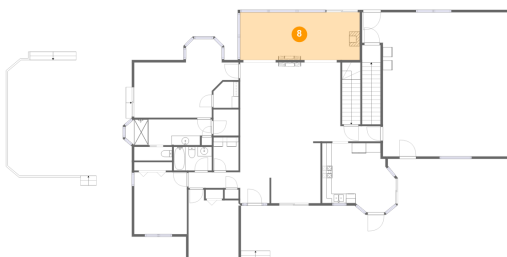
7 Floor 2 - Hall



Dimensions: 10'10" x 3'3"
Area: 36 sq. ft
Counted as Living Area:
Yes

Heated: Yes
Finished: Yes
Enclosed: Yes
Contiguous:
Yes
Permitted: Yes
Wet Space: No
Addition: No
Conversion: No

8 Floor 2 - Sunroom

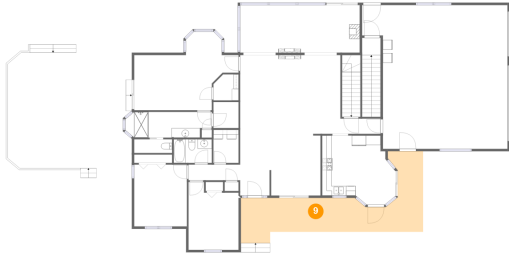


Dimensions: 25'1" x 10'0"
Area: 251 sq. ft
Counted as Living Area:
Yes

Heated: Yes
Finished: Yes
Enclosed: Yes
Contiguous:
Yes
Permitted: Yes
Wet Space: No
Addition: No
Conversion: No

635 Miriam Hill Drive, Rocky Mount, Franklin County, Virginia, United States, 24151

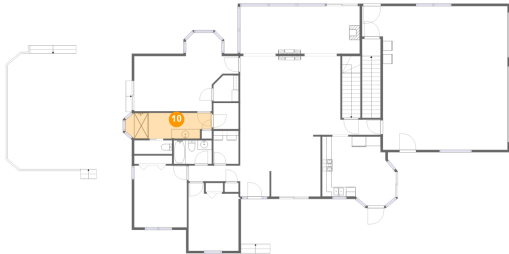
9 Floor 2 - Porch



Dimensions: 38'3" x 16'11"
Area: 333 sq. ft
Counted as Living Area: No

Heated: No
Finished: Yes
Enclosed: No
Contiguous: Yes
Permitted: Yes
Wet Space: No
Addition: No
Conversion: No

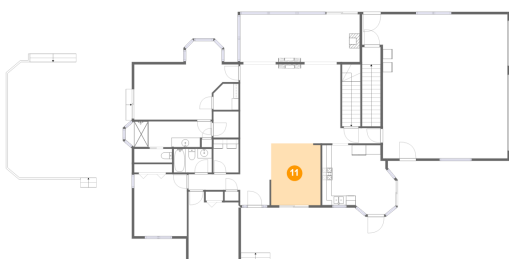
10 Floor 2 - Bath



Dimensions: 18'2" x 5'5"
Area: 91 sq. ft
Counted as Living Area: Yes

Heated: Yes
Finished: Yes
Enclosed: Yes
Contiguous: Yes
Permitted: Yes
Wet Space: Yes
Addition: No
Conversion: No

11 Floor 2 - Dining Area

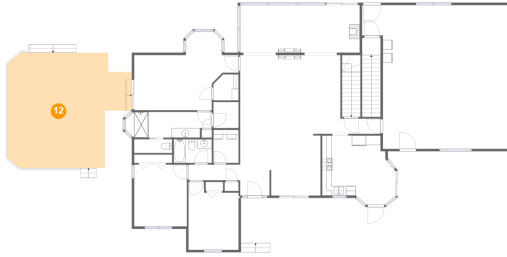


Dimensions: 10'4" x 12'11"
Area: 134 sq. ft
Counted as Living Area: Yes

Heated: Yes
Finished: Yes
Enclosed: Yes
Contiguous: Yes
Permitted: Yes
Wet Space: No
Addition: No
Conversion: No

635 Miriam Hill Drive, Rocky Mount, Franklin County, Virginia, United States, 24151

12 Floor 2 - Deck



Dimensions: 26'0" x 24'2"
Area: 535 sq. ft
Counted as Living Area: No

Heated: No
Finished: Yes
Enclosed: No
Contiguous: Yes
Permitted: Yes
Wet Space: No
Addition: No
Conversion: No

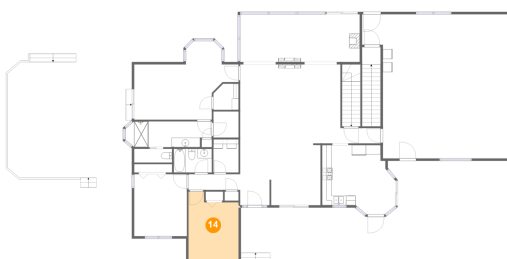
13 Floor 2 - W.i.c.



Dimensions: 5'3" x 5'6"
Area: 29 sq. ft
Counted as Living Area: Yes

Heated: Yes
Finished: Yes
Enclosed: Yes
Contiguous: Yes
Permitted: Yes
Wet Space: No
Addition: No
Conversion: No

14 Floor 2 - Bedroom



Dimensions: 10'6" x 14'3"
Area: 134 sq. ft
Counted as Living Area: Yes

Heated: Yes
Finished: Yes
Enclosed: Yes
Contiguous: Yes
Permitted: Yes
Wet Space: No
Addition: No
Conversion: No

635 Miriam Hill Drive, Rocky Mount, Franklin County, Virginia, United States, 24151

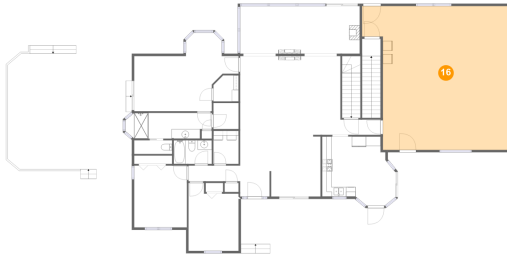
15 Floor 2 - Patio



Dimensions: 34'2" x 9'6"
Area: 303 sq. ft
Counted as Living Area: No

Heated: No
Finished: Yes
Enclosed: No
Contiguous: Yes
Permitted: Yes
Wet Space: No
Addition: No
Conversion: No

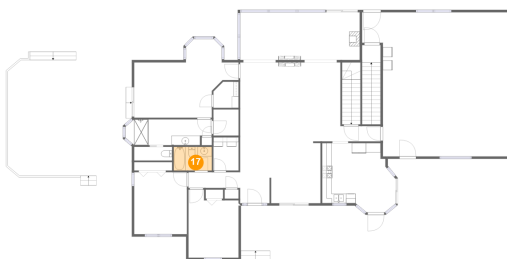
16 Floor 2 - Garage



Dimensions: 30'7" x 30'2"
Area: 818 sq. ft
Counted as Living Area: No

Heated: No
Finished: No
Enclosed: Yes
Contiguous: Yes
Permitted: Yes
Wet Space: No
Addition: No
Conversion: No

17 Floor 2 - Bath

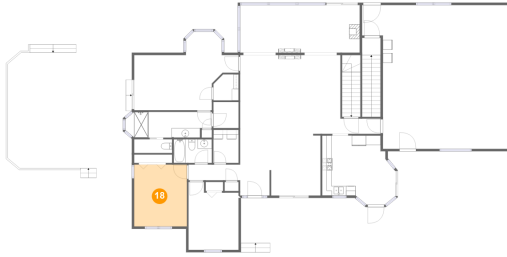


Dimensions: 8'0" x 5'0"
Area: 40 sq. ft
Counted as Living Area: Yes

Heated: Yes
Finished: Yes
Enclosed: Yes
Contiguous: Yes
Permitted: Yes
Wet Space: Yes
Addition: No
Conversion: No

635 Miriam Hill Drive, Rocky Mount, Franklin County, Virginia, United States, 24151

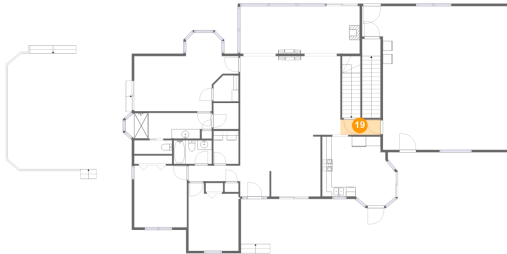
18 Floor 2 - Bedroom



Dimensions: 11'0" x 13'0"
Area: 144 sq. ft
Counted as Living Area:
Yes

Heated: Yes
Finished: Yes
Enclosed: Yes
Contiguous:
Yes
Permitted: Yes
Wet Space: No
Addition: No
Conversion: No

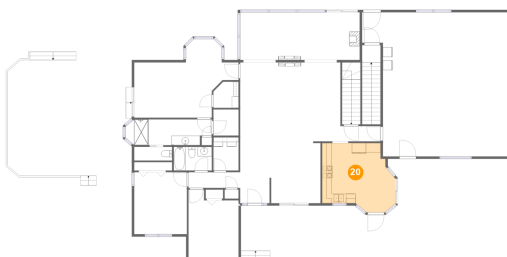
19 Floor 2 - Hall



Dimensions: 8'5" x 3'3"
Area: 27 sq. ft
Counted as Living Area:
Yes

Heated: Yes
Finished: Yes
Enclosed: Yes
Contiguous:
Yes
Permitted: Yes
Wet Space: No
Addition: No
Conversion: No

20 Floor 2 - Kitchen

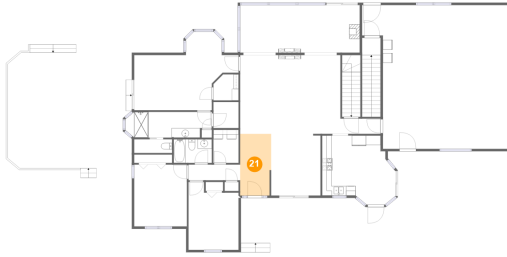


Dimensions: 15'4" x 14'6"
Area: 189 sq. ft
Counted as Living Area:
Yes

Heated: Yes
Finished: Yes
Enclosed: Yes
Contiguous:
Yes
Permitted: Yes
Wet Space: No
Addition: No
Conversion: No

635 Miriam Hill Drive, Rocky Mount, Franklin County, Virginia, United States, 24151

21 Floor 2 - Foyer



Dimensions: 6'6" x 12'11"
Area: 82 sq. ft
Counted as Living Area:
Yes

Heated: Yes
Finished: Yes
Enclosed: Yes
Contiguous:
Yes
Permitted: Yes
Wet Space: No
Addition: No
Conversion: No

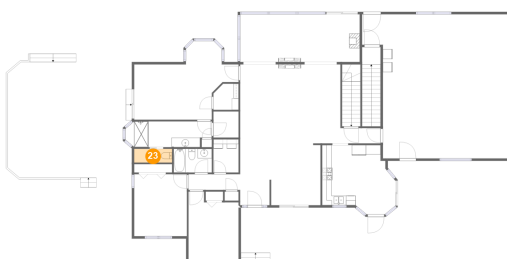
22 Floor 2 - W.i.c.



Dimensions: 5'3" x 5'6"
Area: 27 sq. ft
Counted as Living Area:
Yes

Heated: Yes
Finished: Yes
Enclosed: Yes
Contiguous:
Yes
Permitted: Yes
Wet Space: No
Addition: No
Conversion: No

23 Floor 2 - Wc



Dimensions: 8'0" x 2'11"
Area: 23 sq. ft
Counted as Living Area:
Yes

Heated: Yes
Finished: Yes
Enclosed: Yes
Contiguous:
Yes
Permitted: Yes
Wet Space: Yes
Addition: No
Conversion: No

635 Miriam Hill Drive, Rocky Mount, Franklin County, Virginia, United States, 24151

24 Floor 2 - Primary Bedroom



Dimensions: 21'11" x 16'6"
Area: 246 sq. ft
Counted as Living Area:
Yes

Heated: Yes
Finished: Yes
Enclosed: Yes
Contiguous:
Yes
Permitted: Yes
Wet Space: No
Addition: No
Conversion: No