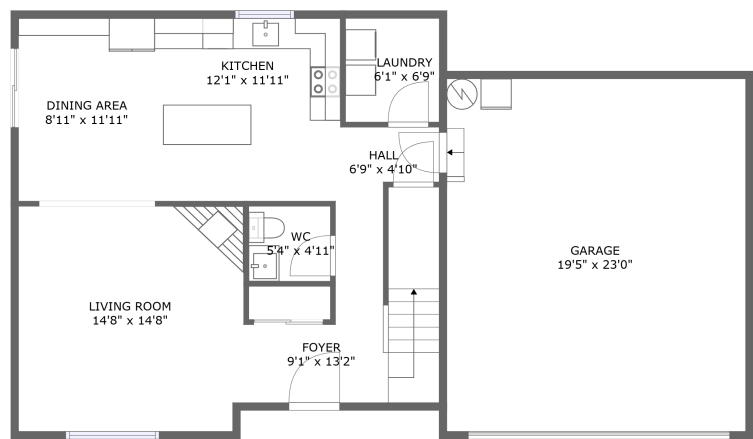
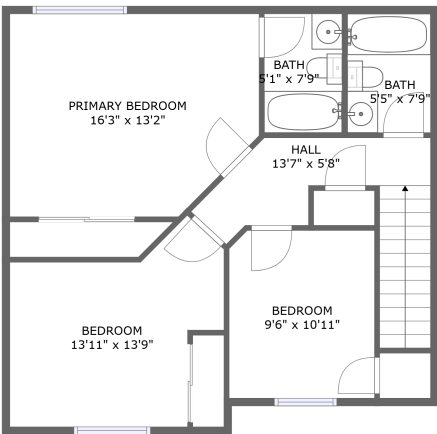


Home report

3012 Ash Street, Forest Grove, Washington County, Oregon,
United States, 97116





FLOOR 1





FLOOR 2


Property summary


 **1** Garages


 **3** Bedrooms

 **2** Bathrooms

 **1** Half baths

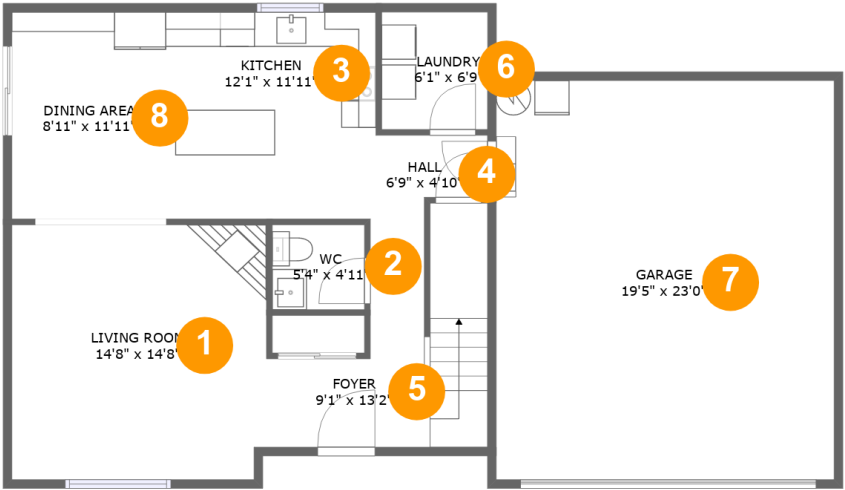
 **2** Floors

 **1,534** Gross living area sqft

 **2,013** Total sqft

Home report

3012 Ash Street, Forest Grove, Washington County, Oregon,
United States, 97116

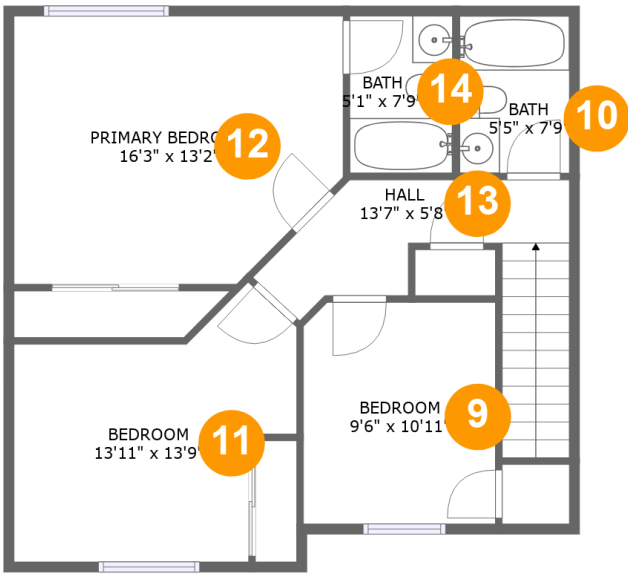


Room dimensions

Floor 1 Total sqft: 1246 Living area: 767

#		Dimensions	sqft	Counted as living area
1	Living Room	14'8" x 14'8"	214 sq. ft	Yes
2	WC	5'4" x 4'11"	26 sq. ft	Yes
3	Kitchen	12'1" x 11'11"	142 sq. ft	Yes
4	Hall	6'9" x 4'10"	28 sq. ft	Yes
5	Foyer	9'1" x 13'2"	120 sq. ft	Yes
6	Laundry	6'1" x 6'9"	41 sq. ft	Yes
7	Garage	19'5" x 23'0"	447 sq. ft	No
8	Dining Area	8'11" x 11'11"	106 sq. ft	Yes

3012 Ash Street, Forest Grove, Washington County, Oregon,
United States, 97116



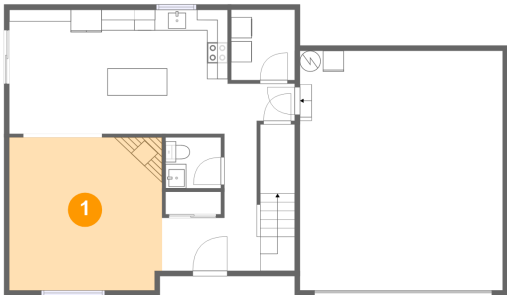
Room dimensions

Floor 2 Total sqft: 767 Living area: 767

#		Dimensions	sqft	Counted as living area
9	Bedroom	9'6" x 10'11"	103 sq. ft	Yes
10	Bath	5'5" x 7'9"	42 sq. ft	Yes
11	Bedroom	13'11" x 13'9"	144 sq. ft	Yes
12	Primary Bedroom	16'3" x 13'2"	201 sq. ft	Yes
13	Hall	13'7" x 5'8"	93 sq. ft	Yes
14	Bath	5'1" x 7'9"	39 sq. ft	Yes

3012 Ash Street, Forest Grove, Washington County, Oregon,
United States, 97116

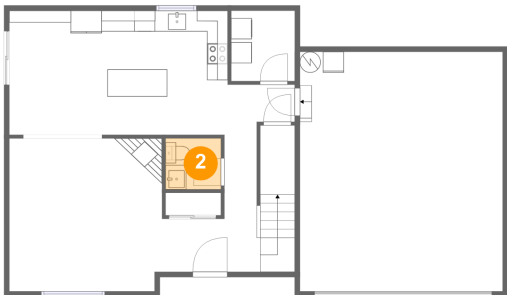
1 Floor 1 - Living Room



Dimensions: 14'8" x 14'8"
Area: 214 sq. ft
Counted as living area: Yes

Heated: Yes
Finished: Yes
Enclosed: Yes
Contiguous: Yes
Permitted: Yes
Wet space: No
Addition: No
Conversion: No

2 Floor 1 - WC



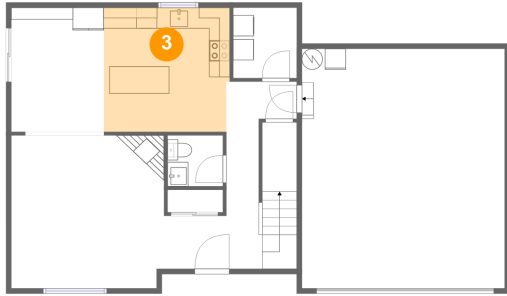
Dimensions: 5'4" x 4'11"
Area: 26 sq. ft
Counted as living area: Yes

Heated: Yes
Finished: Yes
Enclosed: Yes
Contiguous: Yes
Permitted: Yes
Wet space: Yes
Addition: No
Conversion: No

Home report

3012 Ash Street, Forest Grove, Washington County, Oregon,
United States, 97116

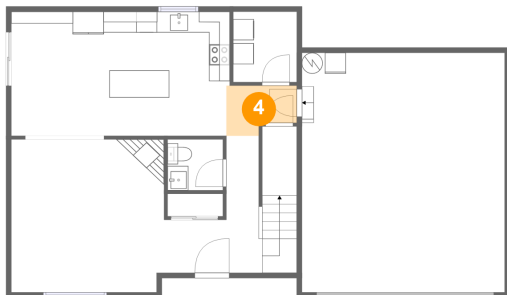
3 Floor 1 - Kitchen



Dimensions: 12'1" x 11'11"
Area: 142 sq. ft
Counted as living area: Yes

Heated: Yes
Finished: Yes
Enclosed: Yes
Contiguous: Yes
Permitted: Yes
Wet space: No
Addition: No
Conversion: No

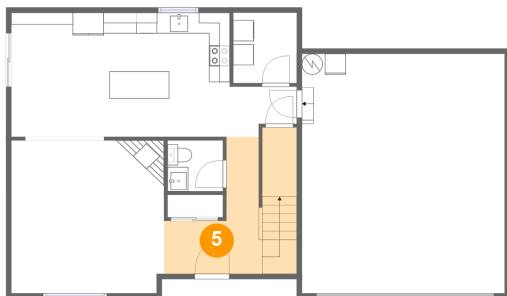
4 Floor 1 - Hall



Dimensions: 6'9" x 4'10"
Area: 28 sq. ft
Counted as living area: Yes

Heated: Yes
Finished: Yes
Enclosed: Yes
Contiguous: Yes
Permitted: Yes
Wet space: No
Addition: No
Conversion: No

5 Floor 1 - Foyer

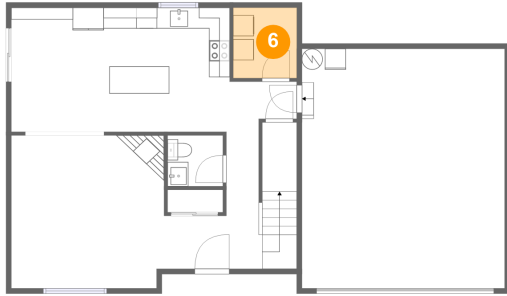


Dimensions: 9'1" x 13'2"
Area: 120 sq. ft
Counted as living area: Yes

Heated: Yes
Finished: Yes
Enclosed: Yes
Contiguous: Yes
Permitted: Yes
Wet space: No
Addition: No
Conversion: No

3012 Ash Street, Forest Grove, Washington County, Oregon,
United States, 97116

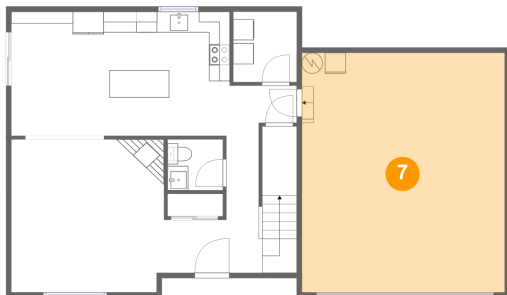
6 Floor 1 - Laundry



Dimensions: 6'1" x 6'9"
Area: 41 sq. ft
Counted as living area: Yes

Heated: Yes
Finished: Yes
Enclosed: Yes
Contiguous: Yes
Permitted: Yes
Wet space: No
Addition: No
Conversion: No

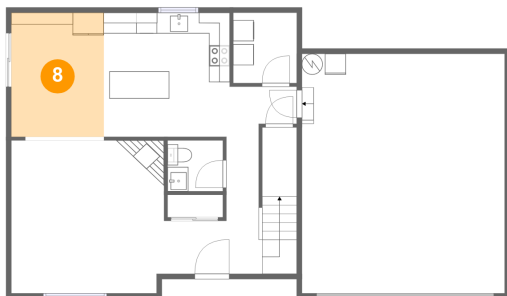
7 Floor 1 - Garage



Dimensions: 19'5" x 23'0"
Area: 447 sq. ft
Counted as living area: No

Heated: No
Finished: No
Enclosed: Yes
Contiguous: Yes
Permitted: Yes
Wet space: No
Addition: No
Conversion: No

8 Floor 1 - Dining Area

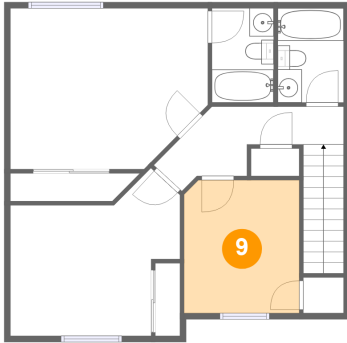


Dimensions: 8'11" x 11'11"
Area: 106 sq. ft
Counted as living area: Yes

Heated: Yes
Finished: Yes
Enclosed: Yes
Contiguous: Yes
Permitted: Yes
Wet space: No
Addition: No
Conversion: No

3012 Ash Street, Forest Grove, Washington County, Oregon,
United States, 97116

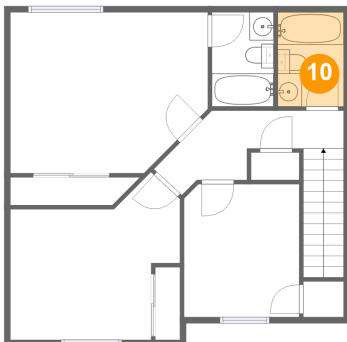
9 Floor 2 - Bedroom



Dimensions: 9'6" x 10'11"
Area: 103 sq. ft
Counted as living area: Yes

Heated: Yes
Finished: Yes
Enclosed: Yes
Contiguous: Yes
Permitted: Yes
Wet space: No
Addition: No
Conversion: No

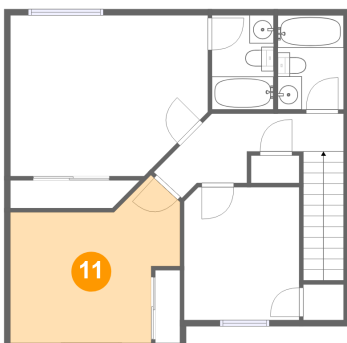
10 Floor 2 - Bath



Dimensions: 5'5" x 7'9"
Area: 42 sq. ft
Counted as living area: Yes

Heated: Yes
Finished: Yes
Enclosed: Yes
Contiguous: Yes
Permitted: Yes
Wet space: Yes
Addition: No
Conversion: No

11 Floor 2 - Bedroom

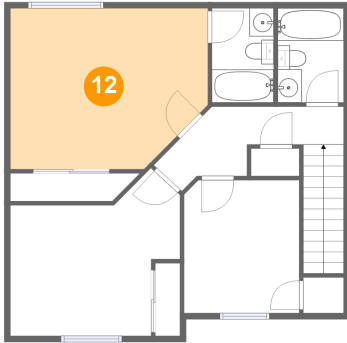


Dimensions: 13'11" x 13'9"
Area: 144 sq. ft
Counted as living area: Yes

Heated: Yes
Finished: Yes
Enclosed: Yes
Contiguous: Yes
Permitted: Yes
Wet space: No
Addition: No
Conversion: No

3012 Ash Street, Forest Grove, Washington County, Oregon,
United States, 97116

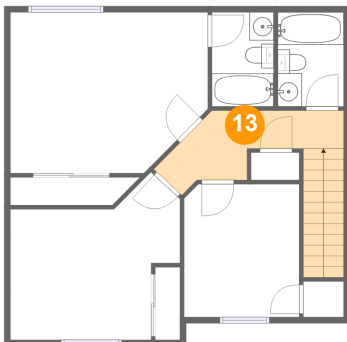
12 Floor 2 - Primary Bedroom



Dimensions: 16'3" x 13'2"
Area: 201 sq. ft
Counted as living area: Yes

Heated: Yes
Finished: Yes
Enclosed: Yes
Contiguous: Yes
Permitted: Yes
Wet space: No
Addition: No
Conversion: No

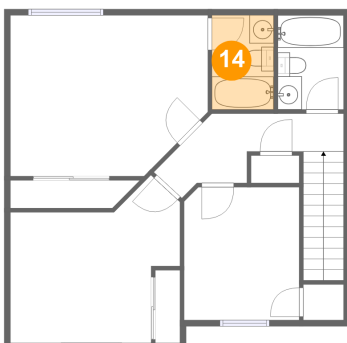
13 Floor 2 - Hall



Dimensions: 13'7" x 5'8"
Area: 93 sq. ft
Counted as living area: Yes

Heated: Yes
Finished: Yes
Enclosed: Yes
Contiguous: Yes
Permitted: Yes
Wet space: No
Addition: No
Conversion: No

14 Floor 2 - Bath



Dimensions: 5'1" x 7'9"
Area: 39 sq. ft
Counted as living area: Yes

Heated: Yes
Finished: Yes
Enclosed: Yes
Contiguous: Yes
Permitted: Yes
Wet space: Yes
Addition: No
Conversion: No