

5008 Meadow Creek Drive, Laurel Hills, Cave Spring, Roanoke, Roanoke County, Virginia, United States,



Property summary


 **2** Garages

 **6** Bedrooms

 **4** Bathrooms

 **1** Half baths

 **3** Floors

 **4,353** Gross living area sqft

 **6,684** Total sqft

5008 Meadow Creek Drive, Laurel Hills, Cave Spring, Roanoke, Roanoke County, Virginia, United States,



Room dimensions

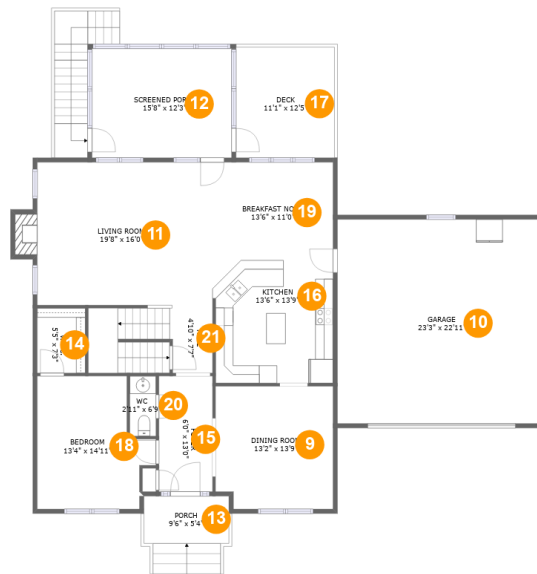
Floor 1

Total sqft: 2661

Living area: 1312

#		Dimensions	sqft	Counted as living area
1	Electrical Room	4'10" x 8'5"	40 sq. ft	No
2	Screened Porch	10'11" x 12'3"	133 sq. ft	No
3	Bath	8'9" x 8'5"	73 sq. ft	Yes
4	Bedroom	11'2" x 13'9"	154 sq. ft	Yes
5	Patio	34'2" x 22'7"	590 sq. ft	No
6	Recreation Room	35'8" x 16'0"	543 sq. ft	Yes
7	Garage	23'3" x 22'11"	533 sq. ft	No
8	Exercise Room	21'8" x 20'3"	415 sq. ft	Yes

5008 Meadow Creek Drive, Laurel Hills, Cave Spring, Roanoke, Roanoke County, Virginia, United States,



Room dimensions

Floor 2

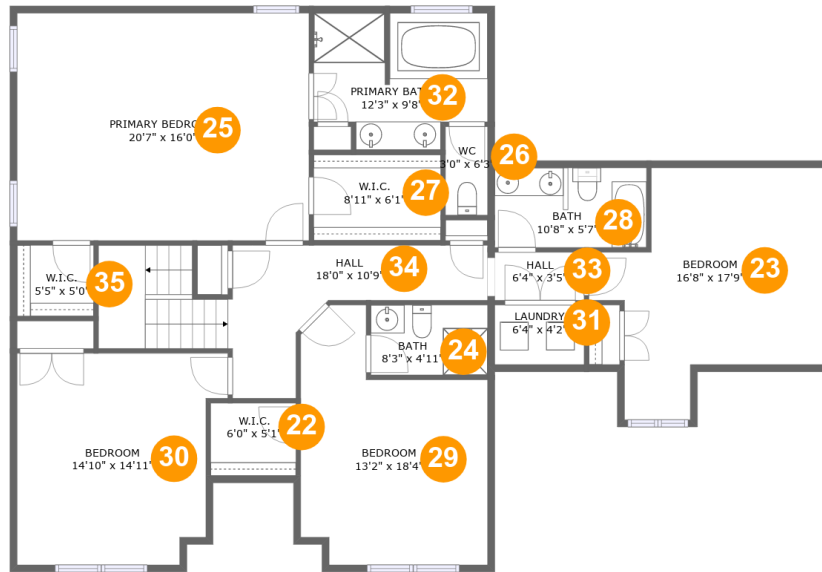
Total sqft: 2327 Living area: 1345

#		Dimensions	sqft	Counted as living area
9	Dining Room	13'2" x 13'9"	178 sq. ft	Yes
10	Garage	23'3" x 22'11"	533 sq. ft	No
11	Living Room	19'8" x 16'0"	327 sq. ft	Yes
12	Screened Porch	15'8" x 12'3"	192 sq. ft	No
13	Porch	9'6" x 5'4"	51 sq. ft	No
14	W.I.C.	5'5" x 7'3"	39 sq. ft	Yes
15	Foyer	6'0" x 13'0"	78 sq. ft	Yes
16	Kitchen	13'6" x 13'9"	183 sq. ft	Yes
17	Deck	11'1" x 12'5"	137 sq. ft	No
18	Bedroom	13'4" x 14'11"	166 sq. ft	Yes
19	Breakfast Nook	13'6" x 11'0"	149 sq. ft	Yes

**5008 Meadow Creek Drive, Laurel Hills, Cave Spring,
Roanoke, Roanoke County, Virginia, United States,**

#		Dimensions	sqft	Counted as living area
20	WC	2'11" x 6'9"	20 sq. ft	Yes
21	Hall	4'10" x 7'7"	101 sq. ft	Yes

5008 Meadow Creek Drive, Laurel Hills, Cave Spring, Roanoke, Roanoke County, Virginia, United States,



Room dimensions

Floor 3

Total sqft: 1696 Living area: 1696

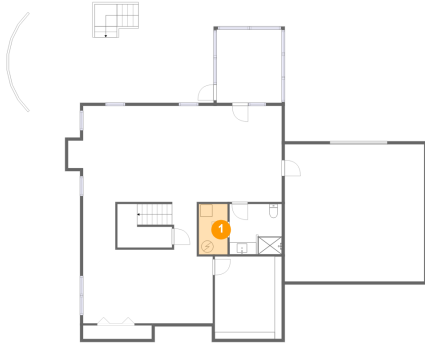
#		Dimensions	sqft	Counted as living area
22	W.I.C.	6'0" x 5'1"	31 sq. ft	Yes
23	Bedroom	16'8" x 17'9"	211 sq. ft	Yes
24	Bath	8'3" x 4'11"	41 sq. ft	Yes
25	Primary Bedroom	20'7" x 16'0"	330 sq. ft	Yes
26	WC	3'0" x 6'3"	19 sq. ft	Yes
27	W.I.C.	8'11" x 6'1"	54 sq. ft	Yes
28	Bath	10'8" x 5'7"	60 sq. ft	Yes
29	Bedroom	13'2" x 18'4"	190 sq. ft	Yes
30	Bedroom	14'10" x 14'11"	200 sq. ft	Yes
31	Laundry	6'4" x 4'2"	26 sq. ft	Yes
32	Primary Bath	12'3" x 9'8"	104 sq. ft	Yes

**5008 Meadow Creek Drive, Laurel Hills, Cave Spring,
Roanoke, Roanoke County, Virginia, United States,**

#		Dimensions	sqft	Counted as living area
33	Hall	6'4" x 3'5"	21 sq. ft	Yes
34	Hall	18'0" x 10'9"	161 sq. ft	Yes
35	W.I.C.	5'5" x 5'0"	27 sq. ft	Yes

**5008 Meadow Creek Drive, Laurel Hills, Cave Spring,
Roanoke, Roanoke County, Virginia, United States,**

1 Floor 1 - Electrical Room



Dimensions: 4'10" x 8'5"
Area: 40 sq. ft
Counted as living area: No

Heated: No
Finished: No
Enclosed: Yes
Contiguous: Yes
Permitted: Yes
Wet space: No
Addition: No
Conversion: No

2 Floor 1 - Screened Porch



Dimensions: 10'11" x 12'3"
Area: 133 sq. ft
Counted as living area: No

Heated: No
Finished: Yes
Enclosed: No
Contiguous: Yes
Permitted: Yes
Wet space: No
Addition: No
Conversion: No

**5008 Meadow Creek Drive, Laurel Hills, Cave Spring,
Roanoke, Roanoke County, Virginia, United States,**

3 Floor 1 - Bath



Dimensions: 8'9" x 8'5"
Area: 73 sq. ft
Counted as living area: Yes

Heated: Yes
Finished: Yes
Enclosed: Yes
Contiguous: Yes
Permitted: Yes
Wet space: Yes
Addition: No
Conversion: No

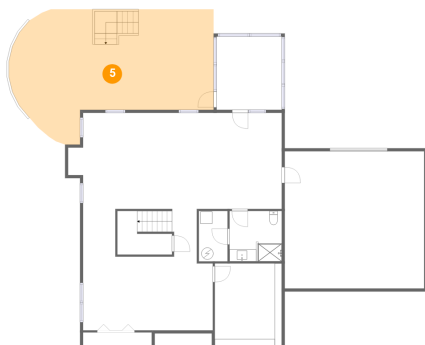
4 Floor 1 - Bedroom



Dimensions: 11'2" x 13'9"
Area: 154 sq. ft
Counted as living area: Yes

Heated: Yes
Finished: Yes
Enclosed: Yes
Contiguous: Yes
Permitted: Yes
Wet space: No
Addition: No
Conversion: No

5 Floor 1 - Patio

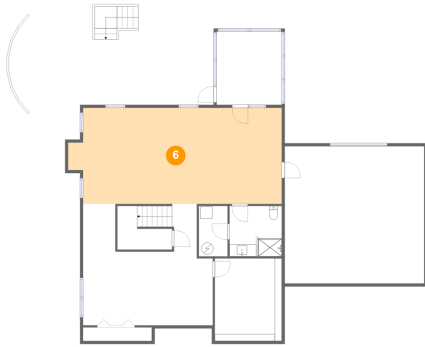


Dimensions: 34'2" x 22'7"
Area: 590 sq. ft
Counted as living area: No

Heated: No
Finished: Yes
Enclosed: No
Contiguous: Yes
Permitted: Yes
Wet space: No
Addition: No
Conversion: No

**5008 Meadow Creek Drive, Laurel Hills, Cave Spring,
Roanoke, Roanoke County, Virginia, United States,**

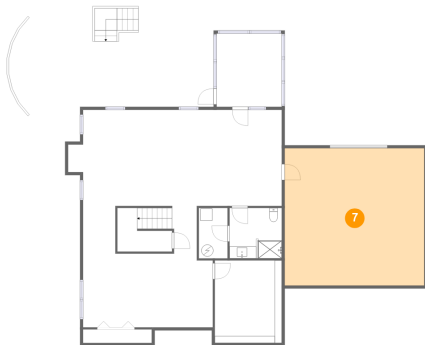
6 Floor 1 - Recreation Room



Dimensions: 35'8" x 16'0"
Area: 543 sq. ft
Counted as living area: Yes

Heated: Yes
Finished: Yes
Enclosed: Yes
Contiguous: Yes
Permitted: Yes
Wet space: No
Addition: No
Conversion: No

7 Floor 1 - Garage



Dimensions: 23'3" x 22'11"
Area: 533 sq. ft
Counted as living area: No

Heated: No
Finished: No
Enclosed: Yes
Contiguous: Yes
Permitted: Yes
Wet space: No
Addition: No
Conversion: No

8 Floor 1 - Exercise Room



Dimensions: 21'8" x 20'3"
Area: 415 sq. ft
Counted as living area: Yes

Heated: Yes
Finished: Yes
Enclosed: Yes
Contiguous: Yes
Permitted: Yes
Wet space: No
Addition: No
Conversion: No

5008 Meadow Creek Drive, Laurel Hills, Cave Spring, Roanoke, Roanoke County, Virginia, United States,

9 Floor 2 - Dining Room



Dimensions: 13'2" x 13'9"
Area: 178 sq. ft
Counted as living area: Yes

Heated: Yes
Finished: Yes
Enclosed: Yes
Contiguous: Yes
Permitted: Yes
Wet space: No
Addition: No
Conversion: No

10 Floor 2 - Garage



Dimensions: 23'3" x 22'11"
Area: 533 sq. ft
Counted as living area: No

Heated: No
Finished: No
Enclosed: Yes
Contiguous: Yes
Permitted: Yes
Wet space: No
Addition: No
Conversion: No

11 Floor 2 - Living Room



Dimensions: 19'8" x 16'0"
Area: 327 sq. ft
Counted as living area: Yes

Heated: Yes
Finished: Yes
Enclosed: Yes
Contiguous: Yes
Permitted: Yes
Wet space: No
Addition: No
Conversion: No

**5008 Meadow Creek Drive, Laurel Hills, Cave Spring,
Roanoke, Roanoke County, Virginia, United States,**

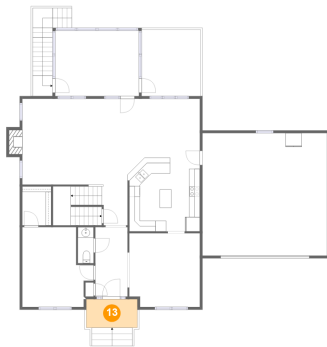
12 Floor 2 - Screened Porch



Dimensions: 15'8" x 12'3"
Area: 192 sq. ft
Counted as living area: No

Heated: No
Finished: Yes
Enclosed: No
Contiguous: Yes
Permitted: Yes
Wet space: No
Addition: No
Conversion: No

13 Floor 2 - Porch



Dimensions: 9'6" x 5'4"
Area: 51 sq. ft
Counted as living area: No

Heated: No
Finished: Yes
Enclosed: No
Contiguous: Yes
Permitted: Yes
Wet space: No
Addition: No
Conversion: No

14 Floor 2 - W.I.C.

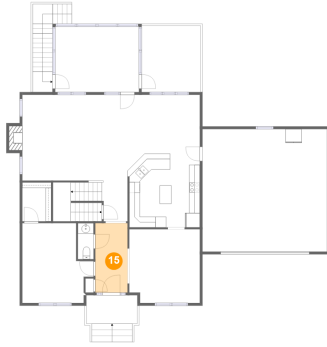


Dimensions: 5'5" x 7'3"
Area: 39 sq. ft
Counted as living area: Yes

Heated: Yes
Finished: Yes
Enclosed: Yes
Contiguous: Yes
Permitted: Yes
Wet space: No
Addition: No
Conversion: No

5008 Meadow Creek Drive, Laurel Hills, Cave Spring, Roanoke, Roanoke County, Virginia, United States,

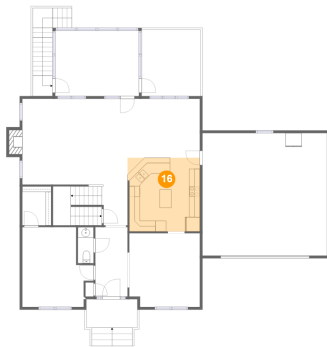
15 Floor 2 - Foyer



Dimensions: 6'0" x 13'0"
Area: 78 sq. ft
Counted as living area: Yes

Heated: Yes
Finished: Yes
Enclosed: Yes
Contiguous: Yes
Permitted: Yes
Wet space: No
Addition: No
Conversion: No

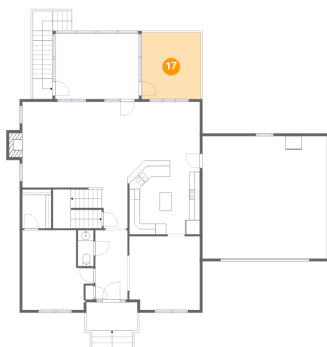
16 Floor 2 - Kitchen



Dimensions: 13'6" x 13'9"
Area: 183 sq. ft
Counted as living area: Yes

Heated: Yes
Finished: Yes
Enclosed: Yes
Contiguous: Yes
Permitted: Yes
Wet space: No
Addition: No
Conversion: No

17 Floor 2 - Deck

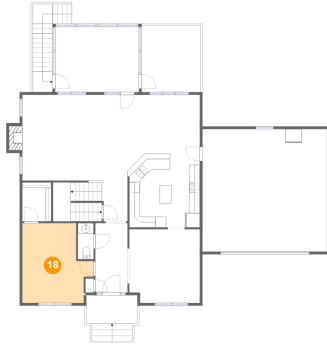


Dimensions: 11'1" x 12'5"
Area: 137 sq. ft
Counted as living area: No

Heated: No
Finished: Yes
Enclosed: No
Contiguous: No
Permitted: Yes
Wet space: No
Addition: No
Conversion: No

5008 Meadow Creek Drive, Laurel Hills, Cave Spring, Roanoke, Roanoke County, Virginia, United States,

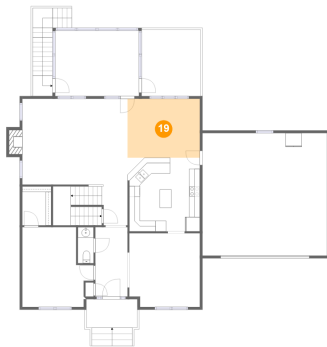
18 Floor 2 - Bedroom



Dimensions: 13'4" x 14'11"
Area: 166 sq. ft
Counted as living area: Yes

Heated: Yes
Finished: Yes
Enclosed: Yes
Contiguous: Yes
Permitted: Yes
Wet space: No
Addition: No
Conversion: No

19 Floor 2 - Breakfast Nook



Dimensions: 13'6" x 11'0"
Area: 149 sq. ft
Counted as living area: Yes

Heated: Yes
Finished: Yes
Enclosed: Yes
Contiguous: Yes
Permitted: Yes
Wet space: No
Addition: No
Conversion: No

20 Floor 2 - WC



Dimensions: 2'11" x 6'9"
Area: 20 sq. ft
Counted as living area: Yes

Heated: Yes
Finished: Yes
Enclosed: Yes
Contiguous: Yes
Permitted: Yes
Wet space: Yes
Addition: No
Conversion: No

**5008 Meadow Creek Drive, Laurel Hills, Cave Spring,
Roanoke, Roanoke County, Virginia, United States,**

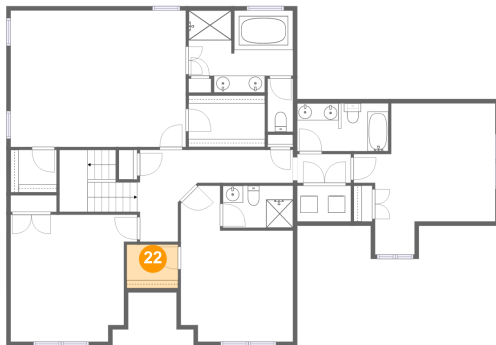
21 Floor 2 - Hall



Dimensions: 4'10" x 7'7"
Area: 101 sq. ft
Counted as living area: Yes

Heated: Yes
Finished: Yes
Enclosed: Yes
Contiguous: Yes
Permitted: Yes
Wet space: No
Addition: No
Conversion: No

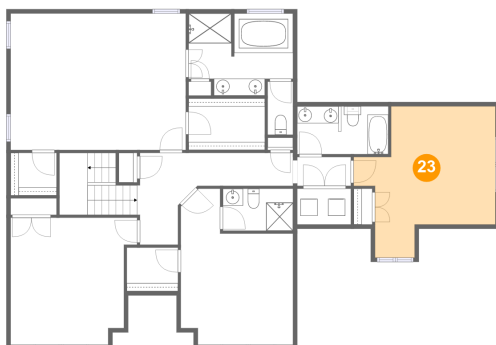
22 Floor 3 - W.I.C.



Dimensions: 6'0" x 5'1"
Area: 31 sq. ft
Counted as living area: Yes

Heated: Yes
Finished: Yes
Enclosed: Yes
Contiguous: Yes
Permitted: Yes
Wet space: No
Addition: No
Conversion: No

23 Floor 3 - Bedroom

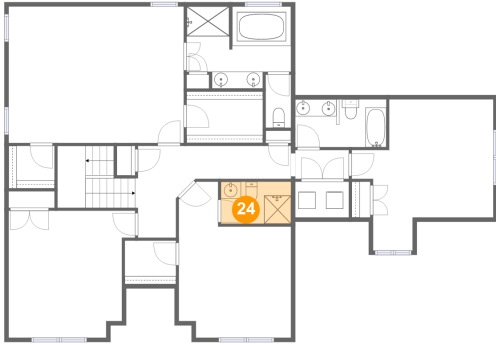


Dimensions: 16'8" x 17'9"
Area: 211 sq. ft
Counted as living area: Yes

Heated: Yes
Finished: Yes
Enclosed: Yes
Contiguous: Yes
Permitted: Yes
Wet space: No
Addition: No
Conversion: No

5008 Meadow Creek Drive, Laurel Hills, Cave Spring,
Roanoke, Roanoke County, Virginia, United States,

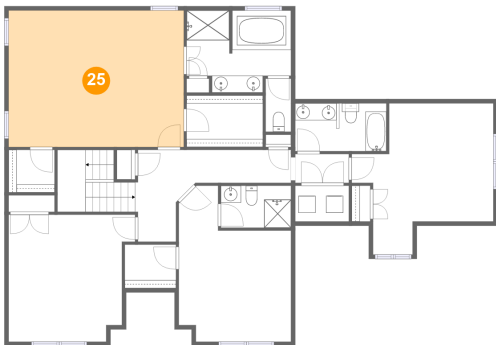
24 Floor 3 - Bath



Dimensions: 8'3" x 4'11"
Area: 41 sq. ft
Counted as living area: Yes

Heated: Yes
Finished: Yes
Enclosed: Yes
Contiguous: Yes
Permitted: Yes
Wet space: Yes
Addition: No
Conversion: No

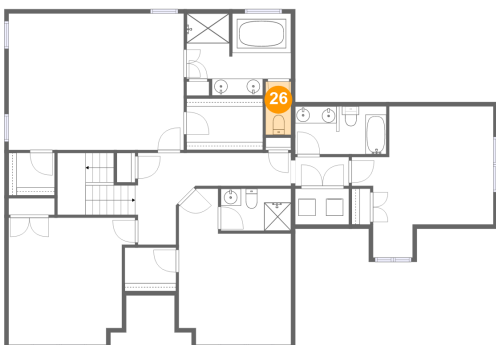
25 Floor 3 - Primary Bedroom



Dimensions: 20'7" x 16'0"
Area: 330 sq. ft
Counted as living area: Yes

Heated: Yes
Finished: Yes
Enclosed: Yes
Contiguous: Yes
Permitted: Yes
Wet space: No
Addition: No
Conversion: No

26 Floor 3 - WC

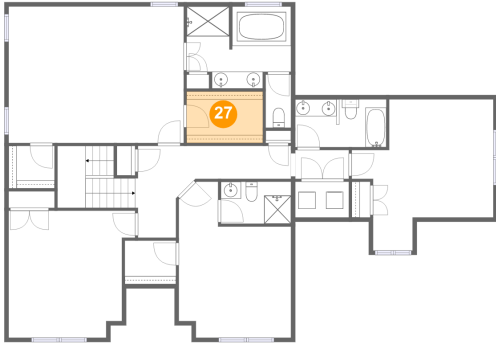


Dimensions: 3'0" x 6'3"
Area: 19 sq. ft
Counted as living area: Yes

Heated: Yes
Finished: Yes
Enclosed: Yes
Contiguous: Yes
Permitted: Yes
Wet space: Yes
Addition: No
Conversion: No

**5008 Meadow Creek Drive, Laurel Hills, Cave Spring,
Roanoke, Roanoke County, Virginia, United States,**

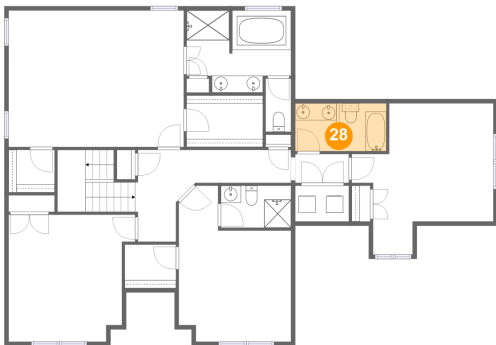
27 Floor 3 - W.I.C.



Dimensions: 8'11" x 6'1"
Area: 54 sq. ft
Counted as living area: Yes

Heated: Yes
Finished: Yes
Enclosed: Yes
Contiguous: Yes
Permitted: Yes
Wet space: No
Addition: No
Conversion: No

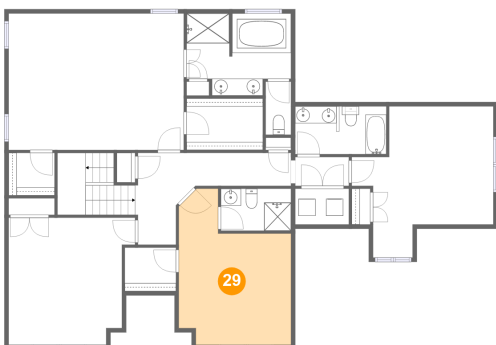
28 Floor 3 - Bath



Dimensions: 10'8" x 5'7"
Area: 60 sq. ft
Counted as living area: Yes

Heated: Yes
Finished: Yes
Enclosed: Yes
Contiguous: Yes
Permitted: Yes
Wet space: Yes
Addition: No
Conversion: No

29 Floor 3 - Bedroom

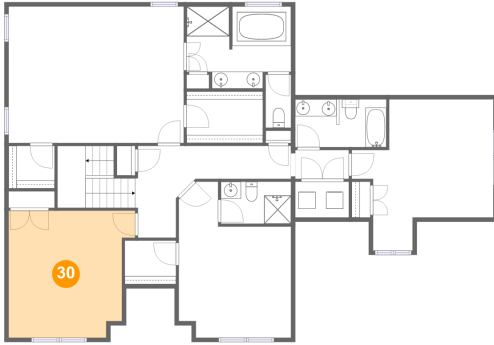


Dimensions: 13'2" x 18'4"
Area: 190 sq. ft
Counted as living area: Yes

Heated: Yes
Finished: Yes
Enclosed: Yes
Contiguous: Yes
Permitted: Yes
Wet space: No
Addition: No
Conversion: No

**5008 Meadow Creek Drive, Laurel Hills, Cave Spring,
Roanoke, Roanoke County, Virginia, United States,**

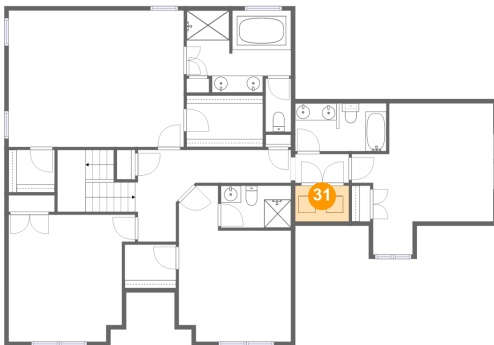
30 Floor 3 - Bedroom



Dimensions: 14'10" x 14'11"
Area: 200 sq. ft
Counted as living area: Yes

Heated: Yes
Finished: Yes
Enclosed: Yes
Contiguous: Yes
Permitted: Yes
Wet space: No
Addition: No
Conversion: No

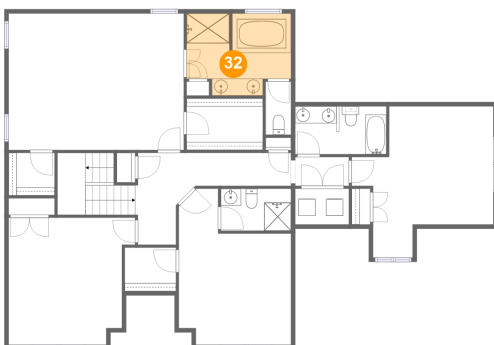
31 Floor 3 - Laundry



Dimensions: 6'4" x 4'2"
Area: 26 sq. ft
Counted as living area: Yes

Heated: Yes
Finished: Yes
Enclosed: Yes
Contiguous: Yes
Permitted: Yes
Wet space: No
Addition: No
Conversion: No

32 Floor 3 - Primary Bath

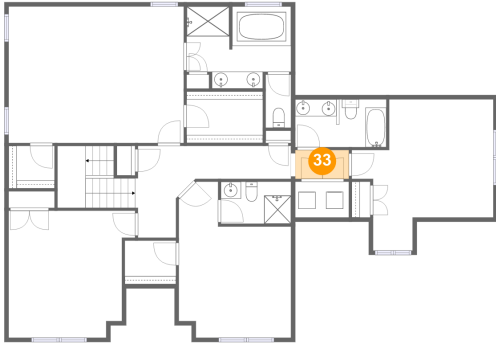


Dimensions: 12'3" x 9'8"
Area: 104 sq. ft
Counted as living area: Yes

Heated: Yes
Finished: Yes
Enclosed: Yes
Contiguous: Yes
Permitted: Yes
Wet space: Yes
Addition: No
Conversion: No

5008 Meadow Creek Drive, Laurel Hills, Cave Spring,
Roanoke, Roanoke County, Virginia, United States,

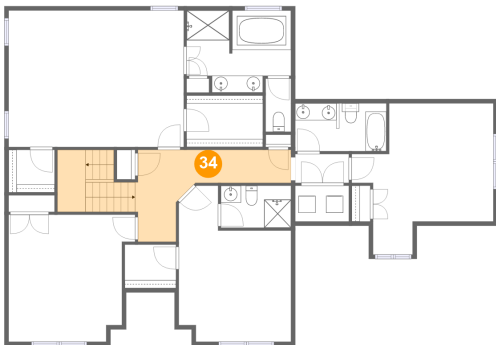
33 Floor 3 - Hall



Dimensions: 6'4" x 3'5"
Area: 21 sq. ft
Counted as living area: Yes

Heated: Yes
Finished: Yes
Enclosed: Yes
Contiguous: Yes
Permitted: Yes
Wet space: No
Addition: No
Conversion: No

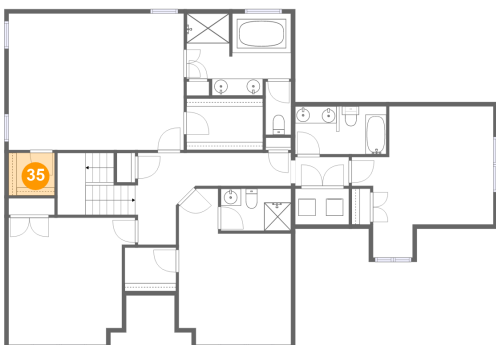
34 Floor 3 - Hall



Dimensions: 18'0" x 10'9"
Area: 161 sq. ft
Counted as living area: Yes

Heated: Yes
Finished: Yes
Enclosed: Yes
Contiguous: Yes
Permitted: Yes
Wet space: No
Addition: No
Conversion: No

35 Floor 3 - W.I.C.



Dimensions: 5'5" x 5'0"
Area: 27 sq. ft
Counted as living area: Yes

Heated: Yes
Finished: Yes
Enclosed: Yes
Contiguous: Yes
Permitted: Yes
Wet space: No
Addition: No
Conversion: No