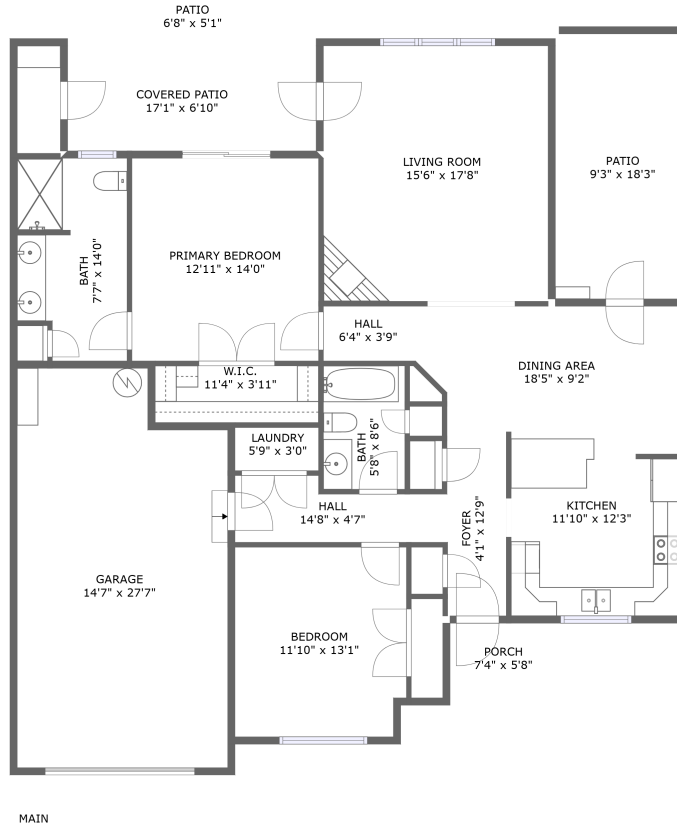


76 Retirement Drive, Westlake Corner, Hardy, Franklin County, Virginia, United States, 24101

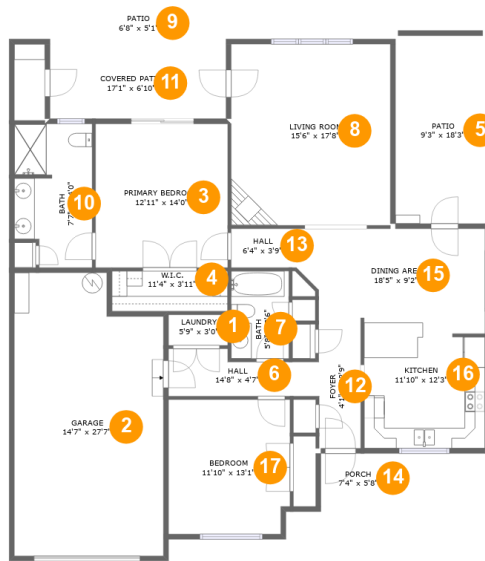


Property Summary

1 garages **2** bedrooms **2** bathrooms **0** half baths

1 floors **1,444** Gross Living Area sqft **2,241** total sqft

76 Retirement Drive, Westlake Corner, Hardy, Franklin County, Virginia, United States, 24101



Room Dimensions

Floor 1

Total sqft: 2241

Living area: 1444

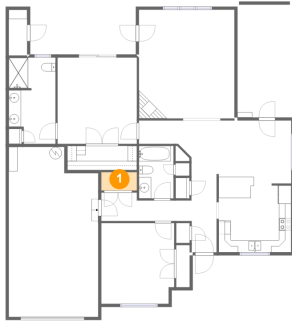
#	Room name	Dimensions	Area (sqft)	Counted as Living Area
1	Laundry	5'9" x 3'0"	17 sq. ft	Yes
2	Garage	14'7" x 27'7"	379 sq. ft	No
3	Primary Bedroom	12'11" x 14'0"	181 sq. ft	Yes
4	W.i.c.	11'4" x 3'11"	45 sq. ft	Yes
5	Patio	9'3" x 18'3"	169 sq. ft	No
6	Hall	14'8" x 4'7"	56 sq. ft	Yes
7	Bath	5'8" x 8'6"	48 sq. ft	Yes
8	Living Room	15'6" x 17'8"	275 sq. ft	Yes
9	Patio	6'8" x 5'11"	34 sq. ft	No
10	Bath	7'7" x 14'0"	99 sq. ft	Yes
11	Covered Patio	17'1" x 6'10"	119 sq. ft	No

**76 Retirement Drive, Westlake Corner, Hardy,
Franklin County, Virginia, United States, 24101**

#	Room name	Dimensions	Area (sqft)	Counted as Living Area
12	Foyer	4'1" x 12'9"	52 sq. ft	Yes
13	Hall	6'4" x 3'9"	24 sq. ft	Yes
14	Porch	7'4" x 5'8"	42 sq. ft	No
15	Dining Area	18'5" x 9'2"	158 sq. ft	Yes
16	Kitchen	11'10" x 12'3"	143 sq. ft	Yes
17	Bedroom	11'10" x 13'1"	153 sq. ft	Yes

76 Retirement Drive, Westlake Corner, Hardy, Franklin County, Virginia, United States, 24101

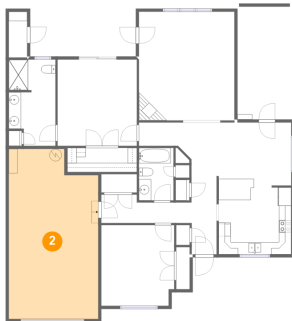
1 Floor 1 - Laundry



Dimensions: 5'9" x 3'0"
Area: 17 sq. ft
Counted as Living Area:
Yes

Heated: Yes
Finished: Yes
Enclosed: Yes
Contiguous:
Yes
Permitted: Yes
Wet Space: No
Addition: No
Conversion: No

2 Floor 1 - Garage



Dimensions: 14'7" x 27'7"
Area: 379 sq. ft
Counted as Living Area: No

Heated: No
Finished: No
Enclosed: Yes
Contiguous: Yes
Permitted: Yes
Wet Space: No
Addition: No
Conversion: No

76 Retirement Drive, Westlake Corner, Hardy, Franklin County, Virginia, United States, 24101

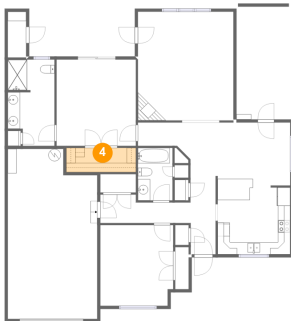
3 Floor 1 - Primary Bedroom



Dimensions: 12'11" x 14'0"
Area: 181 sq. ft
Counted as Living Area:
Yes

Heated: Yes
Finished: Yes
Enclosed: Yes
Contiguous:
Yes
Permitted: Yes
Wet Space: No
Addition: No
Conversion: No

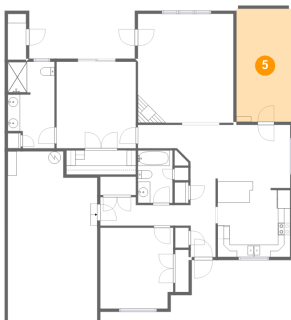
4 Floor 1 - W.i.c.



Dimensions: 11'4" x 3'11"
Area: 45 sq. ft
Counted as Living Area:
Yes

Heated: Yes
Finished: Yes
Enclosed: Yes
Contiguous:
Yes
Permitted: Yes
Wet Space: No
Addition: No
Conversion: No

5 Floor 1 - Patio

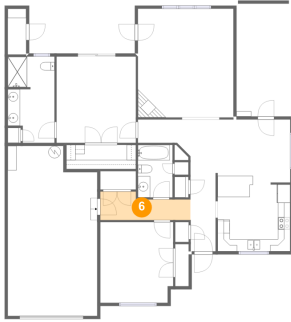


Dimensions: 9'3" x 18'3"
Area: 169 sq. ft
Counted as Living Area: No

Heated: No
Finished: Yes
Enclosed: No
Contiguous: Yes
Permitted: Yes
Wet Space: No
Addition: No
Conversion: No

76 Retirement Drive, Westlake Corner, Hardy, Franklin County, Virginia, United States, 24101

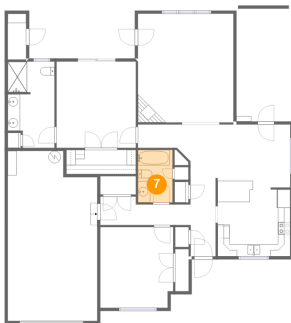
6 Floor 1 - Hall



Dimensions: 14'8" x 4'7"
Area: 56 sq. ft
Counted as Living Area:
Yes

Heated: Yes
Finished: Yes
Enclosed: Yes
Contiguous:
Yes
Permitted: Yes
Wet Space: No
Addition: No
Conversion: No

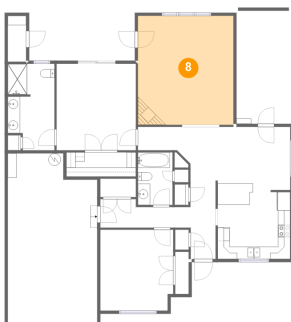
7 Floor 1 - Bath



Dimensions: 5'8" x 8'6"
Area: 48 sq. ft
Counted as Living Area:
Yes

Heated: Yes
Finished: Yes
Enclosed: Yes
Contiguous:
Yes
Permitted: Yes
Wet Space: Yes
Addition: No
Conversion: No

8 Floor 1 - Living Room



Dimensions: 15'6" x 17'8"
Area: 275 sq. ft
Counted as Living Area:
Yes

Heated: Yes
Finished: Yes
Enclosed: Yes
Contiguous:
Yes
Permitted: Yes
Wet Space: No
Addition: No
Conversion: No

76 Retirement Drive, Westlake Corner, Hardy, Franklin County, Virginia, United States, 24101

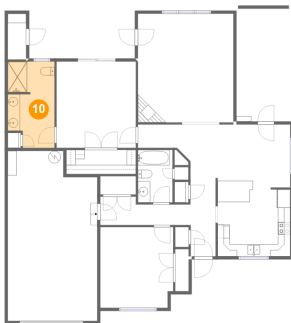
9 Floor 1 - Patio



Dimensions: 6'8" x 5'1"
Area: 34 sq. ft
Counted as Living Area: No

Heated: No
Finished: Yes
Enclosed: No
Contiguous: Yes
Permitted: Yes
Wet Space: No
Addition: No
Conversion: No

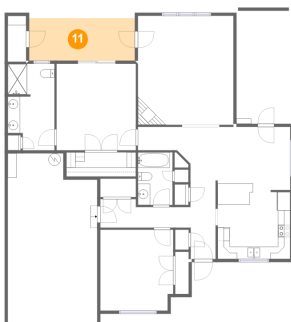
10 Floor 1 - Bath



Dimensions: 7'7" x 14'0"
Area: 99 sq. ft
Counted as Living Area:
Yes

Heated: Yes
Finished: Yes
Enclosed: Yes
Contiguous:
Yes
Permitted: Yes
Wet Space: Yes
Addition: No
Conversion: No

11 Floor 1 - Covered Patio

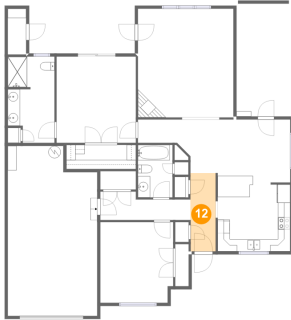


Dimensions: 17'1" x 6'10"
Area: 119 sq. ft
Counted as Living Area: No

Heated: No
Finished: Yes
Enclosed: No
Contiguous: Yes
Permitted: Yes
Wet Space: No
Addition: No
Conversion: No

76 Retirement Drive, Westlake Corner, Hardy, Franklin County, Virginia, United States, 24101

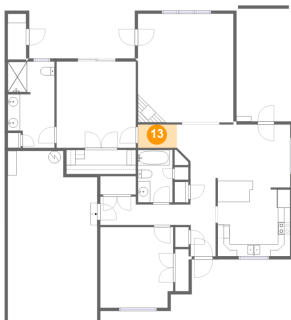
12 Floor 1 - Foyer



Dimensions: 4'1" x 12'9"
Area: 52 sq. ft
Counted as Living Area:
Yes

Heated: Yes
Finished: Yes
Enclosed: Yes
Contiguous:
Yes
Permitted: Yes
Wet Space: No
Addition: No
Conversion: No

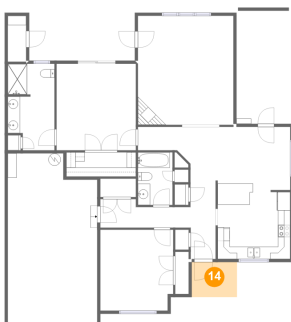
13 Floor 1 - Hall



Dimensions: 6'4" x 3'9"
Area: 24 sq. ft
Counted as Living Area:
Yes

Heated: Yes
Finished: Yes
Enclosed: Yes
Contiguous:
Yes
Permitted: Yes
Wet Space: No
Addition: No
Conversion: No

14 Floor 1 - Porch

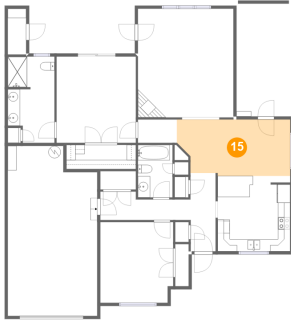


Dimensions: 7'4" x 5'8"
Area: 42 sq. ft
Counted as Living Area: No

Heated: No
Finished: Yes
Enclosed: No
Contiguous: Yes
Permitted: Yes
Wet Space: No
Addition: No
Conversion: No

76 Retirement Drive, Westlake Corner, Hardy, Franklin County, Virginia, United States, 24101

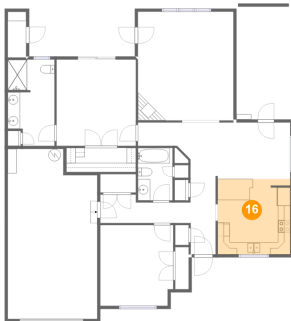
15 Floor 1 - Dining Area



Dimensions: 18'5" x 9'2"
Area: 158 sq. ft
Counted as Living Area:
Yes

Heated: Yes
Finished: Yes
Enclosed: Yes
Contiguous:
Yes
Permitted: Yes
Wet Space: No
Addition: No
Conversion: No

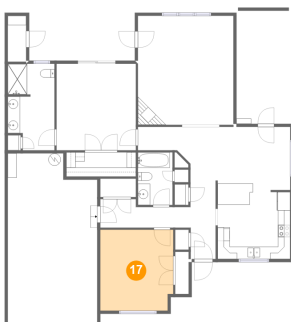
16 Floor 1 - Kitchen



Dimensions: 11'10" x 12'3"
Area: 143 sq. ft
Counted as Living Area:
Yes

Heated: Yes
Finished: Yes
Enclosed: Yes
Contiguous:
Yes
Permitted: Yes
Wet Space: No
Addition: No
Conversion: No

17 Floor 1 - Bedroom



Dimensions: 11'10" x 13'1"
Area: 153 sq. ft
Counted as Living Area:
Yes

Heated: Yes
Finished: Yes
Enclosed: Yes
Contiguous:
Yes
Permitted: Yes
Wet Space: No
Addition: No
Conversion: No