



Home report


145 Golfer's Crossing Drive, Penhook, Franklin County, Virginia,  
United States, 24137





Property summary


 **1** Garages


 **3** Bedrooms

 **2** Bathrooms

 **1** Half baths

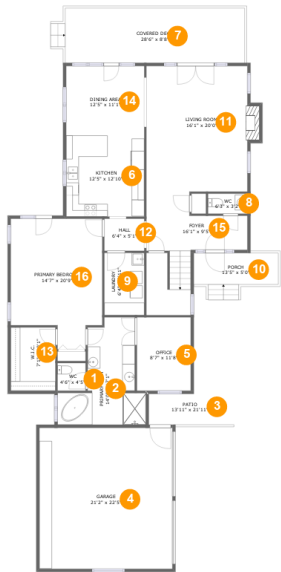
 **2** Floors

 **2,648** Gross living area sqft

 **3,987** Total sqft

Home report

145 Golfer's Crossing Drive, Penhook, Franklin County, Virginia,  
United States, 24137



Room dimensions

Floor 1 Total sqft: 2695    Living area: 1700

#		Max Dimensions	sqft	Included
1	WC	4'6" x 4'5"	20 sq. ft	Yes
2	Primary Bath	14'0" x 17'1"	156 sq. ft	Yes
3	Patio	13'11" x 21'11"	155 sq. ft	No
4	Garage	21'2" x 22'5"	475 sq. ft	No
5	Office	8'7" x 11'8"	100 sq. ft	Yes
6	Kitchen	12'5" x 12'10"	160 sq. ft	Yes
7	Covered Deck	28'6" x 8'8"	249 sq. ft	No
8	WC	6'3" x 3'2"	20 sq. ft	Yes
9	Laundry	6'4" x 9'11"	63 sq. ft	Yes
10	Porch	13'5" x 5'0"	67 sq. ft	No
11	Living Room	16'1" x 20'0"	331 sq. ft	Yes

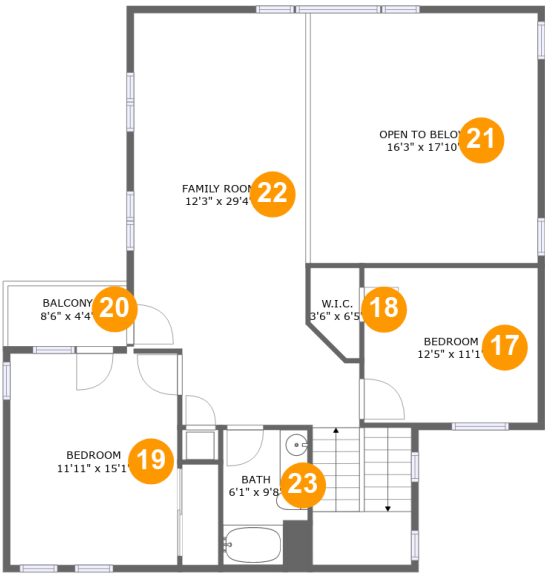
## Home report

**145 Golfer's Crossing Drive, Penhook, Franklin County, Virginia,  
United States, 24137**

#		Max Dimensions	sqft	Included
12	Hall	6'4" x 5'1"	32 sq. ft	Yes
13	W.I.C.	7'1" x 10'1"	72 sq. ft	Yes
14	Dining Area	12'5" x 11'1"	138 sq. ft	Yes
15	Foyer	16'1" x 9'5"	184 sq. ft	Yes
16	Primary Bedroom	14'7" x 20'9"	264 sq. ft	Yes

Home report

145 Golfer's Crossing Drive, Penhook, Franklin County, Virginia,  
United States, 24137



Room dimensions

Floor 2 Total sqft: 1292    Living area: 948

#		Max Dimensions	sqft	Included
17	Bedroom	12'5" x 11'1"	137 sq. ft	Yes
18	W.I.C.	3'6" x 6'5"	19 sq. ft	Yes
19	Bedroom	11'11" x 15'1"	180 sq. ft	Yes
20	Balcony	8'6" x 4'4"	37 sq. ft	No
21	Open To Below	16'3" x 17'10"	290 sq. ft	No
22	Family Room	12'3" x 29'4"	438 sq. ft	Yes
23	Bath	6'1" x 9'8"	53 sq. ft	Yes

1 Floor 1 - WC



Max Dimensions: 4'6" x 4'5"  
Calculated Area: 20 sq. ft  
Included: Yes

Heated: Yes  
Finished: Yes  
Enclosed: Yes  
Contiguous: Yes  
Permitted: Yes  
Wet space: Yes  
Addition: No  
Conversion: No

2 Floor 1 - Primary Bath



Max Dimensions: 14'0" x 17'1"  
Calculated Area: 156 sq. ft  
Included: Yes

Heated: Yes  
Finished: Yes  
Enclosed: Yes  
Contiguous: Yes  
Permitted: Yes  
Wet space: Yes  
Addition: No  
Conversion: No

3 Floor 1 - Patio



Max Dimensions: 13'11" x 21'11"  
Calculated Area: 155 sq. ft  
Included: No

Heated: No  
Finished: Yes  
Enclosed: No  
Contiguous: Yes  
Permitted: Yes  
Wet space: No  
Addition: No  
Conversion: No

4 Floor 1 - Garage



Max Dimensions: 21'2" x 22'5"  
Calculated Area: 475 sq. ft  
Included: No

Heated: No  
Finished: No  
Enclosed: Yes  
Contiguous: Yes  
Permitted: Yes  
Wet space: No  
Addition: No  
Conversion: No

5 Floor 1 - Office



Max Dimensions: 8'7" x 11'8"  
Calculated Area: 100 sq. ft  
Included: Yes

Heated: Yes  
Finished: Yes  
Enclosed: Yes  
Contiguous: Yes  
Permitted: Yes  
Wet space: No  
Addition: No  
Conversion: No

6 Floor 1 - Kitchen



Max Dimensions: 12'5" x 12'10"  
Calculated Area: 160 sq. ft  
Included: Yes

Heated: Yes  
Finished: Yes  
Enclosed: Yes  
Contiguous: Yes  
Permitted: Yes  
Wet space: No  
Addition: No  
Conversion: No

7 Floor 1 - Covered Deck



Max Dimensions: 28'6" x 8'8"  
Calculated Area: 249 sq. ft  
Included: No

Heated: No  
Finished: Yes  
Enclosed: No  
Contiguous: Yes  
Permitted: Yes  
Wet space: No  
Addition: No  
Conversion: No

8 Floor 1 - WC



Max Dimensions: 6'3" x 3'2"  
Calculated Area: 20 sq. ft  
Included: Yes

Heated: Yes  
Finished: Yes  
Enclosed: Yes  
Contiguous: Yes  
Permitted: Yes  
Wet space: Yes  
Addition: No  
Conversion: No

9 Floor 1 - Laundry



Max Dimensions: 6'4" x 9'11"  
Calculated Area: 63 sq. ft  
Included: Yes

Heated: Yes  
Finished: Yes  
Enclosed: Yes  
Contiguous: Yes  
Permitted: Yes  
Wet space: No  
Addition: No  
Conversion: No

10 Floor 1 - Porch



Max Dimensions: 13'5" x 5'0"  
Calculated Area: 67 sq. ft  
Included: No

Heated: No  
Finished: Yes  
Enclosed: No  
Contiguous: Yes  
Permitted: Yes  
Wet space: No  
Addition: No  
Conversion: No

11 Floor 1 - Living Room



Max Dimensions: 16'1" x 20'0"  
Calculated Area: 331 sq. ft  
Included: Yes

Heated: Yes  
Finished: Yes  
Enclosed: Yes  
Contiguous: Yes  
Permitted: Yes  
Wet space: No  
Addition: No  
Conversion: No



12 Floor 1 - Hall



Max Dimensions: 6'4" x 5'1"  
Calculated Area: 32 sq. ft  
Included: Yes

Heated: Yes  
Finished: Yes  
Enclosed: Yes  
Contiguous: Yes  
Permitted: Yes  
Wet space: No  
Addition: No  
Conversion: No

13 Floor 1 - W.I.C.



Max Dimensions: 7'1" x 10'1"  
Calculated Area: 72 sq. ft  
Included: Yes

Heated: Yes  
Finished: Yes  
Enclosed: Yes  
Contiguous: Yes  
Permitted: Yes  
Wet space: No  
Addition: No  
Conversion: No

14 Floor 1 - Dining Area



Max Dimensions: 12'5" x 11'1"  
Calculated Area: 138 sq. ft  
Included: Yes

Heated: Yes  
Finished: Yes  
Enclosed: Yes  
Contiguous: Yes  
Permitted: Yes  
Wet space: No  
Addition: No  
Conversion: No

15 Floor 1 - Foyer



Max Dimensions: 16'1" x 9'5"  
Calculated Area: 184 sq. ft  
Included: Yes

Heated: Yes  
Finished: Yes  
Enclosed: Yes  
Contiguous: Yes  
Permitted: Yes  
Wet space: No  
Addition: No  
Conversion: No

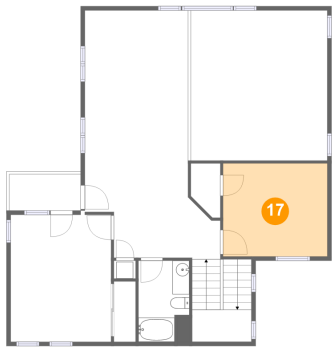
16 Floor 1 - Primary Bedroom



Max Dimensions: 14'7" x 20'9"  
Calculated Area: 264 sq. ft  
Included: Yes

Heated: Yes  
Finished: Yes  
Enclosed: Yes  
Contiguous: Yes  
Permitted: Yes  
Wet space: No  
Addition: No  
Conversion: No

17 Floor 2 - Bedroom

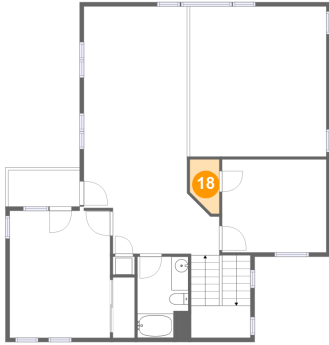


Max Dimensions: 12'5" x 11'1"  
Calculated Area: 137 sq. ft  
Included: Yes

Heated: Yes  
Finished: Yes  
Enclosed: Yes  
Contiguous: Yes  
Permitted: Yes  
Wet space: No  
Addition: No  
Conversion: No

145 Golfer's Crossing Drive, Penhook, Franklin County, Virginia,  
United States, 24137

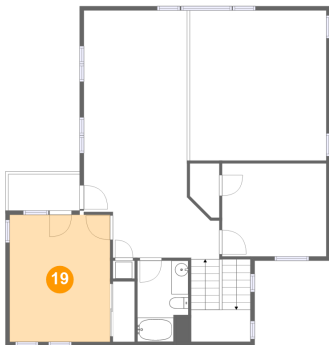
### 18 Floor 2 - W.I.C.



Max Dimensions: 3'6" x 6'5"  
Calculated Area: 19 sq. ft  
Included: Yes

Heated: Yes  
Finished: Yes  
Enclosed: Yes  
Contiguous: Yes  
Permitted: Yes  
Wet space: No  
Addition: No  
Conversion: No

### 19 Floor 2 - Bedroom



Max Dimensions: 11'11" x 15'1"  
Calculated Area: 180 sq. ft  
Included: Yes

Heated: Yes  
Finished: Yes  
Enclosed: Yes  
Contiguous: Yes  
Permitted: Yes  
Wet space: No  
Addition: No  
Conversion: No

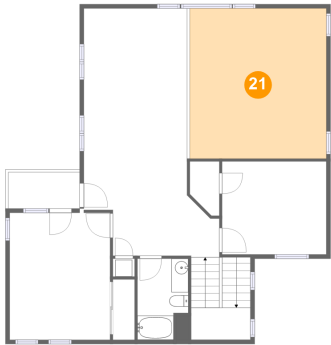
### 20 Floor 2 - Balcony



Max Dimensions: 8'6" x 4'4"  
Calculated Area: 37 sq. ft  
Included: No

Heated: No  
Finished: Yes  
Enclosed: No  
Contiguous: Yes  
Permitted: Yes  
Wet space: No  
Addition: No  
Conversion: No

21 Floor 2 - Open To Below



Max Dimensions: 16'3" x 17'10"  
Calculated Area: 290 sq. ft  
Included: No

Heated: No  
Finished: No  
Enclosed: No  
Contiguous: Yes  
Permitted: No  
Wet space: No  
Addition: No  
Conversion: No

22 Floor 2 - Family Room



Max Dimensions: 12'3" x 29'4"  
Calculated Area: 438 sq. ft  
Included: Yes

Heated: Yes  
Finished: Yes  
Enclosed: Yes  
Contiguous: Yes  
Permitted: Yes  
Wet space: No  
Addition: No  
Conversion: No

23 Floor 2 - Bath



Max Dimensions: 6'1" x 9'8"  
Calculated Area: 53 sq. ft  
Included: Yes

Heated: Yes  
Finished: Yes  
Enclosed: Yes  
Contiguous: Yes  
Permitted: Yes  
Wet space: Yes  
Addition: No  
Conversion: No