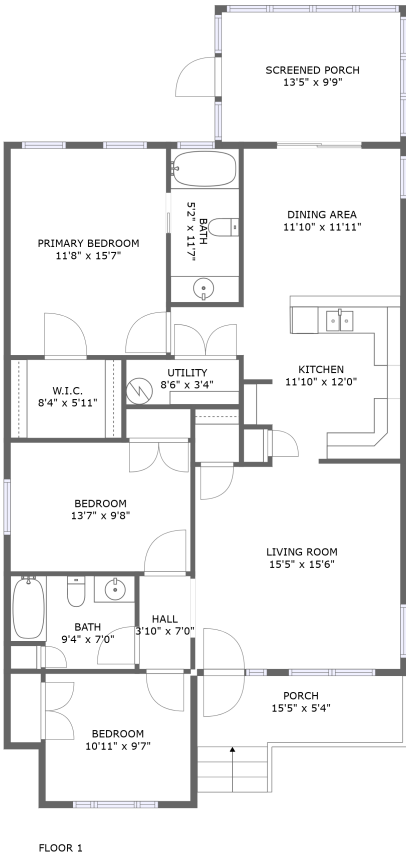


Home report

1016 Roanoke Boulevard, Bonvue Heights, Salem, Salem city,  
Virginia, United States, 24153



Property summary



0  
Garages



3  
Bedrooms



2  
Bathrooms



0  
Half baths



1  
Floors



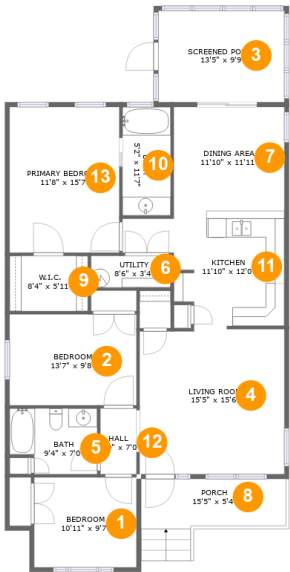
882  
Gross living  
area sqft



1,598  
Total sqft

Home report

1016 Roanoke Boulevard, Bonvue Heights, Salem, Salem city,  
Virginia, United States, 24153



Room dimensions

Floor 1 Total sqft: 1598    Living area: 882

#		Dimensions	sqft	Counted as living area
1	Bedroom	10'11" x 9'7"	105 sq. ft	Yes
2	Bedroom	13'7" x 9'8"	131 sq. ft	No
3	Screened Porch	13'5" x 9'9"	131 sq. ft	No
4	Living Room	15'5" x 15'6"	237 sq. ft	Yes
5	Bath	9'4" x 7'0"	60 sq. ft	Yes
6	Utility	8'6" x 3'4"	29 sq. ft	Yes
7	Dining Area	11'10" x 11'11"	141 sq. ft	Yes
8	Porch	15'5" x 5'4"	97 sq. ft	No
9	W.I.C.	8'4" x 5'11"	49 sq. ft	No
10	Bath	5'2" x 11'7"	60 sq. ft	No
11	Kitchen	11'10" x 12'0"	151 sq. ft	Yes

Home report

1016 Roanoke Boulevard, Bonvue Heights, Salem, Salem city,  
Virginia, United States, 24153

#		Dimensions	sqft	Counted as living area
12	Hall	3'10" x 7'0"	27 sq. ft	Yes
13	Primary Bedroom	11'8" x 15'7"	182 sq. ft	No

1016 Roanoke Boulevard, Bonvue Heights, Salem, Salem city,  
Virginia, United States, 24153

1 Floor 1 - Bedroom



Dimensions: 10'11" x 9'7"  
Area: 105 sq. ft  
Counted as living area: Yes

Heated: Yes  
Finished: Yes  
Enclosed: Yes  
Contiguous: Yes  
Permitted: Yes  
Wet space: No  
Addition: No  
Conversion: No

2 Floor 1 - Bedroom



Dimensions: 13'7" x 9'8"  
Area: 131 sq. ft  
Counted as living area: No

Heated: Yes  
Finished: No  
Enclosed: Yes  
Contiguous: Yes  
Permitted: Yes  
Wet space: No  
Addition: No  
Conversion: No

1016 Roanoke Boulevard, Bonvue Heights, Salem, Salem city,  
Virginia, United States, 24153

3 Floor 1 - Screened Porch



Dimensions: 13'5" x 9'9"  
Area: 131 sq. ft  
Counted as living area: No

Heated: No  
Finished: Yes  
Enclosed: No  
Contiguous: Yes  
Permitted: Yes  
Wet space: No  
Addition: No  
Conversion: No

4 Floor 1 - Living Room



Dimensions: 15'5" x 15'6"  
Area: 237 sq. ft  
Counted as living area: Yes

Heated: Yes  
Finished: Yes  
Enclosed: Yes  
Contiguous: Yes  
Permitted: Yes  
Wet space: No  
Addition: No  
Conversion: No

5 Floor 1 - Bath



Dimensions: 9'4" x 7'0"  
Area: 60 sq. ft  
Counted as living area: Yes

Heated: Yes  
Finished: Yes  
Enclosed: Yes  
Contiguous: Yes  
Permitted: Yes  
Wet space: Yes  
Addition: No  
Conversion: No

1016 Roanoke Boulevard, Bonvue Heights, Salem, Salem city,  
Virginia, United States, 24153

6 Floor 1 - Utility



Dimensions: 8'6" x 3'4"  
Area: 29 sq. ft  
Counted as living area: Yes

Heated: Yes  
Finished: Yes  
Enclosed: Yes  
Contiguous: Yes  
Permitted: Yes  
Wet space: No  
Addition: No  
Conversion: No

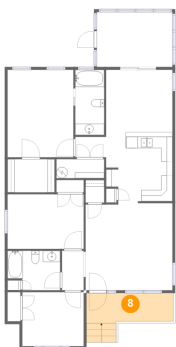
7 Floor 1 - Dining Area



Dimensions: 11'10" x 11'11"  
Area: 141 sq. ft  
Counted as living area: Yes

Heated: Yes  
Finished: Yes  
Enclosed: Yes  
Contiguous: Yes  
Permitted: Yes  
Wet space: No  
Addition: No  
Conversion: No

8 Floor 1 - Porch



Dimensions: 15'5" x 5'4"  
Area: 97 sq. ft  
Counted as living area: No

Heated: No  
Finished: Yes  
Enclosed: No  
Contiguous: Yes  
Permitted: Yes  
Wet space: No  
Addition: No  
Conversion: No

1016 Roanoke Boulevard, Bonvue Heights, Salem, Salem city,  
Virginia, United States, 24153

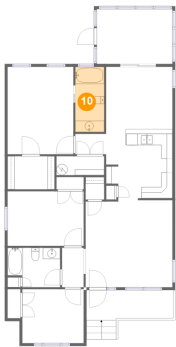
9 Floor 1 - W.I.C.



Dimensions: 8'4" x 5'11"  
Area: 49 sq. ft  
Counted as living area: No

Heated: Yes  
Finished: No  
Enclosed: Yes  
Contiguous: Yes  
Permitted: Yes  
Wet space: No  
Addition: No  
Conversion: No

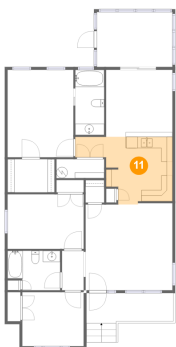
10 Floor 1 - Bath



Dimensions: 5'2" x 11'7"  
Area: 60 sq. ft  
Counted as living area: No

Heated: Yes  
Finished: Yes  
Enclosed: Yes  
Contiguous: No  
Permitted: Yes  
Wet space: Yes  
Addition: No  
Conversion: No

11 Floor 1 - Kitchen



Dimensions: 11'10" x 12'0"  
Area: 151 sq. ft  
Counted as living area: Yes

Heated: Yes  
Finished: Yes  
Enclosed: Yes  
Contiguous: Yes  
Permitted: Yes  
Wet space: No  
Addition: No  
Conversion: No

1016 Roanoke Boulevard, Bonvue Heights, Salem, Salem city,  
Virginia, United States, 24153

12 Floor 1 - Hall



Dimensions: 3'10" x 7'0"  
Area: 27 sq. ft  
Counted as living area: Yes

Heated: Yes  
Finished: Yes  
Enclosed: Yes  
Contiguous: Yes  
Permitted: Yes  
Wet space: No  
Addition: No  
Conversion: No

13 Floor 1 - Primary Bedroom



Dimensions: 11'8" x 15'7"  
Area: 182 sq. ft  
Counted as living area: No

Heated: Yes  
Finished: No  
Enclosed: Yes  
Contiguous: Yes  
Permitted: Yes  
Wet space: No  
Addition: No  
Conversion: No