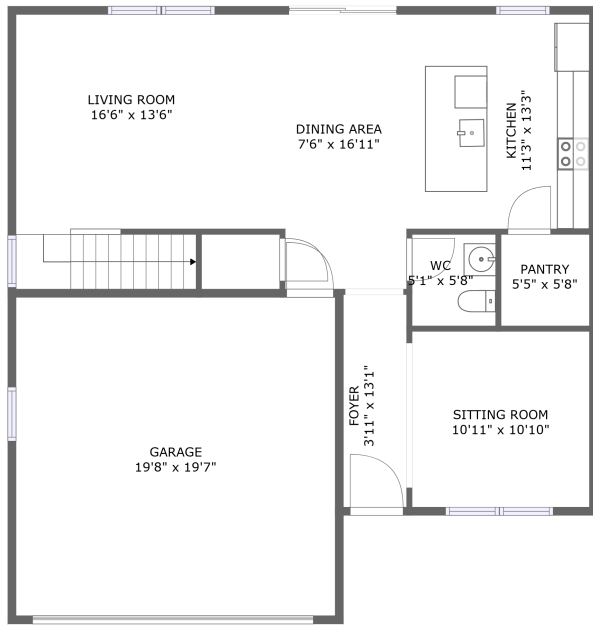
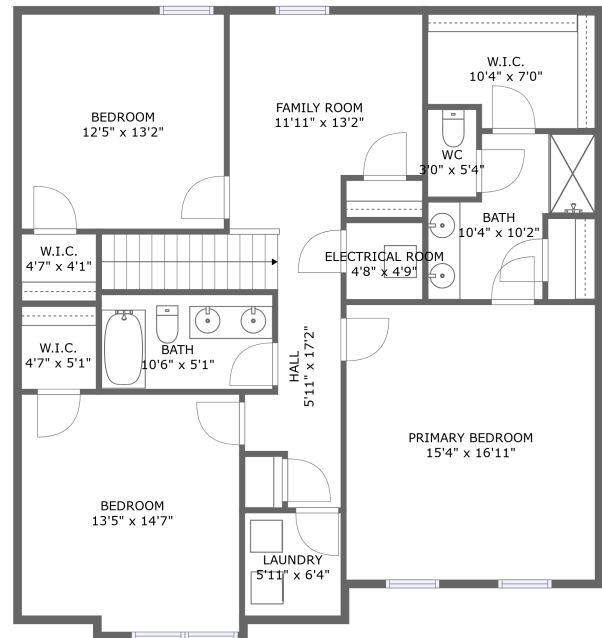


# 11924 Longtown Dr, Midlothian, VA, US




FLOOR 1




FLOOR 2

## Property summary

 **1** Garages

 **3** Bedrooms

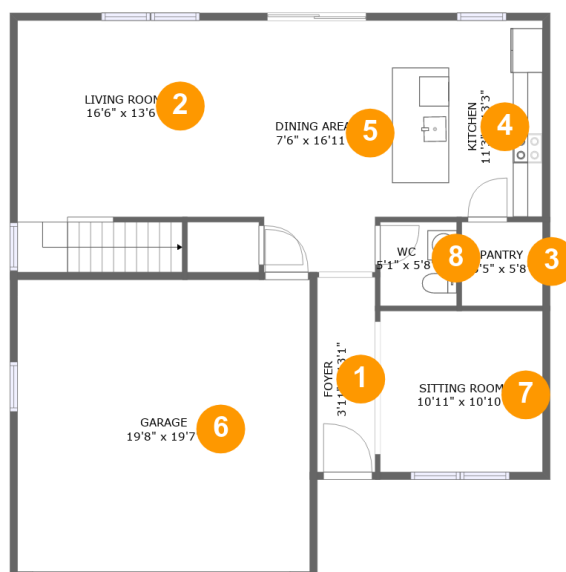
 **2** Bathrooms

 **1** Half baths

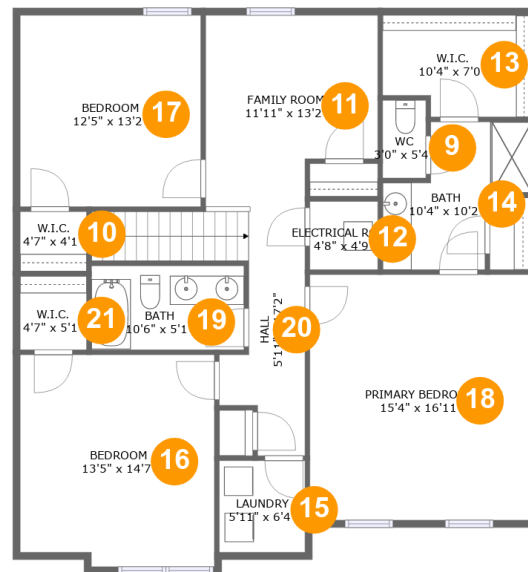
 **2** Floors

 **2,200** Gross living area sqft

 **2,631** Total sqft

**11924 Longtown Dr, Midlothian, VA, US****Room dimensions****Floor 1****Total sqft: 1276    Living area: 867**

#		Dimensions	sqft	Counted as living area
1	Foyer	3'11" x 13'1"	51 sq. ft	Yes
2	Living Room	16'6" x 13'6"	258 sq. ft	Yes
3	Pantry	5'5" x 5'8"	31 sq. ft	Yes
4	Kitchen	11'3" x 13'3"	149 sq. ft	Yes
5	Dining Area	7'6" x 16'11"	127 sq. ft	Yes
6	Garage	19'8" x 19'7"	385 sq. ft	No
7	Sitting Room	10'11" x 10'10"	118 sq. ft	Yes
8	WC	5'1" x 5'8"	29 sq. ft	Yes

**11924 Longtown Dr, Midlothian, VA, US****Room dimensions**

Floor 2

Total sqft: 1355 Living area: 1333

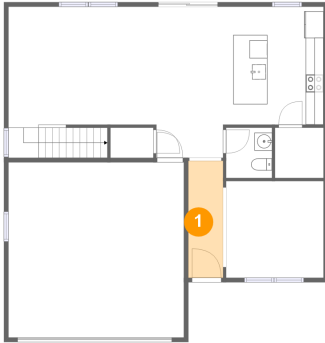
#		Dimensions	sqft	Counted as living area
9	WC	3'0" x 5'4"	16 sq. ft	Yes
10	W.I.C.	4'7" x 4'1"	19 sq. ft	Yes
11	Family Room	11'11" x 13'2"	140 sq. ft	Yes
12	Electrical Room	4'8" x 4'9"	22 sq. ft	No
13	W.I.C.	10'4" x 7'0"	67 sq. ft	Yes
14	Bath	10'4" x 10'2"	74 sq. ft	Yes
15	Laundry	5'11" x 6'4"	37 sq. ft	Yes
16	Bedroom	13'5" x 14'7"	191 sq. ft	Yes
17	Bedroom	12'5" x 13'2"	165 sq. ft	Yes
18	Primary Bedroom	15'4" x 16'11"	259 sq. ft	Yes
19	Bath	10'6" x 5'1"	61 sq. ft	Yes

# 11924 Longtown Dr, Midlothian, VA, US

#		Dimensions	sqft	Counted as living area
20	Hall	5'11" x 17'2"	109 sq. ft	Yes
21	W.I.C.	4'7" x 5'1"	23 sq. ft	Yes

# 11924 Longtown Dr, Midlothian, VA, US

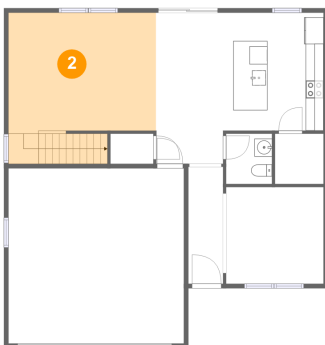
## 1 Floor 1 - Foyer



Dimensions: 3'11" x 13'1"  
Area: 51 sq. ft  
Counted as living area: Yes

Heated: Yes  
Finished: Yes  
Enclosed: Yes  
Contiguous: Yes  
Permitted: Yes  
Wet space: No  
Addition: No  
Conversion: No

## 2 Floor 1 - Living Room



Dimensions: 16'6" x 13'6"  
Area: 258 sq. ft  
Counted as living area: Yes

Heated: Yes  
Finished: Yes  
Enclosed: Yes  
Contiguous: Yes  
Permitted: Yes  
Wet space: No  
Addition: No  
Conversion: No

# 11924 Longtown Dr, Midlothian, VA, US

## 3 Floor 1 - Pantry



Dimensions: 5'5" x 5'8"  
Area: 31 sq. ft  
Counted as living area: Yes

Heated: Yes  
Finished: Yes  
Enclosed: Yes  
Contiguous: Yes  
Permitted: Yes  
Wet space: No  
Addition: No  
Conversion: No

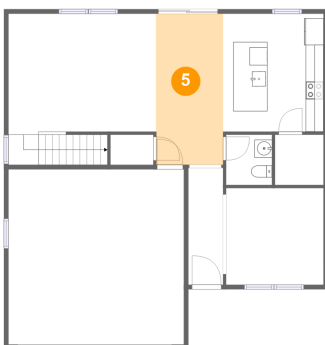
## 4 Floor 1 - Kitchen



Dimensions: 11'3" x 13'3"  
Area: 149 sq. ft  
Counted as living area: Yes

Heated: Yes  
Finished: Yes  
Enclosed: Yes  
Contiguous: Yes  
Permitted: Yes  
Wet space: No  
Addition: No  
Conversion: No

## 5 Floor 1 - Dining Area

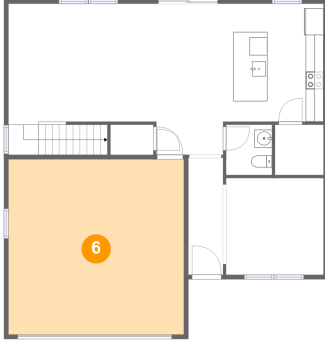


Dimensions: 7'6" x 16'11"  
Area: 127 sq. ft  
Counted as living area: Yes

Heated: Yes  
Finished: Yes  
Enclosed: Yes  
Contiguous: Yes  
Permitted: Yes  
Wet space: No  
Addition: No  
Conversion: No

# 11924 Longtown Dr, Midlothian, VA, US

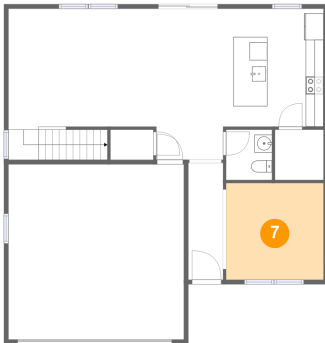
## 6 Floor 1 - Garage



Dimensions: 19'8" x 19'7"  
Area: 385 sq. ft  
Counted as living area: No

Heated: No  
Finished: No  
Enclosed: Yes  
Contiguous: Yes  
Permitted: Yes  
Wet space: No  
Addition: No  
Conversion: No

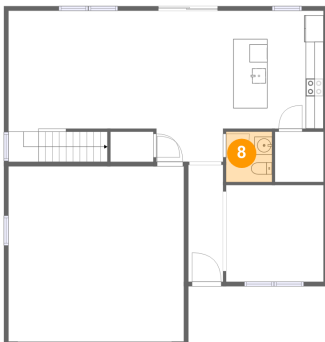
## 7 Floor 1 - Sitting Room



Dimensions: 10'11" x 10'10"  
Area: 118 sq. ft  
Counted as living area: Yes

Heated: Yes  
Finished: Yes  
Enclosed: Yes  
Contiguous: Yes  
Permitted: Yes  
Wet space: No  
Addition: No  
Conversion: No

## 8 Floor 1 - WC

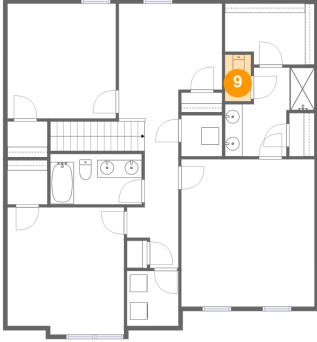


Dimensions: 5'1" x 5'8"  
Area: 29 sq. ft  
Counted as living area: Yes

Heated: Yes  
Finished: Yes  
Enclosed: Yes  
Contiguous: Yes  
Permitted: Yes  
Wet space: Yes  
Addition: No  
Conversion: No

# 11924 Longtown Dr, Midlothian, VA, US

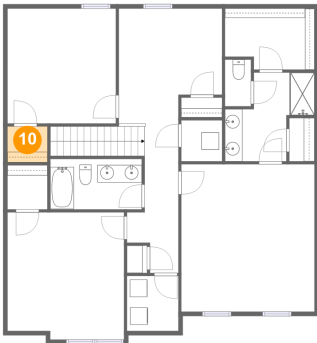
## 9 Floor 2 - WC



Dimensions: 3'0" x 5'4"  
Area: 16 sq. ft  
Counted as living area: Yes

Heated: Yes  
Finished: Yes  
Enclosed: Yes  
Contiguous: Yes  
Permitted: Yes  
Wet space: Yes  
Addition: No  
Conversion: No

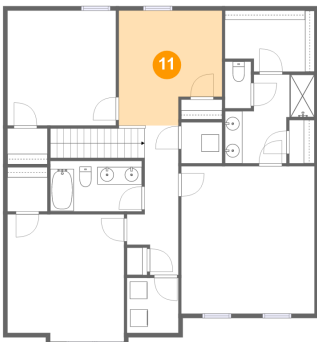
## 10 Floor 2 - W.I.C.



Dimensions: 4'7" x 4'1"  
Area: 19 sq. ft  
Counted as living area: Yes

Heated: Yes  
Finished: Yes  
Enclosed: Yes  
Contiguous: Yes  
Permitted: Yes  
Wet space: No  
Addition: No  
Conversion: No

## 11 Floor 2 - Family Room



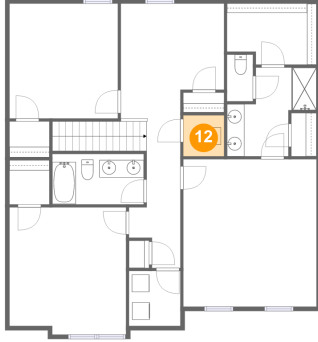
Dimensions: 11'11" x 13'2"  
Area: 140 sq. ft  
Counted as living area: Yes

Heated: Yes  
Finished: Yes  
Enclosed: Yes  
Contiguous: Yes  
Permitted: Yes  
Wet space: No  
Addition: No  
Conversion: No



# 11924 Longtown Dr, Midlothian, VA, US

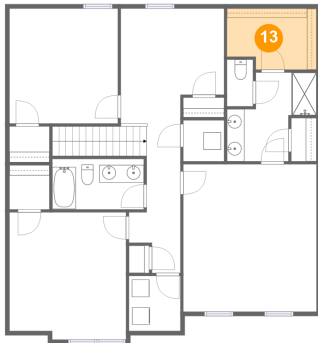
## 12 Floor 2 - Electrical Room



Dimensions: 4'8" x 4'9"  
Area: 22 sq. ft  
Counted as living area: No

Heated: No  
Finished: No  
Enclosed: Yes  
Contiguous: Yes  
Permitted: Yes  
Wet space: No  
Addition: No  
Conversion: No

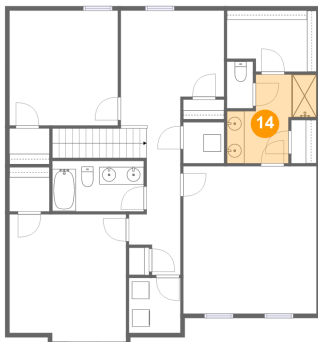
## 13 Floor 2 - W.I.C.



Dimensions: 10'4" x 7'0"  
Area: 67 sq. ft  
Counted as living area: Yes

Heated: Yes  
Finished: Yes  
Enclosed: Yes  
Contiguous: Yes  
Permitted: Yes  
Wet space: No  
Addition: No  
Conversion: No

## 14 Floor 2 - Bath

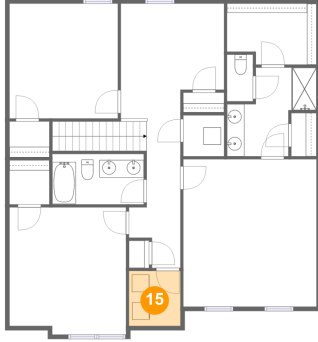


Dimensions: 10'4" x 10'2"  
Area: 74 sq. ft  
Counted as living area: Yes

Heated: Yes  
Finished: Yes  
Enclosed: Yes  
Contiguous: Yes  
Permitted: Yes  
Wet space: Yes  
Addition: No  
Conversion: No

# 11924 Longtown Dr, Midlothian, VA, US

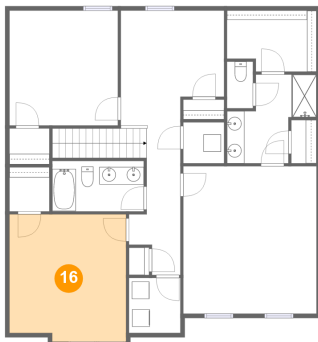
## 15 Floor 2 - Laundry



Dimensions: 5'11" x 6'4"  
Area: 37 sq. ft  
Counted as living area: Yes

Heated: Yes  
Finished: Yes  
Enclosed: Yes  
Contiguous: Yes  
Permitted: Yes  
Wet space: No  
Addition: No  
Conversion: No

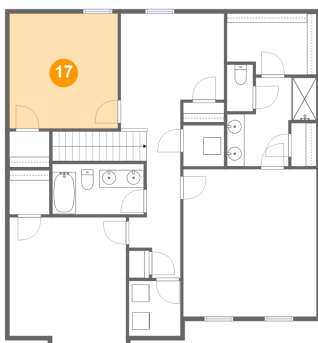
## 16 Floor 2 - Bedroom



Dimensions: 13'5" x 14'7"  
Area: 191 sq. ft  
Counted as living area: Yes

Heated: Yes  
Finished: Yes  
Enclosed: Yes  
Contiguous: Yes  
Permitted: Yes  
Wet space: No  
Addition: No  
Conversion: No

## 17 Floor 2 - Bedroom

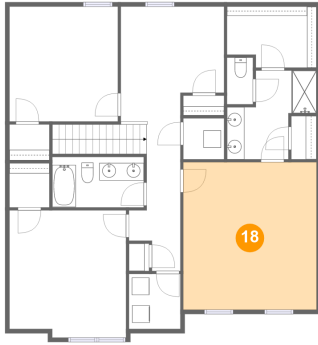


Dimensions: 12'5" x 13'2"  
Area: 165 sq. ft  
Counted as living area: Yes

Heated: Yes  
Finished: Yes  
Enclosed: Yes  
Contiguous: Yes  
Permitted: Yes  
Wet space: No  
Addition: No  
Conversion: No

# 11924 Longtown Dr, Midlothian, VA, US

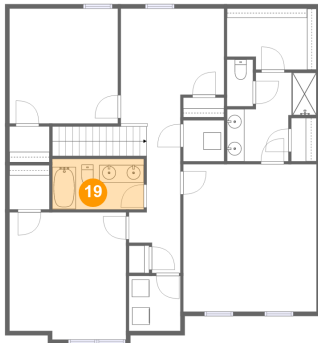
## 18 Floor 2 - Primary Bedroom



Dimensions: 15'4" x 16'11"  
Area: 259 sq. ft  
Counted as living area: Yes

Heated: Yes  
Finished: Yes  
Enclosed: Yes  
Contiguous: Yes  
Permitted: Yes  
Wet space: No  
Addition: No  
Conversion: No

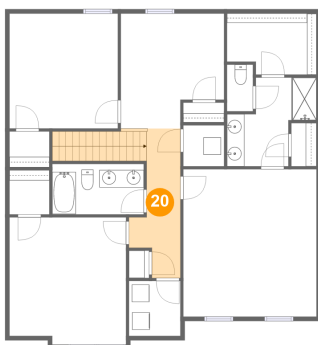
## 19 Floor 2 - Bath



Dimensions: 10'6" x 5'1"  
Area: 61 sq. ft  
Counted as living area: Yes

Heated: Yes  
Finished: Yes  
Enclosed: Yes  
Contiguous: Yes  
Permitted: Yes  
Wet space: Yes  
Addition: No  
Conversion: No

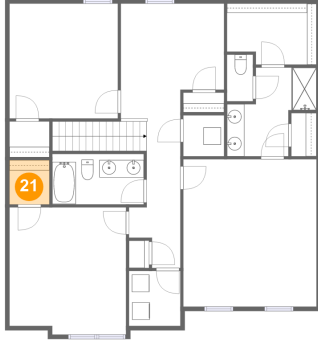
## 20 Floor 2 - Hall



Dimensions: 5'11" x 17'2"  
Area: 109 sq. ft  
Counted as living area: Yes

Heated: Yes  
Finished: Yes  
Enclosed: Yes  
Contiguous: Yes  
Permitted: Yes  
Wet space: No  
Addition: No  
Conversion: No

**21** Floor 2 - W.I.C.



**Dimensions:** 4'7" x 5'1"  
**Area:** 23 sq. ft  
**Counted as living area:** Yes

**Heated:** Yes  
**Finished:** Yes  
**Enclosed:** Yes  
**Contiguous:** Yes  
**Permitted:** Yes  
**Wet space:** No  
**Addition:** No  
**Conversion:** No