

3983 St Thomas St

Port Coquitlam BC V3B 2Z3

Main Level Area: 1,030 SQ.FT.

Upper Level Area: 1,655 SQ.FT.

Total Area 2,685 SQ.FT.

Workshop Area: 1,710 SQ.FT.

4



BEDROOMS

5

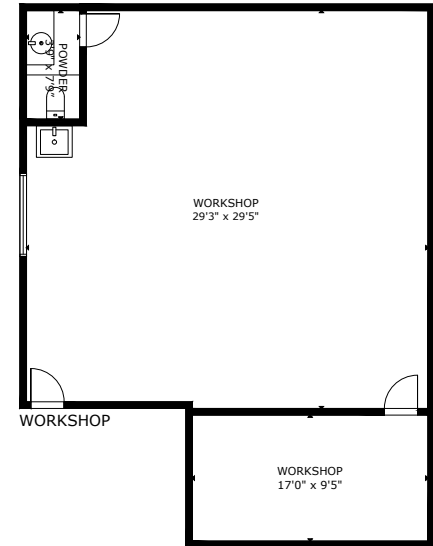
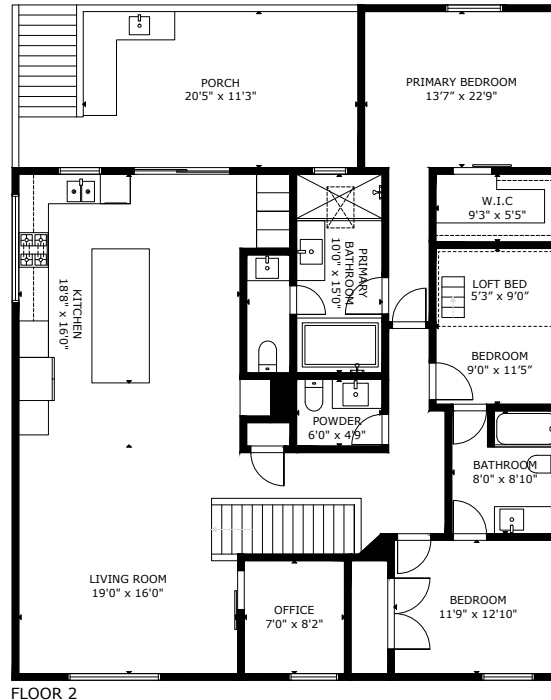
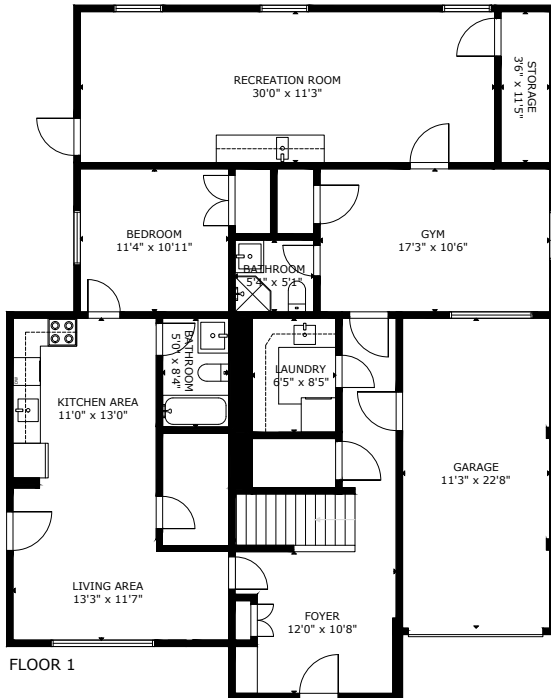


BATHROOMS

2,685



TOTAL SQ.FT.



3983 St Thomas Street, Port Coquitlam V3B 2Z3

Measurements are approximate and may not be to scale.
The floor plan illustration is not suitable for construction/architectural purposes.



3D IMMERSIVE
Tours Photos Floor Plans

Professionally measured by: 3D Immersive Marketing Ltd.

Lead Floor Planner: *Sara Alexander*
Quality Assurance: *Janice Graham*