



Home report


803 London St,Cobourg,ON,CA




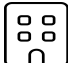
Property summary


 **1** Garages


 **3** Bedrooms

 **3** Bathrooms

 **0** Half baths

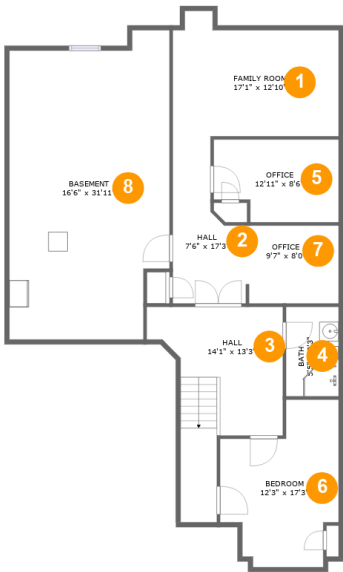
 **2** Floors

 **2,494** Gross living area sqft

 **3,878** Total sqft

Home report

803 London St,Cobourg,ON,CA



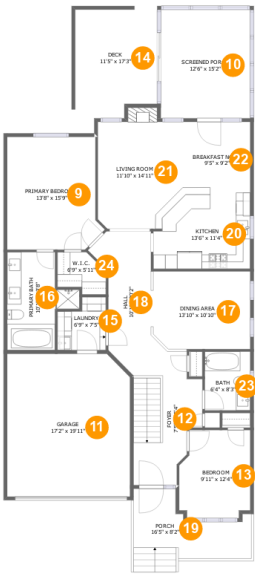
Room dimensions

Floor 1 Total sqft: 1505 Living area: 993

#		Dimensions	sqft	Counted as living area
1	Family Room	17'1" x 12'10"	193 sq. ft	Yes
2	Hall	7'6" x 17'3"	97 sq. ft	Yes
3	Hall	14'1" x 13'3"	187 sq. ft	Yes
4	Bath	5'5" x 9'3"	50 sq. ft	Yes
5	Office	12'11" x 8'6"	101 sq. ft	Yes
6	Bedroom	12'3" x 17'3"	165 sq. ft	Yes
7	Office	9'7" x 8'0"	76 sq. ft	Yes
8	Basement	16'6" x 31'11"	480 sq. ft	No

Home report

803 London St,Cobourg,ON,CA



Room dimensions

Floor 2 Total sqft: 2373 Living area: 1501

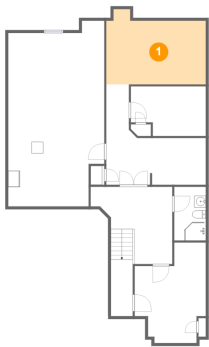
#		Dimensions	sqft	Counted as living area
9	Primary Bedroom	13'8" x 15'9"	195 sq. ft	Yes
10	Screened Porch	12'6" x 15'2"	190 sq. ft	No
11	Garage	17'2" x 19'11"	337 sq. ft	No
12	Foyer	7'5" x 15'4"	124 sq. ft	Yes
13	Bedroom	9'11" x 12'4"	113 sq. ft	Yes
14	Deck	11'5" x 17'3"	170 sq. ft	No
15	Laundry	6'9" x 7'5"	43 sq. ft	Yes
16	Primary Bath	10'1" x 13'8"	101 sq. ft	Yes
17	Dining Area	13'10" x 10'10"	150 sq. ft	Yes
18	Hall	10'1" x 20'2"	141 sq. ft	Yes
19	Porch	16'5" x 8'2"	125 sq. ft	No

Home report

803 London St,Cobourg,ON,CA

#		Dimensions	sqft	Counted as living area
20	Kitchen	13'6" x 11'4"	144 sq. ft	Yes
21	Living Room	11'10" x 14'11"	170 sq. ft	Yes
22	Breakfast Nook	9'5" x 9'2"	87 sq. ft	Yes
23	Bath	6'4" x 8'3"	52 sq. ft	Yes
24	W.I.C.	6'9" x 5'11"	33 sq. ft	Yes

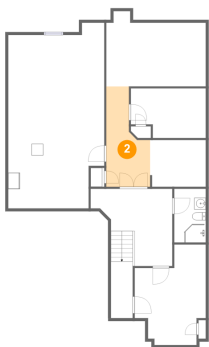
1 Floor 1 - Family Room



Dimensions: 17'1" x 12'10"
Area: 193 sq. ft
Counted as living area: Yes

Heated: Yes
Finished: Yes
Enclosed: Yes
Contiguous: Yes
Permitted: Yes
Wet space: No
Addition: No
Conversion: No

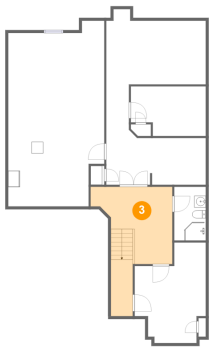
2 Floor 1 - Hall



Dimensions: 7'6" x 17'3"
Area: 97 sq. ft
Counted as living area: Yes

Heated: Yes
Finished: Yes
Enclosed: Yes
Contiguous: Yes
Permitted: Yes
Wet space: No
Addition: No
Conversion: No

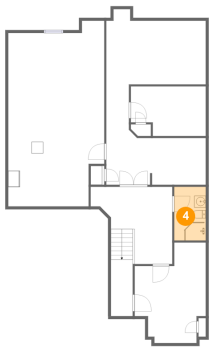
3 Floor 1 - Hall



Dimensions: 14'1" x 13'3"
Area: 187 sq. ft
Counted as living area: Yes

Heated: Yes
Finished: Yes
Enclosed: Yes
Contiguous: Yes
Permitted: Yes
Wet space: No
Addition: No
Conversion: No

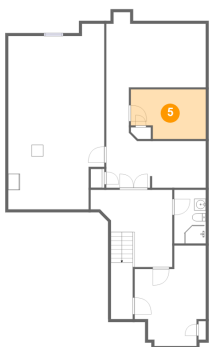
4 Floor 1 - Bath



Dimensions: 5'5" x 9'3"
Area: 50 sq. ft
Counted as living area: Yes

Heated: Yes
Finished: Yes
Enclosed: Yes
Contiguous: Yes
Permitted: Yes
Wet space: Yes
Addition: No
Conversion: No

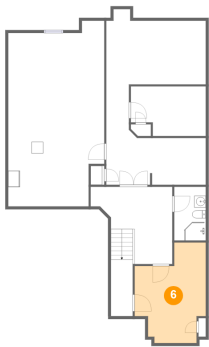
5 Floor 1 - Office



Dimensions: 12'11" x 8'6"
Area: 101 sq. ft
Counted as living area: Yes

Heated: Yes
Finished: Yes
Enclosed: Yes
Contiguous: Yes
Permitted: Yes
Wet space: No
Addition: No
Conversion: No

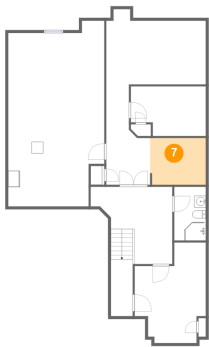
6 Floor 1 - Bedroom



Dimensions: 12'3" x 17'3"
Area: 165 sq. ft
Counted as living area: Yes

Heated: Yes
Finished: Yes
Enclosed: Yes
Contiguous: Yes
Permitted: Yes
Wet space: No
Addition: No
Conversion: No

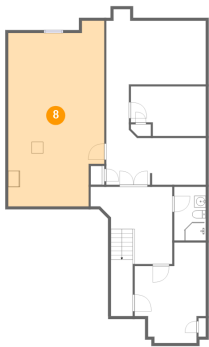
7 Floor 1 - Office



Dimensions: 9'7" x 8'0"
Area: 76 sq. ft
Counted as living area: Yes

Heated: Yes
Finished: Yes
Enclosed: Yes
Contiguous: Yes
Permitted: Yes
Wet space: No
Addition: No
Conversion: No

8 Floor 1 - Basement



Dimensions: 16'6" x 31'11"
Area: 480 sq. ft
Counted as living area: No

Heated: No
Finished: No
Enclosed: Yes
Contiguous: Yes
Permitted: Yes
Wet space: No
Addition: No
Conversion: No

9 Floor 2 - Primary Bedroom



Dimensions: 13'8" x 15'9"
Area: 195 sq. ft
Counted as living area: Yes

Heated: Yes
Finished: Yes
Enclosed: Yes
Contiguous: Yes
Permitted: Yes
Wet space: No
Addition: No
Conversion: No

10 Floor 2 - Screened Porch



Dimensions: 12'6" x 15'2"
Area: 190 sq. ft
Counted as living area: No

Heated: No
Finished: Yes
Enclosed: No
Contiguous: Yes
Permitted: Yes
Wet space: No
Addition: No
Conversion: No

11 Floor 2 - Garage



Dimensions: 17'2" x 19'11"
Area: 337 sq. ft
Counted as living area: No

Heated: No
Finished: No
Enclosed: Yes
Contiguous: Yes
Permitted: Yes
Wet space: No
Addition: No
Conversion: No

12 Floor 2 - Foyer



Dimensions: 7'5" x 15'4"
Area: 124 sq. ft
Counted as living area: Yes

Heated: Yes
Finished: Yes
Enclosed: Yes
Contiguous: Yes
Permitted: Yes
Wet space: No
Addition: No
Conversion: No

13 Floor 2 - Bedroom



Dimensions: 9'11" x 12'4"
Area: 113 sq. ft
Counted as living area: Yes

Heated: Yes
Finished: Yes
Enclosed: Yes
Contiguous: Yes
Permitted: Yes
Wet space: No
Addition: No
Conversion: No

14 Floor 2 - Deck



Dimensions: 11'5" x 17'3"
Area: 170 sq. ft
Counted as living area: No

Heated: No
Finished: Yes
Enclosed: No
Contiguous: Yes
Permitted: Yes
Wet space: No
Addition: No
Conversion: No

15 Floor 2 - Laundry



Dimensions: 6'9" x 7'5"
Area: 43 sq. ft
Counted as living area: Yes

Heated: Yes
Finished: Yes
Enclosed: Yes
Contiguous: Yes
Permitted: Yes
Wet space: No
Addition: No
Conversion: No

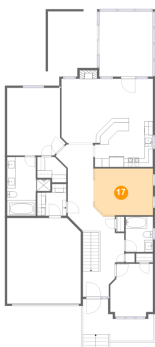
16 Floor 2 - Primary Bath



Dimensions: 10'1" x 13'8"
Area: 101 sq. ft
Counted as living area: Yes

Heated: Yes
Finished: Yes
Enclosed: Yes
Contiguous: Yes
Permitted: Yes
Wet space: Yes
Addition: No
Conversion: No

17 Floor 2 - Dining Area



Dimensions: 13'10" x 10'10"
Area: 150 sq. ft
Counted as living area: Yes

Heated: Yes
Finished: Yes
Enclosed: Yes
Contiguous: Yes
Permitted: Yes
Wet space: No
Addition: No
Conversion: No

18 Floor 2 - Hall



Dimensions: 10'1" x 20'2"
Area: 141 sq. ft
Counted as living area: Yes

Heated: Yes
Finished: Yes
Enclosed: Yes
Contiguous: Yes
Permitted: Yes
Wet space: No
Addition: No
Conversion: No

19 Floor 2 - Porch



Dimensions: 16'5" x 8'2"
Area: 125 sq. ft
Counted as living area: No

Heated: No
Finished: Yes
Enclosed: No
Contiguous: Yes
Permitted: Yes
Wet space: No
Addition: No
Conversion: No

20 Floor 2 - Kitchen



Dimensions: 13'6" x 11'4"
Area: 144 sq. ft
Counted as living area: Yes

Heated: Yes
Finished: Yes
Enclosed: Yes
Contiguous: Yes
Permitted: Yes
Wet space: No
Addition: No
Conversion: No

21 Floor 2 - Living Room



Dimensions: 11'10" x 14'11"
Area: 170 sq. ft
Counted as living area: Yes

Heated: Yes
Finished: Yes
Enclosed: Yes
Contiguous: Yes
Permitted: Yes
Wet space: No
Addition: No
Conversion: No

22 Floor 2 - Breakfast Nook



Dimensions: 9'5" x 9'2"
Area: 87 sq. ft
Counted as living area: Yes

Heated: Yes
Finished: Yes
Enclosed: Yes
Contiguous: Yes
Permitted: Yes
Wet space: No
Addition: No
Conversion: No

23 Floor 2 - Bath



Dimensions: 6'4" x 8'3"
Area: 52 sq. ft
Counted as living area: Yes

Heated: Yes
Finished: Yes
Enclosed: Yes
Contiguous: Yes
Permitted: Yes
Wet space: Yes
Addition: No
Conversion: No

24 Floor 2 - W.I.C.



Dimensions: 6'9" x 5'11"
Area: 33 sq. ft
Counted as living area: Yes

Heated: Yes
Finished: Yes
Enclosed: Yes
Contiguous: Yes
Permitted: Yes
Wet space: No
Addition: No
Conversion: No