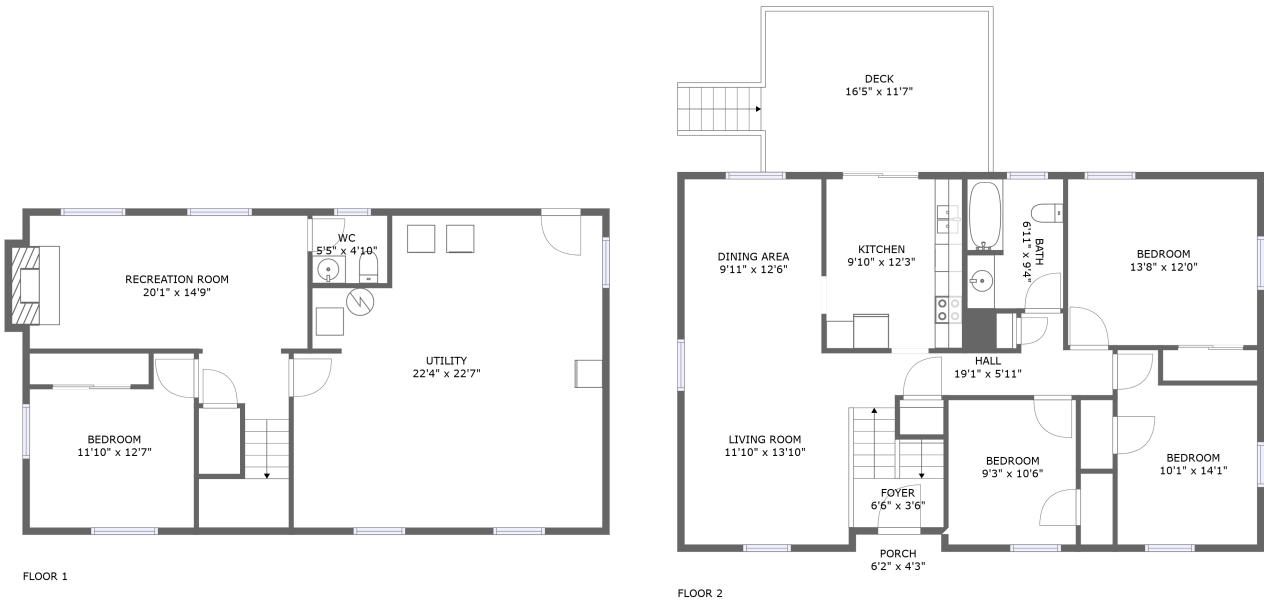


Home report

3582 Berryhill Drive, Green Valley, Cave Spring, Roanoke,
Roanoke County, Virginia, United States, 24018



Total Area: 1662 sq. ft

Floor 1: 508 sq. ft, Floor 2: 1154 sq. ft

Excluded: Utility 490 sq. ft, Fireplace 9 sq. ft, Outdoor Porch 26 sq. ft, Outdoor Deck 207 sq. ft

Property summary

 **2** Floors

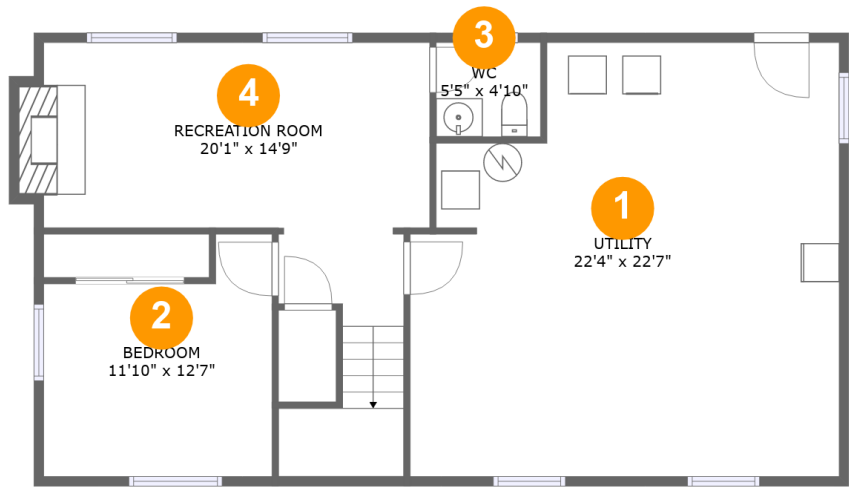
 **4** Bedrooms

 **1** Bathrooms

 **1** Half baths

Home report

3582 Berryhill Drive, Green Valley, Cave Spring, Roanoke,
Roanoke County, Virginia, United States, 24018



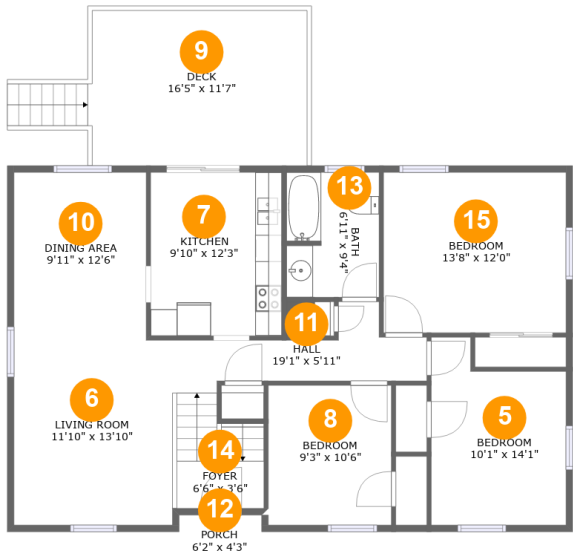
Room dimensions

Floor 1 Total:508sqft Excluded: 499sqft

| # | | Max Dimensions | sqft | Included |
|---|-----------------|----------------|------------|----------|
| 1 | Utility | 22'4" x 22'7" | 459 sq. ft | No |
| 2 | Bedroom | 11'10" x 12'7" | 126 sq. ft | Yes |
| 3 | WC | 5'5" x 4'10" | 27 sq. ft | Yes |
| 4 | Recreation Room | 20'1" x 14'9" | 266 sq. ft | Yes |

Home report

3582 Berryhill Drive, Green Valley, Cave Spring, Roanoke,
Roanoke County, Virginia, United States, 24018



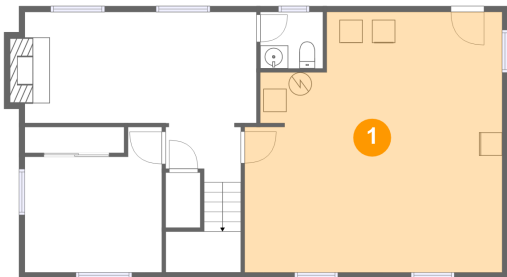
Room dimensions

Floor 2 Total:1154sqft Excluded: 233sqft

| # | | Max Dimensions | sqft | Included |
|----|-------------|-----------------|------------|----------|
| 5 | Bedroom | 10'1" x 14'1" | 124 sq. ft | Yes |
| 6 | Living Room | 11'10" x 13'10" | 164 sq. ft | Yes |
| 7 | Kitchen | 9'10" x 12'3" | 120 sq. ft | Yes |
| 8 | Bedroom | 9'3" x 10'6" | 96 sq. ft | Yes |
| 9 | Deck | 16'5" x 11'7" | 207 sq. ft | No |
| 10 | Dining Area | 9'11" x 12'6" | 125 sq. ft | Yes |
| 11 | Hall | 19'1" x 5'11" | 98 sq. ft | Yes |
| 12 | Porch | 6'2" x 4'3" | 26 sq. ft | No |
| 13 | Bath | 6'11" x 9'4" | 64 sq. ft | Yes |
| 14 | Foyer | 6'6" x 3'6" | 24 sq. ft | Yes |
| 15 | Bedroom | 13'8" x 12'0" | 164 sq. ft | Yes |

3582 Berryhill Drive, Green Valley, Cave Spring, Roanoke,
Roanoke County, Virginia, United States, 24018

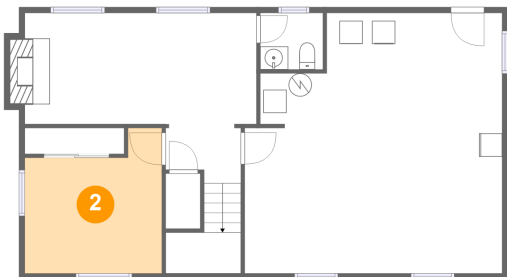
1 Floor 1 - Utility



Max Dimensions: 22'4" x 22'7"
Calculated Area: 459 sq. ft
Included: No

Heated: Yes
Finished: No
Enclosed: Yes
Contiguous: Yes
Permitted: Yes
Wet space: No
Addition: No
Conversion: No

2 Floor 1 - Bedroom

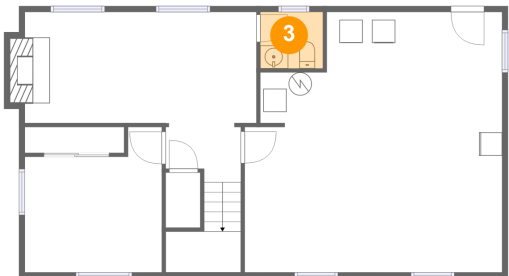


Max Dimensions: 11'10" x 12'7"
Calculated Area: 126 sq. ft
Included: Yes

Heated: Yes
Finished: Yes
Enclosed: Yes
Contiguous: Yes
Permitted: Yes
Wet space: No
Addition: No
Conversion: No

3582 Berryhill Drive, Green Valley, Cave Spring, Roanoke,
Roanoke County, Virginia, United States, 24018

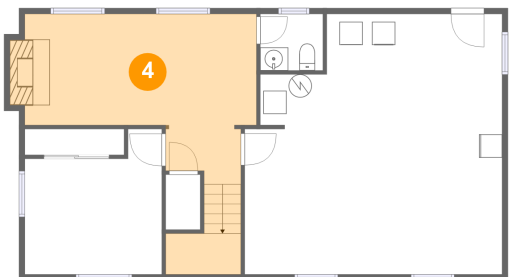
3 Floor 1 - WC



Max Dimensions: 5'5" x 4'10"
Calculated Area: 27 sq. ft
Included: Yes

Heated: Yes
Finished: Yes
Enclosed: Yes
Contiguous: Yes
Permitted: Yes
Wet space: Yes
Addition: No
Conversion: No

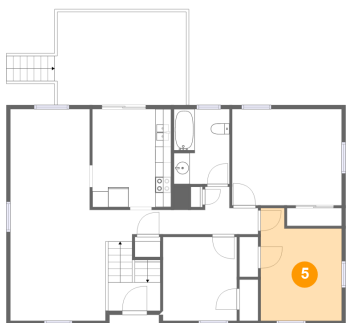
4 Floor 1 - Recreation Room



Max Dimensions: 20'1" x 14'9"
Calculated Area: 266 sq. ft
Included: Yes

Heated: Yes
Finished: Yes
Enclosed: Yes
Contiguous: Yes
Permitted: Yes
Wet space: No
Addition: No
Conversion: No

5 Floor 2 - Bedroom

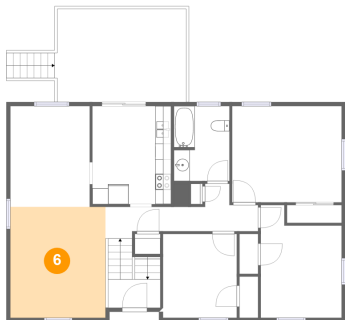


Max Dimensions: 10'1" x 14'1"
Calculated Area: 124 sq. ft
Included: Yes

Heated: Yes
Finished: Yes
Enclosed: Yes
Contiguous: Yes
Permitted: Yes
Wet space: No
Addition: No
Conversion: No

3582 Berryhill Drive, Green Valley, Cave Spring, Roanoke,
Roanoke County, Virginia, United States, 24018

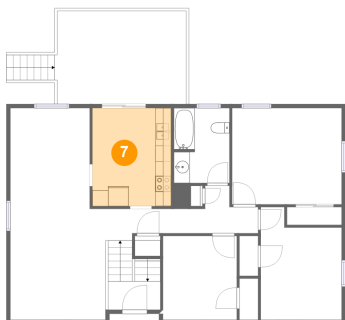
6 Floor 2 - Living Room



Max Dimensions: 11'10" x 13'10"
Calculated Area: 164 sq. ft
Included: Yes

Heated: Yes
Finished: Yes
Enclosed: Yes
Contiguous: Yes
Permitted: Yes
Wet space: No
Addition: No
Conversion: No

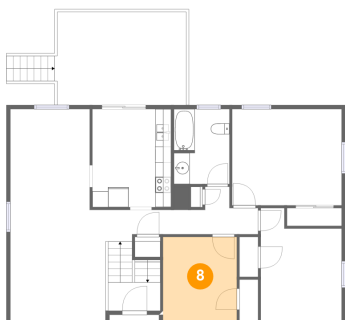
7 Floor 2 - Kitchen



Max Dimensions: 9'10" x 12'3"
Calculated Area: 120 sq. ft
Included: Yes

Heated: Yes
Finished: Yes
Enclosed: Yes
Contiguous: Yes
Permitted: Yes
Wet space: No
Addition: No
Conversion: No

8 Floor 2 - Bedroom

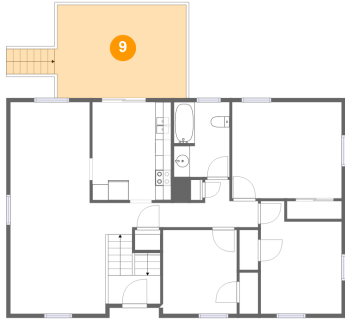


Max Dimensions: 9'3" x 10'6"
Calculated Area: 96 sq. ft
Included: Yes

Heated: Yes
Finished: Yes
Enclosed: Yes
Contiguous: Yes
Permitted: Yes
Wet space: No
Addition: No
Conversion: No

3582 Berryhill Drive, Green Valley, Cave Spring, Roanoke,
Roanoke County, Virginia, United States, 24018

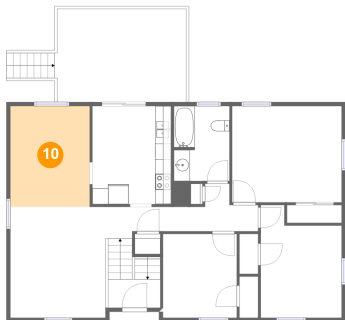
9 Floor 2 - Deck



Max Dimensions: 16'5" x 11'7"
Calculated Area: 207 sq. ft
Included: No

Heated: No
Finished: Yes
Enclosed: No
Contiguous: Yes
Permitted: Yes
Wet space: No
Addition: No
Conversion: No

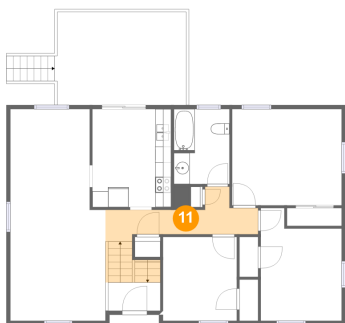
10 Floor 2 - Dining Area



Max Dimensions: 9'11" x 12'6"
Calculated Area: 125 sq. ft
Included: Yes

Heated: Yes
Finished: Yes
Enclosed: Yes
Contiguous: Yes
Permitted: Yes
Wet space: No
Addition: No
Conversion: No

11 Floor 2 - Hall



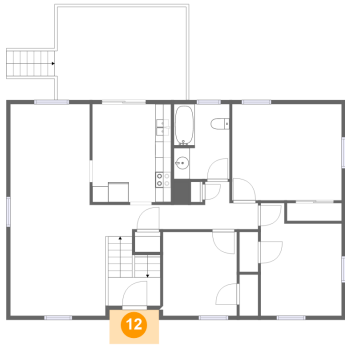
Max Dimensions: 19'1" x 5'11"
Calculated Area: 98 sq. ft
Included: Yes

Heated: Yes
Finished: Yes
Enclosed: Yes
Contiguous: Yes
Permitted: Yes
Wet space: No
Addition: No
Conversion: No

Home report

3582 Berryhill Drive, Green Valley, Cave Spring, Roanoke,
Roanoke County, Virginia, United States, 24018

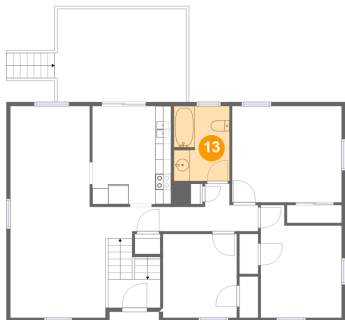
12 Floor 2 - Porch



Max Dimensions: 6'2" x 4'3"
Calculated Area: 26 sq. ft
Included: No

Heated: No
Finished: Yes
Enclosed: No
Contiguous: Yes
Permitted: Yes
Wet space: No
Addition: No
Conversion: No

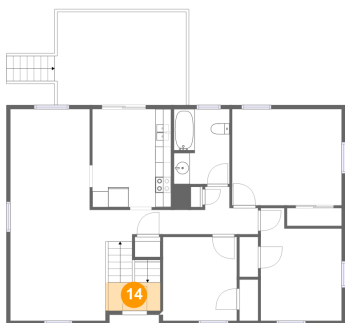
13 Floor 2 - Bath



Max Dimensions: 6'11" x 9'4"
Calculated Area: 64 sq. ft
Included: Yes

Heated: Yes
Finished: Yes
Enclosed: Yes
Contiguous: Yes
Permitted: Yes
Wet space: Yes
Addition: No
Conversion: No

14 Floor 2 - Foyer

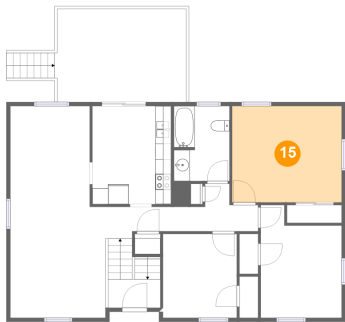


Max Dimensions: 6'6" x 3'6"
Calculated Area: 24 sq. ft
Included: Yes

Heated: Yes
Finished: Yes
Enclosed: Yes
Contiguous: Yes
Permitted: Yes
Wet space: No
Addition: No
Conversion: No

3582 Berryhill Drive, Green Valley, Cave Spring, Roanoke,
Roanoke County, Virginia, United States, 24018

15 Floor 2 - Bedroom



Max Dimensions: 13'8" x 12'0"
Calculated Area: 164 sq. ft
Included: Yes

Heated: Yes
Finished: Yes
Enclosed: Yes
Contiguous: Yes
Permitted: Yes
Wet space: No
Addition: No
Conversion: No