

Home report

9561 Upper Craigs Creek Rd, Catawba, Craig County, Virginia,
United States, 24070




Total Area: 2028 sq. ft


Floor 1: 895 sq. ft, Floor 2: 1133 sq. ft

Excluded: Utility 235 sq. ft, Carport 796 sq. ft, Undefined 6 sq. ft, Fireplace 8 sq. ft, Porch 219 sq. ft, Deck 570 sq. ft, Walls: 137 sq. ft

Property summary

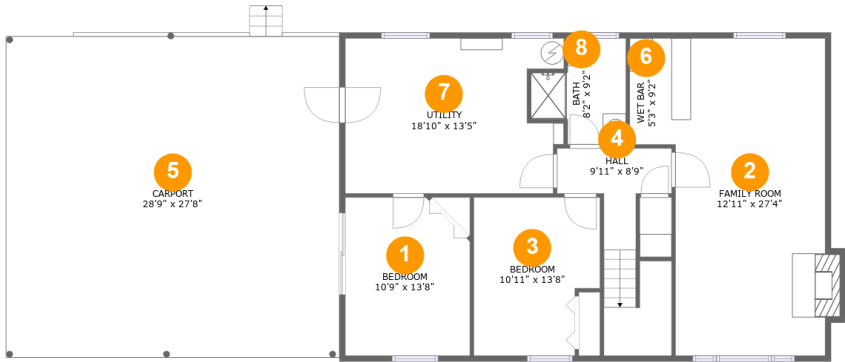
 2 Floors

 5 Bedrooms

 2 Bathrooms

Home report

9561 Upper Craigs Creek Rd, Catawba, Craig County, Virginia,
United States, 24070



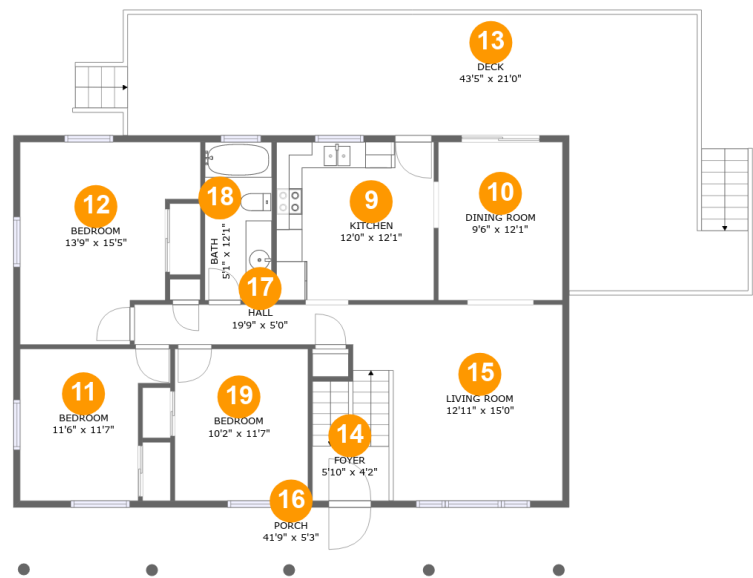
Room dimensions

Floor 1 Total:895sqft Excluded: 1045sqft

#		Max Dimensions	sqft	Included
1	Bedroom	10'9" x 13'8"	140 sq. ft	Yes
2	Family Room	12'11" x 27'4"	348 sq. ft	Yes
3	Bedroom	10'11" x 13'8"	136 sq. ft	Yes
4	Hall	9'11" x 8'9"	101 sq. ft	Yes
5	Carport	28'9" x 27'8"	796 sq. ft	No
6	Wet Bar	5'3" x 9'2"	48 sq. ft	Yes
7	Utility	18'10" x 13'5"	233 sq. ft	No
8	Bath	8'2" x 9'2"	59 sq. ft	Yes

Home report

9561 Upper Craigs Creek Rd, Catawba, Craig County, Virginia,
United States, 24070



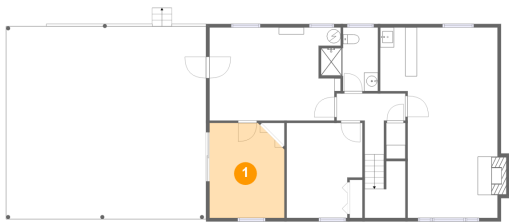
Room dimensions

Floor 2 Total:1133sqft Excluded: 789sqft

#		Max Dimensions	sqft	Included
9	Kitchen	12'0" x 12'1"	145 sq. ft	Yes
10	Dining Room	9'6" x 12'1"	114 sq. ft	Yes
11	Bedroom	11'6" x 11'7"	111 sq. ft	Yes
12	Bedroom	13'9" x 15'5"	174 sq. ft	Yes
13	Deck	43'5" x 21'0"	570 sq. ft	No
14	Foyer	5'10" x 4'2"	57 sq. ft	Yes
15	Living Room	12'11" x 15'0"	193 sq. ft	Yes
16	Porch	41'9" x 5'3"	219 sq. ft	No
17	Hall	19'9" x 5'0"	69 sq. ft	Yes
18	Bath	5'1" x 12'1"	62 sq. ft	Yes
19	Bedroom	10'2" x 11'7"	118 sq. ft	Yes

9561 Upper Craigs Creek Rd, Catawba, Craig County, Virginia,
United States, 24070

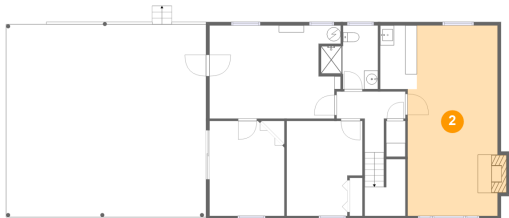
1 Floor 1 - Bedroom



Max Dimensions: 10'9" x 13'8"
Calculated Area: 140 sq. ft
Included: No

Heated: Yes
Finished: Yes
Enclosed: Yes
Contiguous: No
Permitted: Yes
Wet space: No
Addition: No
Conversion: No

2 Floor 1 - Family Room

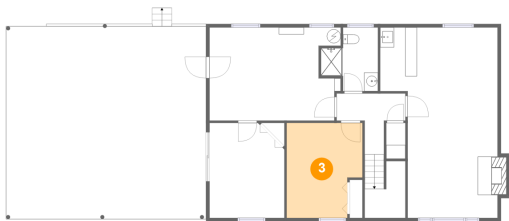


Max Dimensions: 12'11" x 27'4"
Calculated Area: 348 sq. ft
Included: Yes

Heated: Yes
Finished: Yes
Enclosed: Yes
Contiguous: Yes
Permitted: Yes
Wet space: No
Addition: No
Conversion: No

9561 Upper Craigs Creek Rd, Catawba, Craig County, Virginia,
United States, 24070

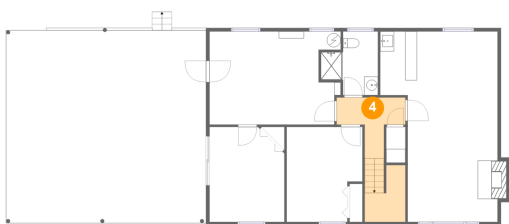
3 Floor 1 - Bedroom



Max Dimensions: 10'11" x 13'8"
Calculated Area: 136 sq. ft
Included: Yes

Heated: Yes
Finished: Yes
Enclosed: Yes
Contiguous: Yes
Permitted: Yes
Wet space: No
Addition: No
Conversion: No

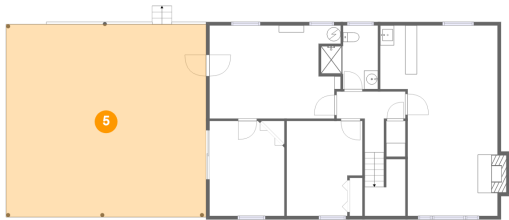
4 Floor 1 - Hall



Max Dimensions: 9'11" x 8'9"
Calculated Area: 101 sq. ft
Included: Yes

Heated: Yes
Finished: Yes
Enclosed: Yes
Contiguous: Yes
Permitted: Yes
Wet space: No
Addition: No
Conversion: No

5 Floor 1 - Carport

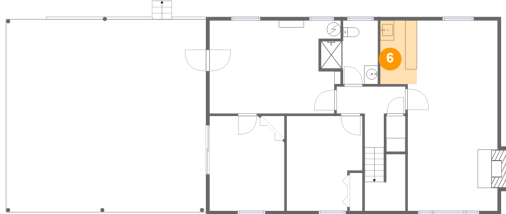


Max Dimensions: 28'9" x 27'8"
Calculated Area: 796 sq. ft
Included: No

Heated: No
Finished: Yes
Enclosed: No
Contiguous: Yes
Permitted: Yes
Wet space: No
Addition: No
Conversion: No

9561 Upper Craigs Creek Rd, Catawba, Craig County, Virginia,
United States, 24070

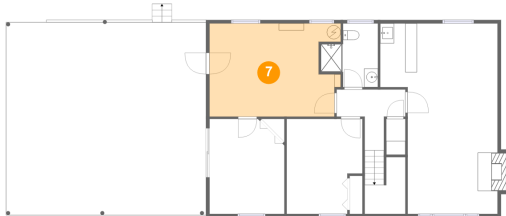
6 Floor 1 - Wet Bar



Max Dimensions: 5'3" x 9'2"
Calculated Area: 48 sq. ft
Included: Yes

Heated: Yes
Finished: Yes
Enclosed: Yes
Contiguous: Yes
Permitted: Yes
Wet space: No
Addition: No
Conversion: No

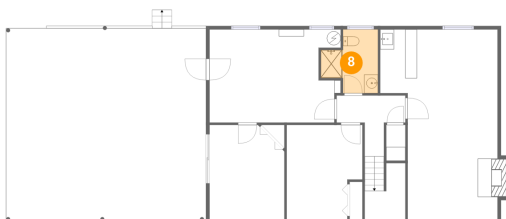
7 Floor 1 - Utility



Max Dimensions: 18'10" x
13'5"
Calculated Area: 233 sq. ft
Included: No

Heated: Yes
Finished: No
Enclosed: Yes
Contiguous:
Yes
Permitted: Yes
Wet space: No
Addition: No
Conversion: No

8 Floor 1 - Bath

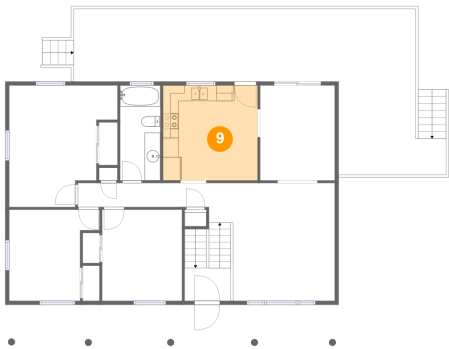


Max Dimensions: 8'2" x 9'2"
Calculated Area: 59 sq. ft
Included: Yes

Heated: Yes
Finished: Yes
Enclosed: Yes
Contiguous: Yes
Permitted: Yes
Wet space: Yes
Addition: No
Conversion: No

9561 Upper Craigs Creek Rd, Catawba, Craig County, Virginia,
United States, 24070

9 Floor 2 - Kitchen



Max Dimensions: 12'0" x 12'1"
Calculated Area: 145 sq. ft
Included: Yes

Heated: Yes
Finished: Yes
Enclosed: Yes
Contiguous: Yes
Permitted: Yes
Wet space: No
Addition: No
Conversion: No

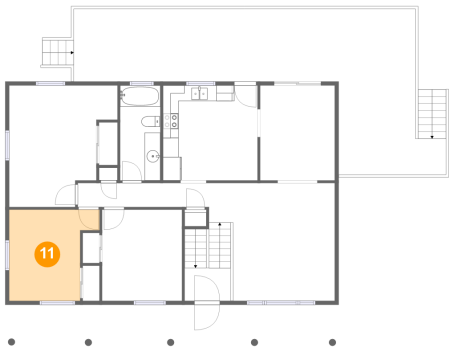
10 Floor 2 - Dining Room



Max Dimensions: 9'6" x 12'1"
Calculated Area: 114 sq. ft
Included: Yes

Heated: Yes
Finished: Yes
Enclosed: Yes
Contiguous: Yes
Permitted: Yes
Wet space: No
Addition: No
Conversion: No

11 Floor 2 - Bedroom



Max Dimensions: 11'6" x 11'7"
Calculated Area: 111 sq. ft
Included: Yes

Heated: Yes
Finished: Yes
Enclosed: Yes
Contiguous: Yes
Permitted: Yes
Wet space: No
Addition: No
Conversion: No

9561 Upper Craigs Creek Rd, Catawba, Craig County, Virginia,
United States, 24070

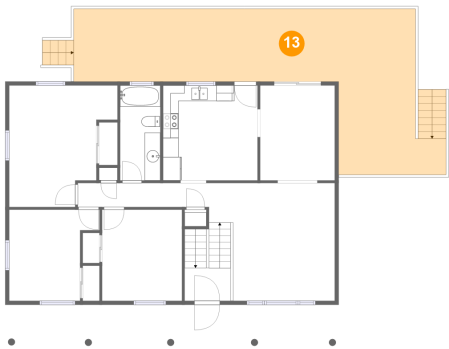
12 Floor 2 - Bedroom



Max Dimensions: 13'9" x 15'5"
Calculated Area: 174 sq. ft
Included: Yes

Heated: Yes
Finished: Yes
Enclosed: Yes
Contiguous: Yes
Permitted: Yes
Wet space: No
Addition: No
Conversion: No

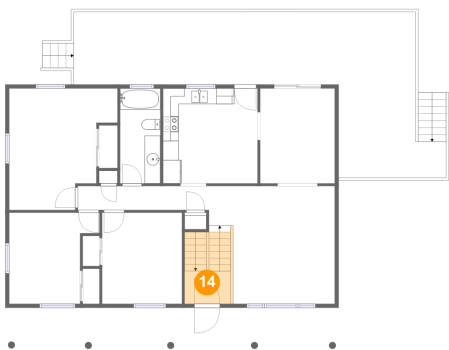
13 Floor 2 - Deck



Max Dimensions: 43'5" x 21'0"
Calculated Area: 570 sq. ft
Included: No

Heated: No
Finished: Yes
Enclosed: No
Contiguous: Yes
Permitted: Yes
Wet space: No
Addition: No
Conversion: No

14 Floor 2 - Foyer

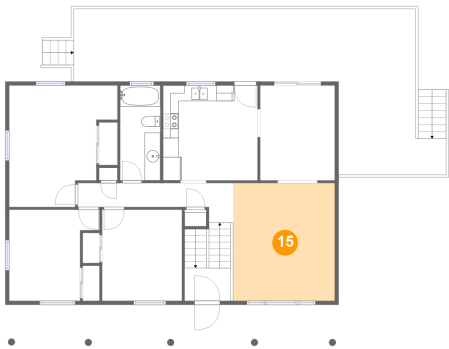


Max Dimensions: 5'10" x 4'2"
Calculated Area: 57 sq. ft
Included: Yes

Heated: Yes
Finished: Yes
Enclosed: Yes
Contiguous: Yes
Permitted: Yes
Wet space: No
Addition: No
Conversion: No

9561 Upper Craigs Creek Rd, Catawba, Craig County, Virginia,
United States, 24070

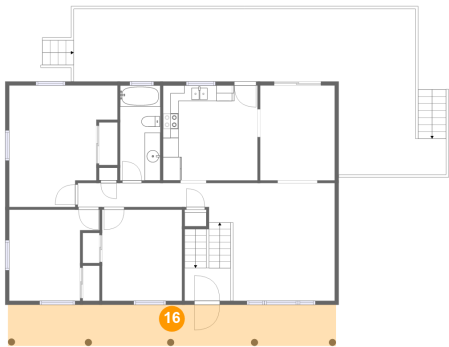
15 Floor 2 - Living Room



Max Dimensions: 12'11" x 15'0"
Calculated Area: 193 sq. ft
Included: Yes

Heated: Yes
Finished: Yes
Enclosed: Yes
Contiguous: Yes
Permitted: Yes
Wet space: No
Addition: No
Conversion: No

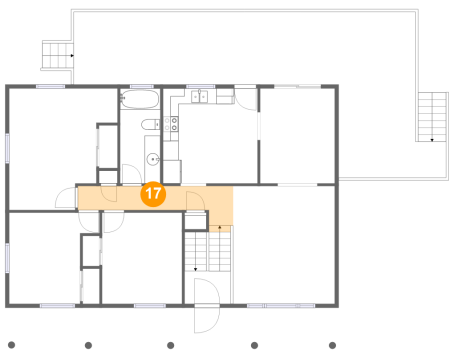
16 Floor 2 - Porch



Max Dimensions: 41'9" x 5'3"
Calculated Area: 219 sq. ft
Included: No

Heated: No
Finished: Yes
Enclosed: No
Contiguous: Yes
Permitted: Yes
Wet space: No
Addition: No
Conversion: No

17 Floor 2 - Hall

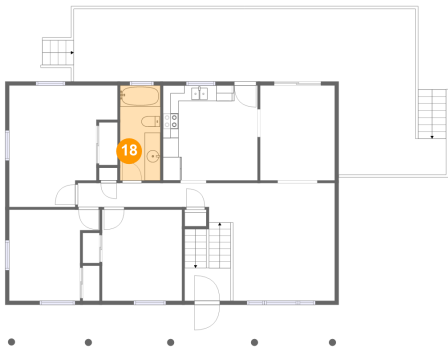


Max Dimensions: 19'9" x 5'0"
Calculated Area: 69 sq. ft
Included: Yes

Heated: Yes
Finished: Yes
Enclosed: Yes
Contiguous: Yes
Permitted: Yes
Wet space: No
Addition: No
Conversion: No

9561 Upper Craigs Creek Rd, Catawba, Craig County, Virginia,
United States, 24070

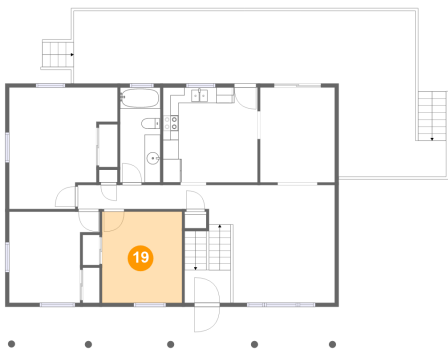
18 Floor 2 - Bath



Max Dimensions: 5'1" x 12'1"
Calculated Area: 62 sq. ft
Included: Yes

Heated: Yes
Finished: Yes
Enclosed: Yes
Contiguous: Yes
Permitted: Yes
Wet space: Yes
Addition: No
Conversion: No

19 Floor 2 - Bedroom



Max Dimensions: 10'2" x 11'7"
Calculated Area: 118 sq. ft
Included: Yes

Heated: Yes
Finished: Yes
Enclosed: Yes
Contiguous: Yes
Permitted: Yes
Wet space: No
Addition: No
Conversion: No