

Home report

130 rue Edward, Almonte, Lanark County, Ontario, Canada, K0A 1A0



**Total Area: 1293 sq. ft**  
Below Ground: 476 sq. ft, Floor 2: 740 sq. ft, Floor 3: 553 sq. ft  
Excluded: Utility 173 sq. ft, Fireplace 10 sq. ft, Walls: 175 sq. ft

Property summary

 **3** Floors

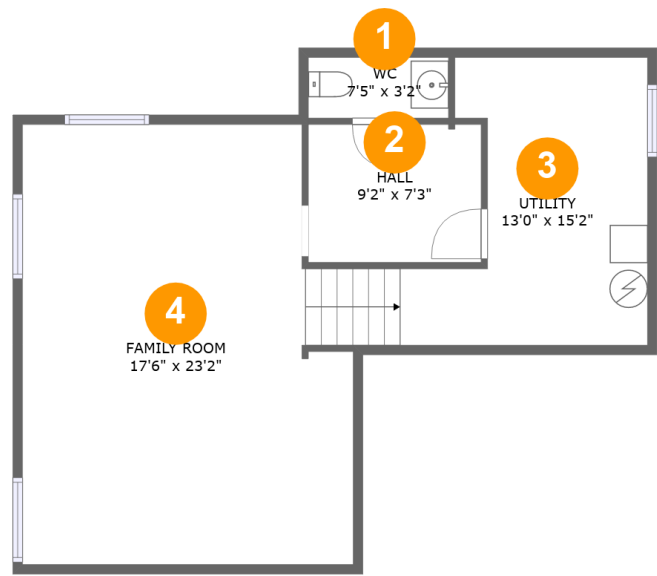
 **3** Bedrooms

 **2** Bathrooms

 **2** Half baths

Home report

130 rue Edward, Almonte, Lanark County, Ontario, Canada, K0A 1A0



Room dimensions

Floor 1 Below ground Total:476sqft    Excluded: 173sqft

#		Max Dimensions	sqft	Included
1	WC	7'5" x 3'2"	24 sq. ft	Yes
2	Hall	9'2" x 7'3"	66 sq. ft	Yes
3	Utility	13'0" x 15'2"	173 sq. ft	No
4	Family Room	17'6" x 23'2"	373 sq. ft	Yes

Home report

130 rue Edward, Almonte, Lanark County, Ontario, Canada, K0A 1A0



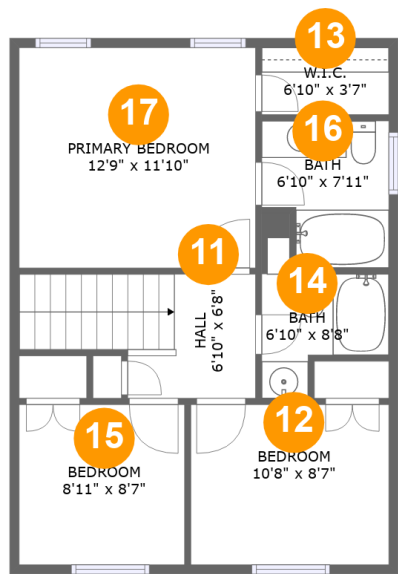
Room dimensions

Floor 2 Total:740sqft    Excluded: 10sqft

#		Max Dimensions	sqft	Included
5	WC	3'3" x 6'6"	21 sq. ft	Yes
6	Dining Area	9'3" x 11'3"	102 sq. ft	Yes
7	Living Room	11'3" x 24'2"	277 sq. ft	Yes
8	Hall	3'8" x 21'4"	120 sq. ft	Yes
9	Laundry	8'9" x 6'10"	57 sq. ft	Yes
10	Kitchen	10'7" x 11'10"	120 sq. ft	Yes

Home report

130 rue Edward, Almonte, Lanark County, Ontario, Canada, K0A 1A0



Room dimensions

Floor 3 Total:553sqft Excluded: 0sqft

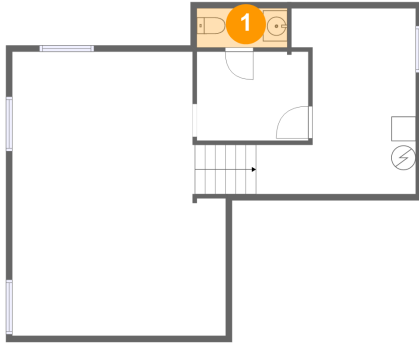
#		Max Dimensions	sqft	Included
11	Hall	6'10" x 6'8"	70 sq. ft	Yes
12	Bedroom	10'8" x 8'7"	92 sq. ft	Yes
13	W.I.C.	6'10" x 3'7"	25 sq. ft	Yes
14	Bath	6'10" x 8'8"	40 sq. ft	Yes
15	Bedroom	8'11" x 8'7"	77 sq. ft	Yes
16	Bath	6'10" x 7'11"	48 sq. ft	Yes
17	Primary Bedroom	12'9" x 11'10"	151 sq. ft	Yes

## Home report

130 rue Edward, Almonte, Lanark County, Ontario, Canada, K0A 1A0

### 1 Floor 1 - WC

---

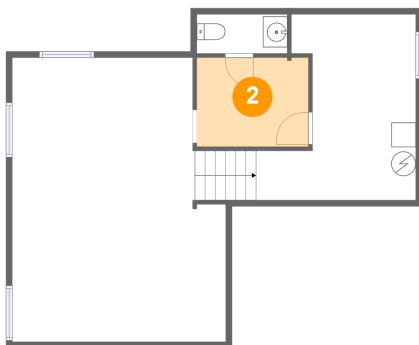


Max Dimensions: 7'5" x 3'2"  
Calculated Area: 24 sq. ft  
Included: Yes

Heated: Yes  
Finished: Yes  
Enclosed: Yes  
Contiguous: Yes  
Permitted: Yes  
Wet space: Yes  
Addition: No  
Conversion: No

### 2 Floor 1 - Hall

---

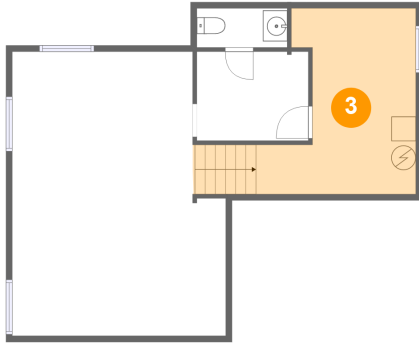


Max Dimensions: 9'2" x 7'3"  
Calculated Area: 66 sq. ft  
Included: Yes

Heated: Yes  
Finished: Yes  
Enclosed: Yes  
Contiguous: Yes  
Permitted: Yes  
Wet space: No  
Addition: No  
Conversion: No

130 rue Edward, Almonte, Lanark County, Ontario, Canada, K0A 1A0

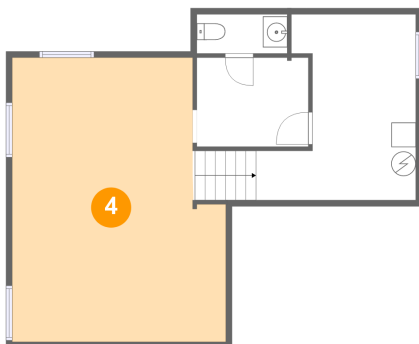
### 3 Floor 1 - Utility



Max Dimensions: 13'0" x 15'2"  
Calculated Area: 173 sq. ft  
Included: No

Heated: Yes  
Finished: No  
Enclosed: Yes  
Contiguous: Yes  
Permitted: Yes  
Wet space: No  
Addition: No  
Conversion: No

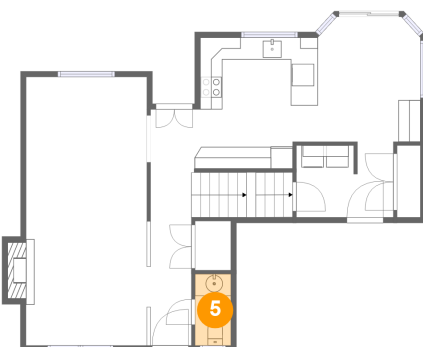
### 4 Floor 1 - Family Room



Max Dimensions: 17'6" x 23'2"  
Calculated Area: 373 sq. ft  
Included: Yes

Heated: Yes  
Finished: Yes  
Enclosed: Yes  
Contiguous: Yes  
Permitted: Yes  
Wet space: No  
Addition: No  
Conversion: No

### 5 Floor 2 - WC



Max Dimensions: 3'3" x 6'6"  
Calculated Area: 21 sq. ft  
Included: Yes

Heated: Yes  
Finished: Yes  
Enclosed: Yes  
Contiguous: Yes  
Permitted: Yes  
Wet space: Yes  
Addition: No  
Conversion: No

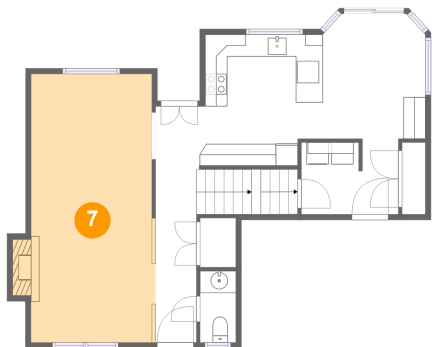
6 Floor 2 - Dining Area



Max Dimensions: 9'3" x 11'3"  
Calculated Area: 102 sq. ft  
Included: Yes

Heated: Yes  
Finished: Yes  
Enclosed: Yes  
Contiguous: Yes  
Permitted: Yes  
Wet space: No  
Addition: No  
Conversion: No

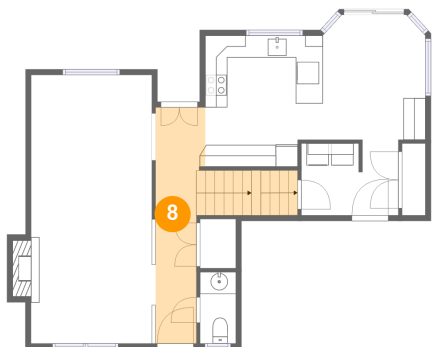
7 Floor 2 - Living Room



Max Dimensions: 11'3" x 24'2"  
Calculated Area: 277 sq. ft  
Included: Yes

Heated: Yes  
Finished: Yes  
Enclosed: Yes  
Contiguous: Yes  
Permitted: Yes  
Wet space: No  
Addition: No  
Conversion: No

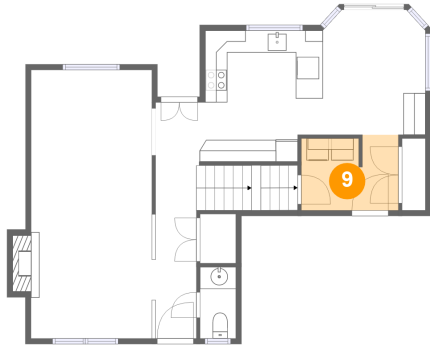
8 Floor 2 - Hall



Max Dimensions: 3'8" x 21'4"  
Calculated Area: 120 sq. ft  
Included: Yes

Heated: Yes  
Finished: Yes  
Enclosed: Yes  
Contiguous: Yes  
Permitted: Yes  
Wet space: No  
Addition: No  
Conversion: No

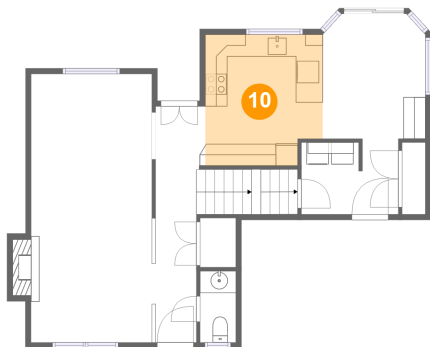
## 9 Floor 2 - Laundry



Max Dimensions: 8'9" x 6'10"  
Calculated Area: 57 sq. ft  
Included: Yes

Heated: Yes  
Finished: Yes  
Enclosed: Yes  
Contiguous: Yes  
Permitted: Yes  
Wet space: No  
Addition: No  
Conversion: No

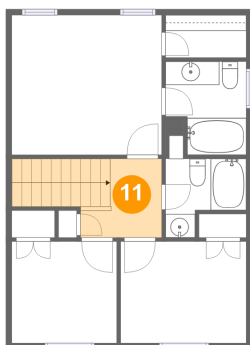
## 10 Floor 2 - Kitchen



Max Dimensions: 10'7" x 11'10"  
Calculated Area: 120 sq. ft  
Included: Yes

Heated: Yes  
Finished: Yes  
Enclosed: Yes  
Contiguous: Yes  
Permitted: Yes  
Wet space: No  
Addition: No  
Conversion: No

## 11 Floor 3 - Hall

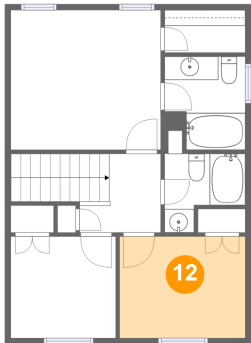


Max Dimensions: 6'10" x 6'8"  
Calculated Area: 70 sq. ft  
Included: Yes

Heated: Yes  
Finished: Yes  
Enclosed: Yes  
Contiguous: Yes  
Permitted: Yes  
Wet space: No  
Addition: No  
Conversion: No



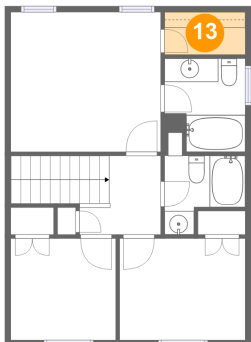
12 Floor 3 - Bedroom



Max Dimensions: 10'8" x 8'7"  
Calculated Area: 92 sq. ft  
Included: Yes

Heated: Yes  
Finished: Yes  
Enclosed: Yes  
Contiguous: Yes  
Permitted: Yes  
Wet space: No  
Addition: No  
Conversion: No

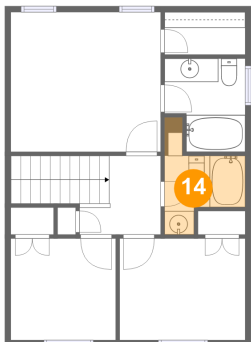
13 Floor 3 - W.I.C.



Max Dimensions: 6'10" x 3'7"  
Calculated Area: 25 sq. ft  
Included: Yes

Heated: Yes  
Finished: Yes  
Enclosed: Yes  
Contiguous: Yes  
Permitted: Yes  
Wet space: No  
Addition: No  
Conversion: No

14 Floor 3 - Bath

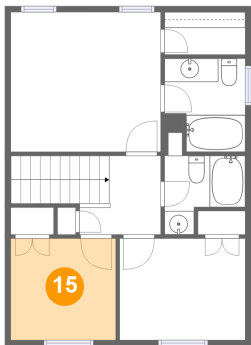


Max Dimensions: 6'10" x 8'8"  
Calculated Area: 40 sq. ft  
Included: Yes

Heated: Yes  
Finished: Yes  
Enclosed: Yes  
Contiguous: Yes  
Permitted: Yes  
Wet space: Yes  
Addition: No  
Conversion: No

130 rue Edward, Almonte, Lanark County, Ontario, Canada, K0A 1A0

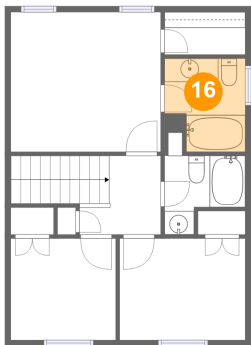
15 Floor 3 - Bedroom



Max Dimensions: 8'11" x 8'7"  
Calculated Area: 77 sq. ft  
Included: Yes

Heated: Yes  
Finished: Yes  
Enclosed: Yes  
Contiguous: Yes  
Permitted: Yes  
Wet space: No  
Addition: No  
Conversion: No

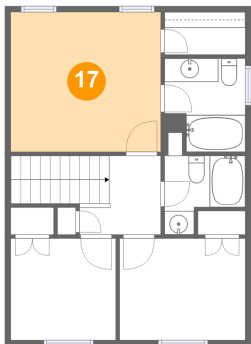
16 Floor 3 - Bath



Max Dimensions: 6'10" x 7'11"  
Calculated Area: 48 sq. ft  
Included: Yes

Heated: Yes  
Finished: Yes  
Enclosed: Yes  
Contiguous: Yes  
Permitted: Yes  
Wet space: Yes  
Addition: No  
Conversion: No

17 Floor 3 - Primary Bedroom



Max Dimensions: 12'9" x 11'10"  
Calculated Area: 151 sq. ft  
Included: Yes

Heated: Yes  
Finished: Yes  
Enclosed: Yes  
Contiguous: Yes  
Permitted: Yes  
Wet space: No  
Addition: No  
Conversion: No