

# Home report

## 515 Hooker Road, Concord Township, West Sunbury, Butler County, Pennsylvania, United States, 16061



## Property summary

**0** Garages

**3** Bedrooms

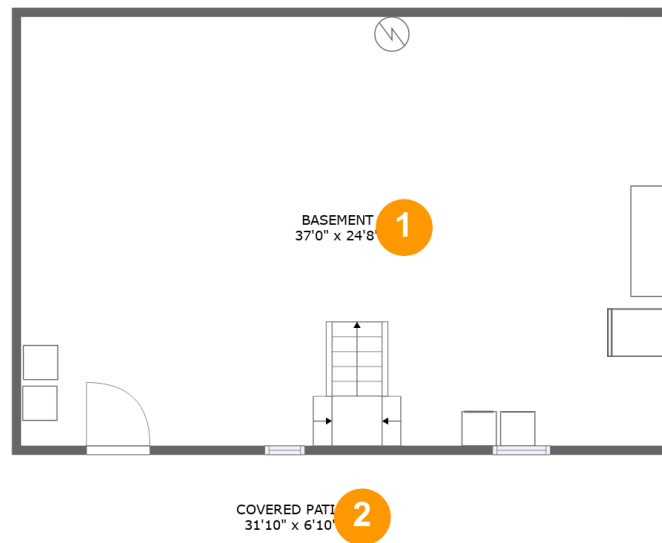
**2** Bathrooms

**0** Half baths

**3** Floors

**1,568** Gross living area sqft

**4,163** Total sqft



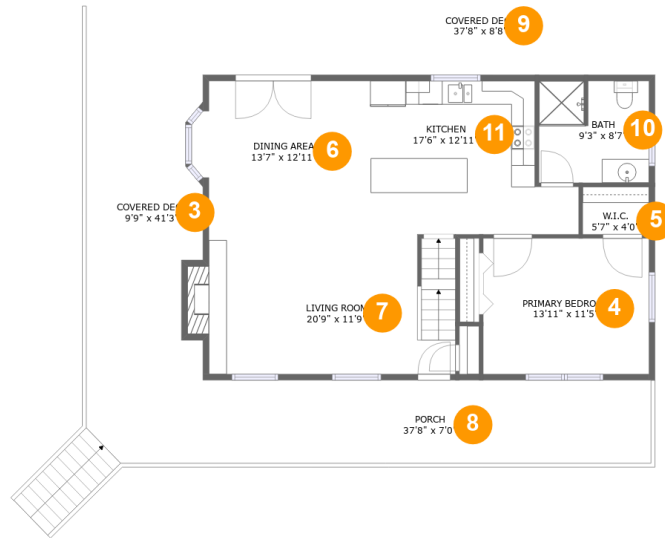
## Room dimensions

Floor 1

Total sqft: 1192

Living area: 0

#		Dimensions	sqft	Counted as living area
1	Basement	37'0" x 24'8"	912 sq. ft	No
2	Covered Patio	31'10" x 6'10"	218 sq. ft	No



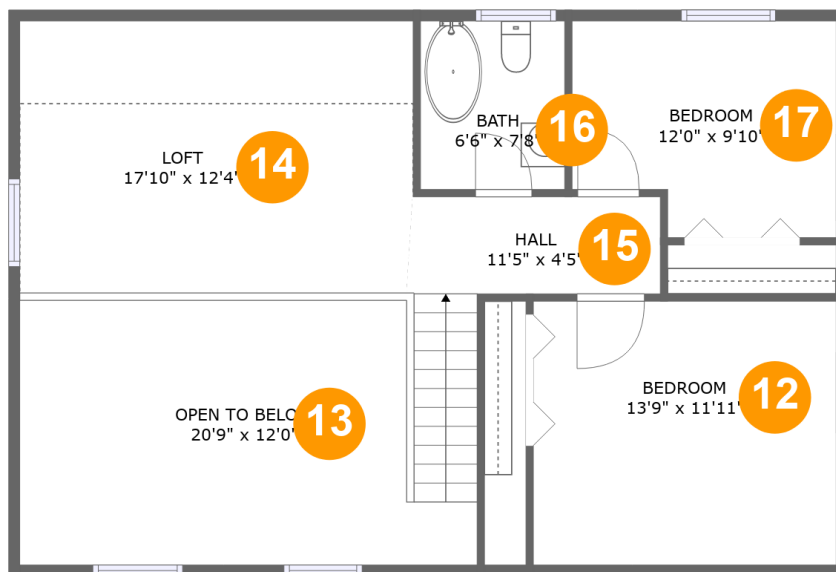
## Room dimensions

Floor 2

Total sqft: 1996

Living area: 975

#		Dimensions	sqft	Counted as living area
3	Covered Deck	9'9" x 41'3"	420 sq. ft	No
4	Primary Bedroom	13'11" x 11'5"	159 sq. ft	Yes
5	W.I.C.	5'7" x 4'0"	22 sq. ft	Yes
6	Dining Area	13'7" x 12'11"	175 sq. ft	Yes
7	Living Room	20'9" x 11'9"	252 sq. ft	Yes
8	Porch	37'8" x 7'0"	263 sq. ft	No
9	Covered Deck	37'8" x 8'8"	326 sq. ft	No
10	Bath	9'3" x 8'7"	78 sq. ft	Yes
11	Kitchen	17'6" x 12'11"	193 sq. ft	Yes



## Room dimensions

Floor 3

Total sqft: 975 Living area: 593

#		Dimensions	sqft	Counted as living area
12	Bedroom	13'9" x 11'11"	115 sq. ft	Yes
13	Open To Below	20'9" x 12'0"	219 sq. ft	No
14	Loft	17'10" x 12'4"	158 sq. ft	Yes
15	Hall	11'5" x 4'5"	80 sq. ft	Yes
16	Bath	6'6" x 7'8"	50 sq. ft	Yes
17	Bedroom	12'0" x 9'10"	108 sq. ft	Yes

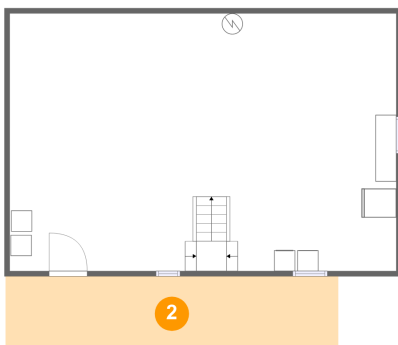
## 1 Floor 1 - Basement



Dimensions: 37'0" x 24'8"  
Area: 912 sq. ft  
Counted as living area: No

Heated: Yes  
Finished: No  
Enclosed: Yes  
Contiguous: Yes  
Permitted: Yes  
Wet space: No  
Addition: No  
Conversion: No

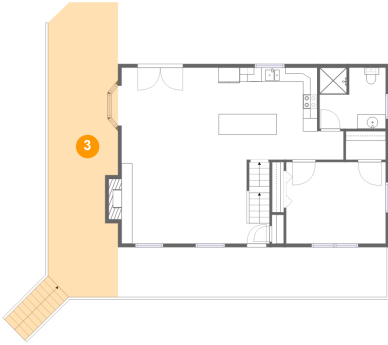
## 2 Floor 1 - Covered Patio



Dimensions: 31'10" x 6'10"  
Area: 218 sq. ft  
Counted as living area: No

Heated: No  
Finished: Yes  
Enclosed: No  
Contiguous: Yes  
Permitted: Yes  
Wet space: No  
Addition: No  
Conversion: No

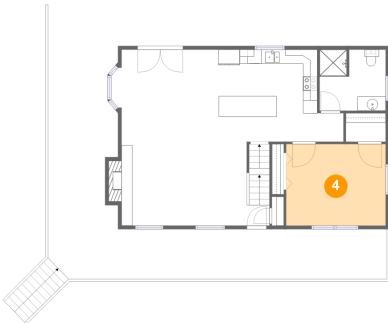
### 3 Floor 2 - Covered Deck



Dimensions: 9'9" x 41'3"  
Area: 420 sq. ft  
Counted as living area: No

Heated: No  
Finished: Yes  
Enclosed: No  
Contiguous: Yes  
Permitted: Yes  
Wet space: No  
Addition: No  
Conversion: No

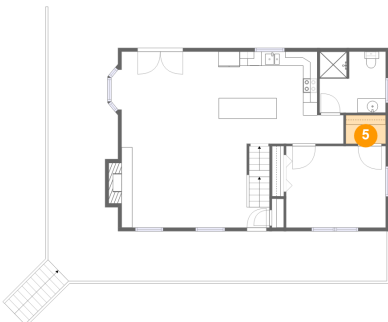
### 4 Floor 2 - Primary Bedroom



Dimensions: 13'11" x 11'5"  
Area: 159 sq. ft  
Counted as living area: Yes

Heated: Yes  
Finished: Yes  
Enclosed: Yes  
Contiguous: Yes  
Permitted: Yes  
Wet space: No  
Addition: No  
Conversion: No

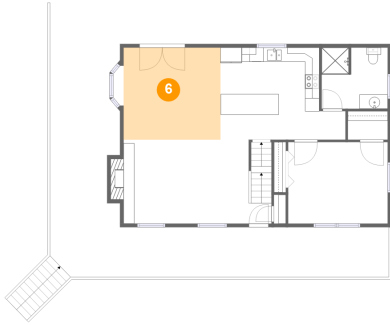
### 5 Floor 2 - W.I.C.



Dimensions: 5'7" x 4'0"  
Area: 22 sq. ft  
Counted as living area: Yes

Heated: Yes  
Finished: Yes  
Enclosed: Yes  
Contiguous: Yes  
Permitted: Yes  
Wet space: No  
Addition: No  
Conversion: No

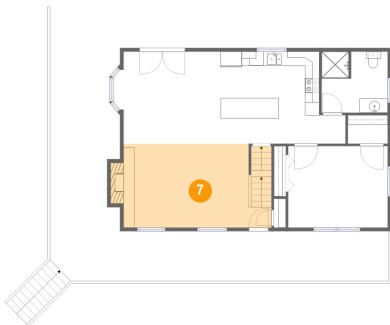
## 6 Floor 2 - Dining Area



Dimensions: 13'7" x 12'11"  
Area: 175 sq. ft  
Counted as living area: Yes

Heated: Yes  
Finished: Yes  
Enclosed: Yes  
Contiguous: Yes  
Permitted: Yes  
Wet space: No  
Addition: No  
Conversion: No

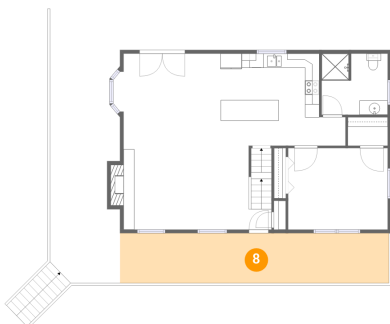
## 7 Floor 2 - Living Room



Dimensions: 20'9" x 11'9"  
Area: 252 sq. ft  
Counted as living area: Yes

Heated: Yes  
Finished: Yes  
Enclosed: Yes  
Contiguous: Yes  
Permitted: Yes  
Wet space: No  
Addition: No  
Conversion: No

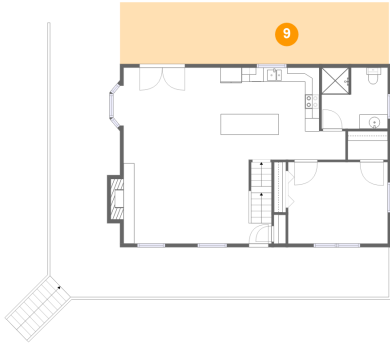
## 8 Floor 2 - Porch



Dimensions: 37'8" x 7'0"  
Area: 263 sq. ft  
Counted as living area: No

Heated: No  
Finished: Yes  
Enclosed: No  
Contiguous: Yes  
Permitted: Yes  
Wet space: No  
Addition: No  
Conversion: No

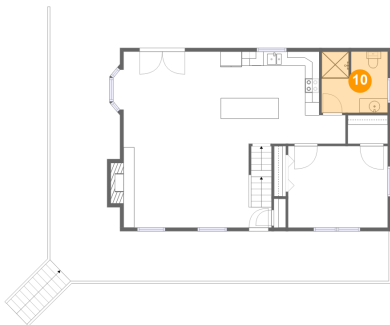
## 9 Floor 2 - Covered Deck



Dimensions: 37'8" x 8'8"  
Area: 326 sq. ft  
Counted as living area: No

Heated: No  
Finished: Yes  
Enclosed: No  
Contiguous: Yes  
Permitted: Yes  
Wet space: No  
Addition: No  
Conversion: No

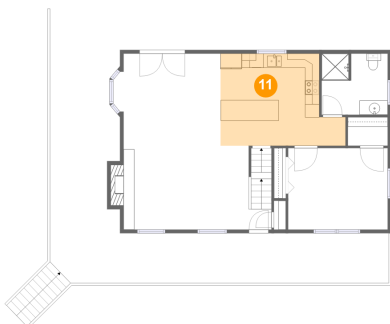
## 10 Floor 2 - Bath



Dimensions: 9'3" x 8'7"  
Area: 78 sq. ft  
Counted as living area: Yes

Heated: Yes  
Finished: Yes  
Enclosed: Yes  
Contiguous: Yes  
Permitted: Yes  
Wet space: Yes  
Addition: No  
Conversion: No

## 11 Floor 2 - Kitchen

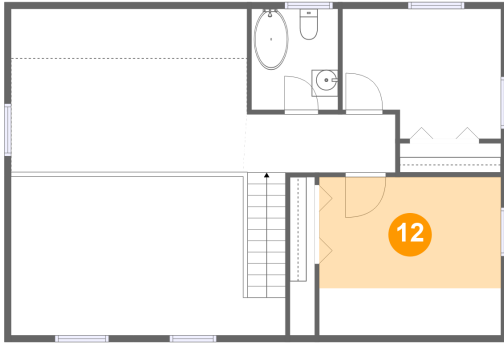


Dimensions: 17'6" x 12'11"  
Area: 193 sq. ft  
Counted as living area: Yes

Heated: Yes  
Finished: Yes  
Enclosed: Yes  
Contiguous: Yes  
Permitted: Yes  
Wet space: No  
Addition: No  
Conversion: No



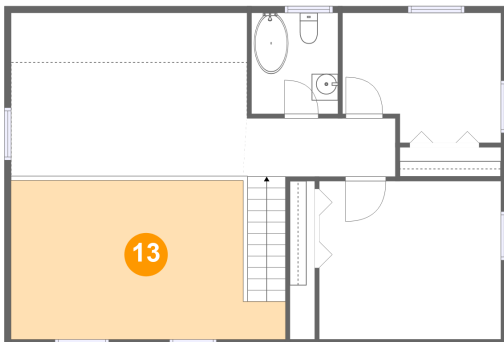
**12** Floor 3 - Bedroom



Dimensions: 13'9" x 11'11"  
Area: 115 sq. ft  
Counted as living area: Yes

Heated: Yes  
Finished: Yes  
Enclosed: Yes  
Contiguous: Yes  
Permitted: Yes  
Wet space: No  
Addition: No  
Conversion: No

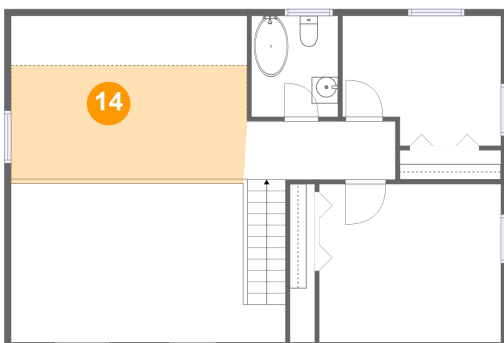
**13** Floor 3 - Open To Below



Dimensions: 20'9" x 12'0"  
Area: 219 sq. ft  
Counted as living area: No

Heated: No  
Finished: No  
Enclosed: No  
Contiguous: Yes  
Permitted: No  
Wet space: No  
Addition: No  
Conversion: No

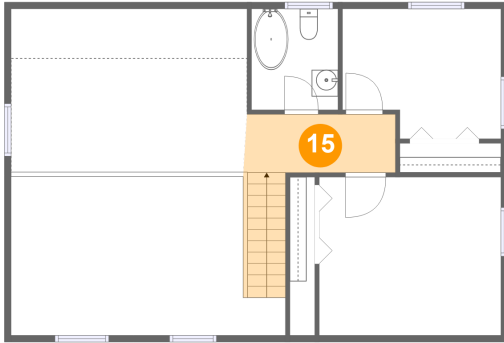
**14** Floor 3 - Loft



Dimensions: 17'10" x 12'4"  
Area: 158 sq. ft  
Counted as living area: Yes

Heated: Yes  
Finished: Yes  
Enclosed: Yes  
Contiguous: Yes  
Permitted: Yes  
Wet space: No  
Addition: No  
Conversion: No

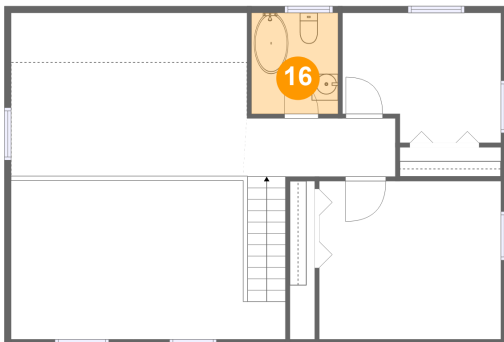
**15** Floor 3 - Hall



Dimensions: 11'5" x 4'5"  
Area: 80 sq. ft  
Counted as living area: Yes

Heated: Yes  
Finished: Yes  
Enclosed: Yes  
Contiguous: Yes  
Permitted: Yes  
Wet space: No  
Addition: No  
Conversion: No

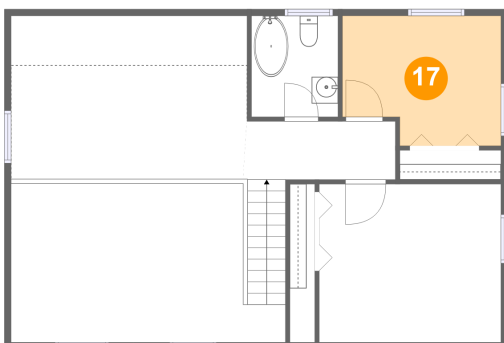
**16** Floor 3 - Bath



Dimensions: 6'6" x 7'8"  
Area: 50 sq. ft  
Counted as living area: Yes

Heated: Yes  
Finished: Yes  
Enclosed: Yes  
Contiguous: Yes  
Permitted: Yes  
Wet space: Yes  
Addition: No  
Conversion: No

**17** Floor 3 - Bedroom



Dimensions: 12'0" x 9'10"  
Area: 108 sq. ft  
Counted as living area: Yes

Heated: Yes  
Finished: Yes  
Enclosed: Yes  
Contiguous: Yes  
Permitted: Yes  
Wet space: No  
Addition: No  
Conversion: No