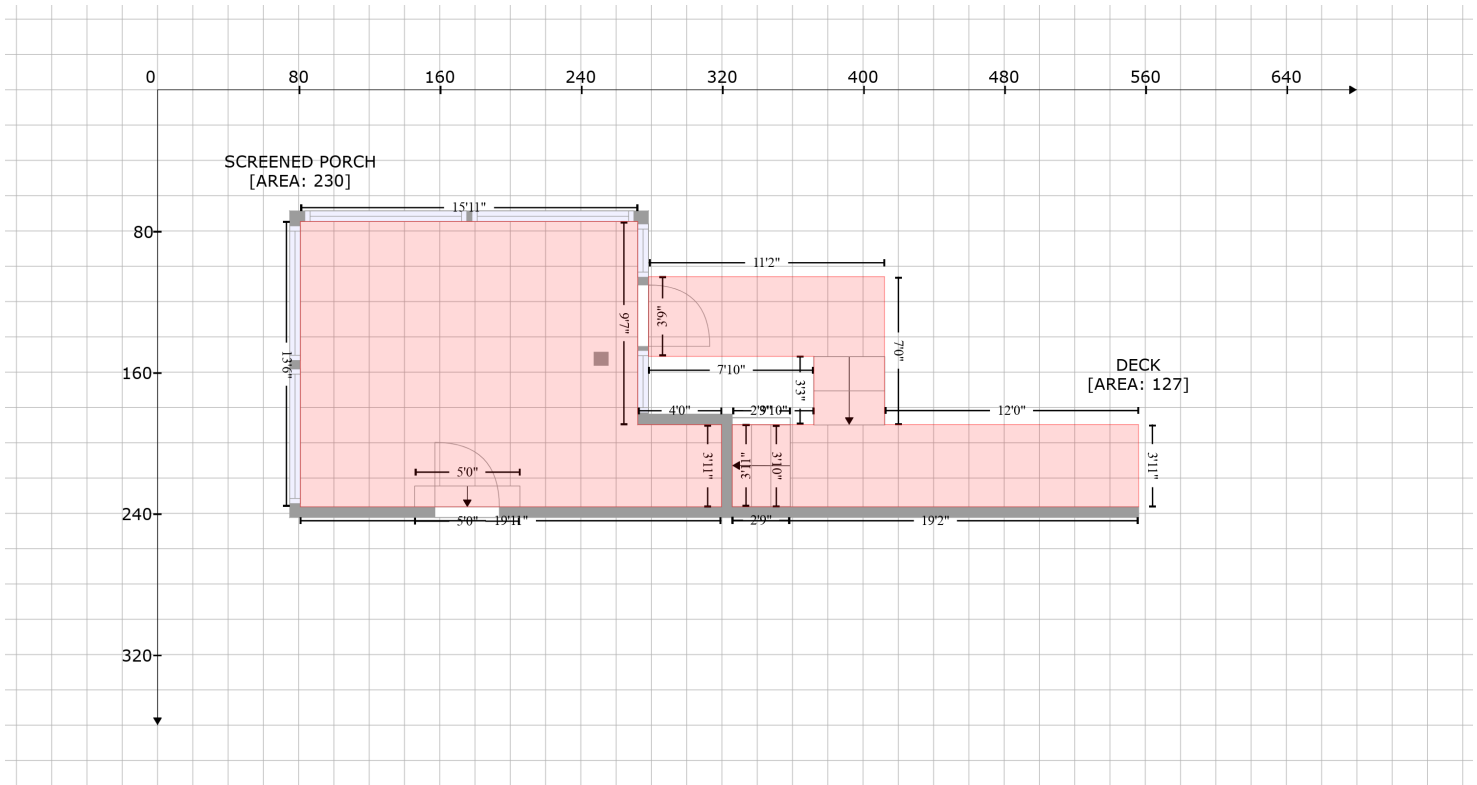


4604 Sterling Cross, Winfield Park, Nashville, Davidson County, Tennessee, United States, 37211

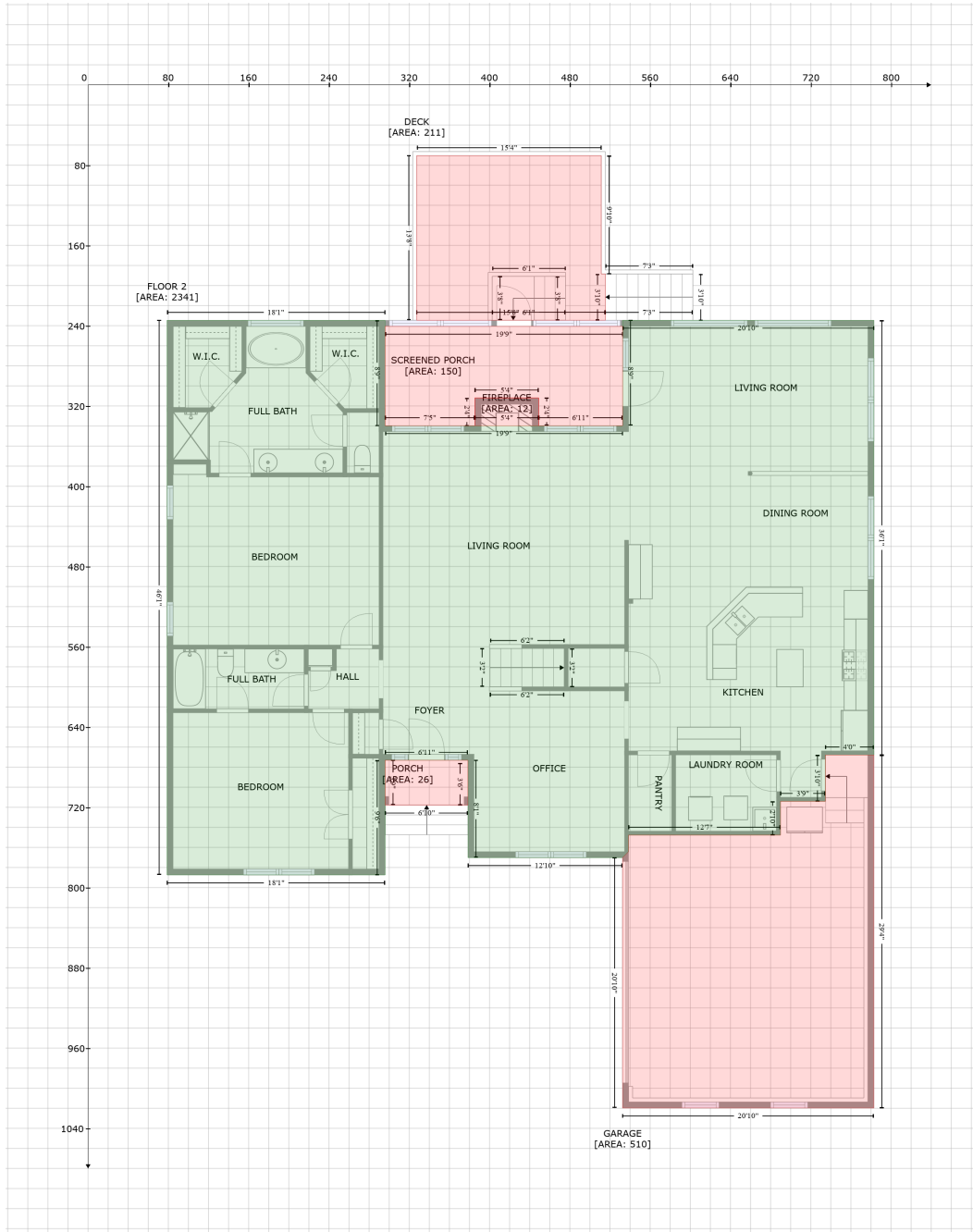
Gross Living Area: 3077 sq. ft



Space	Area (sq. ft)	Calculation <small>Coordinate Polygon Area Algorithm using inches</small>
SCREENED PORCH (Non-living area)	230	$-\left((272.3 + 272.3) * (74.6 - 189.7) + (272.3 + 319.8) * (189.7 - 189.7) + (319.8 + 319.8) * (189.7 - 236.3) + (319.8 + 80.9) * (236.3 - 236.3) + (80.9 + 80.9) * (236.3 - 74.6) + (80.9 + 272.3) * (74.6 - 74.6)\right) * 0.5 * 0.00694$
DECK (Non-living area)	127	$-\left((412.2 + 412.2) * (105.9 - 189.6) + (412.2 + 556.2) * (189.6 - 189.6) + (556.2 + 556.3) * (189.6 - 236.3) + (556.3 + 325.8) * (236.3 - 236.3) + (325.8 + 325.8) * (236.3 - 189.7) + (325.8 + 372.2) * (189.7 - 189.7) + (372.2 + 372.2) * (189.7 - 151) + (372.2 + 278.4) * (151 - 151) + (278.4 + 278.5) * (151 - 105.9) + (278.5 + 412.2) * (105.9 - 105.9)\right) * 0.5 * 0.00694$

4604 Sterling Cross, Winfield Park, Nashville, Davidson County, Tennessee, United States, 37211

Gross Living Area: 3077 sq. ft



Space	Area (sq. ft)	Calculation
FLOOR 2 (Living area)	2341	Coordinate Polygon Area Algorithm using inches $-((295.9 + 295.9) * (234.6 - 339.6) + (295.9 + 532.5) * (339.6 - 339.6) + (532.5 + 532.5) * (339.6 - 234.6) + (532.5 + 782.9) * (234.6 - 234.6) + (782.9 + 782.9) * (234.6 - 667.9) + (782.9 + 734.6) * (667.9 - 667.9) + (734.6 + 734.6) * (667.9 - 714) + (734.6 + 689.8) * (714 - 714) + (689.8 + 689.8) * (714 - 747.7) + (689.8 + 538.5) * (747.7 - 747.7) + (538.5 + 538.5) * (747.7 - 764.2) + (538.5 + 532.5) * (764.2 - 770.2) + (532.5 + 378.5) * (770.2 - 770.2) + (378.5 + 378.5) * (770.2 - 673.1) + (378.5 + 296) * (673.1 - 673.1) + (296 + 296) * (673.1 - 787.4) + (296 + 78.7) * (787.4 - 787.4) + (78.7 + 78.7) * (787.4 - 234.6) + (78.7 + 295.9) * (234.6 - 234.6)) * 0.5 * 0.00694$

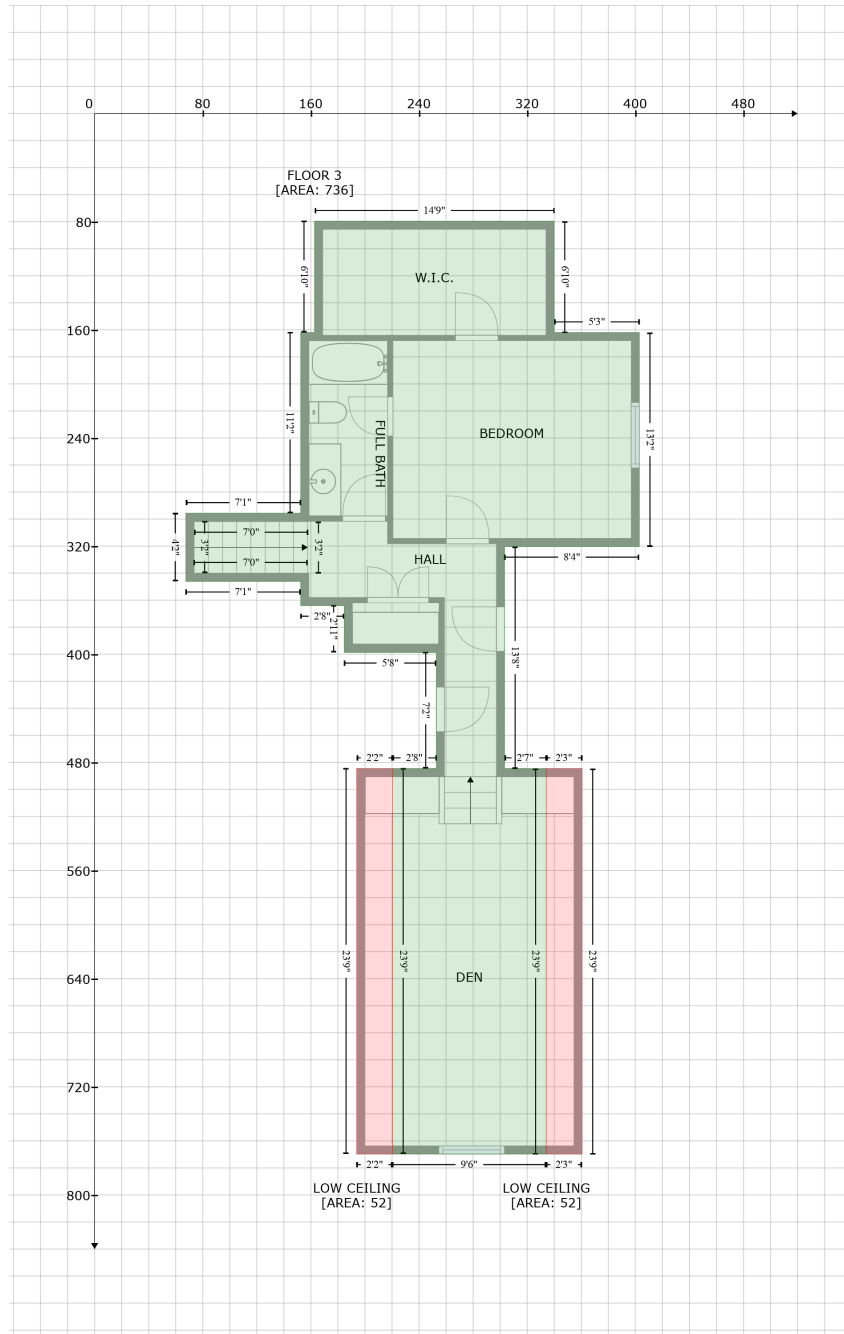
4604 Sterling Cross, Winfield Park, Nashville, Davidson County, Tennessee, United States, 37211

Gross Living Area: 3077 sq. ft

Space	Area (sq. ft)	Calculation <small>Coordinate Polygon Area Algorithm using inches</small>
SCREENED PORCH (Non-living area)	150	$-\left((532.5 + 532.5) * (240.6 - 339.6) + (532.5 + 449) * (339.6 - 339.6) + (449 + 449) * (339.6 - 312) + (449 + 385.3) * (312 - 312) + (385.3 + 385.3) * (312 - 339.6) + (385.3 + 295.9) * (339.6 - 339.6) + (295.9 + 295.9) * (339.6 - 240.6) + (295.9 + 532.5) * (240.6 - 240.6)\right) * 0.5 * 0.00694$
PORCH (Non-living area)	26	$-\left((378.5 + 378.5) * (673.1 - 675.9) + (378.5 + 378.5) * (675.9 - 717.9) + (378.5 + 296) * (717.9 - 717.9) + (296 + 296) * (717.9 - 673.1) + (296 + 378.5) * (673.1 - 673.1)\right) * 0.5 * 0.00694$
DECK (Non-living area)	211	$-\left((511.3 + 511.3) * (70.5 - 188.4) + (511.3 + 515.4) * (188.4 - 188.4) + (515.4 + 515.4) * (188.4 - 234.6) + (515.4 + 327.4) * (234.6 - 234.6) + (327.4 + 327.4) * (234.6 - 70.5) + (327.4 + 511.3) * (70.5 - 70.5)\right) * 0.5 * 0.00694$
GARAGE (Non-living area)	510	$-\left((782.9 + 782.9) * (667.9 - 1019.7) + (782.9 + 532.5) * (1019.7 - 1019.7) + (532.5 + 532.5) * (1019.7 - 770.2) + (532.5 + 538.5) * (770.2 - 764.2) + (538.5 + 538.5) * (764.2 - 747.7) + (538.5 + 689.8) * (747.7 - 747.7) + (689.8 + 689.8) * (747.7 - 714) + (689.8 + 734.6) * (714 - 714) + (734.6 + 734.6) * (714 - 667.9) + (734.6 + 782.9) * (667.9 - 667.9)\right) * 0.5 * 0.00694$
FIREPLACE (Non-living area)	12	$-\left((449 + 449) * (312 - 339.6) + (449 + 385.3) * (339.6 - 339.6) + (385.3 + 385.3) * (339.6 - 312) + (385.3 + 449) * (312 - 312)\right) * 0.5 * 0.00694$

4604 Sterling Cross, Winfield Park, Nashville, Davidson County, Tennessee, United States, 37211

Gross Living Area: 3077 sq. ft



Space

Area (sq. ft)

Calculation Coordinate Polygon Area Algorithm using inches

FLOOR 3
(Living area)

736

$$\begin{aligned}
 & -((339.9 + 339.9) * (79.6 - 162) + (339.9 + 402.9) * (162 - 162) + (402.9 + 402.9) * (162 - 320.3) + \\
 & (402.9 + 303.2) * (320.3 - 320.3) + (303.2 + 303.2) * (320.3 - 484.5) + (303.2 + 334.1) * (484.5 - \\
 & 484.5) + (334.1 + 334.1) * (484.5 - 769.7) + (334.1 + 220.4) * (769.7 - 769.7) + (220.4 + 220.4) * \\
 & (769.7 - 484.5) + (220.4 + 252.8) * (484.5 - 484.5) + (252.8 + 252.8) * (484.5 - 398.6) + (252.8 + \\
 & 184.7) * (398.6 - 398.6) + (184.7 + 184.7) * (398.6 - 364) + (184.7 + 152.5) * (364 - 364) + (152.5 \\
 & + 152.5) * (364 - 346.1) + (152.5 + 67.5) * (346.1 - 346.1) + (67.5 + 67.5) * (346.1 - 295.7) + (67.5 \\
 & + 152.5) * (295.7 - 295.7) + (152.5 + 152.5) * (295.7 - 162) + (152.5 + 162.8) * (162 - 162) +
 \end{aligned}$$

4604 Sterling Cross, Winfield Park, Nashville, Davidson County, Tennessee, United States, 37211

Gross Living Area: 3077 sq. ft

Space	Area (sq. ft)	Calculation <small>Coordinate Polygon Area Algorithm using inches</small>
LOW CEILING (Non-living area)	52	$(162.8 + 162.8) * (162 - 79.6) + (162.8 + 339.9) * (79.6 - 79.6) * 0.5 * 0.00694$ $-((360.6 + 360.6) * (484.5 - 769.7) + (360.6 + 334.1) * (769.7 - 769.7) + (334.1 + 334.1) * (769.7 - 484.5) + (334.1 + 360.6) * (484.5 - 484.5)) * 0.5 * 0.00694$
LOW CEILING (Non-living area)	52	$-((220.4 + 220.4) * (484.5 - 769.7) + (220.4 + 193.9) * (769.7 - 769.7) + (193.9 + 193.9) * (769.7 - 484.5) + (193.9 + 220.4) * (484.5 - 484.5)) * 0.5 * 0.00694$