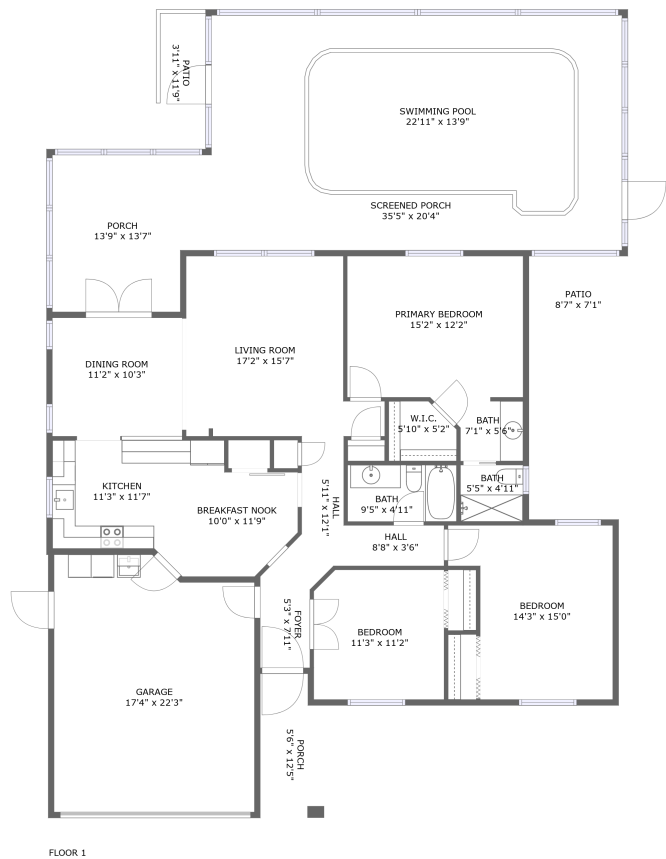


Home report

8730 Martinique Lane, Jasmine Estates, Port Richey, Pasco County, Florida, United States, 34668



Total Area: 1384 sq. ft

Floor 1: 1384 sq. ft


Excluded: Garage 366 sq. ft, Patio 107 sq. ft, Porch 237 sq. ft, Screened porch 440 sq. ft, Walls: 167 sq. ft

Property summary

 **1** Floors

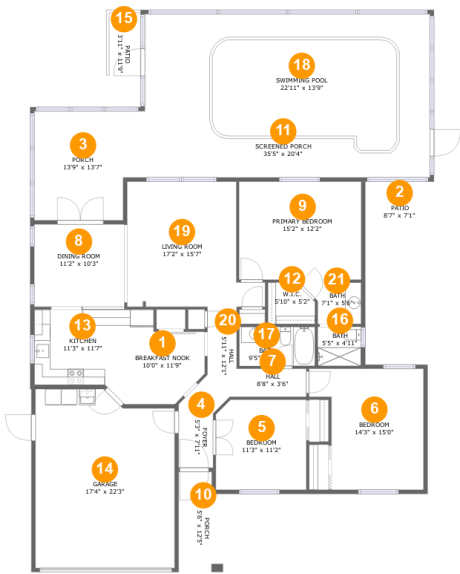
 **3** Bedrooms

 **2** Bathrooms

 **1** Garages

Home report

8730 Martinique Lane, Jasmine Estates, Port Richey, Pasco County, Florida, United States, 34668



Room dimensions

Floor 1 Total:1384sqft   Excluded: 1150sqft

#		Max Dimensions	sqft	Included
1	Breakfast Nook	10'0" x 11'9"	94 sq. ft	Yes
2	Patio	8'7" x 7'1"	61 sq. ft	No
3	Porch	13'9" x 13'7"	172 sq. ft	No
4	Foyer	5'3" x 7'11"	34 sq. ft	Yes
5	Bedroom	11'3" x 11'2"	124 sq. ft	Yes
6	Bedroom	14'3" x 15'0"	182 sq. ft	Yes
7	Hall	8'8" x 3'6"	30 sq. ft	Yes
8	Dining Room	11'2" x 10'3"	115 sq. ft	Yes
9	Primary Bedroom	15'2" x 12'2"	185 sq. ft	Yes
10	Porch	5'6" x 12'5"	65 sq. ft	No
11	Screened Porch	35'5" x 20'4"	719 sq. ft	No

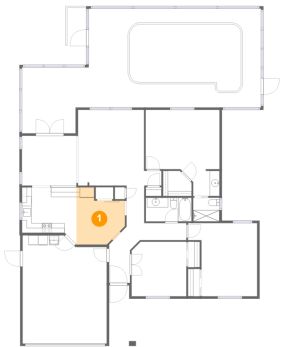
## Home report

**8730 Martinique Lane, Jasmine Estates, Port Richey, Pasco County, Florida, United States, 34668**

#		Max Dimensions	sqft	Included
12	W.I.C.	5'10" x 5'2"	27 sq. ft	Yes
13	Kitchen	11'3" x 11'7"	110 sq. ft	Yes
14	Garage	17'4" x 22'3"	366 sq. ft	No
15	Patio	3'11" x 11'9"	46 sq. ft	No
16	Bath	5'5" x 4'11"	26 sq. ft	Yes
17	Bath	9'5" x 4'11"	46 sq. ft	Yes
18	Swimming Pool	22'11" x 13'9"	279 sq. ft	No
19	Living Room	17'2" x 15'7"	222 sq. ft	Yes
20	Hall	5'11" x 12'1"	49 sq. ft	Yes
21	Bath	7'1" x 5'6"	32 sq. ft	Yes

8730 Martinique Lane, Jasmine Estates, Port Richey, Pasco  
County, Florida, United States, 34668

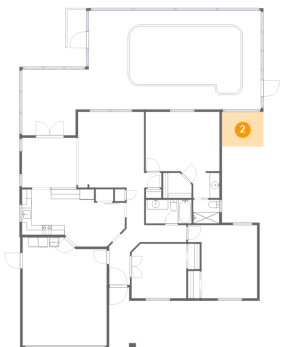
1 Floor 1 - Breakfast Nook



Max Dimensions: 10'0" x 11'9"  
Calculated Area: 94 sq. ft  
Included: Yes

Heated: Yes  
Finished: Yes  
Enclosed: Yes  
Contiguous: Yes  
Permitted: Yes  
Wet space: No  
Addition: No  
Conversion: No

2 Floor 1 - Patio



Max Dimensions: 8'7" x 7'1"  
Calculated Area: 61 sq. ft  
Included: No

Heated: No  
Finished: Yes  
Enclosed: No  
Contiguous: Yes  
Permitted: Yes  
Wet space: No  
Addition: No  
Conversion: No

8730 Martinique Lane, Jasmine Estates, Port Richey, Pasco  
County, Florida, United States, 34668

3 Floor 1 - Porch



Max Dimensions: 13'9" x 13'7"  
Calculated Area: 172 sq. ft  
Included: No

Heated: No  
Finished: Yes  
Enclosed: No  
Contiguous: Yes  
Permitted: Yes  
Wet space: No  
Addition: No  
Conversion: No

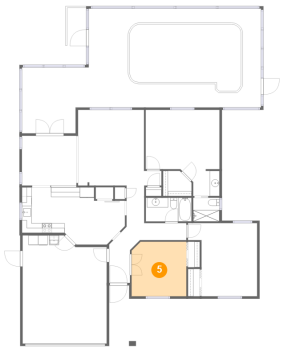
4 Floor 1 - Foyer



Max Dimensions: 5'3" x 7'11"  
Calculated Area: 34 sq. ft  
Included: Yes

Heated: Yes  
Finished: Yes  
Enclosed: Yes  
Contiguous: Yes  
Permitted: Yes  
Wet space: No  
Addition: No  
Conversion: No

5 Floor 1 - Bedroom

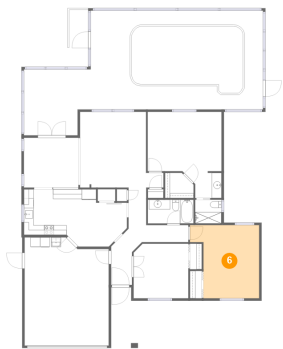


Max Dimensions: 11'3" x 11'2"  
Calculated Area: 124 sq. ft  
Included: Yes

Heated: Yes  
Finished: Yes  
Enclosed: Yes  
Contiguous: Yes  
Permitted: Yes  
Wet space: No  
Addition: No  
Conversion: No

8730 Martinique Lane, Jasmine Estates, Port Richey, Pasco  
County, Florida, United States, 34668

6 Floor 1 - Bedroom



Max Dimensions: 14'3" x 15'0"  
Calculated Area: 182 sq. ft  
Included: Yes

Heated: Yes  
Finished: Yes  
Enclosed: Yes  
Contiguous: Yes  
Permitted: Yes  
Wet space: No  
Addition: No  
Conversion: No

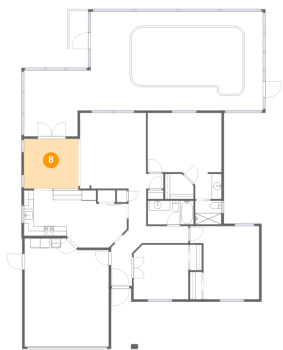
7 Floor 1 - Hall



Max Dimensions: 8'8" x 3'6"  
Calculated Area: 30 sq. ft  
Included: Yes

Heated: Yes  
Finished: Yes  
Enclosed: Yes  
Contiguous: Yes  
Permitted: Yes  
Wet space: No  
Addition: No  
Conversion: No

8 Floor 1 - Dining Room

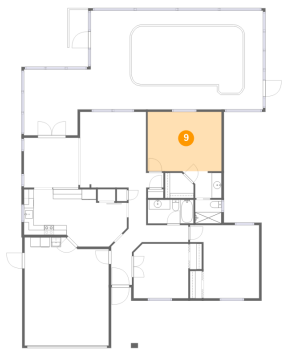


Max Dimensions: 11'2" x 10'3"  
Calculated Area: 115 sq. ft  
Included: Yes

Heated: Yes  
Finished: Yes  
Enclosed: Yes  
Contiguous: Yes  
Permitted: Yes  
Wet space: No  
Addition: No  
Conversion: No

8730 Martinique Lane, Jasmine Estates, Port Richey, Pasco  
County, Florida, United States, 34668

9 Floor 1 - Primary Bedroom



Max Dimensions: 15'2" x 12'2"  
Calculated Area: 185 sq. ft  
Included: Yes

Heated: Yes  
Finished: Yes  
Enclosed: Yes  
Contiguous: Yes  
Permitted: Yes  
Wet space: No  
Addition: No  
Conversion: No

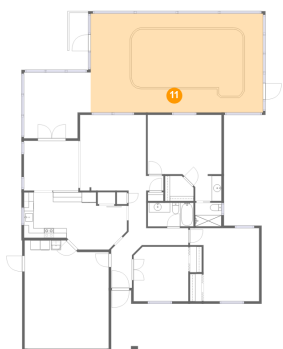
10 Floor 1 - Porch



Max Dimensions: 5'6" x 12'5"  
Calculated Area: 65 sq. ft  
Included: No

Heated: No  
Finished: Yes  
Enclosed: No  
Contiguous: Yes  
Permitted: Yes  
Wet space: No  
Addition: No  
Conversion: No

11 Floor 1 - Screened Porch

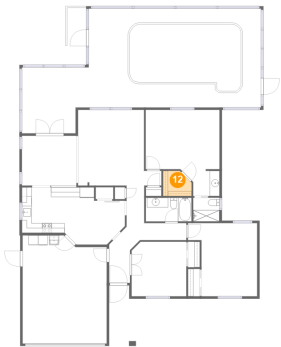


Max Dimensions: 35'5" x 20'4"  
Calculated Area: 719 sq. ft  
Included: No

Heated: No  
Finished: Yes  
Enclosed: No  
Contiguous: Yes  
Permitted: Yes  
Wet space: No  
Addition: No  
Conversion: No

8730 Martinique Lane, Jasmine Estates, Port Richey, Pasco  
County, Florida, United States, 34668

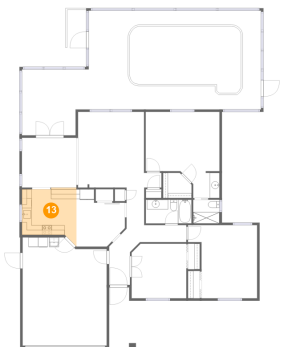
12 Floor 1 - W.I.C.



Max Dimensions: 5'10" x 5'2"  
Calculated Area: 27 sq. ft  
Included: Yes

Heated: Yes  
Finished: Yes  
Enclosed: Yes  
Contiguous: Yes  
Permitted: Yes  
Wet space: No  
Addition: No  
Conversion: No

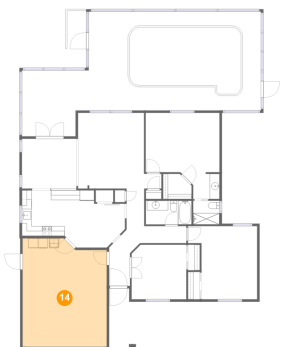
13 Floor 1 - Kitchen



Max Dimensions: 11'3" x 11'7"  
Calculated Area: 110 sq. ft  
Included: Yes

Heated: Yes  
Finished: Yes  
Enclosed: Yes  
Contiguous: Yes  
Permitted: Yes  
Wet space: No  
Addition: No  
Conversion: No

14 Floor 1 - Garage



Max Dimensions: 17'4" x 22'3"  
Calculated Area: 366 sq. ft  
Included: No

Heated: No  
Finished: No  
Enclosed: Yes  
Contiguous: Yes  
Permitted: Yes  
Wet space: No  
Addition: No  
Conversion: No



8730 Martinique Lane, Jasmine Estates, Port Richey, Pasco  
County, Florida, United States, 34668

15 Floor 1 - Patio



Max Dimensions: 3'11" x 11'9"  
Calculated Area: 46 sq. ft  
Included: No

Heated: No  
Finished: Yes  
Enclosed: No  
Contiguous: Yes  
Permitted: Yes  
Wet space: No  
Addition: No  
Conversion: No

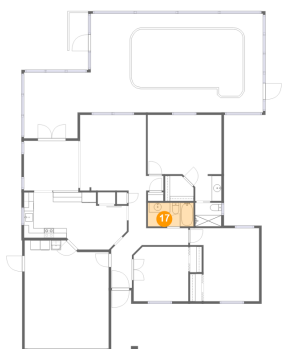
16 Floor 1 - Bath



Max Dimensions: 5'5" x 4'11"  
Calculated Area: 26 sq. ft  
Included: Yes

Heated: Yes  
Finished: Yes  
Enclosed: Yes  
Contiguous: Yes  
Permitted: Yes  
Wet space: Yes  
Addition: No  
Conversion: No

17 Floor 1 - Bath



Max Dimensions: 9'5" x 4'11"  
Calculated Area: 46 sq. ft  
Included: Yes

Heated: Yes  
Finished: Yes  
Enclosed: Yes  
Contiguous: Yes  
Permitted: Yes  
Wet space: Yes  
Addition: No  
Conversion: No

8730 Martinique Lane, Jasmine Estates, Port Richey, Pasco  
County, Florida, United States, 34668

18 Floor 1 - Swimming Pool



Max Dimensions: 22'11" x 13'9"  
Calculated Area: 279 sq. ft  
Included: No

Heated: No  
Finished: No  
Enclosed: No  
Contiguous: Yes  
Permitted: No  
Wet space: No  
Addition: No  
Conversion: No

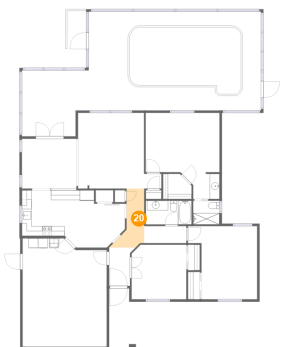
19 Floor 1 - Living Room



Max Dimensions: 17'2" x 15'7"  
Calculated Area: 222 sq. ft  
Included: Yes

Heated: Yes  
Finished: Yes  
Enclosed: Yes  
Contiguous: Yes  
Permitted: Yes  
Wet space: No  
Addition: No  
Conversion: No

20 Floor 1 - Hall



Max Dimensions: 5'11" x 12'1"  
Calculated Area: 49 sq. ft  
Included: Yes

Heated: Yes  
Finished: Yes  
Enclosed: Yes  
Contiguous: Yes  
Permitted: Yes  
Wet space: No  
Addition: No  
Conversion: No

8730 Martinique Lane, Jasmine Estates, Port Richey, Pasco  
County, Florida, United States, 34668

21 Floor 1 - Bath



Max Dimensions: 7'1" x 5'6"  
Calculated Area: 32 sq. ft  
Included: Yes

Heated: Yes  
Finished: Yes  
Enclosed: Yes  
Contiguous: Yes  
Permitted: Yes  
Wet space: Yes  
Addition: No  
Conversion: No