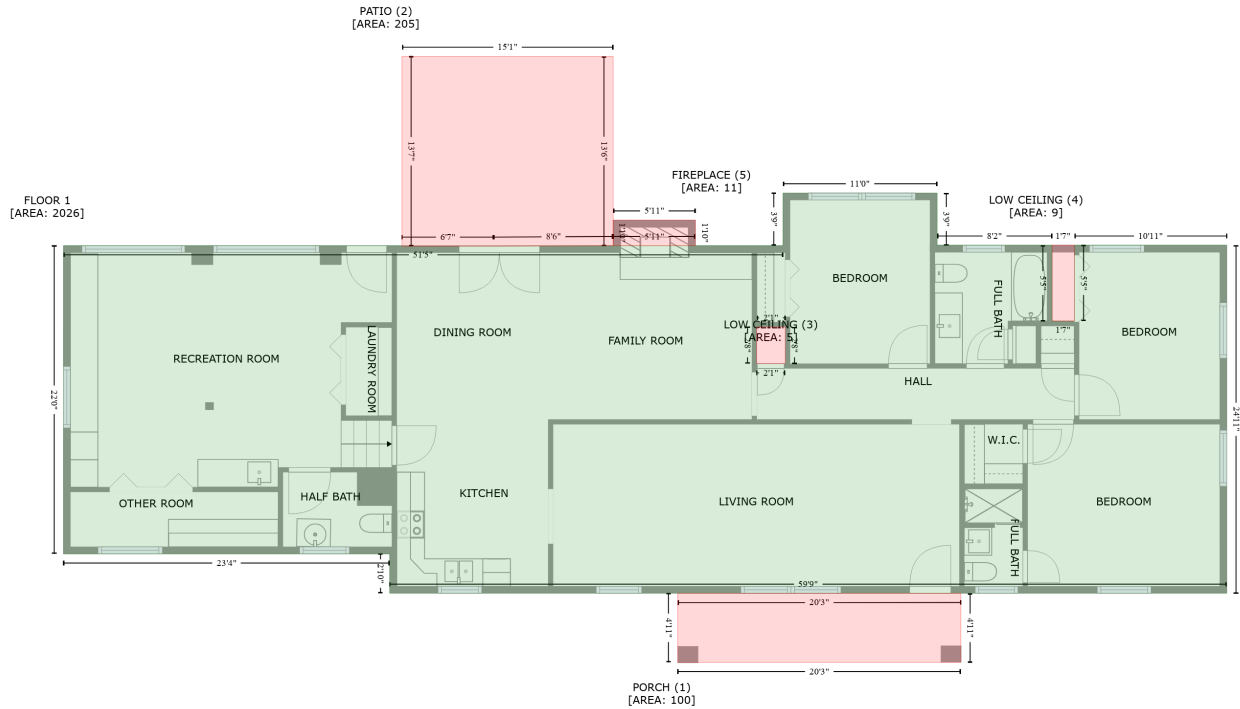


319 Indian Lake Road, Indian Forest, Hendersonville, Sumner County, Tennessee, United States, 37075

Gross Living Area: 2026 sq. ft



Space	Area (sq. ft)	Calculation
FLOOR 1 (Living area)	2026	$-\left((749.7 + 749.7) * (175.9 - 220.6) + (749.7 + 848.2) * (220.6 - 220.6) + (848.2 + 848.2) * (220.6 - 285.7) + (848.2 + 867.3) * (285.7 - 285.7) + (867.3 + 867.3) * (285.7 - 220.6) + (867.3 + 998) * (220.6 - 220.6) + (998 + 998) * (220.6 - 519.3) + (998 + 280.6) * (519.3 - 519.3) + (280.6 + 280.6) * (519.3 - 485.4) + (280.6 + 1) * (485.4 - 485.4) + (1 + 1) * (485.4 - 221) + (1 + 291.1) * (221 - 221) + (291.1 + 291.1) * (221 - 221.6) + (291.1 + 369.9) * (221.6 - 221.6) + (369.9 + 472.1) * (221.6 - 221) + (472.1 + 617.6) * (221 - 221) + (617.6 + 617.6) * (221 - 175.9) + (617.6 + 749.7) * (175.9 - 175.9) * 0.5 * 0.00694 + -((619.6 + 595.1) * (290.8 - 290.8) + (595.1 + 595.1) * (290.8 - 322.3) + (595.1 + 619.6) * (322.3 - 322.3) + (619.6 + 619.6) * (322.3 - 290.8)) * 0.5 * 0.00694$
PORCH (Non-living area)	100	$-\left((770.1 + 770.1) * (519.3 - 578.5) + (770.1 + 527.4) * (578.5 - 578.5) + (527.4 + 527.4) * (578.5 - 519.3) + (527.4 + 770.1) * (519.3 - 519.3) * 0.5 * 0.00694$
PATIO (Non-living area)	205	$-\left((472.1 + 472.1) * (58.7 - 221) + (472.1 + 369.9) * (221 - 221.6) + (369.9 + 291.1) * (221.6 - 221.6) + (291.1 + 291.1) * (221.6 - 58.7) + (291.1 + 472.1) * (58.7 - 58.7)) * 0.5 * 0.00694$
LOW CEILING (Non-living area)	5	$-\left((619.6 + 619.6) * (290.8 - 322.3) + (619.6 + 595.1) * (322.3 - 322.3) + (595.1 + 595.1) * (322.3 - 290.8) + (595.1 + 619.6) * (290.8 - 290.8) * 0.5 * 0.00694$
LOW CEILING (Non-living area)	9	$-\left((867.3 + 867.3) * (220.6 - 285.7) + (867.3 + 848.2) * (285.7 - 285.7) + (848.2 + 848.2) * (285.7 - 220.6) + (848.2 + 867.3) * (220.6 - 220.6) * 0.5 * 0.00694$
FIREPLACE (Non-living area)	11	$-\left((542.6 + 542.6) * (199.1 - 221) + (542.6 + 472.1) * (221 - 221) + (472.1 + 472.1) * (221 - 199.1) + (472.1 + 542.6) * (199.1 - 199.1)) * 0.5 * 0.00694$