

Home report

453 Knotty Mill Lane, Crewe, Nottoway County, Virginia, United States, 23930



Total Area: 2609 sq. ft

Floor 1: 2140 sq. ft, Floor 2: 469 sq. ft

Excluded: Garage 636 sq. ft, Storage 54 sq. ft, Screened porch 130 sq. ft, Porch 162 sq. ft, Walls: 247 sq. ft

Property summary

 **2** Floors

 **5** Bedrooms

 **3** Bathrooms

Home report

453 Knotty Mill Lane, Crewe, Nottoway County, Virginia, United States, 23930



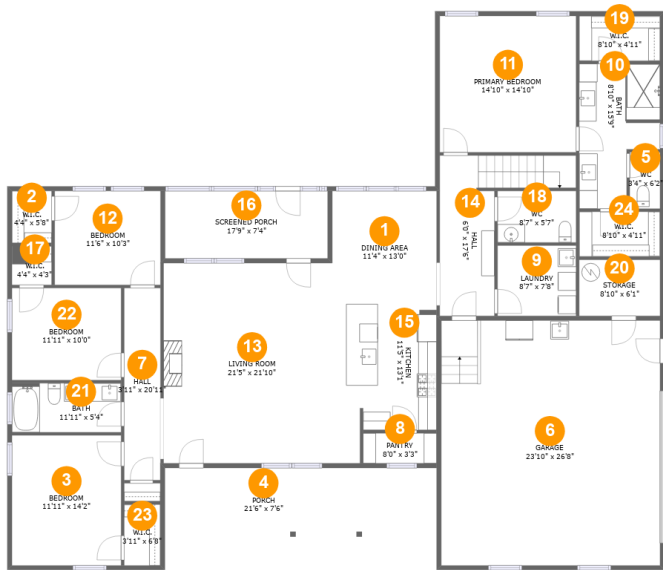
1
Half baths



1
Garages

Home report

453 Knotty Mill Lane, Crewe, Nottoway County, Virginia, United States, 23930



Room dimensions

Floor 1 Total:2140sqft Excluded: 982sqft

#		Max Dimensions	sqft	Included
1	Dining Area	11'4" x 13'0"	147 sq. ft	Yes
2	W.I.C.	4'4" x 5'8"	25 sq. ft	Yes
3	Bedroom	11'11" x 14'2"	169 sq. ft	Yes
4	Porch	21'6" x 7'6"	162 sq. ft	No
5	WC	3'4" x 6'2"	20 sq. ft	Yes
6	Garage	23'10" x 26'8"	636 sq. ft	No
7	Hall	3'11" x 20'11"	83 sq. ft	Yes
8	Pantry	8'0" x 3'3"	26 sq. ft	Yes
9	Laundry	8'7" x 7'8"	66 sq. ft	Yes
10	Bath	8'10" x 15'9"	114 sq. ft	Yes
11	Primary Bedroom	14'10" x 14'10"	221 sq. ft	Yes

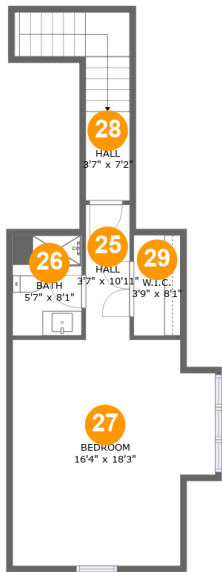
Home report

453 Knotty Mill Lane, Crewe, Nottoway County, Virginia, United States, 23930

#		Max Dimensions	sqft	Included
12	Bedroom	11'6" x 10'3"	118 sq. ft	Yes
13	Living Room	21'5" x 21'10"	419 sq. ft	Yes
14	Hall	6'0" x 17'6"	135 sq. ft	Yes
15	Kitchen	11'5" x 13'1"	140 sq. ft	Yes
16	Screened Porch	17'9" x 7'4"	130 sq. ft	No
17	W.I.C.	4'4" x 4'3"	18 sq. ft	Yes
18	WC	8'7" x 5'7"	48 sq. ft	Yes
19	W.I.C.	8'10" x 4'11"	43 sq. ft	Yes
20	Storage	8'10" x 6'1"	54 sq. ft	No
21	Bath	11'11" x 5'4"	64 sq. ft	Yes
22	Bedroom	11'11" x 10'0"	119 sq. ft	Yes
23	W.I.C.	3'11" x 6'8"	26 sq. ft	Yes
24	W.I.C.	8'10" x 4'11"	43 sq. ft	Yes

Home report

453 Knotty Mill Lane, Crewe, Nottoway County, Virginia, United States, 23930



Room dimensions

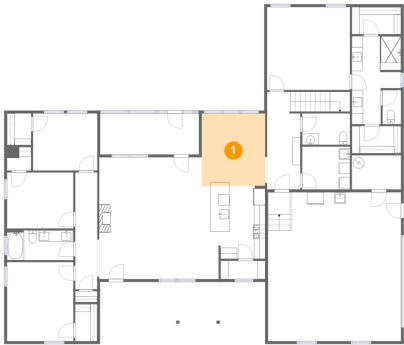
Floor 2

Total:469sqft

Excluded: 0sqft

#		Max Dimensions	sqft	Included
25	Hall	3'7" x 10'11"	39 sq. ft	Yes
26	Bath	5'7" x 8'1"	45 sq. ft	Yes
27	Bedroom	16'4" x 18'3"	270 sq. ft	Yes
28	Hall	3'7" x 7'2"	74 sq. ft	Yes
29	W.I.C.	3'9" x 8'1"	31 sq. ft	Yes

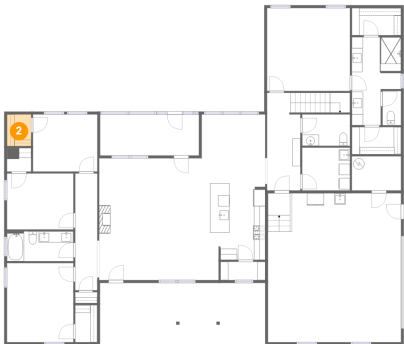
1 Floor 1 - Dining Area



Max Dimensions: 11'4" x 13'0"
Calculated Area: 147 sq. ft
Included: Yes

Heated: Yes
Finished: Yes
Enclosed: Yes
Contiguous: Yes
Permitted: Yes
Wet space: No
Addition: No
Conversion: No

2 Floor 1 - W.I.C.



Max Dimensions: 4'4" x 5'8"
Calculated Area: 25 sq. ft
Included: Yes

Heated: Yes
Finished: Yes
Enclosed: Yes
Contiguous: Yes
Permitted: Yes
Wet space: No
Addition: No
Conversion: No

453 Knotty Mill Lane, Crewe, Nottoway County, Virginia, United States, 23930

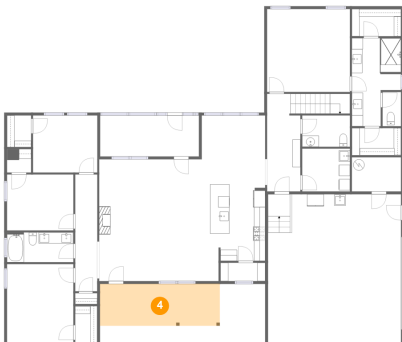
3 Floor 1 - Bedroom



Max Dimensions: 11'11" x 14'2"
Calculated Area: 169 sq. ft
Included: Yes

Heated: Yes
Finished: Yes
Enclosed: Yes
Contiguous: Yes
Permitted: Yes
Wet space: No
Addition: No
Conversion: No

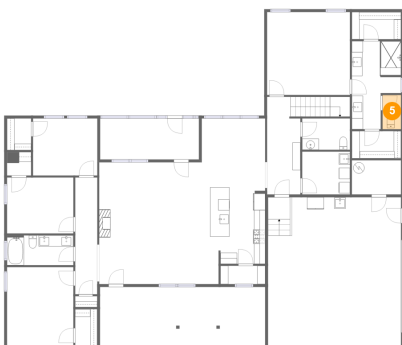
4 Floor 1 - Porch



Max Dimensions: 21'6" x 7'6"
Calculated Area: 162 sq. ft
Included: No

Heated: No
Finished: Yes
Enclosed: No
Contiguous: Yes
Permitted: Yes
Wet space: No
Addition: No
Conversion: No

5 Floor 1 - WC

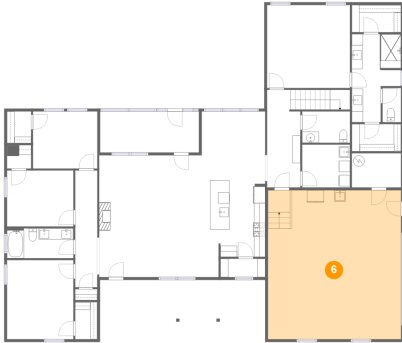


Max Dimensions: 3'4" x 6'2"
Calculated Area: 20 sq. ft
Included: Yes

Heated: Yes
Finished: Yes
Enclosed: Yes
Contiguous: Yes
Permitted: Yes
Wet space: Yes
Addition: No
Conversion: No

453 Knotty Mill Lane, Crewe, Nottoway County, Virginia, United States, 23930

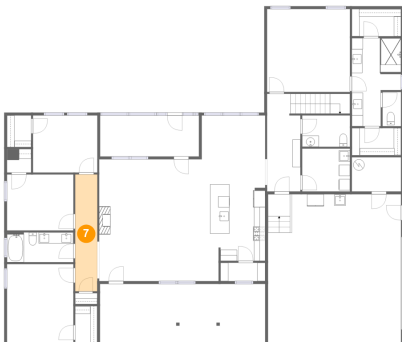
6 Floor 1 - Garage



Max Dimensions: 23'10" x 26'8"
Calculated Area: 636 sq. ft
Included: No

Heated: No
Finished: No
Enclosed: Yes
Contiguous: Yes
Permitted: Yes
Wet space: No
Addition: No
Conversion: No

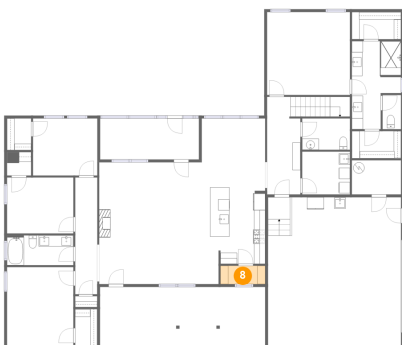
7 Floor 1 - Hall



Max Dimensions: 3'11" x 20'11"
Calculated Area: 83 sq. ft
Included: Yes

Heated: Yes
Finished: Yes
Enclosed: Yes
Contiguous: Yes
Permitted: Yes
Wet space: No
Addition: No
Conversion: No

8 Floor 1 - Pantry

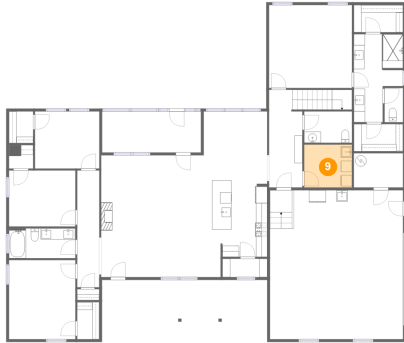


Max Dimensions: 8'0" x 3'3"
Calculated Area: 26 sq. ft
Included: Yes

Heated: Yes
Finished: Yes
Enclosed: Yes
Contiguous: Yes
Permitted: Yes
Wet space: No
Addition: No
Conversion: No

453 Knotty Mill Lane, Crewe, Nottoway County, Virginia, United States, 23930

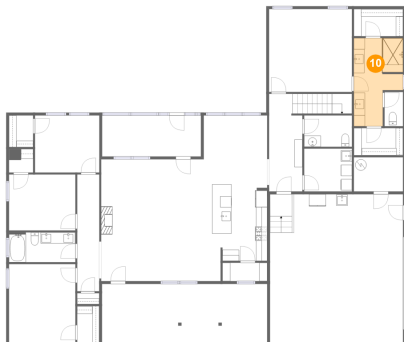
9 Floor 1 - Laundry



Max Dimensions: 8'7" x 7'8"
Calculated Area: 66 sq. ft
Included: Yes

Heated: Yes
Finished: Yes
Enclosed: Yes
Contiguous: Yes
Permitted: Yes
Wet space: No
Addition: No
Conversion: No

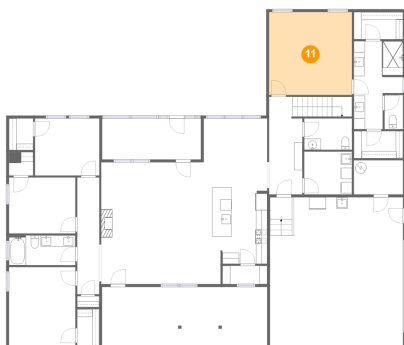
10 Floor 1 - Bath



Max Dimensions: 8'10" x 15'9"
Calculated Area: 114 sq. ft
Included: Yes

Heated: Yes
Finished: Yes
Enclosed: Yes
Contiguous: Yes
Permitted: Yes
Wet space: Yes
Addition: No
Conversion: No

11 Floor 1 - Primary Bedroom

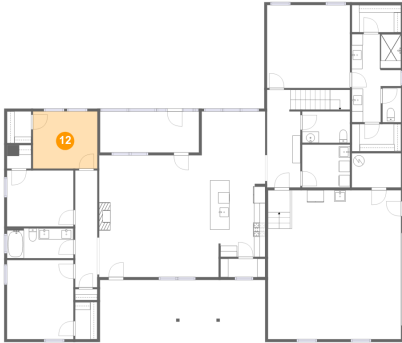


Max Dimensions: 14'10" x 14'10"
Calculated Area: 221 sq. ft
Included: Yes

Heated: Yes
Finished: Yes
Enclosed: Yes
Contiguous: Yes
Permitted: Yes
Wet space: No
Addition: No
Conversion: No

453 Knotty Mill Lane, Crewe, Nottoway County, Virginia, United States, 23930

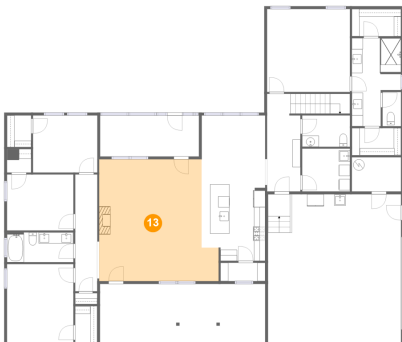
12 Floor 1 - Bedroom



Max Dimensions: 11'6" x 10'3"
Calculated Area: 118 sq. ft
Included: Yes

Heated: Yes
Finished: Yes
Enclosed: Yes
Contiguous: Yes
Permitted: Yes
Wet space: No
Addition: No
Conversion: No

13 Floor 1 - Living Room



Max Dimensions: 21'5" x 21'10"
Calculated Area: 419 sq. ft
Included: Yes

Heated: Yes
Finished: Yes
Enclosed: Yes
Contiguous: Yes
Permitted: Yes
Wet space: No
Addition: No
Conversion: No

14 Floor 1 - Hall

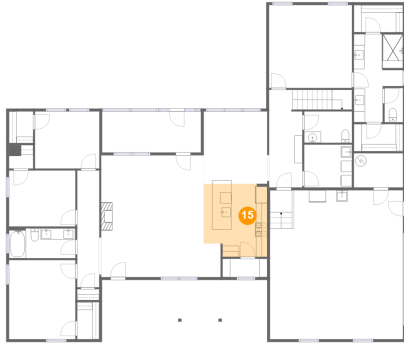


Max Dimensions: 6'0" x 17'6"
Calculated Area: 135 sq. ft
Included: Yes

Heated: Yes
Finished: Yes
Enclosed: Yes
Contiguous: Yes
Permitted: Yes
Wet space: No
Addition: No
Conversion: No

453 Knotty Mill Lane, Crewe, Nottoway County, Virginia, United States, 23930

15 Floor 1 - Kitchen



Max Dimensions: 11'5" x 13'1"
Calculated Area: 140 sq. ft
Included: Yes

Heated: Yes
Finished: Yes
Enclosed: Yes
Contiguous: Yes
Permitted: Yes
Wet space: No
Addition: No
Conversion: No

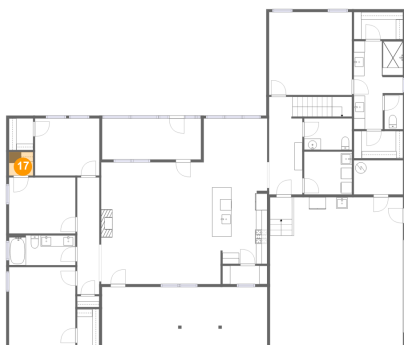
16 Floor 1 - Screened Porch



Max Dimensions: 17'9" x 7'4"
Calculated Area: 130 sq. ft
Included: No

Heated: No
Finished: Yes
Enclosed: No
Contiguous: Yes
Permitted: Yes
Wet space: No
Addition: No
Conversion: No

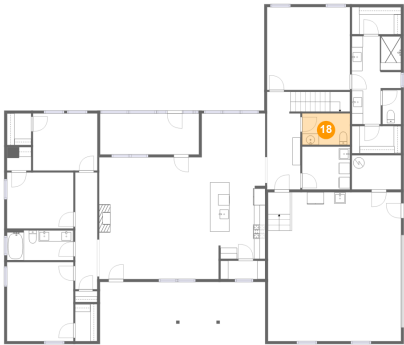
17 Floor 1 - W.I.C.



Max Dimensions: 4'4" x 4'3"
Calculated Area: 18 sq. ft
Included: Yes

Heated: Yes
Finished: Yes
Enclosed: Yes
Contiguous: Yes
Permitted: Yes
Wet space: No
Addition: No
Conversion: No

18 Floor 1 - WC



Max Dimensions: 8'7" x 5'7"
Calculated Area: 48 sq. ft
Included: Yes

Heated: Yes
Finished: Yes
Enclosed: Yes
Contiguous: Yes
Permitted: Yes
Wet space: No
Addition: No
Conversion: No

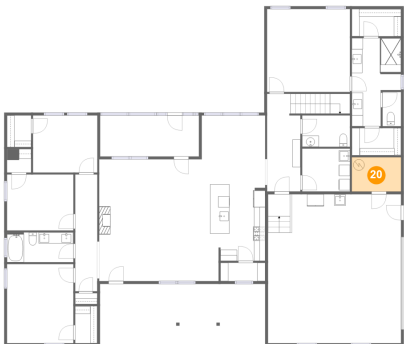
19 Floor 1 - W.I.C.



Max Dimensions: 8'10" x 4'11"
Calculated Area: 43 sq. ft
Included: Yes

Heated: Yes
Finished: Yes
Enclosed: Yes
Contiguous: Yes
Permitted: Yes
Wet space: No
Addition: No
Conversion: No

20 Floor 1 - Storage



Max Dimensions: 8'10" x 6'1"
Calculated Area: 54 sq. ft
Included: No

Heated: No
Finished: No
Enclosed: No
Contiguous: Yes
Permitted: Yes
Wet space: No
Addition: No
Conversion: No

453 Knotty Mill Lane, Crewe, Nottoway County, Virginia, United States, 23930

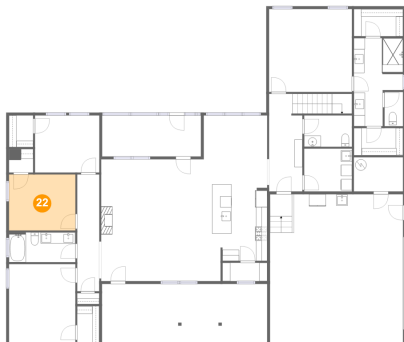
21 Floor 1 - Bath



Max Dimensions: 11'11" x 5'4"
Calculated Area: 64 sq. ft
Included: Yes

Heated: Yes
Finished: Yes
Enclosed: Yes
Contiguous: Yes
Permitted: Yes
Wet space: Yes
Addition: No
Conversion: No

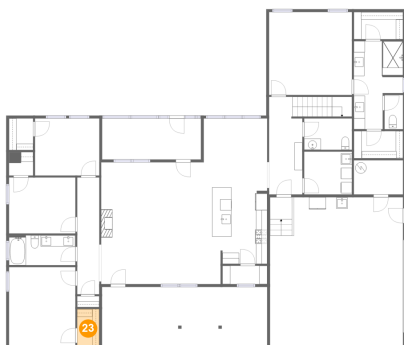
22 Floor 1 - Bedroom



Max Dimensions: 11'11" x 10'0"
Calculated Area: 119 sq. ft
Included: Yes

Heated: Yes
Finished: Yes
Enclosed: Yes
Contiguous: Yes
Permitted: Yes
Wet space: No
Addition: No
Conversion: No

23 Floor 1 - W.I.C.



Max Dimensions: 3'11" x 6'8"
Calculated Area: 26 sq. ft
Included: Yes

Heated: Yes
Finished: Yes
Enclosed: Yes
Contiguous: Yes
Permitted: Yes
Wet space: No
Addition: No
Conversion: No

24 Floor 1 - W.I.C.



Max Dimensions: 8'10" x 4'11"
Calculated Area: 43 sq. ft
Included: Yes

Heated: Yes
Finished: Yes
Enclosed: Yes
Contiguous: Yes
Permitted: Yes
Wet space: No
Addition: No
Conversion: No

25 Floor 2 - Hall



Max Dimensions: 3'7" x 10'11"
Calculated Area: 39 sq. ft
Included: Yes

Heated: Yes
Finished: Yes
Enclosed: Yes
Contiguous: Yes
Permitted: Yes
Wet space: No
Addition: No
Conversion: No

26 Floor 2 - Bath



Max Dimensions: 5'7" x 8'1"
Calculated Area: 45 sq. ft
Included: Yes

Heated: Yes
Finished: Yes
Enclosed: Yes
Contiguous: Yes
Permitted: Yes
Wet space: Yes
Addition: No
Conversion: No

453 Knotty Mill Lane, Crewe, Nottoway County, Virginia, United States, 23930

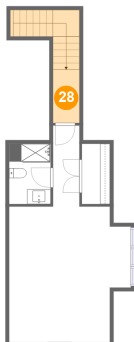
27 Floor 2 - Bedroom



Max Dimensions: 16'4" x 18'3"
Calculated Area: 270 sq. ft
Included: Yes

Heated: Yes
Finished: Yes
Enclosed: Yes
Contiguous: Yes
Permitted: Yes
Wet space: No
Addition: No
Conversion: No

28 Floor 2 - Hall



Max Dimensions: 3'7" x 7'2"
Calculated Area: 74 sq. ft
Included: Yes

Heated: Yes
Finished: Yes
Enclosed: Yes
Contiguous: Yes
Permitted: Yes
Wet space: No
Addition: No
Conversion: No

29 Floor 2 - W.I.C.



Max Dimensions: 3'9" x 8'1"
Calculated Area: 31 sq. ft
Included: Yes

Heated: Yes
Finished: Yes
Enclosed: Yes
Contiguous: Yes
Permitted: Yes
Wet space: No
Addition: No
Conversion: No