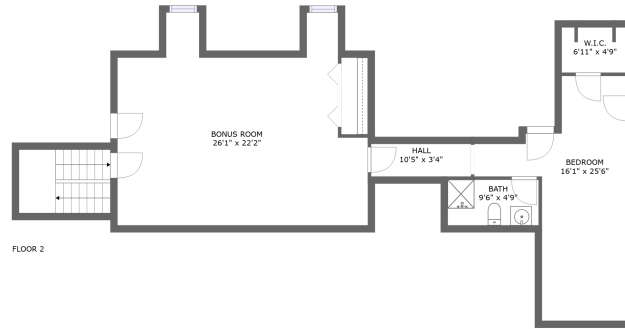



# 1110 Way Thru the Woods, Decatur, Morgan County, Alabama, United States, 35603



## Property summary


 **1** Garages

 **4** Bedrooms

 **3** Bathrooms

 **1** Half baths

 **2** Floors

 **3,611** Gross living area sqft

 **4,385** Total sqft

# 1110 Way Thru the Woods, Decatur, Morgan County, Alabama, United States, 35603



## Room dimensions

Floor 1

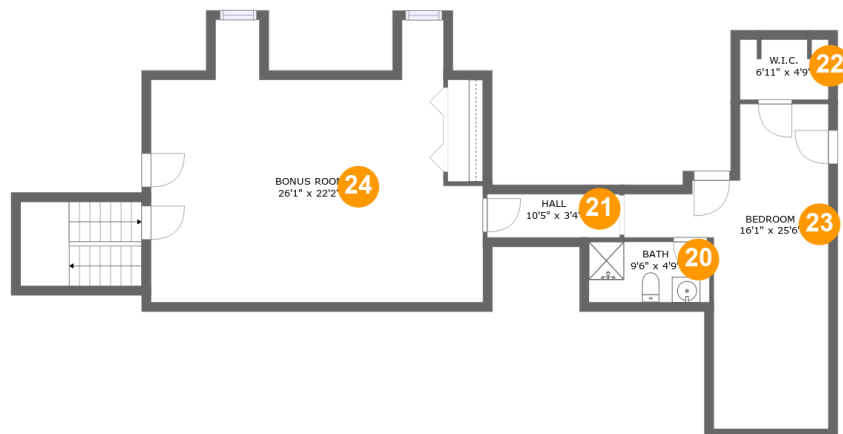
Total sqft: 3290 Living area: 2516

#		Dimensions	sqft	Counted as living area
1	Garage	22'2" x 33'0"	635 sq. ft	No
2	Hall	19'10" x 3'10"	77 sq. ft	Yes
3	Bedroom	11'5" x 15'8"	157 sq. ft	Yes
4	Living Room	26'5" x 16'8"	456 sq. ft	Yes
5	WC	6'1" x 5'11"	36 sq. ft	Yes
6	Bedroom	13'6" x 11'11"	161 sq. ft	Yes
7	Bath	11'5" x 5'10"	66 sq. ft	Yes
8	Primary Bedroom	15'4" x 17'3"	251 sq. ft	Yes
9	Pantry	4'2" x 6'11"	27 sq. ft	No
10	Eat-in Kitchen	18'4" x 14'8"	236 sq. ft	Yes
11	Bath	7'2" x 10'8"	76 sq. ft	Yes

# 1110 Way Thru the Woods, Decatur, Morgan County, Alabama, United States, 35603

#		Dimensions	sqft	Counted as living area
12	Foyer	6'7" x 13'4"	88 sq. ft	Yes
13	Hall	10'2" x 3'2"	96 sq. ft	Yes
14	Laundry	10'8" x 7'6"	72 sq. ft	Yes
15	Bath	9'6" x 4'10"	46 sq. ft	Yes
16	Dining Room	11'10" x 14'8"	164 sq. ft	Yes
17	Hall	10'8" x 3'10"	41 sq. ft	Yes
18	Bath	9'2" x 5'1"	40 sq. ft	Yes
19	Hall	3'8" x 15'0"	55 sq. ft	Yes

# 1110 Way Thru the Woods, Decatur, Morgan County, Alabama, United States, 35603



## Room dimensions

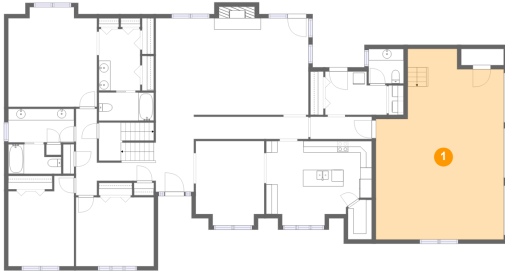
Floor 2

Total sqft: 1095 Living area: 1095

#		Dimensions	sqft	Counted as living area
20	Bath	9'6" x 4'9"	45 sq. ft	Yes
21	Hall	10'5" x 3'4"	35 sq. ft	Yes
22	W.I.C.	6'11" x 4'9"	32 sq. ft	Yes
23	Bedroom	16'1" x 25'6"	243 sq. ft	Yes
24	Bonus Room	26'1" x 22'2"	461 sq. ft	Yes

# 1110 Way Thru the Woods, Decatur, Morgan County, Alabama, United States, 35603

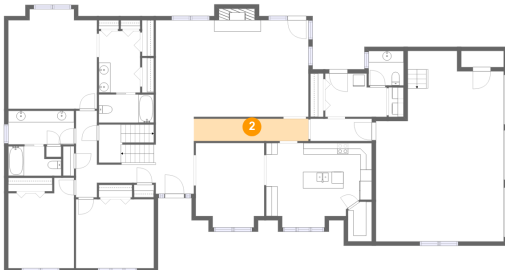
## 1 Floor 1 - Garage



Dimensions: 22'2" x 33'0"  
Area: 635 sq. ft  
Counted as living area: No

Heated: No  
Finished: No  
Enclosed: Yes  
Contiguous: Yes  
Permitted: Yes  
Wet space: No  
Addition: No  
Conversion: No

## 2 Floor 1 - Hall

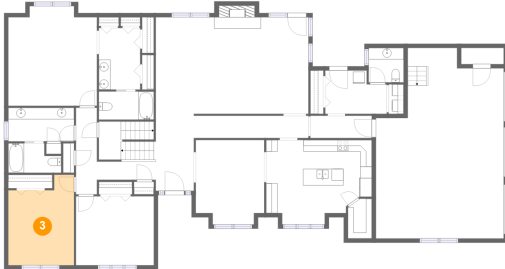


Dimensions: 19'10" x 3'10"  
Area: 77 sq. ft  
Counted as living area: Yes

Heated: Yes  
Finished: Yes  
Enclosed: Yes  
Contiguous: Yes  
Permitted: Yes  
Wet space: No  
Addition: No  
Conversion: No

# 1110 Way Thru the Woods, Decatur, Morgan County, Alabama, United States, 35603

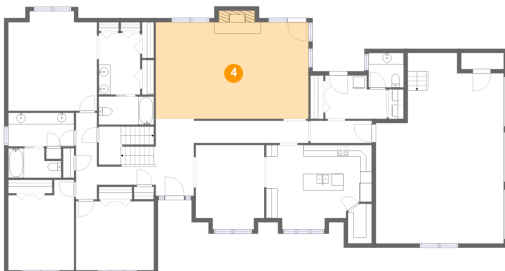
## 3 Floor 1 - Bedroom



Dimensions: 11'5" x 15'8"  
Area: 157 sq. ft  
Counted as living area: Yes

Heated: Yes  
Finished: Yes  
Enclosed: Yes  
Contiguous: Yes  
Permitted: Yes  
Wet space: No  
Addition: No  
Conversion: No

## 4 Floor 1 - Living Room



Dimensions: 26'5" x 16'8"  
Area: 456 sq. ft  
Counted as living area: Yes

Heated: Yes  
Finished: Yes  
Enclosed: Yes  
Contiguous: Yes  
Permitted: Yes  
Wet space: No  
Addition: No  
Conversion: No

## 5 Floor 1 - WC



Dimensions: 6'1" x 5'11"  
Area: 36 sq. ft  
Counted as living area: Yes

Heated: Yes  
Finished: Yes  
Enclosed: Yes  
Contiguous: Yes  
Permitted: Yes  
Wet space: Yes  
Addition: No  
Conversion: No

# 1110 Way Thru the Woods, Decatur, Morgan County, Alabama, United States, 35603

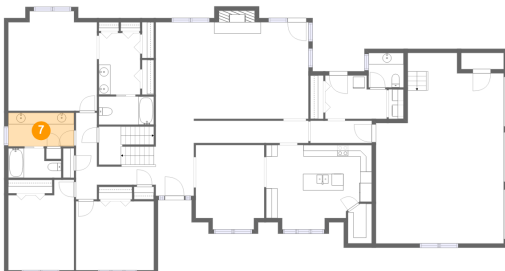
## 6 Floor 1 - Bedroom



Dimensions: 13'6" x 11'11"  
Area: 161 sq. ft  
Counted as living area: Yes

Heated: Yes  
Finished: Yes  
Enclosed: Yes  
Contiguous: Yes  
Permitted: Yes  
Wet space: No  
Addition: No  
Conversion: No

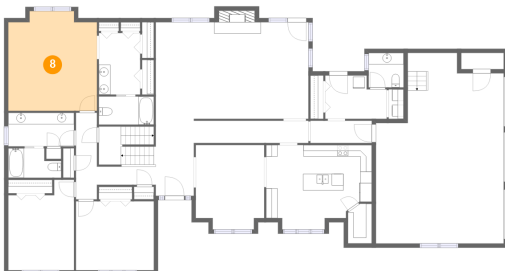
## 7 Floor 1 - Bath



Dimensions: 11'5" x 5'10"  
Area: 66 sq. ft  
Counted as living area: Yes

Heated: Yes  
Finished: Yes  
Enclosed: Yes  
Contiguous: Yes  
Permitted: Yes  
Wet space: Yes  
Addition: No  
Conversion: No

## 8 Floor 1 - Primary Bedroom

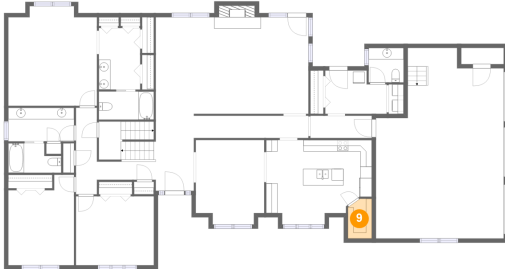


Dimensions: 15'4" x 17'3"  
Area: 251 sq. ft  
Counted as living area: Yes

Heated: Yes  
Finished: Yes  
Enclosed: Yes  
Contiguous: Yes  
Permitted: Yes  
Wet space: No  
Addition: No  
Conversion: No

# 1110 Way Thru the Woods, Decatur, Morgan County, Alabama, United States, 35603

## 9 Floor 1 - Pantry



Dimensions: 4'2" x 6'11"  
Area: 27 sq. ft  
Counted as living area: No

Heated: Yes  
Finished: Yes  
Enclosed: Yes  
Contiguous: Yes  
Permitted: Yes  
Wet space: No  
Addition: No  
Conversion: No

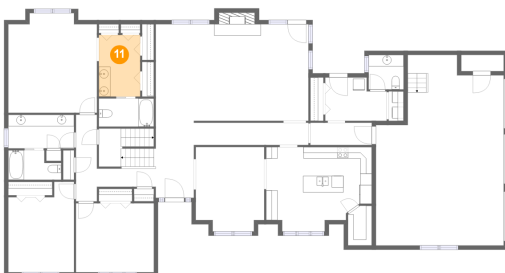
## 10 Floor 1 - Eat-in Kitchen



Dimensions: 18'4" x 14'8"  
Area: 236 sq. ft  
Counted as living area: Yes

Heated: Yes  
Finished: Yes  
Enclosed: Yes  
Contiguous: Yes  
Permitted: Yes  
Wet space: No  
Addition: No  
Conversion: No

## 11 Floor 1 - Bath



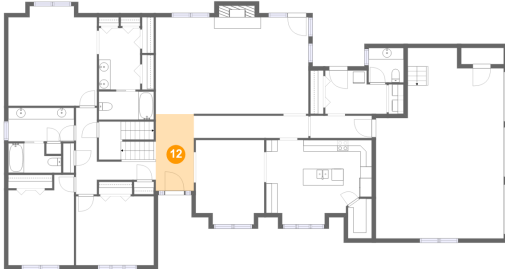
Dimensions: 7'2" x 10'8"  
Area: 76 sq. ft  
Counted as living area: Yes

Heated: Yes  
Finished: Yes  
Enclosed: Yes  
Contiguous: Yes  
Permitted: Yes  
Wet space: Yes  
Addition: No  
Conversion: No



# 1110 Way Thru the Woods, Decatur, Morgan County, Alabama, United States, 35603

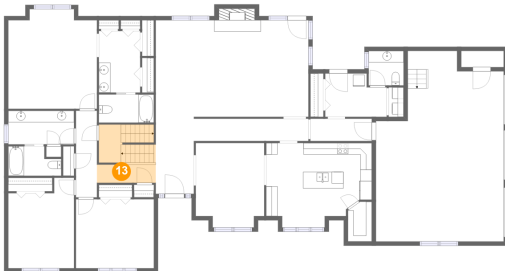
## 12 Floor 1 - Foyer



Dimensions: 6'7" x 13'4"  
Area: 88 sq. ft  
Counted as living area: Yes

Heated: Yes  
Finished: Yes  
Enclosed: Yes  
Contiguous: Yes  
Permitted: Yes  
Wet space: No  
Addition: No  
Conversion: No

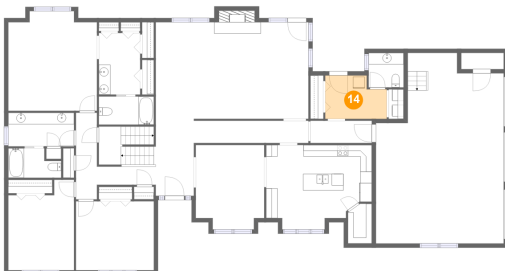
## 13 Floor 1 - Hall



Dimensions: 10'2" x 3'2"  
Area: 96 sq. ft  
Counted as living area: Yes

Heated: Yes  
Finished: Yes  
Enclosed: Yes  
Contiguous: Yes  
Permitted: Yes  
Wet space: No  
Addition: No  
Conversion: No

## 14 Floor 1 - Laundry

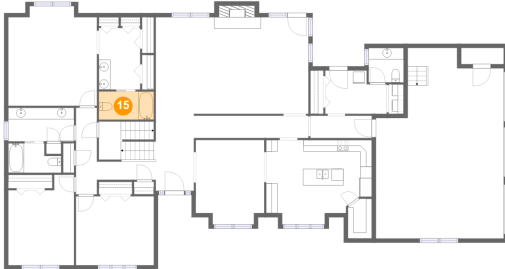


Dimensions: 10'8" x 7'6"  
Area: 72 sq. ft  
Counted as living area: Yes

Heated: Yes  
Finished: Yes  
Enclosed: Yes  
Contiguous: Yes  
Permitted: Yes  
Wet space: No  
Addition: No  
Conversion: No

# 1110 Way Thru the Woods, Decatur, Morgan County, Alabama, United States, 35603

## 15 Floor 1 - Bath



Dimensions: 9'6" x 4'10"  
Area: 46 sq. ft  
Counted as living area: Yes

Heated: Yes  
Finished: Yes  
Enclosed: Yes  
Contiguous: Yes  
Permitted: Yes  
Wet space: Yes  
Addition: No  
Conversion: No

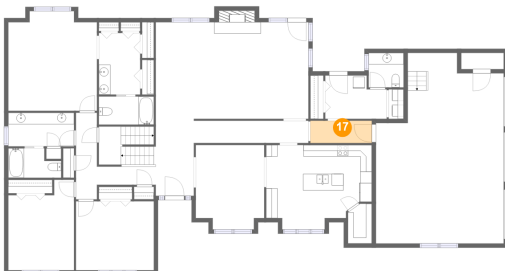
## 16 Floor 1 - Dining Room



Dimensions: 11'10" x 14'8"  
Area: 164 sq. ft  
Counted as living area: Yes

Heated: Yes  
Finished: Yes  
Enclosed: Yes  
Contiguous: Yes  
Permitted: Yes  
Wet space: No  
Addition: No  
Conversion: No

## 17 Floor 1 - Hall

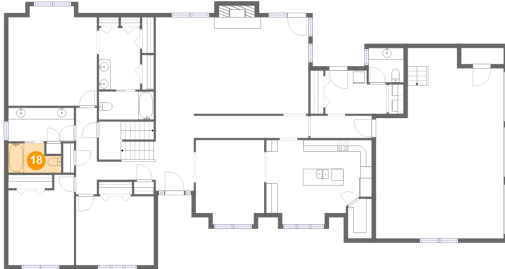


Dimensions: 10'8" x 3'10"  
Area: 41 sq. ft  
Counted as living area: Yes

Heated: Yes  
Finished: Yes  
Enclosed: Yes  
Contiguous: Yes  
Permitted: Yes  
Wet space: No  
Addition: No  
Conversion: No

# 1110 Way Thru the Woods, Decatur, Morgan County, Alabama, United States, 35603

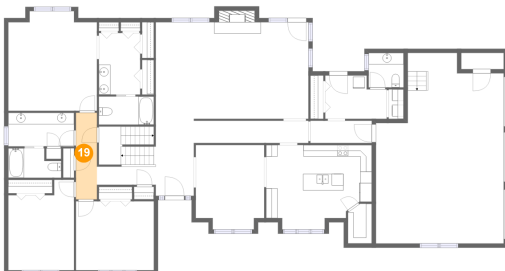
## 18 Floor 1 - Bath



Dimensions: 9'2" x 5'1"  
Area: 40 sq. ft  
Counted as living area: Yes

Heated: Yes  
Finished: Yes  
Enclosed: Yes  
Contiguous: Yes  
Permitted: Yes  
Wet space: Yes  
Addition: No  
Conversion: No

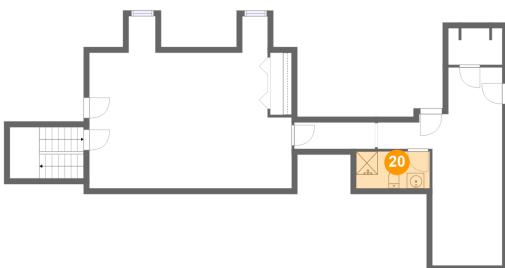
## 19 Floor 1 - Hall



Dimensions: 3'8" x 15'0"  
Area: 55 sq. ft  
Counted as living area: Yes

Heated: Yes  
Finished: Yes  
Enclosed: Yes  
Contiguous: Yes  
Permitted: Yes  
Wet space: No  
Addition: No  
Conversion: No

## 20 Floor 2 - Bath

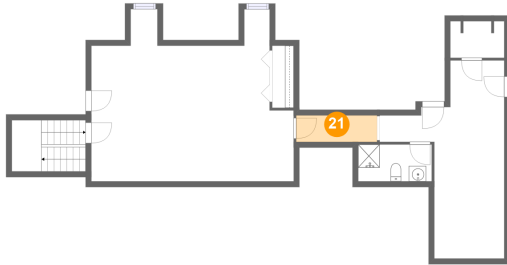


Dimensions: 9'6" x 4'9"  
Area: 45 sq. ft  
Counted as living area: Yes

Heated: Yes  
Finished: Yes  
Enclosed: Yes  
Contiguous: Yes  
Permitted: Yes  
Wet space: Yes  
Addition: No  
Conversion: No

# 1110 Way Thru the Woods, Decatur, Morgan County, Alabama, United States, 35603

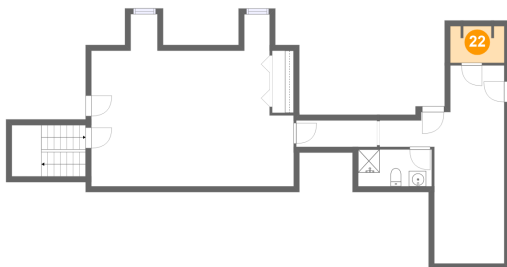
## 21 Floor 2 - Hall



Dimensions: 10'5" x 3'4"  
Area: 35 sq. ft  
Counted as living area: Yes

Heated: Yes  
Finished: Yes  
Enclosed: Yes  
Contiguous: Yes  
Permitted: Yes  
Wet space: No  
Addition: No  
Conversion: No

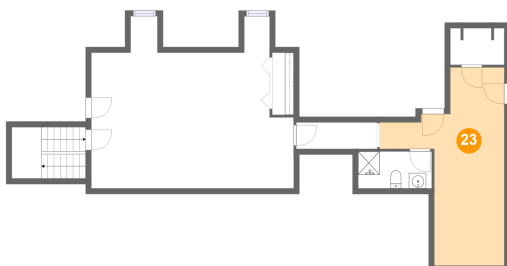
## 22 Floor 2 - W.I.C.



Dimensions: 6'11" x 4'9"  
Area: 32 sq. ft  
Counted as living area: Yes

Heated: Yes  
Finished: Yes  
Enclosed: Yes  
Contiguous: Yes  
Permitted: Yes  
Wet space: No  
Addition: No  
Conversion: No

## 23 Floor 2 - Bedroom

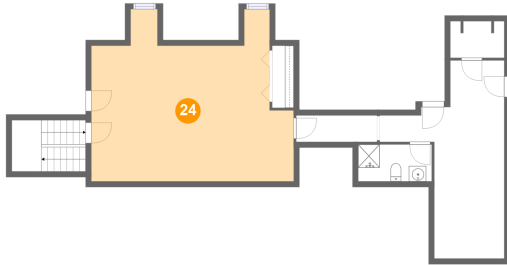


Dimensions: 16'1" x 25'6"  
Area: 243 sq. ft  
Counted as living area: Yes

Heated: Yes  
Finished: Yes  
Enclosed: Yes  
Contiguous: Yes  
Permitted: Yes  
Wet space: No  
Addition: No  
Conversion: No

# 1110 Way Thru the Woods, Decatur, Morgan County, Alabama, United States, 35603

## 24 Floor 2 - Bonus Room



Dimensions: 26'1" x 22'2"  
Area: 461 sq. ft  
Counted as living area: Yes

Heated: Yes  
Finished: Yes  
Enclosed: Yes  
Contiguous: Yes  
Permitted: Yes  
Wet space: No  
Addition: No  
Conversion: No