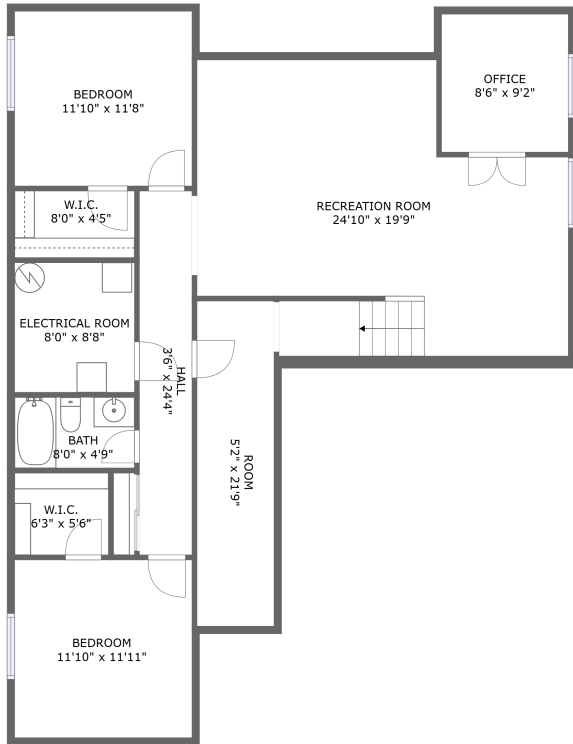
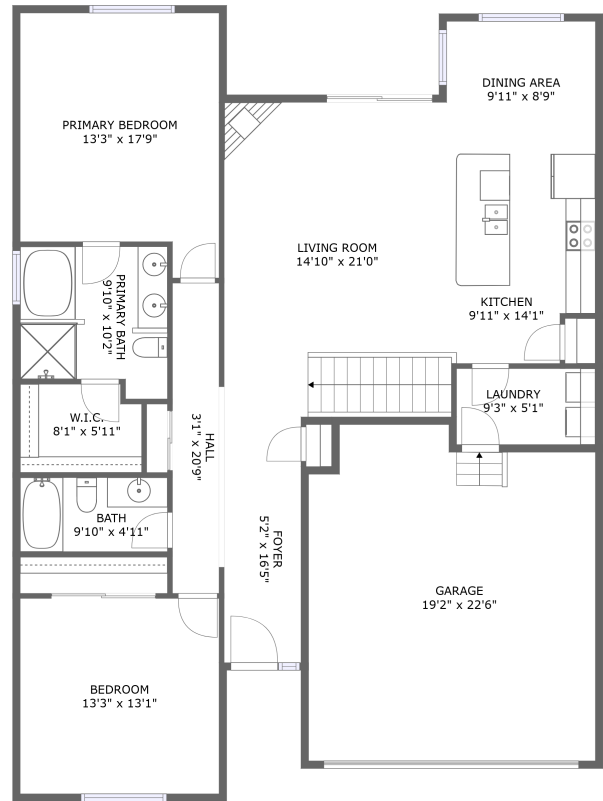


# 1734 Sandy Shore Ln, Monument, CO, US



FLOOR 1




FLOOR 2

## Property Summary


 **1** garages

 **4** bedrooms

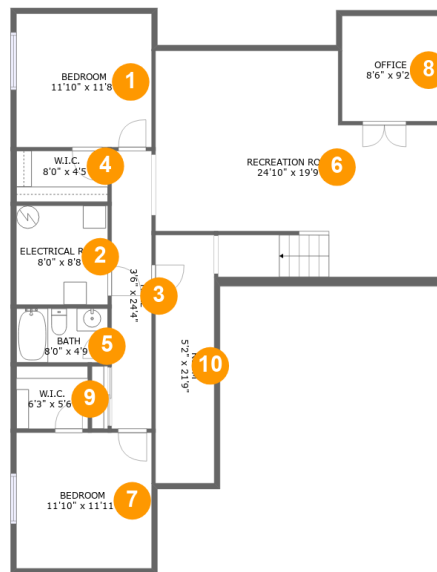
 **3** bathrooms

 **0** half baths

 **2** floors

 **2,495** Gross Living Area sqft

 **3,121** total sqft

**1734 Sandy Shore Ln, Monument, CO, US****Room Dimensions****Floor 1****Total sqft: 1292****Living area: 1095**

#	Room name	Dimensions	Area (sqft)	Counted as Living Area
1	Bedroom	11'10" x 11'8"	138 sq. ft	Yes
2	Electrical Room	8'0" x 8'8"	69 sq. ft	No
3	Hall	3'6" x 24'4"	85 sq. ft	Yes
4	W.i.c.	8'0" x 4'5"	36 sq. ft	Yes
5	Bath	8'0" x 4'9"	38 sq. ft	Yes
6	Recreation Room	24'10" x 19'9"	409 sq. ft	Yes
7	Bedroom	11'10" x 11'11"	141 sq. ft	Yes
8	Office	8'6" x 9'2"	78 sq. ft	Yes
9	W.i.c.	6'3" x 5'6"	34 sq. ft	Yes
10	Room	5'2" x 21'9"	112 sq. ft	No

**1734 Sandy Shore Ln, Monument, CO, US****Room Dimensions****Floor 2****Total sqft: 1829****Living area: 1400**

#	Room name	Dimensions	Area (sqft)	Counted as Living Area
11	Laundry	9'3" x 5'1"	47 sq. ft	Yes
12	W.i.c.	8'1" x 5'11"	46 sq. ft	Yes
13	Kitchen	9'11" x 14'1"	134 sq. ft	Yes
14	Bedroom	13'3" x 13'1"	173 sq. ft	Yes
15	Garage	19'2" x 22'6"	406 sq. ft	No
16	Primary Bedroom	13'3" x 17'9"	211 sq. ft	Yes
17	Bath	9'10" x 4'11"	49 sq. ft	Yes
18	Foyer	5'2" x 16'5"	84 sq. ft	Yes
19	Primary Bath	9'10" x 10'2"	91 sq. ft	Yes
20	Hall	3'1" x 20'9"	65 sq. ft	Yes
21	Dining Area	9'11" x 8'9"	87 sq. ft	Yes

Scan captured on Fri, 11 Oct 2024 21:33:19 GMT

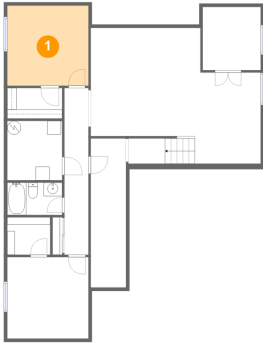
Information is calculated by CubiCasa technology; deemed highly reliable but not guaranteed.

**1734 Sandy Shore Ln, Monument, CO, US**

#	Room name	Dimensions	Area (sqft)	Counted as Living Area
22	Living Room	14'10" x 21'0"	312 sq. ft	Yes

# 1734 Sandy Shore Ln, Monument, CO, US

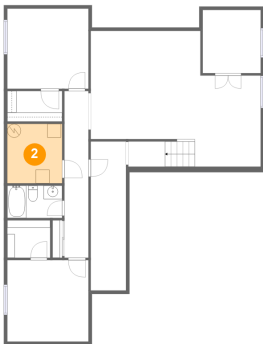
## 1 Floor 1 - Bedroom



Dimensions: 11'10" x 11'8"  
Area: 138 sq. ft  
Counted as Living Area:  
Yes

Heated: Yes  
Finished: Yes  
Enclosed: Yes  
Contiguous:  
Yes  
Permitted: Yes  
Wet Space: No  
Addition: No  
Conversion: No

## 2 Floor 1 - Electrical Room

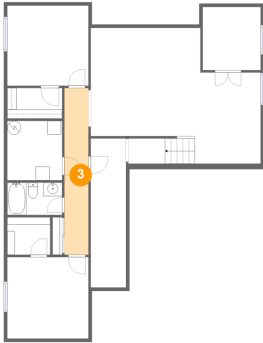


Dimensions: 8'0" x 8'8"  
Area: 69 sq. ft  
Counted as Living Area: No

Heated: No  
Finished: No  
Enclosed: Yes  
Contiguous: Yes  
Permitted: Yes  
Wet Space: No  
Addition: No  
Conversion: No

# 1734 Sandy Shore Ln, Monument, CO, US

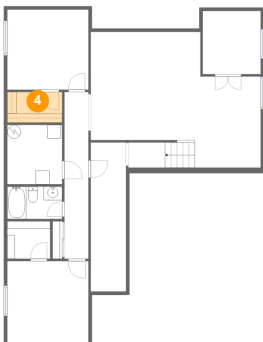
## 3 Floor 1 - Hall



Dimensions: 3'6" x 24'4"  
Area: 85 sq. ft  
Counted as Living Area:  
Yes

Heated: Yes  
Finished: Yes  
Enclosed: Yes  
Contiguous:  
Yes  
Permitted: Yes  
Wet Space: No  
Addition: No  
Conversion: No

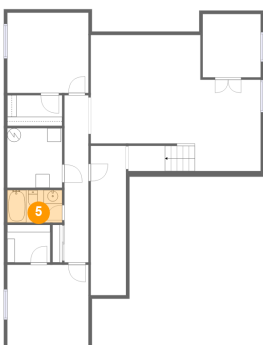
## 4 Floor 1 - W.i.c.



Dimensions: 8'0" x 4'5"  
Area: 36 sq. ft  
Counted as Living Area:  
Yes

Heated: Yes  
Finished: Yes  
Enclosed: Yes  
Contiguous:  
Yes  
Permitted: Yes  
Wet Space: No  
Addition: No  
Conversion: No

## 5 Floor 1 - Bath

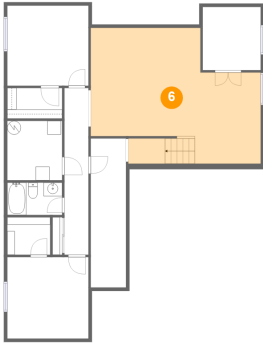


Dimensions: 8'0" x 4'9"  
Area: 38 sq. ft  
Counted as Living Area:  
Yes

Heated: Yes  
Finished: Yes  
Enclosed: Yes  
Contiguous:  
Yes  
Permitted: Yes  
Wet Space: Yes  
Addition: No  
Conversion: No

# 1734 Sandy Shore Ln, Monument, CO, US

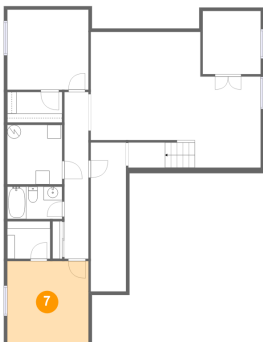
## 6 Floor 1 - Recreation Room



Dimensions: 24'10" x 19'9"  
Area: 409 sq. ft  
Counted as Living Area:  
Yes

Heated: Yes  
Finished: Yes  
Enclosed: Yes  
Contiguous:  
Yes  
Permitted: Yes  
Wet Space: No  
Addition: No  
Conversion: No

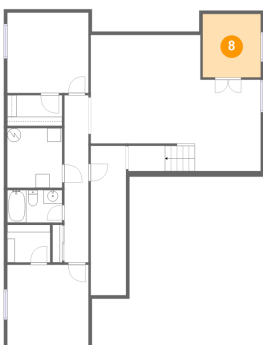
## 7 Floor 1 - Bedroom



Dimensions: 11'10" x 11'11"  
Area: 141 sq. ft  
Counted as Living Area:  
Yes

Heated: Yes  
Finished: Yes  
Enclosed: Yes  
Contiguous:  
Yes  
Permitted: Yes  
Wet Space: No  
Addition: No  
Conversion: No

## 8 Floor 1 - Office

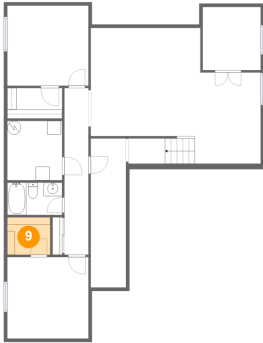


Dimensions: 8'6" x 9'2"  
Area: 78 sq. ft  
Counted as Living Area:  
Yes

Heated: Yes  
Finished: Yes  
Enclosed: Yes  
Contiguous:  
Yes  
Permitted: Yes  
Wet Space: No  
Addition: No  
Conversion: No

# 1734 Sandy Shore Ln, Monument, CO, US

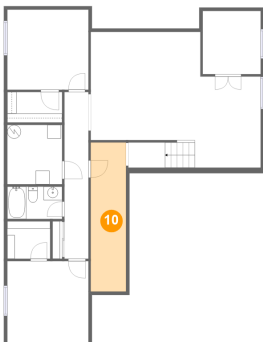
## 9 Floor 1 - W.i.c.



Dimensions: 6'3" x 5'6"  
Area: 34 sq. ft  
Counted as Living Area:  
Yes

Heated: Yes  
Finished: Yes  
Enclosed: Yes  
Contiguous:  
Yes  
Permitted: Yes  
Wet Space: No  
Addition: No  
Conversion: No

## 10 Floor 1 - Room



Dimensions: 5'2" x 21'9"  
Area: 112 sq. ft  
Counted as Living Area: No

Heated: Yes  
Finished: No  
Enclosed: Yes  
Contiguous: Yes  
Permitted: Yes  
Wet Space: No  
Addition: No  
Conversion: No

## 11 Floor 2 - Laundry



Dimensions: 9'3" x 5'1"  
Area: 47 sq. ft  
Counted as Living Area:  
Yes

Heated: Yes  
Finished: Yes  
Enclosed: Yes  
Contiguous:  
Yes  
Permitted: Yes  
Wet Space: No  
Addition: No  
Conversion: No



**1734 Sandy Shore Ln, Monument, CO, US****12 Floor 2 - W.i.c.**

Dimensions: 8'1" x 5'11"  
Area: 46 sq. ft  
Counted as Living Area:  
Yes

Heated: Yes  
Finished: Yes  
Enclosed: Yes  
Contiguous:  
Yes  
Permitted: Yes  
Wet Space: No  
Addition: No  
Conversion: No

**13 Floor 2 - Kitchen**

Dimensions: 9'11" x 14'1"  
Area: 134 sq. ft  
Counted as Living Area:  
Yes

Heated: Yes  
Finished: Yes  
Enclosed: Yes  
Contiguous:  
Yes  
Permitted: Yes  
Wet Space: No  
Addition: No  
Conversion: No

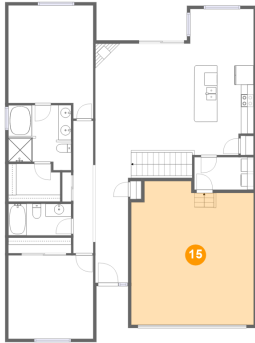
**14 Floor 2 - Bedroom**

Dimensions: 13'3" x 13'1"  
Area: 173 sq. ft  
Counted as Living Area:  
Yes

Heated: Yes  
Finished: Yes  
Enclosed: Yes  
Contiguous:  
Yes  
Permitted: Yes  
Wet Space: No  
Addition: No  
Conversion: No

# 1734 Sandy Shore Ln, Monument, CO, US

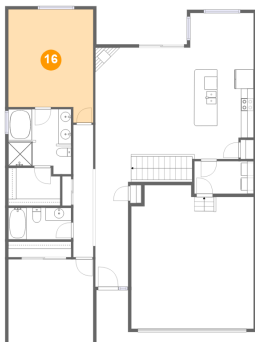
## 15 Floor 2 - Garage



Dimensions: 19'2" x 22'6"  
Area: 406 sq. ft  
Counted as Living Area: No

Heated: No  
Finished: No  
Enclosed: Yes  
Contiguous: Yes  
Permitted: Yes  
Wet Space: No  
Addition: No  
Conversion: No

## 16 Floor 2 - Primary Bedroom



Dimensions: 13'3" x 17'9"  
Area: 211 sq. ft  
Counted as Living Area: Yes

Heated: Yes  
Finished: Yes  
Enclosed: Yes  
Contiguous: Yes  
Permitted: Yes  
Wet Space: No  
Addition: No  
Conversion: No

## 17 Floor 2 - Bath



Dimensions: 9'10" x 4'11"  
Area: 49 sq. ft  
Counted as Living Area: Yes

Heated: Yes  
Finished: Yes  
Enclosed: Yes  
Contiguous: Yes  
Permitted: Yes  
Wet Space: Yes  
Addition: No  
Conversion: No

# 1734 Sandy Shore Ln, Monument, CO, US

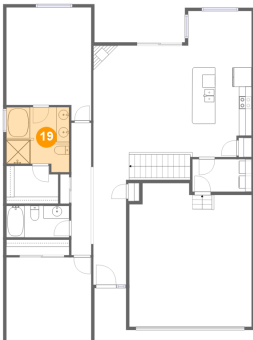
## 18 Floor 2 - Foyer



Dimensions: 5'2" x 16'5"  
Area: 84 sq. ft  
Counted as Living Area:  
Yes

Heated: Yes  
Finished: Yes  
Enclosed: Yes  
Contiguous:  
Yes  
Permitted: Yes  
Wet Space: No  
Addition: No  
Conversion: No

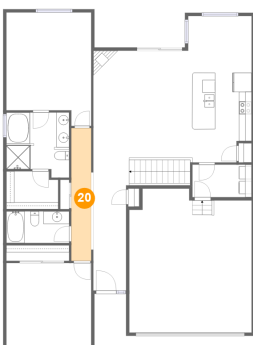
## 19 Floor 2 - Primary Bath



Dimensions: 9'10" x 10'2"  
Area: 91 sq. ft  
Counted as Living Area:  
Yes

Heated: Yes  
Finished: Yes  
Enclosed: Yes  
Contiguous:  
Yes  
Permitted: Yes  
Wet Space: Yes  
Addition: No  
Conversion: No

## 20 Floor 2 - Hall

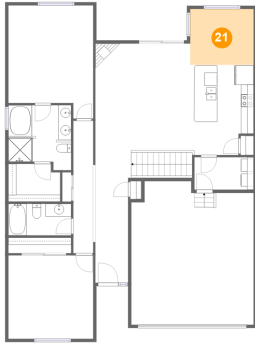


Dimensions: 3'1" x 20'9"  
Area: 65 sq. ft  
Counted as Living Area:  
Yes

Heated: Yes  
Finished: Yes  
Enclosed: Yes  
Contiguous:  
Yes  
Permitted: Yes  
Wet Space: No  
Addition: No  
Conversion: No

# 1734 Sandy Shore Ln, Monument, CO, US

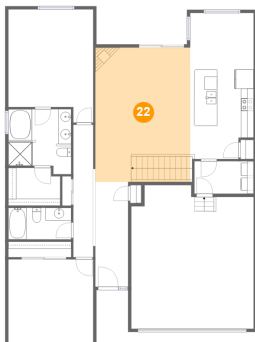
## 21 Floor 2 - Dining Area



Dimensions: 9'11" x 8'9"  
Area: 87 sq. ft  
Counted as Living Area:  
Yes

Heated: Yes  
Finished: Yes  
Enclosed: Yes  
Contiguous:  
Yes  
Permitted: Yes  
Wet Space: No  
Addition: No  
Conversion: No

## 22 Floor 2 - Living Room



Dimensions: 14'10" x 21'0"  
Area: 312 sq. ft  
Counted as Living Area:  
Yes

Heated: Yes  
Finished: Yes  
Enclosed: Yes  
Contiguous:  
Yes  
Permitted: Yes  
Wet Space: No  
Addition: No  
Conversion: No