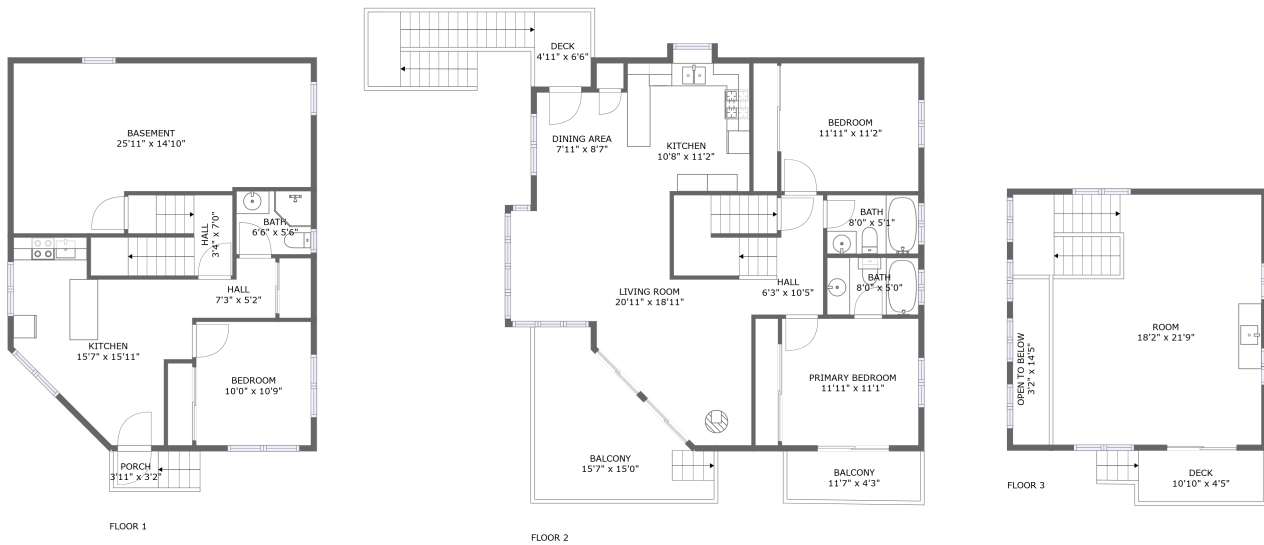



338 Norfolk St, Cambria, CA, US



Property summary

 **0** Garages

 **3** Bedrooms

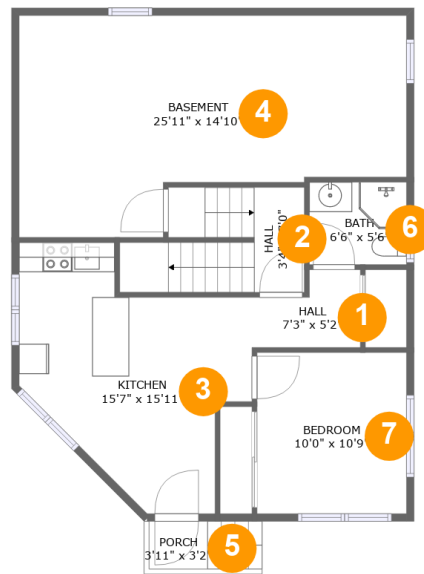
 **3** Bathrooms

 **0** Half baths

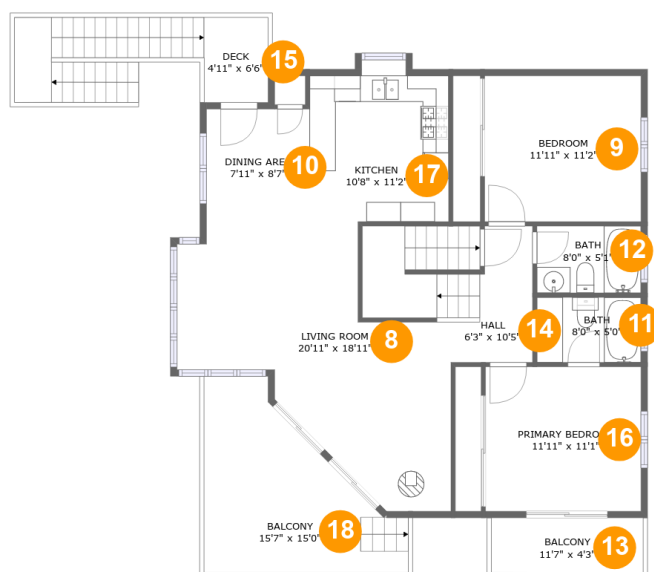
 **3** Floors

 **1,623** Gross living area sqft

 **2,792** Total sqft

338 Norfolk St, Cambria, CA, US**Room dimensions****Floor 1****Total sqft: 895 Living area: 535**

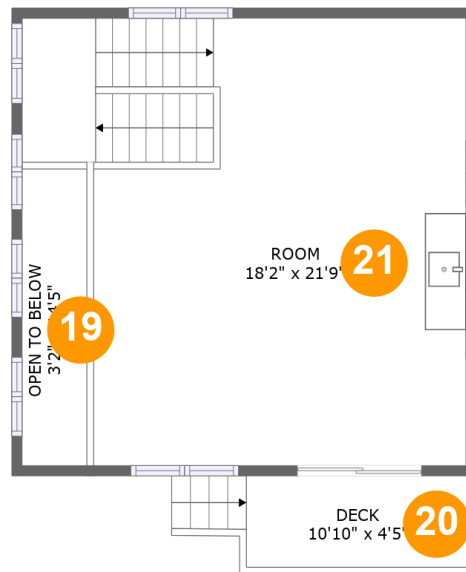
#		Dimensions	sqft	Counted as living area
1	Hall	7'3" x 5'2"	31 sq. ft	Yes
2	Hall	3'4" x 7'0"	73 sq. ft	Yes
3	Kitchen	15'7" x 15'11"	193 sq. ft	Yes
4	Basement	25'11" x 14'10"	322 sq. ft	No
5	Porch	3'11" x 3'2"	12 sq. ft	No
6	Bath	6'6" x 5'6"	36 sq. ft	Yes
7	Bedroom	10'0" x 10'9"	108 sq. ft	Yes

338 Norfolk St, Cambria, CA, US**Room dimensions**

Floor 2

Total sqft: 1333 Living area: 1088

#		Dimensions	sqft	Counted as living area
8	Living Room	20'11" x 18'11"	335 sq. ft	Yes
9	Bedroom	11'11" x 11'2"	133 sq. ft	Yes
10	Dining Area	7'11" x 8'7"	68 sq. ft	Yes
11	Bath	8'0" x 5'0"	40 sq. ft	Yes
12	Bath	8'0" x 5'1"	41 sq. ft	Yes
13	Balcony	11'7" x 4'3"	50 sq. ft	No
14	Hall	6'3" x 10'5"	56 sq. ft	Yes
15	Deck	4'11" x 6'6"	32 sq. ft	No
16	Primary Bedroom	11'11" x 11'1"	131 sq. ft	Yes
17	Kitchen	10'8" x 11'2"	118 sq. ft	Yes
18	Balcony	15'7" x 15'0"	158 sq. ft	No

338 Norfolk St, Cambria, CA, US**Room dimensions**

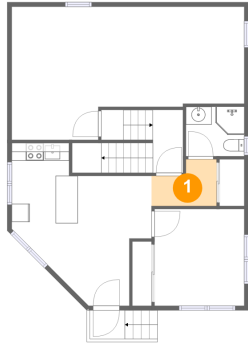
Floor 3

Total sqft: 564

Living area: 0

#		Dimensions	sqft	Counted as living area
19	Open To Below	3'2" x 14'5"	46 sq. ft	No
20	Deck	10'10" x 4'5"	48 sq. ft	No
21	Room	18'2" x 21'9"	426 sq. ft	No

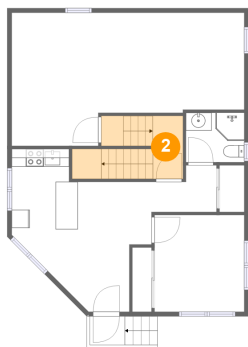
1 Floor 1 - Hall



Dimensions: 7'3" x 5'2"
Area: 31 sq. ft
Counted as living area: Yes

Heated: Yes
Finished: Yes
Enclosed: Yes
Contiguous: Yes
Permitted: Yes
Wet space: No
Addition: No
Conversion: No

2 Floor 1 - Hall



Dimensions: 3'4" x 7'0"
Area: 73 sq. ft
Counted as living area: Yes

Heated: Yes
Finished: Yes
Enclosed: Yes
Contiguous: Yes
Permitted: Yes
Wet space: No
Addition: No
Conversion: No

338 Norfolk St, Cambria, CA, US

3 Floor 1 - Kitchen



Dimensions: 15'7" x 15'11"
Area: 193 sq. ft
Counted as living area: Yes

Heated: Yes
Finished: Yes
Enclosed: Yes
Contiguous: Yes
Permitted: Yes
Wet space: No
Addition: No
Conversion: No

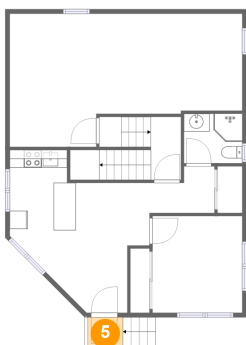
4 Floor 1 - Basement



Dimensions: 25'11" x 14'10"
Area: 322 sq. ft
Counted as living area: No

Heated: Yes
Finished: No
Enclosed: Yes
Contiguous: Yes
Permitted: Yes
Wet space: No
Addition: No
Conversion: No

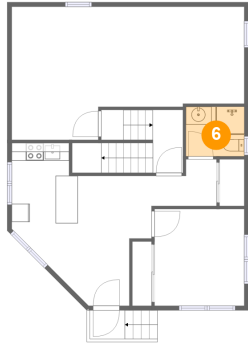
5 Floor 1 - Porch



Dimensions: 3'11" x 3'2"
Area: 12 sq. ft
Counted as living area: No

Heated: No
Finished: Yes
Enclosed: No
Contiguous: Yes
Permitted: Yes
Wet space: No
Addition: No
Conversion: No

6 Floor 1 - Bath



Dimensions: 6'6" x 5'6"
Area: 36 sq. ft
Counted as living area: Yes

Heated: Yes
Finished: Yes
Enclosed: Yes
Contiguous: Yes
Permitted: Yes
Wet space: Yes
Addition: No
Conversion: No

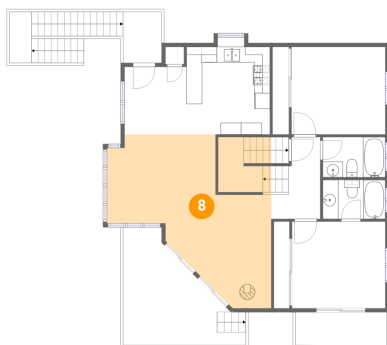
7 Floor 1 - Bedroom



Dimensions: 10'0" x 10'9"
Area: 108 sq. ft
Counted as living area: Yes

Heated: Yes
Finished: Yes
Enclosed: Yes
Contiguous: Yes
Permitted: Yes
Wet space: No
Addition: No
Conversion: No

8 Floor 2 - Living Room

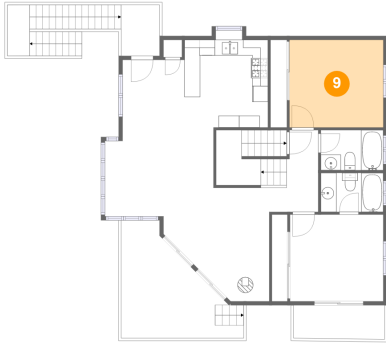


Dimensions: 20'11" x 18'11"
Area: 335 sq. ft
Counted as living area: Yes

Heated: Yes
Finished: Yes
Enclosed: Yes
Contiguous: Yes
Permitted: Yes
Wet space: No
Addition: No
Conversion: No

338 Norfolk St, Cambria, CA, US

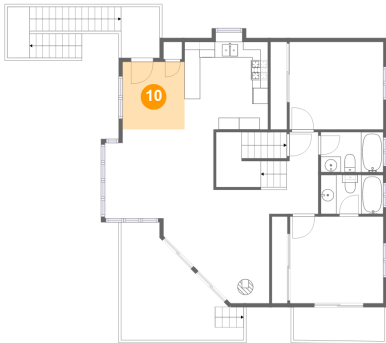
9 Floor 2 - Bedroom



Dimensions: 11'11" x 11'2"
Area: 133 sq. ft
Counted as living area: Yes

Heated: Yes
Finished: Yes
Enclosed: Yes
Contiguous: Yes
Permitted: Yes
Wet space: No
Addition: No
Conversion: No

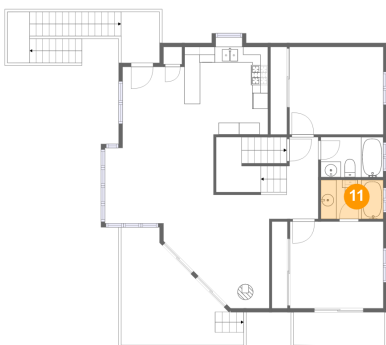
10 Floor 2 - Dining Area



Dimensions: 7'11" x 8'7"
Area: 68 sq. ft
Counted as living area: Yes

Heated: Yes
Finished: Yes
Enclosed: Yes
Contiguous: Yes
Permitted: Yes
Wet space: No
Addition: No
Conversion: No

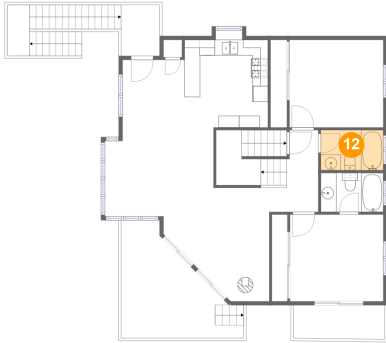
11 Floor 2 - Bath



Dimensions: 8'0" x 5'0"
Area: 40 sq. ft
Counted as living area: Yes

Heated: Yes
Finished: Yes
Enclosed: Yes
Contiguous: Yes
Permitted: Yes
Wet space: Yes
Addition: No
Conversion: No

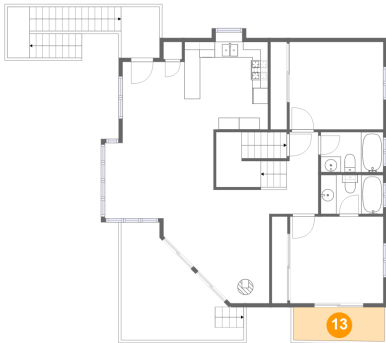
12 Floor 2 - Bath



Dimensions: 8'0" x 5'1"
Area: 41 sq. ft
Counted as living area: Yes

Heated: Yes
Finished: Yes
Enclosed: Yes
Contiguous: Yes
Permitted: Yes
Wet space: Yes
Addition: No
Conversion: No

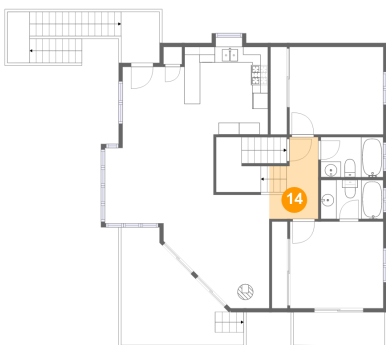
13 Floor 2 - Balcony



Dimensions: 11'7" x 4'3"
Area: 50 sq. ft
Counted as living area: No

Heated: No
Finished: Yes
Enclosed: No
Contiguous: Yes
Permitted: Yes
Wet space: No
Addition: No
Conversion: No

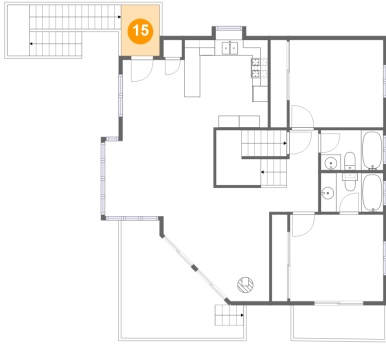
14 Floor 2 - Hall



Dimensions: 6'3" x 10'5"
Area: 56 sq. ft
Counted as living area: Yes

Heated: Yes
Finished: Yes
Enclosed: Yes
Contiguous: Yes
Permitted: Yes
Wet space: No
Addition: No
Conversion: No

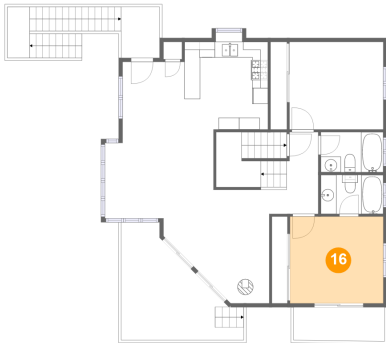
15 Floor 2 - Deck



Dimensions: 4'11" x 6'6"
Area: 32 sq. ft
Counted as living area: No

Heated: No
Finished: Yes
Enclosed: No
Contiguous: Yes
Permitted: Yes
Wet space: No
Addition: No
Conversion: No

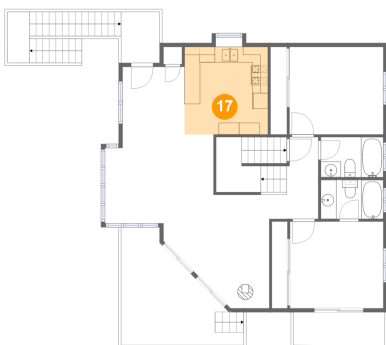
16 Floor 2 - Primary Bedroom



Dimensions: 11'11" x 11'1"
Area: 131 sq. ft
Counted as living area: Yes

Heated: Yes
Finished: Yes
Enclosed: Yes
Contiguous: Yes
Permitted: Yes
Wet space: No
Addition: No
Conversion: No

17 Floor 2 - Kitchen

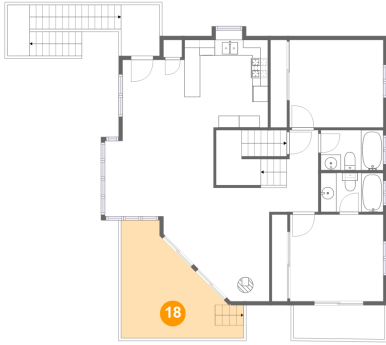


Dimensions: 10'8" x 11'2"
Area: 118 sq. ft
Counted as living area: Yes

Heated: Yes
Finished: Yes
Enclosed: Yes
Contiguous: Yes
Permitted: Yes
Wet space: No
Addition: No
Conversion: No

338 Norfolk St, Cambria, CA, US

18 Floor 2 - Balcony



Dimensions: 15'7" x 15'0"
Area: 158 sq. ft
Counted as living area: No

Heated: No
Finished: Yes
Enclosed: No
Contiguous: Yes
Permitted: Yes
Wet space: No
Addition: No
Conversion: No

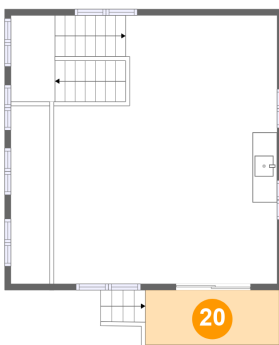
19 Floor 3 - Open To Below



Dimensions: 3'2" x 14'5"
Area: 46 sq. ft
Counted as living area: No

Heated: No
Finished: No
Enclosed: No
Contiguous: Yes
Permitted: No
Wet space: No
Addition: No
Conversion: No

20 Floor 3 - Deck



Dimensions: 10'10" x 4'5"
Area: 48 sq. ft
Counted as living area: No

Heated: No
Finished: Yes
Enclosed: No
Contiguous: Yes
Permitted: Yes
Wet space: No
Addition: No
Conversion: No

21 Floor 3 - Room



Dimensions: 18'2" x 21'9"
Area: 426 sq. ft
Counted as living area: No

Heated: Yes
Finished: Yes
Enclosed: Yes
Contiguous: No
Permitted: Yes
Wet space: No
Addition: No
Conversion: No