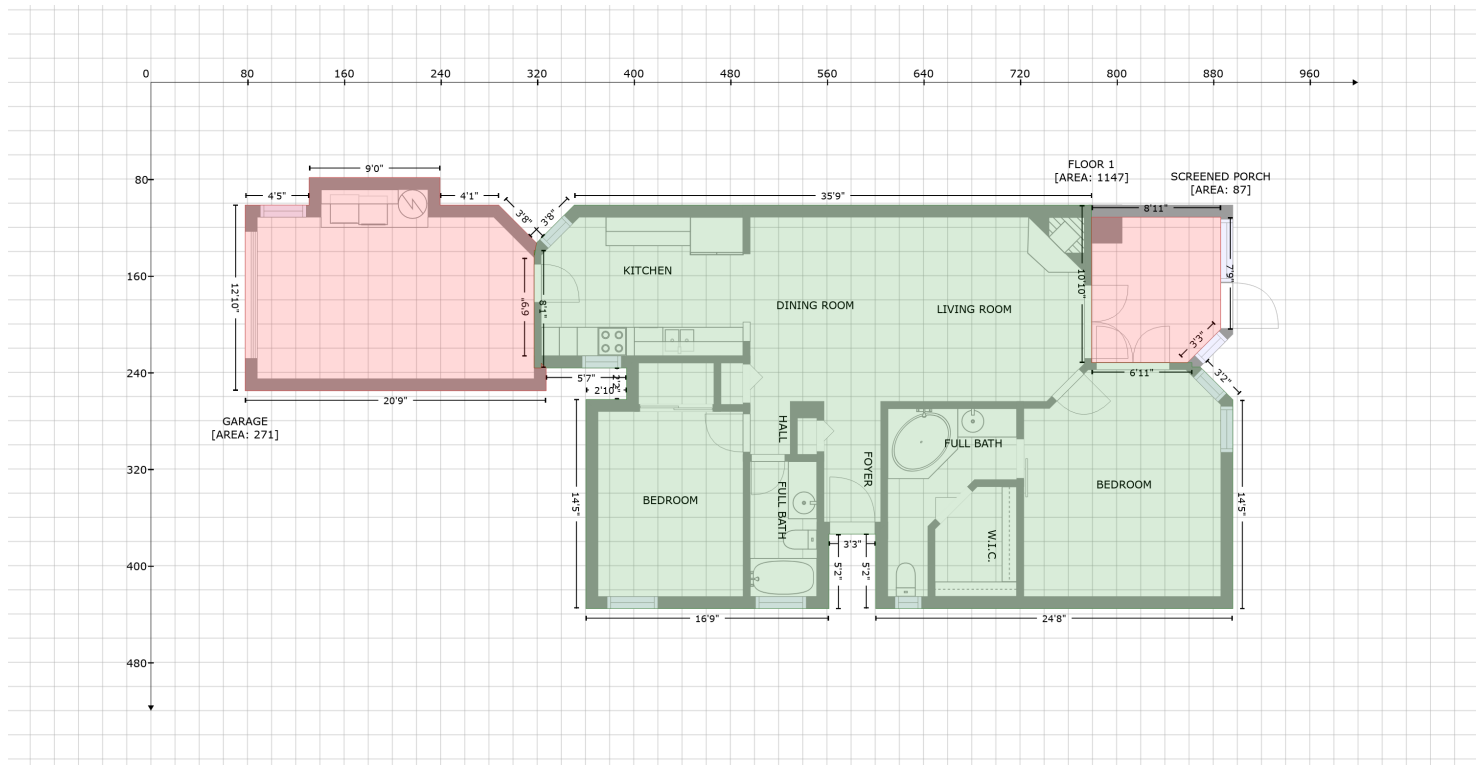


2675 Walnut Dr, Dunedin, FL, United States

Gross Living Area: 1147 sq. ft



Space	Area (sq. ft)	Calculation <small>Coordinate Polygon Area Algorithm using inches</small>
FLOOR 1 (Living area)	1147	$-\left((779.3 + 779.3) * (101.6 - 231.9) + (779.3 + 862.4) * (231.9 - 231.9) + (862.4 + 862.4) * (231.9 - 235.6) + (862.4 + 869.2) * (235.6 - 235.6) + (869.2 + 896.3) * (235.6 - 262.6) + (896.3 + 896.3) * (262.6 - 435.6) + (896.3 + 600.5) * (435.6 - 435.6) + (600.5 + 600.5) * (435.6 - 373.9) + (600.5 + 561.7) * (373.9 - 373.9) + (561.7 + 561.7) * (373.9 - 435.6) + (561.7 + 360.4) * (435.6 - 435.6) + (360.4 + 360.4) * (435.6 - 262.4) + (360.4 + 394) * (262.4 - 262.4) + (394 + 394) * (262.4 - 236.4) + (394 + 327.5) * (236.4 - 236.4) + (327.5 + 323.4) * (236.4 - 232.3) + (323.4 + 323.4) * (232.3 - 236.4) + (323.4 + 317.5) * (236.4 - 236.4) + (317.5 + 317.5) * (236.4 - 139) + (317.5 + 318.2) * (139 - 139) + (318.2 + 317.8) * (139 - 143.1) + (317.8 + 319.4) * (143.1 - 132.9) + (319.4 + 350.7) * (132.9 - 101.6) + (350.7 + 779.3) * (101.6 - 101.6)\right) * 0.5 * 0.00694$
SCREENED PORCH (Non-living area)	87	$-\left((886.3 + 886.3) * (111.6 - 204.4) + (886.3 + 858.6) * (204.4 - 231.9) + (858.6 + 779.3) * (231.9 - 231.9) + (779.3 + 779.3) * (231.9 - 111.6) + (779.3 + 886.3) * (111.6 - 111.6)\right) * 0.5 * 0.00694$
GARAGE (Non-living area)	271	$-\left((239.5 + 239.5) * (78.8 - 101.6) + (239.5 + 288.1) * (101.6 - 101.6) + (288.1 + 319.4) * (101.6 - 132.9) + (319.4 + 318.2) * (132.9 - 139) + (318.2 + 317.5) * (139 - 139) + (317.5 + 317.4) * (139 - 145) + (317.4 + 317.4) * (145 - 226.5) + (317.4 + 317.5) * (226.5 - 226.5) + (317.5 + 317.5) * (226.5 - 236.4) + (317.5 + 323.4) * (236.4 - 236.4) + (323.4 + 323.4) * (236.4 - 232.4) + (323.4 + 327.5) * (232.4 - 236.4) + (327.5 + 327.5) * (236.4 - 255.3) + (327.5 + 78.1) * (255.3 - 255.3) + (78.1 + 78.1) * (255.3 - 101.6) + (78.1 + 131) * (101.6 - 101.6) + (131 + 131) * (101.6 - 78.8) + (131 + 239.5) * (78.8 - 78.8)\right) * 0.5 * 0.00694$