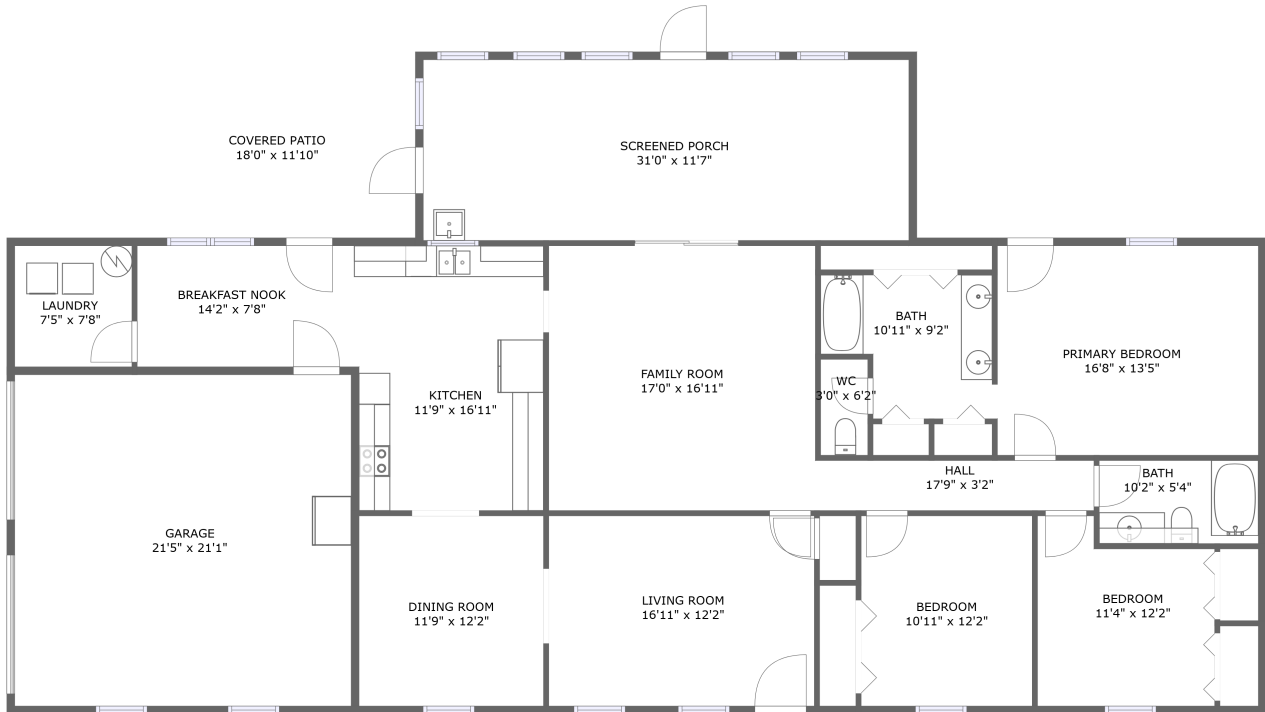


51 Collins Place Pvt Drive, Pumpkin Center, Danville, Morgan County, Alabama, United




FLOOR 1

Property Summary

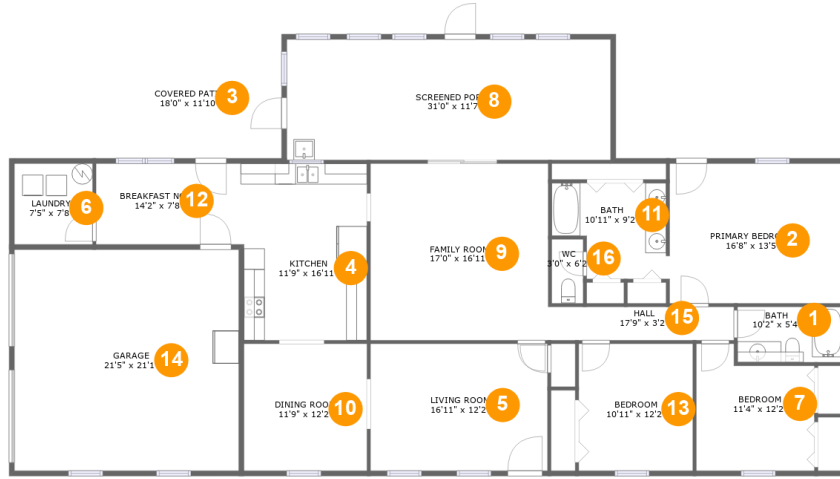
 **1** garages  **3** bedrooms  **2** bathrooms  **0** half baths

 **1** floors

 **1,962** Gross Living Area sqft

 **3,038** total sqft

51 Collins Place Pvt Drive, Pumpkin Center, Danville, Morgan County, Alabama, United



Room Dimensions

Floor 1

Total sqft: 3038

Living area: 1962

#	Room name	Dimensions	Area (sqft)	Counted as Living Area
1	Bath	10'2" x 5'4"	54 sq. ft	Yes
2	Primary Bedroom	16'8" x 13'5"	223 sq. ft	Yes
3	Covered Patio	18'0" x 11'10"	215 sq. ft	No
4	Kitchen	11'9" x 16'11"	199 sq. ft	Yes
5	Living Room	16'11" x 12'2"	206 sq. ft	Yes
6	Laundry	7'5" x 7'8"	58 sq. ft	Yes
7	Bedroom	11'4" x 12'2"	121 sq. ft	Yes
8	Screened Porch	31'0" x 11'7"	358 sq. ft	No
9	Family Room	17'0" x 16'11"	288 sq. ft	Yes
10	Dining Room	11'9" x 12'2"	143 sq. ft	Yes
11	Bath	10'11" x 9'2"	87 sq. ft	Yes

Scan captured on Tue, 22 Oct 2024 18:10:34 GMT

Information is calculated by CubiCasa technology; deemed highly reliable but not guaranteed.

**51 Collins Place Pvt Drive, Pumpkin Center,
Danville, Morgan County, Alabama, United**

#	Room name	Dimensions	Area (sqft)	Counted as Living Area
12	Breakfast Nook	14'2" x 7'8"	110 sq. ft	Yes
13	Bedroom	10'11" x 12'2"	133 sq. ft	Yes
14	Garage	21'5" x 21'1"	455 sq. ft	No
15	Hall	17'9" x 3'2"	57 sq. ft	Yes
16	Wc	3'0" x 6'2"	18 sq. ft	Yes

51 Collins Place Pvt Drive, Pumpkin Center, Danville, Morgan County, Alabama, United

1 Floor 1 - Bath



Dimensions: 10'2" x 5'4"
Area: 54 sq. ft
Counted as Living Area:
Yes

Heated: Yes
Finished: Yes
Enclosed: Yes
Contiguous:
Yes
Permitted: Yes
Wet Space: Yes
Addition: No
Conversion: No

2 Floor 1 - Primary Bedroom



Dimensions: 16'8" x 13'5"
Area: 223 sq. ft
Counted as Living Area:
Yes

Heated: Yes
Finished: Yes
Enclosed: Yes
Contiguous:
Yes
Permitted: Yes
Wet Space: No
Addition: No
Conversion: No

51 Collins Place Pvt Drive, Pumpkin Center, Danville, Morgan County, Alabama, United

3 Floor 1 - Covered Patio



Dimensions: 18'0" x 11'10"
Area: 215 sq. ft
Counted as Living Area: No

Heated: No
Finished: Yes
Enclosed: No
Contiguous: Yes
Permitted: Yes
Wet Space: No
Addition: No
Conversion: No

4 Floor 1 - Kitchen



Dimensions: 11'9" x 16'11"
Area: 199 sq. ft
Counted as Living Area:
Yes

Heated: Yes
Finished: Yes
Enclosed: Yes
Contiguous:
Yes
Permitted: Yes
Wet Space: No
Addition: No
Conversion: No

5 Floor 1 - Living Room



Dimensions: 16'11" x 12'2"
Area: 206 sq. ft
Counted as Living Area:
Yes

Heated: Yes
Finished: Yes
Enclosed: Yes
Contiguous:
Yes
Permitted: Yes
Wet Space: No
Addition: No
Conversion: No

51 Collins Place Pvt Drive, Pumpkin Center, Danville, Morgan County, Alabama, United

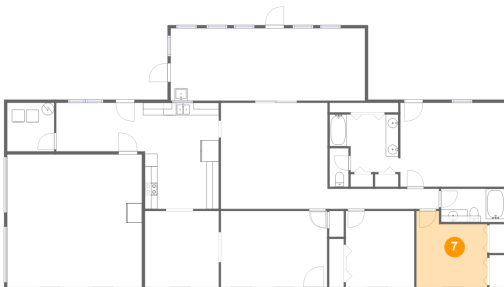
6 Floor 1 - Laundry



Dimensions: 7'5" x 7'8"
Area: 58 sq. ft
Counted as Living Area:
Yes

Heated: Yes
Finished: Yes
Enclosed: Yes
Contiguous:
Yes
Permitted: Yes
Wet Space: No
Addition: No
Conversion: No

7 Floor 1 - Bedroom



Dimensions: 11'4" x 12'2"
Area: 121 sq. ft
Counted as Living Area:
Yes

Heated: Yes
Finished: Yes
Enclosed: Yes
Contiguous:
Yes
Permitted: Yes
Wet Space: No
Addition: No
Conversion: No

8 Floor 1 - Screened Porch



Dimensions: 31'0" x 11'7"
Area: 358 sq. ft
Counted as Living Area: No

Heated: No
Finished: Yes
Enclosed: No
Contiguous: Yes
Permitted: Yes
Wet Space: No
Addition: No
Conversion: No

51 Collins Place Pvt Drive, Pumpkin Center, Danville, Morgan County, Alabama, United

9 Floor 1 - Family Room



Dimensions: 17'0" x 16'11"
Area: 288 sq. ft
Counted as Living Area:
Yes

Heated: Yes
Finished: Yes
Enclosed: Yes
Contiguous:
Yes
Permitted: Yes
Wet Space: No
Addition: No
Conversion: No

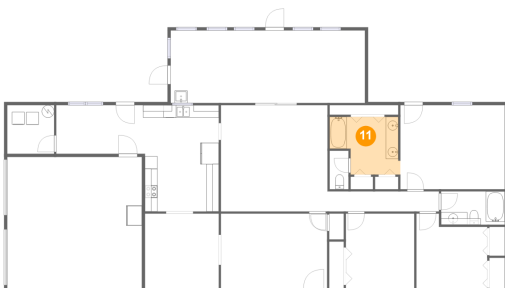
10 Floor 1 - Dining Room



Dimensions: 11'9" x 12'2"
Area: 143 sq. ft
Counted as Living Area:
Yes

Heated: Yes
Finished: Yes
Enclosed: Yes
Contiguous:
Yes
Permitted: Yes
Wet Space: No
Addition: No
Conversion: No

11 Floor 1 - Bath

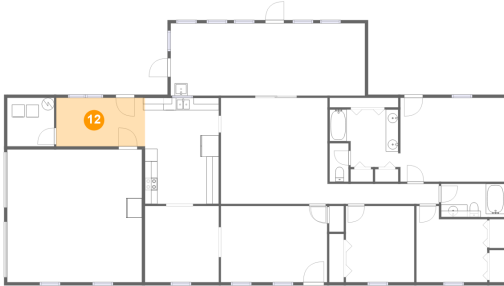


Dimensions: 10'11" x 9'2"
Area: 87 sq. ft
Counted as Living Area:
Yes

Heated: Yes
Finished: Yes
Enclosed: Yes
Contiguous:
Yes
Permitted: Yes
Wet Space: Yes
Addition: No
Conversion: No

51 Collins Place Pvt Drive, Pumpkin Center, Danville, Morgan County, Alabama, United

12 Floor 1 - Breakfast Nook



Dimensions: 14'2" x 7'8"
Area: 110 sq. ft
Counted as Living Area:
Yes

Heated: Yes
Finished: Yes
Enclosed: Yes
Contiguous:
Yes
Permitted: Yes
Wet Space: No
Addition: No
Conversion: No

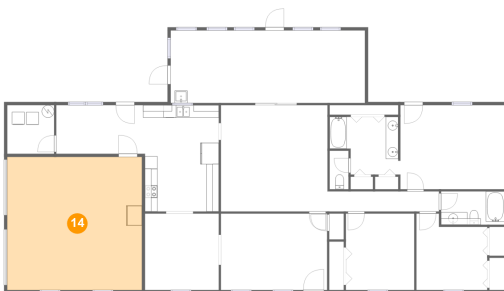
13 Floor 1 - Bedroom



Dimensions: 10'11" x 12'2"
Area: 133 sq. ft
Counted as Living Area:
Yes

Heated: Yes
Finished: Yes
Enclosed: Yes
Contiguous:
Yes
Permitted: Yes
Wet Space: No
Addition: No
Conversion: No

14 Floor 1 - Garage

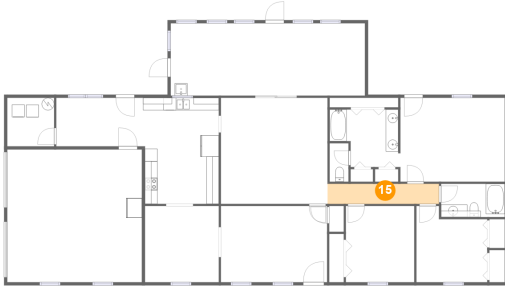


Dimensions: 21'5" x 21'1"
Area: 455 sq. ft
Counted as Living Area: No

Heated: No
Finished: No
Enclosed: Yes
Contiguous: Yes
Permitted: Yes
Wet Space: No
Addition: No
Conversion: No

51 Collins Place Pvt Drive, Pumpkin Center, Danville, Morgan County, Alabama, United

15 Floor 1 - Hall



Dimensions: 17'9" x 3'2"
Area: 57 sq. ft
Counted as Living Area:
Yes

Heated: Yes
Finished: Yes
Enclosed: Yes
Contiguous:
Yes
Permitted: Yes
Wet Space: No
Addition: No
Conversion: No

16 Floor 1 - Wc



Dimensions: 3'0" x 6'2"
Area: 18 sq. ft
Counted as Living Area:
Yes

Heated: Yes
Finished: Yes
Enclosed: Yes
Contiguous:
Yes
Permitted: Yes
Wet Space: Yes
Addition: No
Conversion: No