

## Home report

244 Fergus Crescent, Stonebridge, Nepean, Ontario, Canada,  
K2J 3L7




**Total Area: 2081 sq. ft**

Floor 1: 488 sq. ft, Floor 2: 697 sq. ft, Floor 3: 896 sq. ft

Excluded: Storage 67 sq. ft, Laundry 108 sq. ft, Fireplace 6 sq. ft, Open to below 16 sq. ft,  
Walls: 168 sq. ft

## Property summary

 **3** Floors

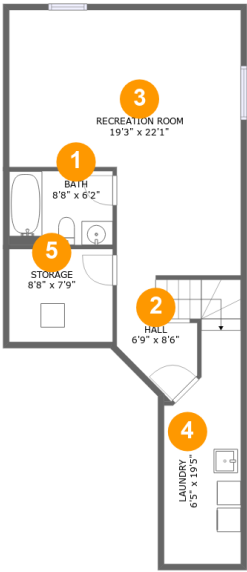
 **4** Bedrooms

 **3** Bathrooms

 **1** Half baths

Home report

244 Fergus Crescent, Stonebridge, Nepean, Ontario, Canada,  
K2J 3L7



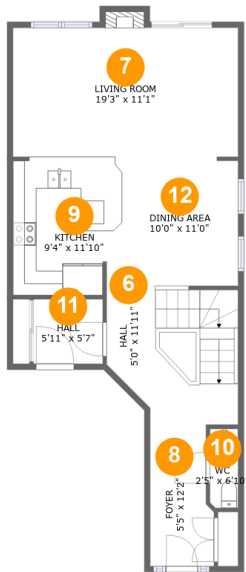
Room dimensions

Floor 1 Total:488sqft   Excluded: 175sqft

#		Max Dimensions	sqft	Included
1	Bath	8'8" x 6'2"	53 sq. ft	Yes
2	Hall	6'9" x 8'6"	72 sq. ft	Yes
3	Recreation Room	19'3" x 22'1"	346 sq. ft	Yes
4	Laundry	6'5" x 19'5"	108 sq. ft	No
5	Storage	8'8" x 7'9"	67 sq. ft	No

Home report

244 Fergus Crescent, Stonebridge, Nepean, Ontario, Canada,  
K2J 3L7



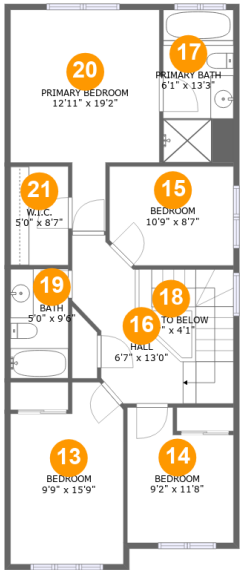
Room dimensions

Floor 2 Total:697sqft Excluded: 6sqft

#		Max Dimensions	sqft	Included
6	Hall	5'0" x 11'11"	121 sq. ft	Yes
7	Living Room	19'3" x 11'1"	219 sq. ft	Yes
8	Foyer	5'5" x 12'2"	62 sq. ft	Yes
9	Kitchen	9'4" x 11'10"	108 sq. ft	Yes
10	WC	2'5" x 6'10"	16 sq. ft	Yes
11	Hall	5'11" x 5'7"	33 sq. ft	Yes
12	Dining Area	10'0" x 11'0"	109 sq. ft	Yes

Home report

244 Fergus Crescent, Stonebridge, Nepean, Ontario, Canada,  
K2J 3L7



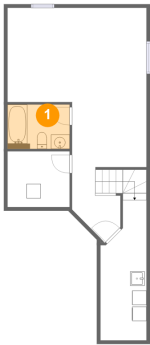
Room dimensions

Floor 3 Total:896sqft Excluded: 16sqft

#		Max Dimensions	sqft	Included
13	Bedroom	9'9" x 15'9"	137 sq. ft	Yes
14	Bedroom	9'2" x 11'8"	96 sq. ft	Yes
15	Bedroom	10'9" x 8'7"	90 sq. ft	Yes
16	Hall	6'7" x 13'0"	137 sq. ft	Yes
17	Primary Bath	6'1" x 13'3"	81 sq. ft	Yes
18	Open To Below	4'7" x 4'1"	16 sq. ft	No
19	Bath	5'0" x 9'6"	47 sq. ft	Yes
20	Primary Bedroom	12'11" x 19'2"	188 sq. ft	Yes
21	W.I.C.	5'0" x 8'7"	43 sq. ft	Yes

244 Fergus Crescent, Stonebridge, Nepean, Ontario, Canada,  
K2J 3L7

1 Floor 1 - Bath



Max Dimensions: 8'8" x 6'2"  
Calculated Area: 53 sq. ft  
Included: Yes

Heated: Yes  
Finished: Yes  
Enclosed: Yes  
Contiguous: Yes  
Permitted: Yes  
Wet space: Yes  
Addition: No  
Conversion: No

2 Floor 1 - Hall



Max Dimensions: 6'9" x 8'6"  
Calculated Area: 72 sq. ft  
Included: Yes

Heated: Yes  
Finished: Yes  
Enclosed: Yes  
Contiguous: Yes  
Permitted: Yes  
Wet space: No  
Addition: No  
Conversion: No

244 Fergus Crescent, Stonebridge, Nepean, Ontario, Canada,  
K2J 3L7

3 Floor 1 - Recreation Room



Max Dimensions: 19'3" x 22'1"  
Calculated Area: 346 sq. ft  
Included: Yes

Heated: Yes  
Finished: Yes  
Enclosed: Yes  
Contiguous: Yes  
Permitted: Yes  
Wet space: No  
Addition: No  
Conversion: No

4 Floor 1 - Laundry



Max Dimensions: 6'5" x 19'5"  
Calculated Area: 108 sq. ft  
Included: No

Heated: Yes  
Finished: No  
Enclosed: Yes  
Contiguous: Yes  
Permitted: Yes  
Wet space: No  
Addition: No  
Conversion: No

5 Floor 1 - Storage



Max Dimensions: 8'8" x 7'9"  
Calculated Area: 67 sq. ft  
Included: No

Heated: No  
Finished: No  
Enclosed: No  
Contiguous: Yes  
Permitted: Yes  
Wet space: No  
Addition: No  
Conversion: No

244 Fergus Crescent, Stonebridge, Nepean, Ontario, Canada,  
K2J 3L7

6 Floor 2 - Hall



Max Dimensions: 5'0" x 11'11"  
Calculated Area: 121 sq. ft  
Included: Yes

Heated: Yes  
Finished: Yes  
Enclosed: Yes  
Contiguous: Yes  
Permitted: Yes  
Wet space: No  
Addition: No  
Conversion: No

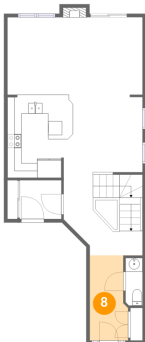
7 Floor 2 - Living Room



Max Dimensions: 19'3" x 11'1"  
Calculated Area: 219 sq. ft  
Included: Yes

Heated: Yes  
Finished: Yes  
Enclosed: Yes  
Contiguous: Yes  
Permitted: Yes  
Wet space: No  
Addition: No  
Conversion: No

8 Floor 2 - Foyer



Max Dimensions: 5'5" x 12'2"  
Calculated Area: 62 sq. ft  
Included: Yes

Heated: Yes  
Finished: Yes  
Enclosed: Yes  
Contiguous: Yes  
Permitted: Yes  
Wet space: No  
Addition: No  
Conversion: No

244 Fergus Crescent, Stonebridge, Nepean, Ontario, Canada,  
K2J 3L7

9 Floor 2 - Kitchen



Max Dimensions: 9'4" x 11'10"  
Calculated Area: 108 sq. ft  
Included: Yes

Heated: Yes  
Finished: Yes  
Enclosed: Yes  
Contiguous: Yes  
Permitted: Yes  
Wet space: No  
Addition: No  
Conversion: No

10 Floor 2 - WC



Max Dimensions: 2'5" x 6'10"  
Calculated Area: 16 sq. ft  
Included: Yes

Heated: Yes  
Finished: Yes  
Enclosed: Yes  
Contiguous: Yes  
Permitted: Yes  
Wet space: No  
Addition: No  
Conversion: No

11 Floor 2 - Hall



Max Dimensions: 5'11" x 5'7"  
Calculated Area: 33 sq. ft  
Included: Yes

Heated: Yes  
Finished: Yes  
Enclosed: Yes  
Contiguous: Yes  
Permitted: Yes  
Wet space: No  
Addition: No  
Conversion: No



244 Fergus Crescent, Stonebridge, Nepean, Ontario, Canada,  
K2J 3L7

12 Floor 2 - Dining Area



Max Dimensions: 10'0" x 11'0"  
Calculated Area: 109 sq. ft  
Included: Yes

Heated: Yes  
Finished: Yes  
Enclosed: Yes  
Contiguous: Yes  
Permitted: Yes  
Wet space: No  
Addition: No  
Conversion: No

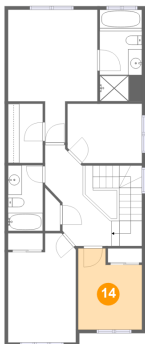
13 Floor 3 - Bedroom



Max Dimensions: 9'9" x 15'9"  
Calculated Area: 137 sq. ft  
Included: Yes

Heated: Yes  
Finished: Yes  
Enclosed: Yes  
Contiguous: Yes  
Permitted: Yes  
Wet space: No  
Addition: No  
Conversion: No

14 Floor 3 - Bedroom



Max Dimensions: 9'2" x 11'8"  
Calculated Area: 96 sq. ft  
Included: Yes

Heated: Yes  
Finished: Yes  
Enclosed: Yes  
Contiguous: Yes  
Permitted: Yes  
Wet space: No  
Addition: No  
Conversion: No

244 Fergus Crescent, Stonebridge, Nepean, Ontario, Canada,  
K2J 3L7

15 Floor 3 - Bedroom



Max Dimensions: 10'9" x 8'7"  
Calculated Area: 90 sq. ft  
Included: Yes

Heated: Yes  
Finished: Yes  
Enclosed: Yes  
Contiguous: Yes  
Permitted: Yes  
Wet space: No  
Addition: No  
Conversion: No

16 Floor 3 - Hall



Max Dimensions: 6'7" x 13'0"  
Calculated Area: 137 sq. ft  
Included: Yes

Heated: Yes  
Finished: Yes  
Enclosed: Yes  
Contiguous: Yes  
Permitted: Yes  
Wet space: No  
Addition: No  
Conversion: No

17 Floor 3 - Primary Bath



Max Dimensions: 6'1" x 13'3"  
Calculated Area: 81 sq. ft  
Included: Yes

Heated: Yes  
Finished: Yes  
Enclosed: Yes  
Contiguous: Yes  
Permitted: Yes  
Wet space: Yes  
Addition: No  
Conversion: No

244 Fergus Crescent, Stonebridge, Nepean, Ontario, Canada,  
K2J 3L7

18 Floor 3 - Open To Below



Max Dimensions: 4'7" x 4'1"  
Calculated Area: 16 sq. ft  
Included: No

Heated: No  
Finished: No  
Enclosed: No  
Contiguous: Yes  
Permitted: No  
Wet space: No  
Addition: No  
Conversion: No

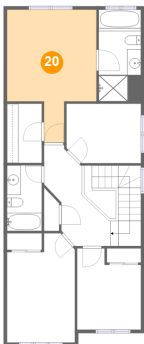
19 Floor 3 - Bath



Max Dimensions: 5'0" x 9'6"  
Calculated Area: 47 sq. ft  
Included: Yes

Heated: Yes  
Finished: Yes  
Enclosed: Yes  
Contiguous: Yes  
Permitted: Yes  
Wet space: Yes  
Addition: No  
Conversion: No

20 Floor 3 - Primary Bedroom



Max Dimensions: 12'11" x 19'2"  
Calculated Area: 188 sq. ft  
Included: Yes

Heated: Yes  
Finished: Yes  
Enclosed: Yes  
Contiguous: Yes  
Permitted: Yes  
Wet space: No  
Addition: No  
Conversion: No

244 Fergus Crescent, Stonebridge, Nepean, Ontario, Canada,  
K2J 3L7

**21** Floor 3 - W.I.C.

---



Max Dimensions: 5'0" x 8'7"  
Calculated Area: 43 sq. ft  
Included: Yes

Heated: Yes  
Finished: Yes  
Enclosed: Yes  
Contiguous: Yes  
Permitted: Yes  
Wet space: No  
Addition: No  
Conversion: No