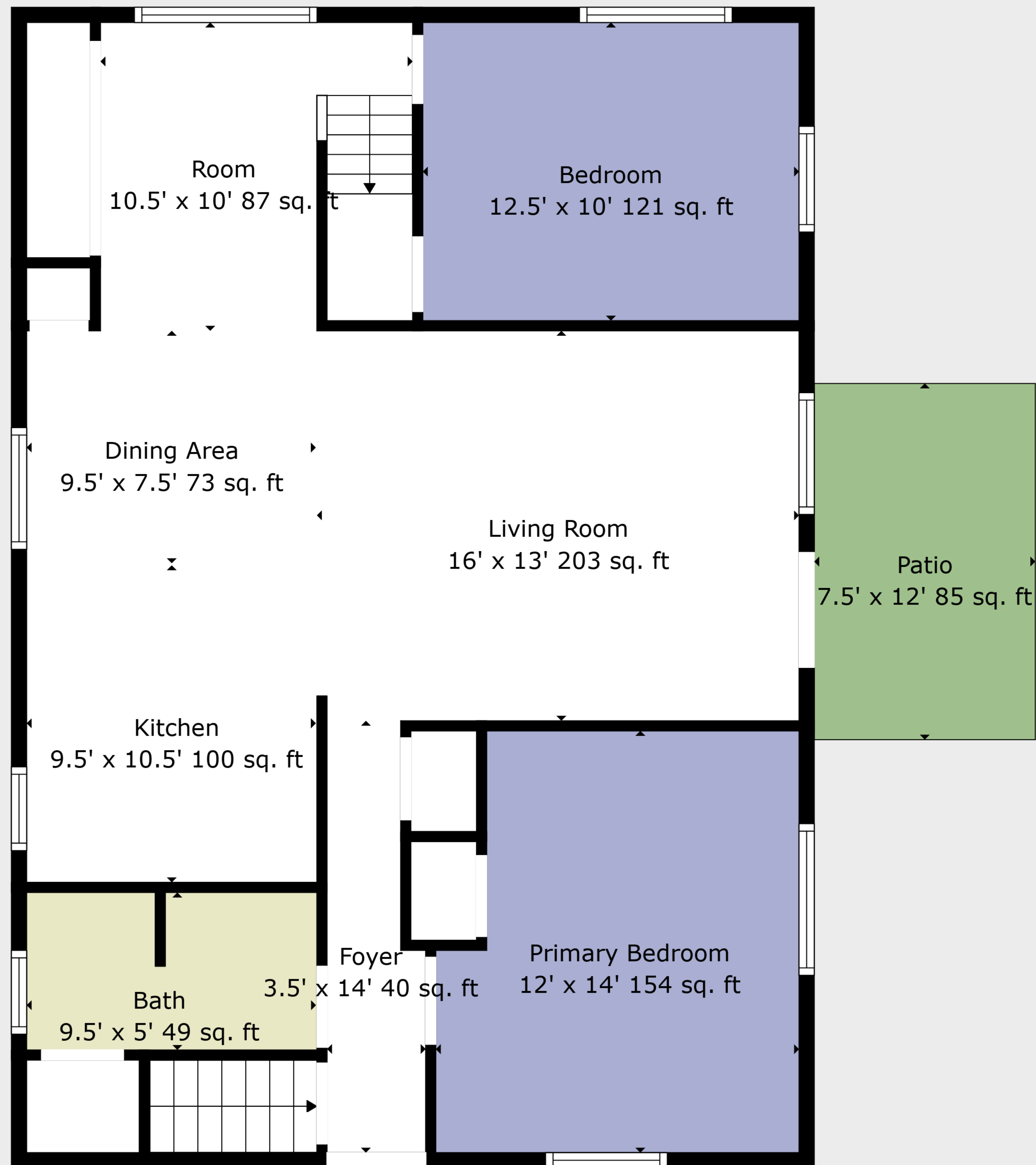


TOTAL: 1269 sq. ft

BELOW GROUND: 0 sq. ft, FLOOR 2: 944 sq. ft, FLOOR 3: 325 sq. ft
EXCLUDED AREAS: GARAGE: 887 sq. ft, PATIO: 85 sq. ft, LOW CEILING: 152 sq. ft
WALLS: 189 sq. ft





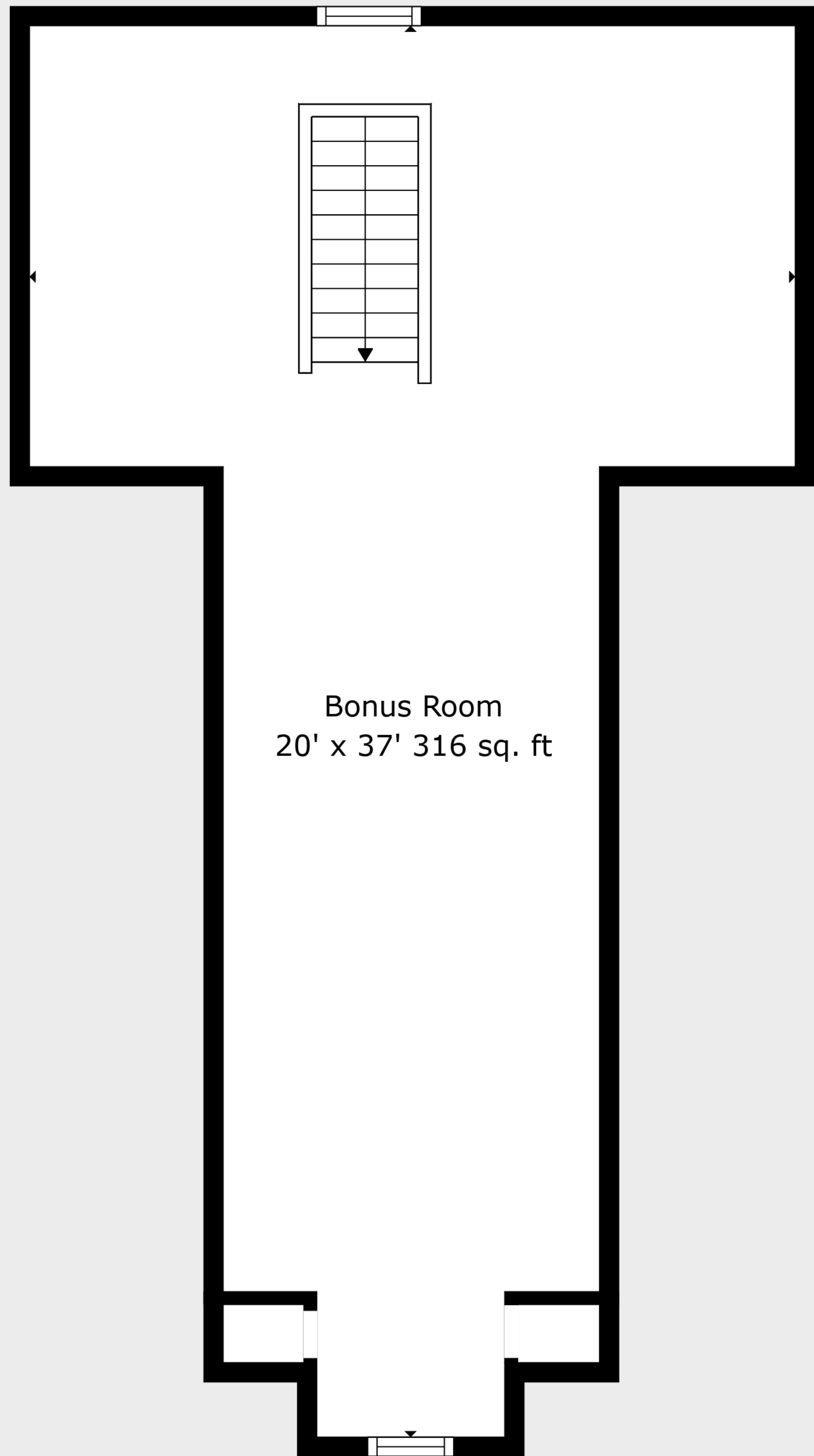
TOTAL: 1269 sq. ft

BELOW GROUND: 0 sq. ft, FLOOR 2: 944 sq. ft, FLOOR 3: 325 sq. ft

EXCLUDED AREAS: GARAGE: 887 sq. ft, PATIO: 85 sq. ft, LOW CEILING: 152 sq. ft

WALLS: 189 sq. ft



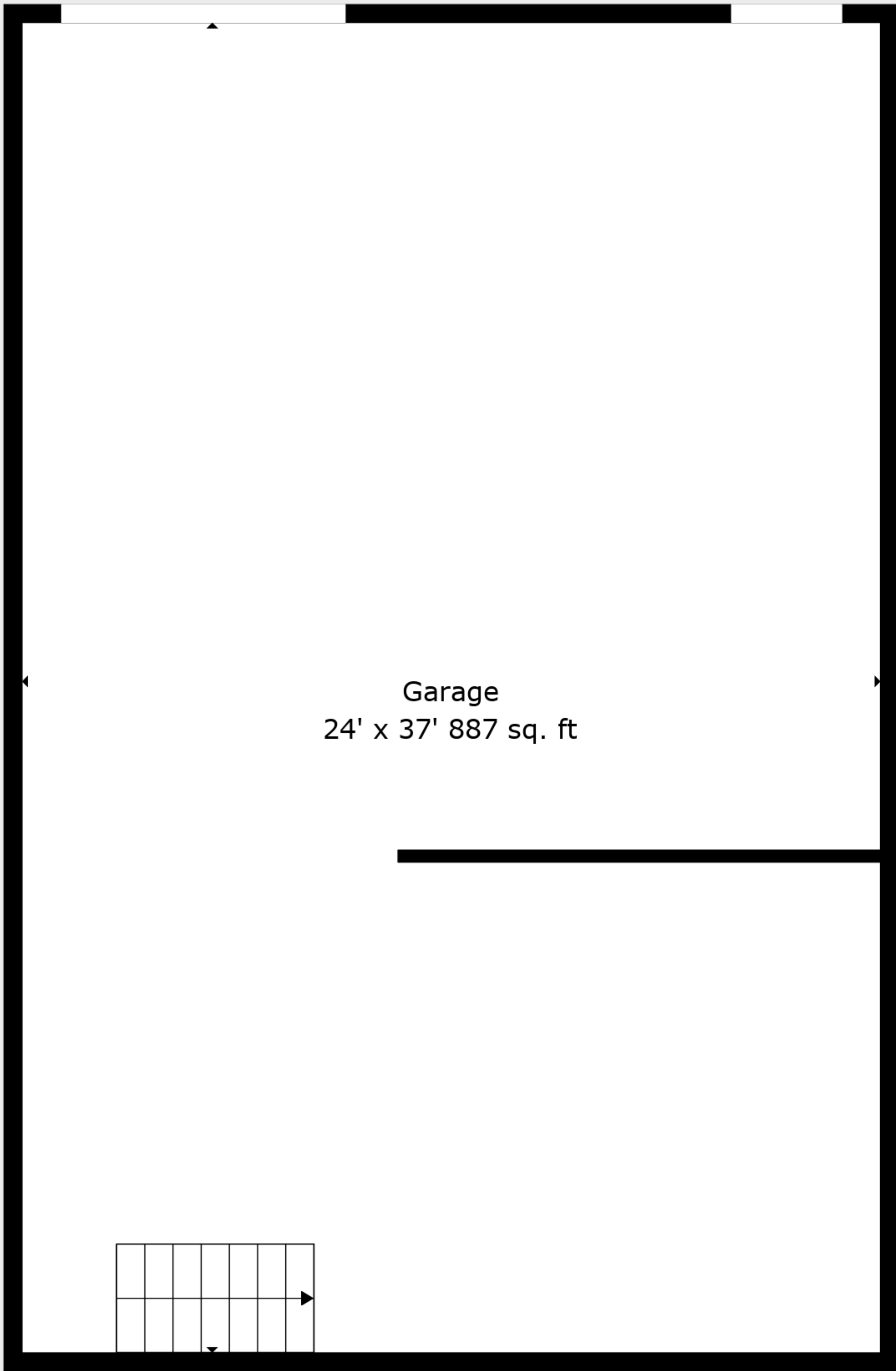


Bonus Room
20' x 37' 316 sq. ft

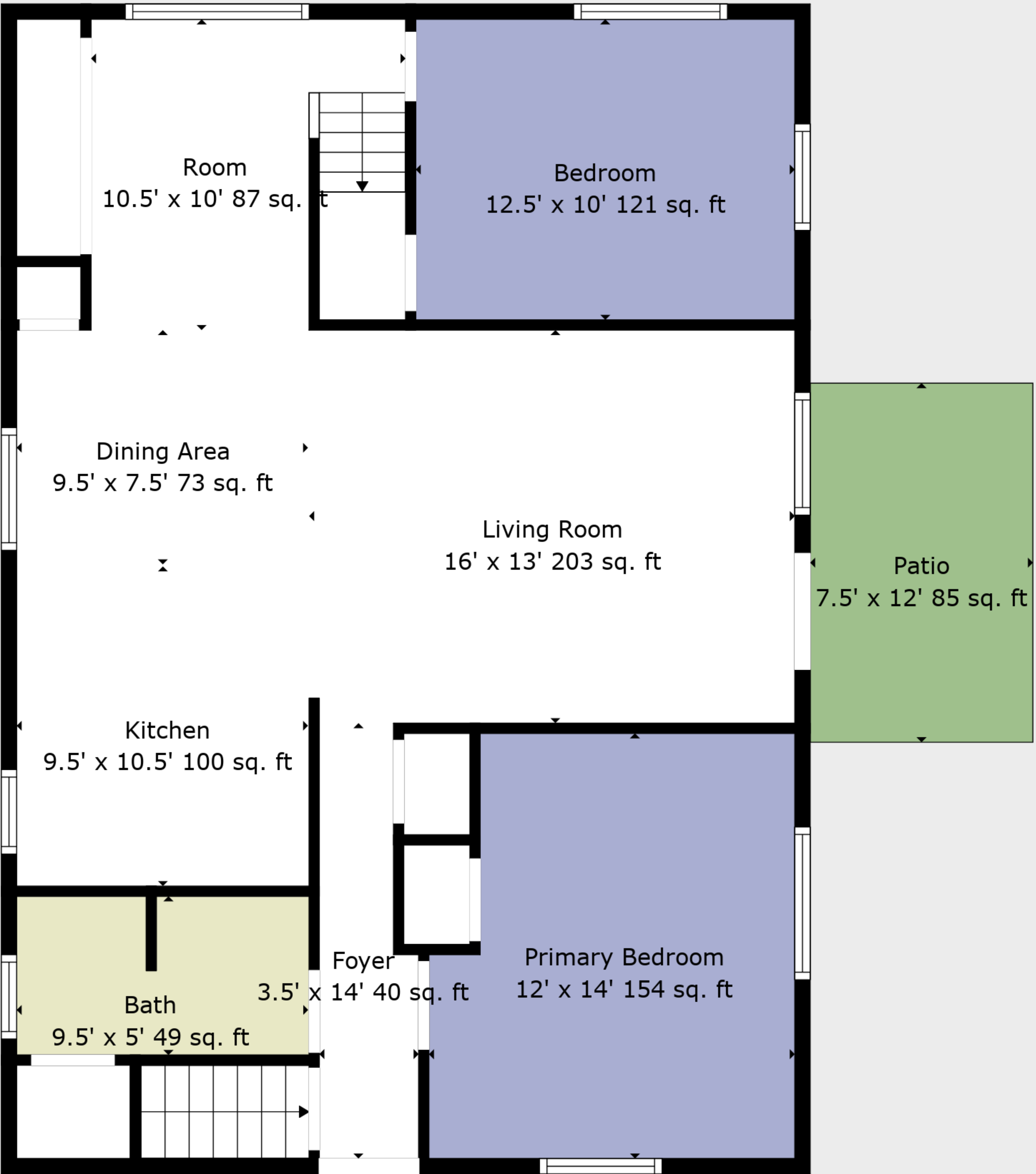
TOTAL: 1269 sq. ft

BELOW GROUND: 0 sq. ft, FLOOR 2: 944 sq. ft, FLOOR 3: 325 sq. ft
EXCLUDED AREAS: GARAGE: 887 sq. ft, PATIO: 85 sq. ft, LOW CEILING: 152 sq. ft
WALLS: 189 sq. ft

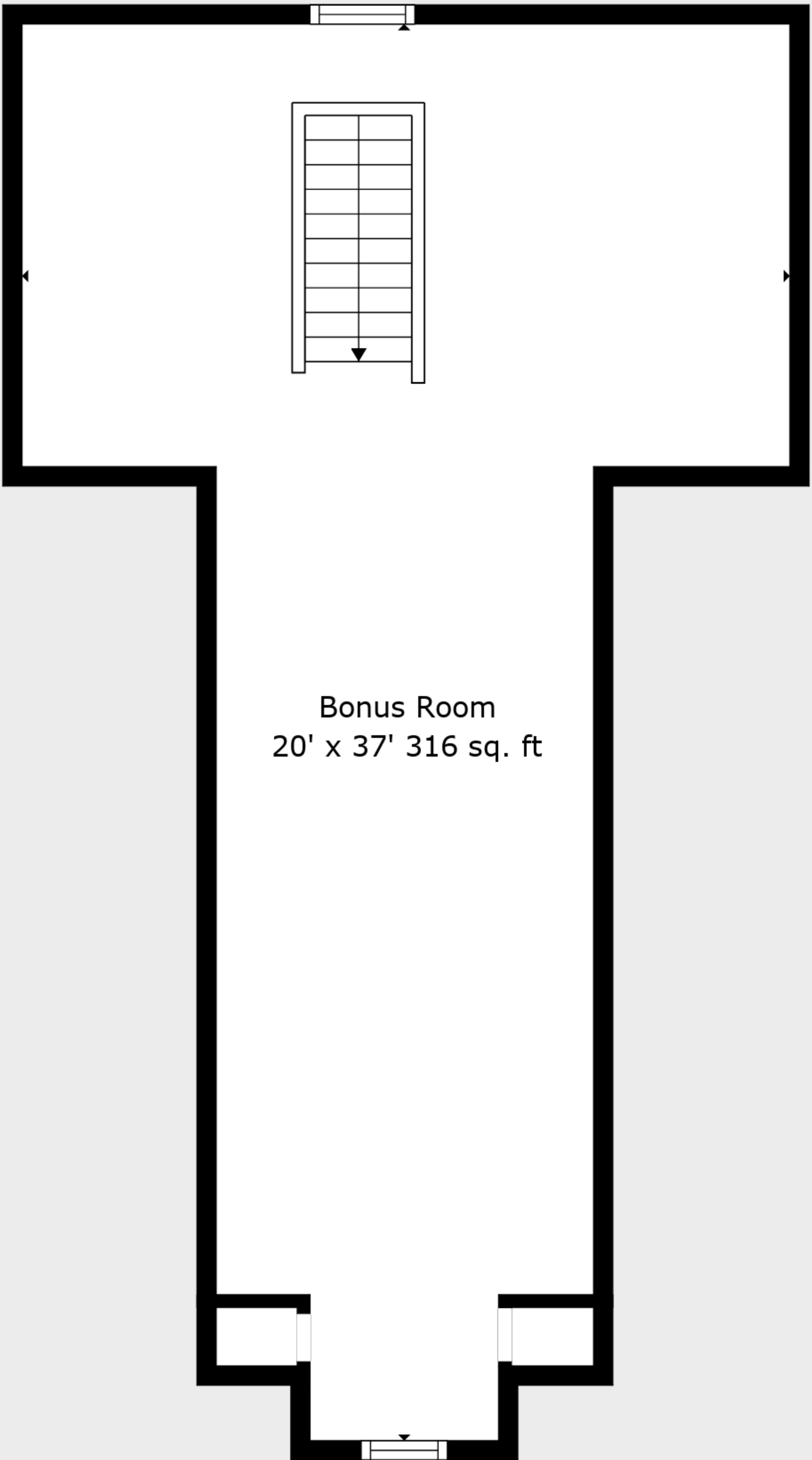




Floor 1



Floor 2



Floor 3

