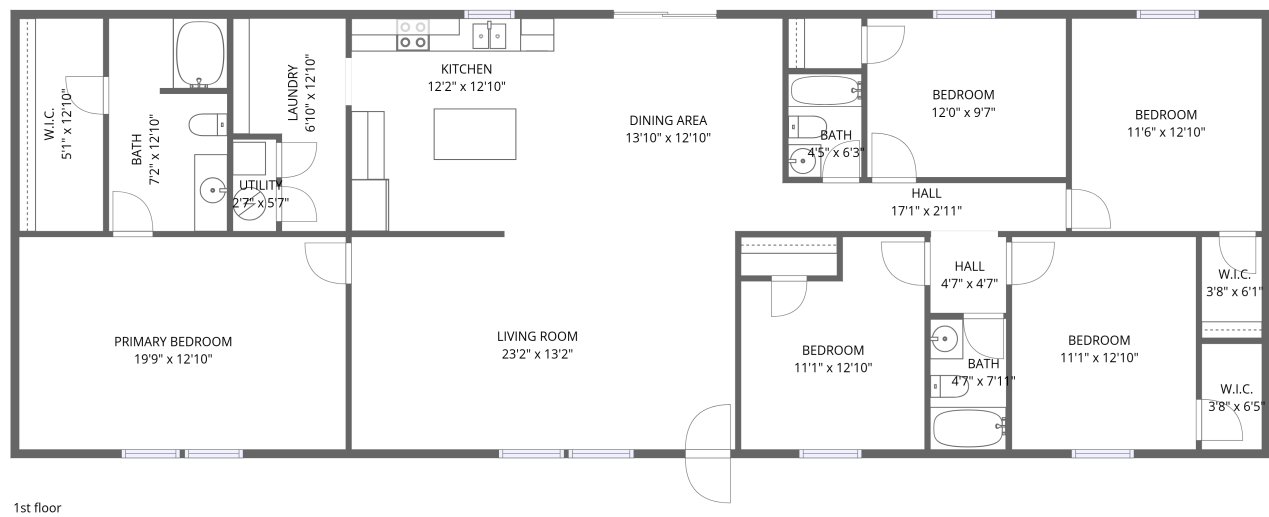


Home data report

10545 Beckenger Ave,Hastings,FL,US



Total Area: 1935 sq. ft

1st Floor: 1935 sq. ft

Excluded: Utility 15 sq. ft, Walls: 102 sq. ft

Property summary

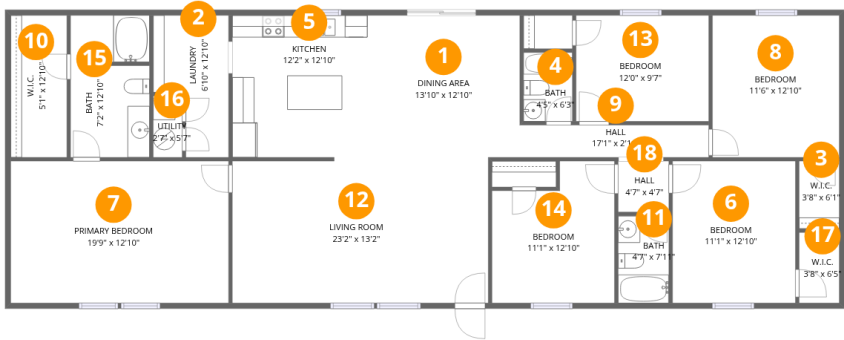
 **1** Floors

 **5** Bedrooms

 **3** Bathrooms

Home data report

10545 Beckenger Ave,Hastings,FL,US



Room dimensions

Floor 1 Total:1935sqft Excluded: 15sqft

#		Dimensions	sqft	Counted as living area
1	Dining Area	13'10" x 12'10"	177 sq. ft	Yes
2	Laundry	6'10" x 12'10"	70 sq. ft	Yes
3	W.I.C.	3'8" x 6'1"	22 sq. ft	Yes
4	Bath	4'5" x 6'3"	28 sq. ft	Yes
5	Kitchen	12'2" x 12'10"	157 sq. ft	Yes
6	Bedroom	11'1" x 12'10"	143 sq. ft	Yes
7	Primary Bedroom	19'9" x 12'10"	253 sq. ft	Yes
8	Bedroom	11'6" x 12'10"	147 sq. ft	Yes
9	Hall	17'1" x 2'11"	50 sq. ft	Yes
10	W.I.C.	5'1" x 12'10"	65 sq. ft	Yes
11	Bath	4'7" x 7'11"	36 sq. ft	Yes

Home data report

10545 Beckenger Ave,Hastings,FL,US

#		Dimensions	sqft	Counted as living area
12	Living Room	23'2" x 13'2"	302 sq. ft	Yes
13	Bedroom	12'0" x 9'7"	115 sq. ft	Yes
14	Bedroom	11'1" x 12'10"	126 sq. ft	Yes
15	Bath	7'2" x 12'10"	90 sq. ft	Yes
16	Utility	2'7" x 5'7"	15 sq. ft	No
17	W.I.C.	3'8" x 6'5"	23 sq. ft	Yes
18	Hall	4'7" x 4'7"	21 sq. ft	Yes

1 Floor 1 - Dining Area



Dimensions: 13'10" x 12'10"
Area: 177 sq. ft
Counted as living area: Yes

Heated: Yes
Finished: Yes
Enclosed: Yes
Contiguous: Yes
Permitted: Yes
Wet space: No
Addition: No
Conversion: No

2 Floor 1 - Laundry



Dimensions: 6'10" x 12'10"
Area: 70 sq. ft
Counted as living area: Yes

Heated: Yes
Finished: Yes
Enclosed: Yes
Contiguous: Yes
Permitted: Yes
Wet space: No
Addition: No
Conversion: No

3 Floor 1 - W.I.C.



Dimensions: 3'8" x 6'1"
Area: 22 sq. ft
Counted as living area: Yes

Heated: Yes
Finished: Yes
Enclosed: Yes
Contiguous: Yes
Permitted: Yes
Wet space: No
Addition: No
Conversion: No

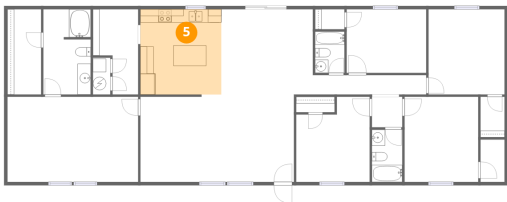
4 Floor 1 - Bath



Dimensions: 4'5" x 6'3"
Area: 28 sq. ft
Counted as living area: Yes

Heated: Yes
Finished: Yes
Enclosed: Yes
Contiguous: Yes
Permitted: Yes
Wet space: Yes
Addition: No
Conversion: No

5 Floor 1 - Kitchen



Dimensions: 12'2" x 12'10"
Area: 157 sq. ft
Counted as living area: Yes

Heated: Yes
Finished: Yes
Enclosed: Yes
Contiguous: Yes
Permitted: Yes
Wet space: No
Addition: No
Conversion: No

6 Floor 1 - Bedroom



Dimensions: 11'1" x 12'10"
Area: 143 sq. ft
Counted as living area: Yes

Heated: Yes
Finished: Yes
Enclosed: Yes
Contiguous: Yes
Permitted: Yes
Wet space: No
Addition: No
Conversion: No

7 Floor 1 - Primary Bedroom



Dimensions: 19'9" x 12'10"
Area: 253 sq. ft
Counted as living area: Yes

Heated: Yes
Finished: Yes
Enclosed: Yes
Contiguous: Yes
Permitted: Yes
Wet space: No
Addition: No
Conversion: No

8 Floor 1 - Bedroom



Dimensions: 11'6" x 12'10"
Area: 147 sq. ft
Counted as living area: Yes

Heated: Yes
Finished: Yes
Enclosed: Yes
Contiguous: Yes
Permitted: Yes
Wet space: No
Addition: No
Conversion: No

9 Floor 1 - Hall



Dimensions: 17'1" x 2'11"
Area: 50 sq. ft
Counted as living area: Yes

Heated: Yes
Finished: Yes
Enclosed: Yes
Contiguous: Yes
Permitted: Yes
Wet space: No
Addition: No
Conversion: No

10 Floor 1 - W.I.C.



Dimensions: 5'1" x 12'10"
Area: 65 sq. ft
Counted as living area: Yes

Heated: Yes
Finished: Yes
Enclosed: Yes
Contiguous: Yes
Permitted: Yes
Wet space: No
Addition: No
Conversion: No

11 Floor 1 - Bath



Dimensions: 4'7" x 7'11"
Area: 36 sq. ft
Counted as living area: Yes

Heated: Yes
Finished: Yes
Enclosed: Yes
Contiguous: Yes
Permitted: Yes
Wet space: Yes
Addition: No
Conversion: No

12 Floor 1 - Living Room



Dimensions: 23'2" x 13'2"
Area: 302 sq. ft
Counted as living area: Yes

Heated: Yes
Finished: Yes
Enclosed: Yes
Contiguous: Yes
Permitted: Yes
Wet space: No
Addition: No
Conversion: No

13 Floor 1 - Bedroom



Dimensions: 12'0" x 9'7"
Area: 115 sq. ft
Counted as living area: Yes

Heated: Yes
Finished: Yes
Enclosed: Yes
Contiguous: Yes
Permitted: Yes
Wet space: No
Addition: No
Conversion: No

14 Floor 1 - Bedroom



Dimensions: 11'1" x 12'10"
Area: 126 sq. ft
Counted as living area: Yes

Heated: Yes
Finished: Yes
Enclosed: Yes
Contiguous: Yes
Permitted: Yes
Wet space: No
Addition: No
Conversion: No

15 Floor 1 - Bath



Dimensions: 7'2" x 12'10"
Area: 90 sq. ft
Counted as living area: Yes

Heated: Yes
Finished: Yes
Enclosed: Yes
Contiguous: Yes
Permitted: Yes
Wet space: Yes
Addition: No
Conversion: No

16 Floor 1 - Utility



Dimensions: 2'7" x 5'7"
Area: 15 sq. ft
Counted as living area: No

Heated: Yes
Finished: No
Enclosed: Yes
Contiguous: Yes
Permitted: Yes
Wet space: No
Addition: No
Conversion: No

17 Floor 1 - W.I.C.



Dimensions: 3'8" x 6'5"
Area: 23 sq. ft
Counted as living area: Yes

Heated: Yes
Finished: Yes
Enclosed: Yes
Contiguous: Yes
Permitted: Yes
Wet space: No
Addition: No
Conversion: No

18 Floor 1 - Hall



Dimensions: 4'7" x 4'7"
Area: 21 sq. ft
Counted as living area: Yes

Heated: Yes
Finished: Yes
Enclosed: Yes
Contiguous: Yes
Permitted: Yes
Wet space: No
Addition: No
Conversion: No