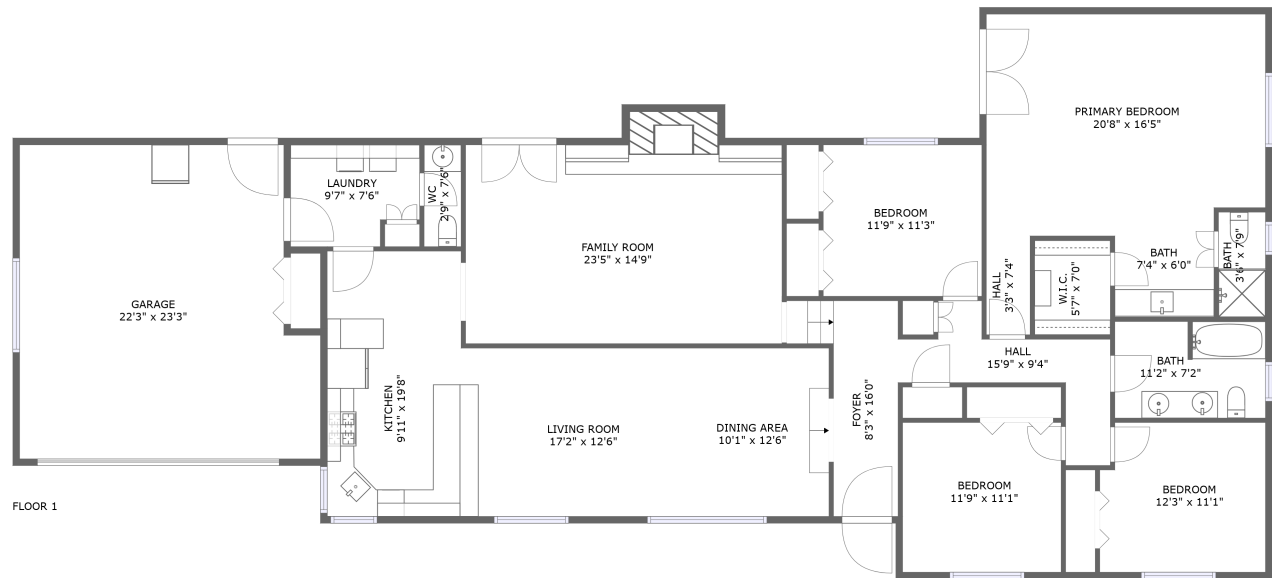


Home report

2930 Cambridge Court, Bartlesville, Washington County,  
Oklahoma, United States, 74006




Total Area: 2260 sq. ft

Floor 1: 2260 sq. ft

Excluded: Garage 480 sq. ft, Fireplace 19 sq. ft, Walls: 147 sq. ft

Property summary

 1 Floors

 4 Bedrooms

 2 Bathrooms

Home report

**2930 Cambridge Court, Bartlesville, Washington County,  
Oklahoma, United States, 74006**



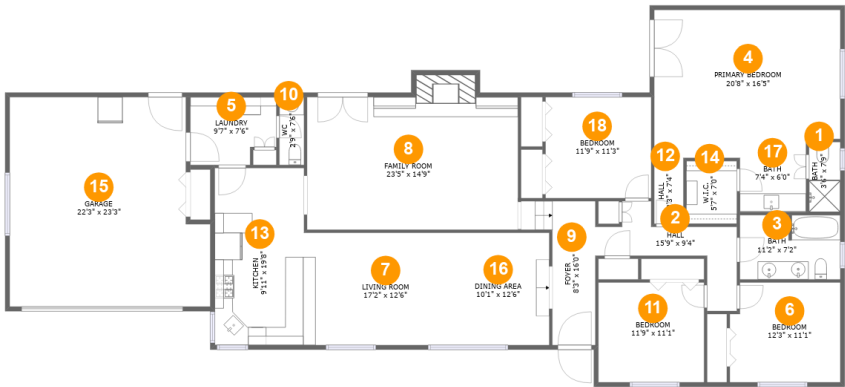
**1**  
Half baths



**1**  
Garages

Home report

2930 Cambridge Court, Bartlesville, Washington County,  
Oklahoma, United States, 74006



Room dimensions

Floor 1 Total:2260sqft Excluded: 499sqft

#		Max Dimensions	sqft	Included
1	Bath	3'6" x 7'9"	27 sq. ft	Yes
2	Hall	15'9" x 9'4"	80 sq. ft	Yes
3	Bath	11'2" x 7'2"	79 sq. ft	Yes
4	Primary Bedroom	20'8" x 16'5"	332 sq. ft	Yes
5	Laundry	9'7" x 7'6"	66 sq. ft	Yes
6	Bedroom	12'3" x 11'1"	132 sq. ft	Yes
7	Living Room	17'2" x 12'6"	214 sq. ft	Yes
8	Family Room	23'5" x 14'9"	362 sq. ft	Yes
9	Foyer	8'3" x 16'0"	87 sq. ft	Yes
10	WC	2'9" x 7'6"	21 sq. ft	Yes
11	Bedroom	11'9" x 11'1"	130 sq. ft	Yes

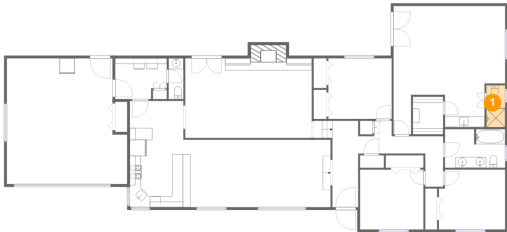
## Home report

**2930 Cambridge Court, Bartlesville, Washington County,  
Oklahoma, United States, 74006**

#		Max Dimensions	sqft	Included
12	Hall	3'3" x 7'4"	24 sq. ft	Yes
13	Kitchen	9'11" x 19'8"	195 sq. ft	Yes
14	W.I.C.	5'7" x 7'0"	39 sq. ft	Yes
15	Garage	22'3" x 23'3"	480 sq. ft	No
16	Dining Area	10'1" x 12'6"	126 sq. ft	Yes
17	Bath	7'4" x 6'0"	44 sq. ft	Yes
18	Bedroom	11'9" x 11'3"	132 sq. ft	Yes

2930 Cambridge Court, Bartlesville, Washington County,  
Oklahoma, United States, 74006

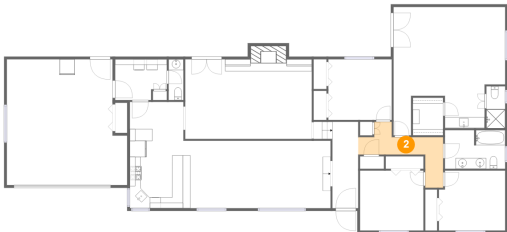
1 Floor 1 - Bath



Max Dimensions: 3'6" x 7'9"  
Calculated Area: 27 sq. ft  
Included: Yes

Heated: Yes  
Finished: Yes  
Enclosed: Yes  
Contiguous: Yes  
Permitted: Yes  
Wet space: Yes  
Addition: No  
Conversion: No

2 Floor 1 - Hall

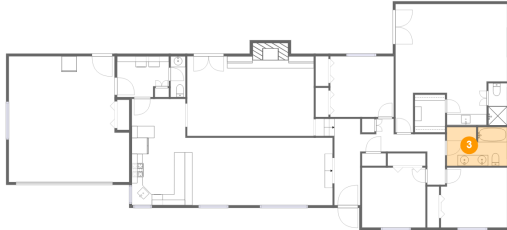


Max Dimensions: 15'9" x 9'4"  
Calculated Area: 80 sq. ft  
Included: Yes

Heated: Yes  
Finished: Yes  
Enclosed: Yes  
Contiguous: Yes  
Permitted: Yes  
Wet space: No  
Addition: No  
Conversion: No

2930 Cambridge Court, Bartlesville, Washington County,  
Oklahoma, United States, 74006

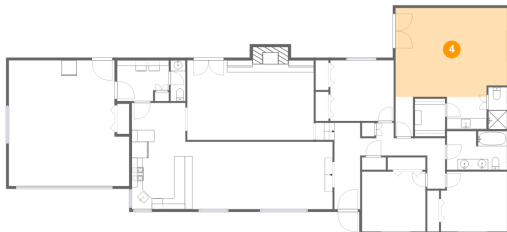
### 3 Floor 1 - Bath



Max Dimensions: 11'2" x 7'2"  
Calculated Area: 79 sq. ft  
Included: Yes

Heated: Yes  
Finished: Yes  
Enclosed: Yes  
Contiguous: Yes  
Permitted: Yes  
Wet space: Yes  
Addition: No  
Conversion: No

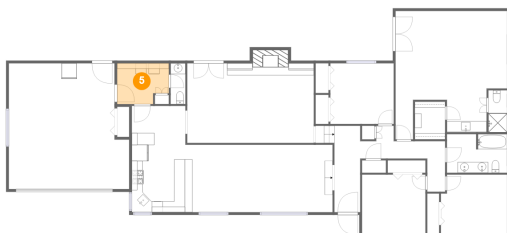
### 4 Floor 1 - Primary Bedroom



Max Dimensions: 20'8" x 16'5"  
Calculated Area: 332 sq. ft  
Included: Yes

Heated: Yes  
Finished: Yes  
Enclosed: Yes  
Contiguous: Yes  
Permitted: Yes  
Wet space: No  
Addition: No  
Conversion: No

### 5 Floor 1 - Laundry

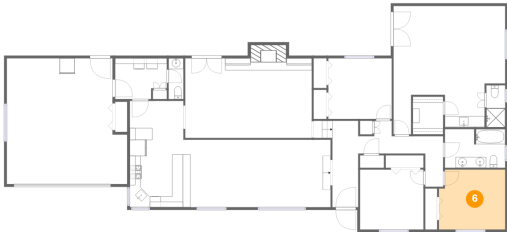


Max Dimensions: 9'7" x 7'6"  
Calculated Area: 66 sq. ft  
Included: Yes

Heated: Yes  
Finished: Yes  
Enclosed: Yes  
Contiguous: Yes  
Permitted: Yes  
Wet space: No  
Addition: No  
Conversion: No

2930 Cambridge Court, Bartlesville, Washington County,  
Oklahoma, United States, 74006

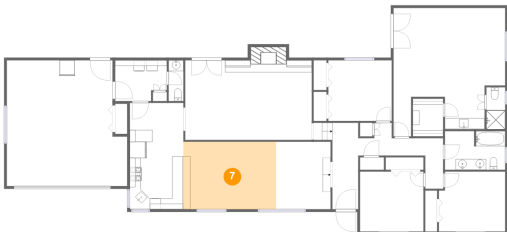
6 Floor 1 - Bedroom



Max Dimensions: 12'3" x 11'1"  
Calculated Area: 132 sq. ft  
Included: Yes

Heated: Yes  
Finished: Yes  
Enclosed: Yes  
Contiguous: Yes  
Permitted: Yes  
Wet space: No  
Addition: No  
Conversion: No

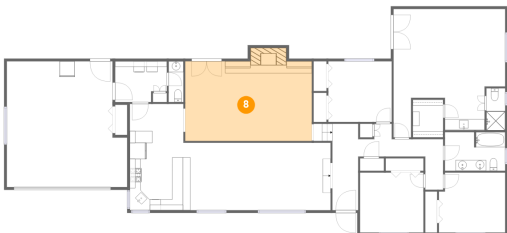
7 Floor 1 - Living Room



Max Dimensions: 17'2" x 12'6"  
Calculated Area: 214 sq. ft  
Included: Yes

Heated: Yes  
Finished: Yes  
Enclosed: Yes  
Contiguous: Yes  
Permitted: Yes  
Wet space: No  
Addition: No  
Conversion: No

8 Floor 1 - Family Room

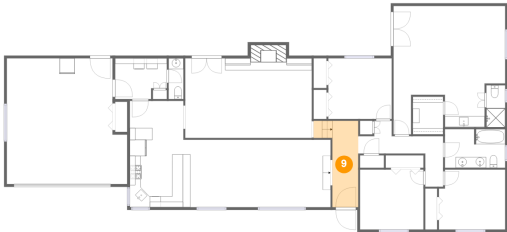


Max Dimensions: 23'5" x 14'9"  
Calculated Area: 362 sq. ft  
Included: Yes

Heated: Yes  
Finished: Yes  
Enclosed: Yes  
Contiguous: Yes  
Permitted: Yes  
Wet space: No  
Addition: No  
Conversion: No

2930 Cambridge Court, Bartlesville, Washington County,  
Oklahoma, United States, 74006

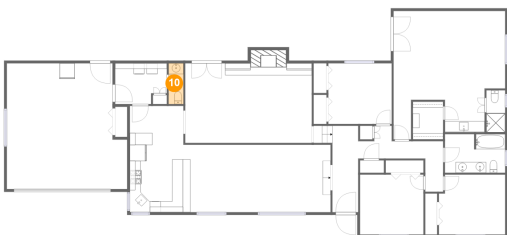
9 Floor 1 - Foyer



Max Dimensions: 8'3" x 16'0"  
Calculated Area: 87 sq. ft  
Included: Yes

Heated: Yes  
Finished: Yes  
Enclosed: Yes  
Contiguous: Yes  
Permitted: Yes  
Wet space: No  
Addition: No  
Conversion: No

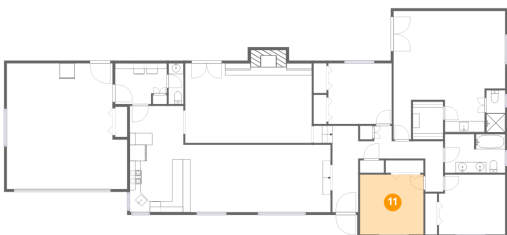
10 Floor 1 - WC



Max Dimensions: 2'9" x 7'6"  
Calculated Area: 21 sq. ft  
Included: Yes

Heated: Yes  
Finished: Yes  
Enclosed: Yes  
Contiguous: Yes  
Permitted: Yes  
Wet space: Yes  
Addition: No  
Conversion: No

11 Floor 1 - Bedroom



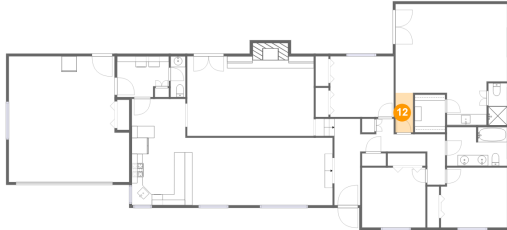
Max Dimensions: 11'9" x 11'1"  
Calculated Area: 130 sq. ft  
Included: Yes

Heated: Yes  
Finished: Yes  
Enclosed: Yes  
Contiguous: Yes  
Permitted: Yes  
Wet space: No  
Addition: No  
Conversion: No



2930 Cambridge Court, Bartlesville, Washington County,  
Oklahoma, United States, 74006

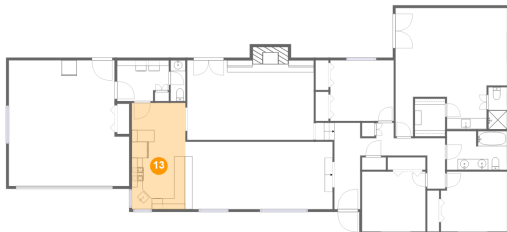
## 12 Floor 1 - Hall



Max Dimensions: 3'3" x 7'4"  
Calculated Area: 24 sq. ft  
Included: Yes

Heated: Yes  
Finished: Yes  
Enclosed: Yes  
Contiguous: Yes  
Permitted: Yes  
Wet space: No  
Addition: No  
Conversion: No

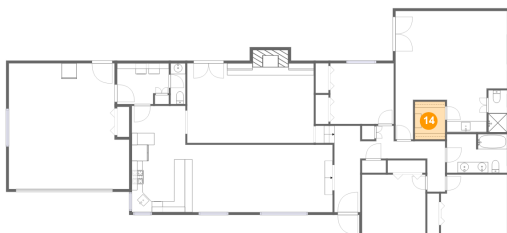
## 13 Floor 1 - Kitchen



Max Dimensions: 9'11" x 19'8"  
Calculated Area: 195 sq. ft  
Included: Yes

Heated: Yes  
Finished: Yes  
Enclosed: Yes  
Contiguous: Yes  
Permitted: Yes  
Wet space: No  
Addition: No  
Conversion: No

## 14 Floor 1 - W.I.C.

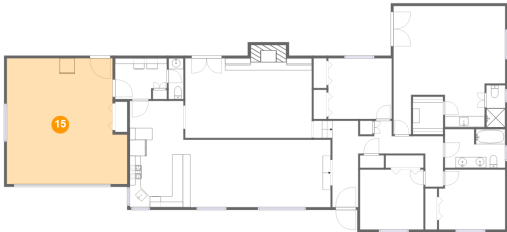


Max Dimensions: 5'7" x 7'0"  
Calculated Area: 39 sq. ft  
Included: Yes

Heated: Yes  
Finished: Yes  
Enclosed: Yes  
Contiguous: Yes  
Permitted: Yes  
Wet space: No  
Addition: No  
Conversion: No

2930 Cambridge Court, Bartlesville, Washington County,  
Oklahoma, United States, 74006

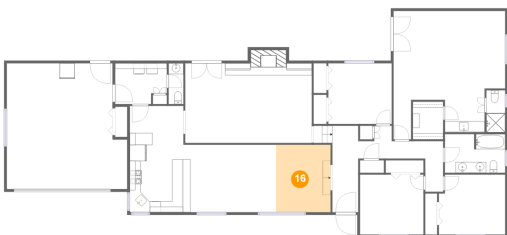
15 Floor 1 - Garage



Max Dimensions: 22'3" x 23'3"  
Calculated Area: 480 sq. ft  
Included: No

Heated: No  
Finished: No  
Enclosed: Yes  
Contiguous: Yes  
Permitted: Yes  
Wet space: No  
Addition: No  
Conversion: No

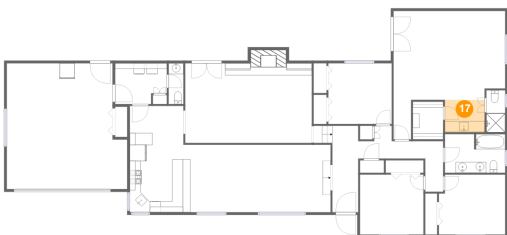
16 Floor 1 - Dining Area



Max Dimensions: 10'1" x 12'6"  
Calculated Area: 126 sq. ft  
Included: Yes

Heated: Yes  
Finished: Yes  
Enclosed: Yes  
Contiguous: Yes  
Permitted: Yes  
Wet space: No  
Addition: No  
Conversion: No

17 Floor 1 - Bath

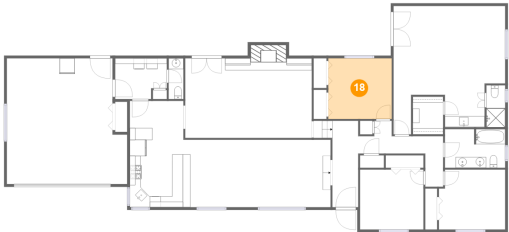


Max Dimensions: 7'4" x 6'0"  
Calculated Area: 44 sq. ft  
Included: Yes

Heated: Yes  
Finished: Yes  
Enclosed: Yes  
Contiguous: Yes  
Permitted: Yes  
Wet space: Yes  
Addition: No  
Conversion: No

2930 Cambridge Court, Bartlesville, Washington County,  
Oklahoma, United States, 74006

**18** Floor 1 - Bedroom



Max Dimensions: 11'9" x 11'3"  
Calculated Area: 132 sq. ft  
Included: Yes

Heated: Yes  
Finished: Yes  
Enclosed: Yes  
Contiguous: Yes  
Permitted: Yes  
Wet space: No  
Addition: No  
Conversion: No