

Bath
4'5" x 7'11"

Bath
5'4" x 5'4"

Primary Bedroom
12'7" x 17'4"

Foyer
9'7" x 17'4"

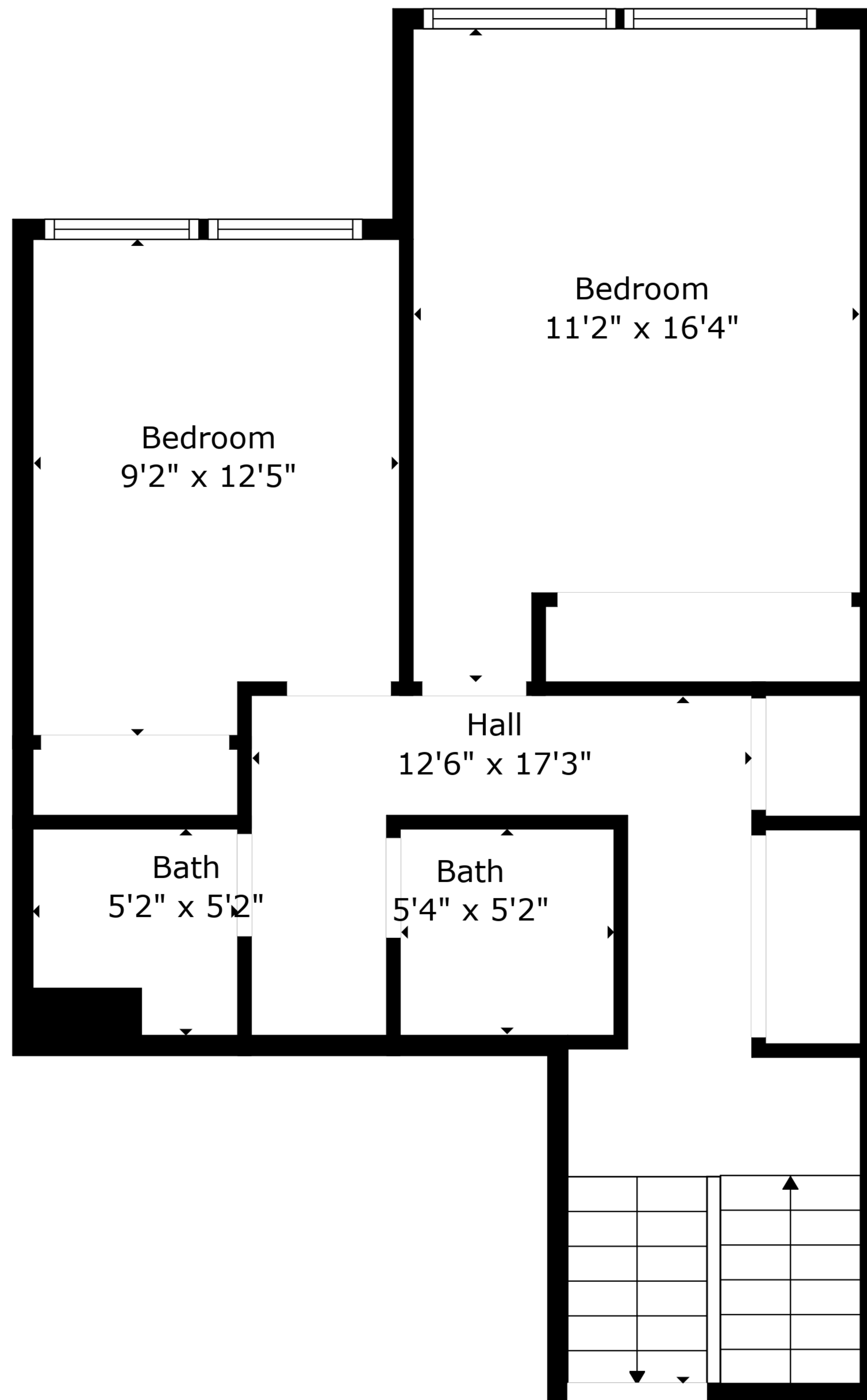
Porch
9'10" x 5'3"

TOTAL: 1479 sq. ft

FLOOR 1: 431 sq. ft, FLOOR 2: 538 sq. ft, FLOOR 3: 510 sq. ft

EXCLUDED AREAS: PORCH: 52 sq. ft, ELECTRICAL ROOM: 22 sq. ft, BALCONY: 54 sq. ft

Created By Nordy Photography. Calculations Deemed Highly Reliable But Not Guaranteed.

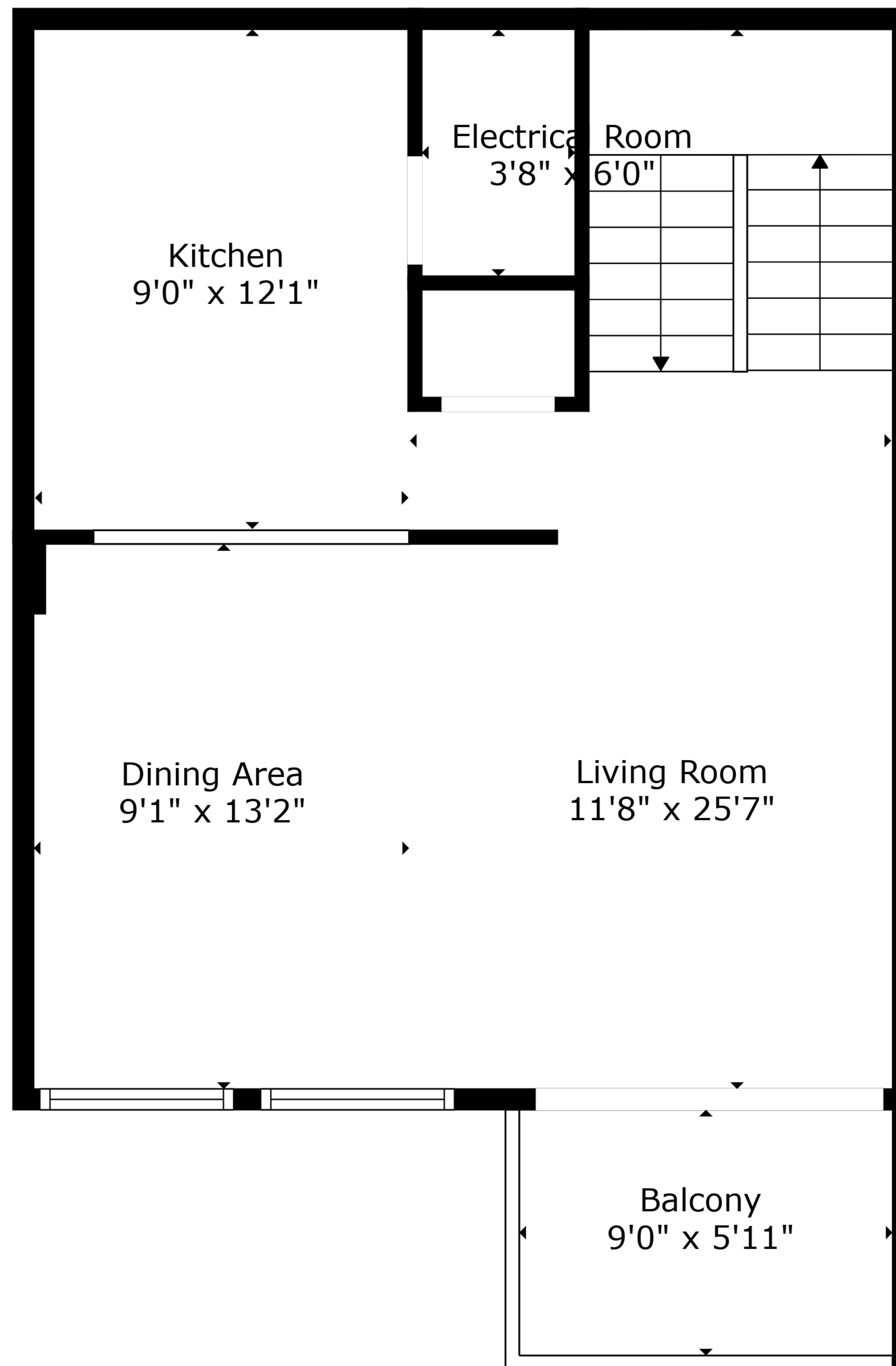


TOTAL: 1479 sq. ft

FLOOR 1: 431 sq. ft, FLOOR 2: 538 sq. ft, FLOOR 3: 510 sq. ft

EXCLUDED AREAS: PORCH: 52 sq. ft, ELECTRICAL ROOM: 22 sq. ft, BALCONY: 54 sq. ft

Created By Nordy Photography. Calculations Deemed Highly Reliable But Not Guaranteed.

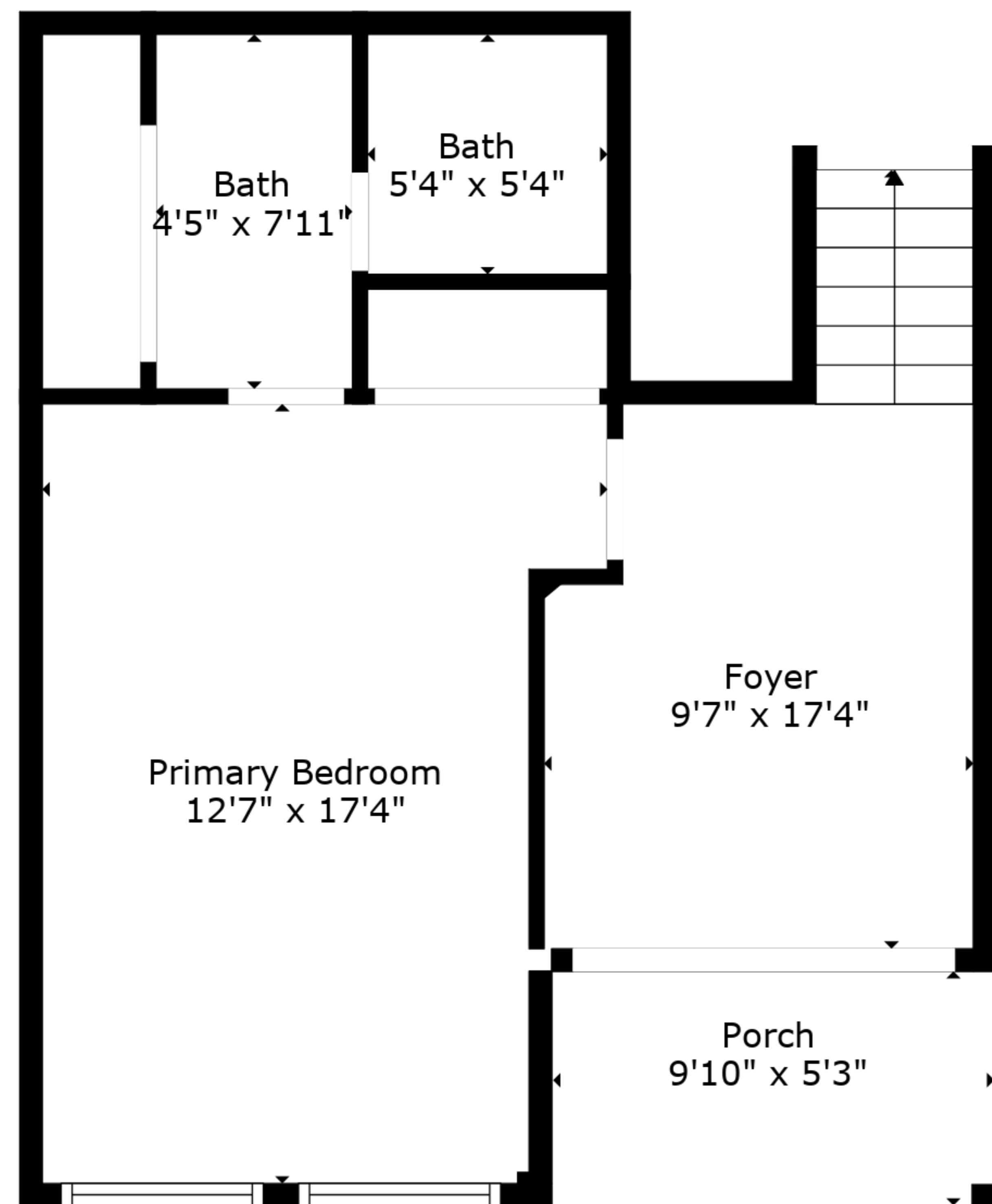


TOTAL: 1479 sq. ft

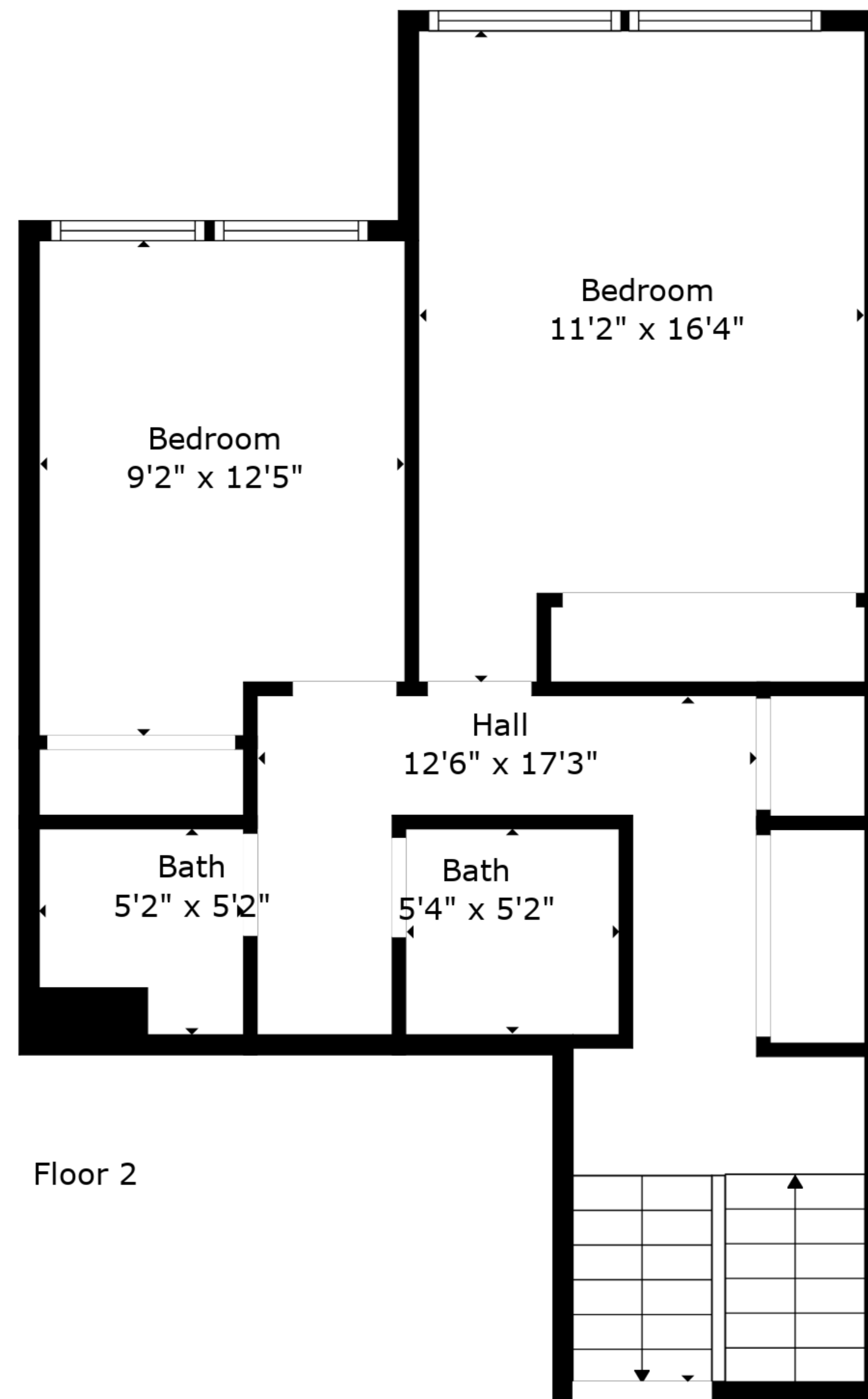
FLOOR 1: 431 sq. ft, FLOOR 2: 538 sq. ft, FLOOR 3: 510 sq. ft

EXCLUDED AREAS: PORCH: 52 sq. ft, ELECTRICAL ROOM: 22 sq. ft, BALCONY: 54 sq. ft

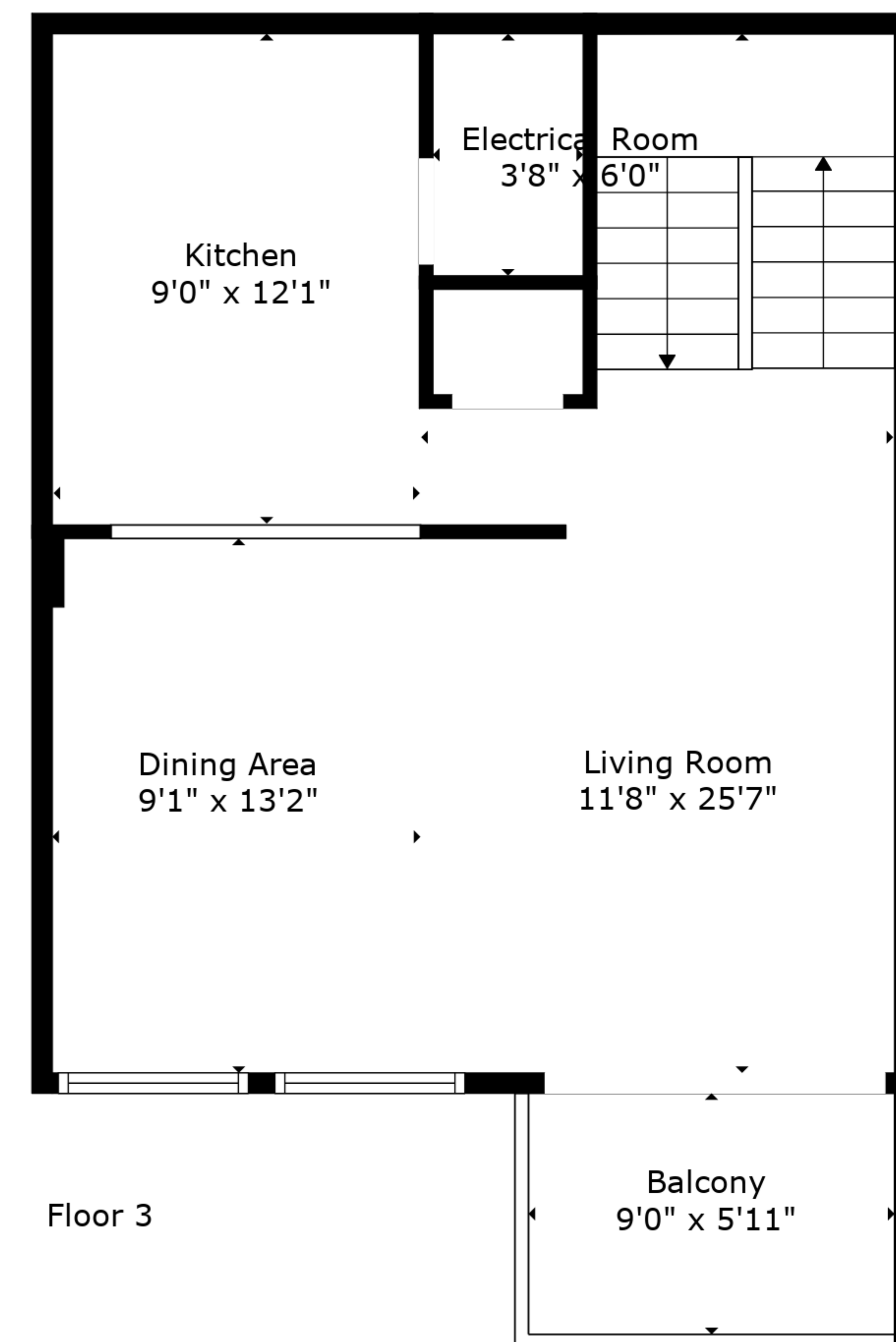
Created By Nordy Photography. Calculations Deemed Highly Reliable But Not Guaranteed.



Floor 1



Floor 2



Floor 3

TOTAL: 1479 sq. ft
 FLOOR 1: 431 sq. ft, FLOOR 2: 538 sq. ft, FLOOR 3: 510 sq. ft
 EXCLUDED AREAS: PORCH: 52 sq. ft, ELECTRICAL ROOM: 22 sq. ft, BALCONY: 54 sq. ft