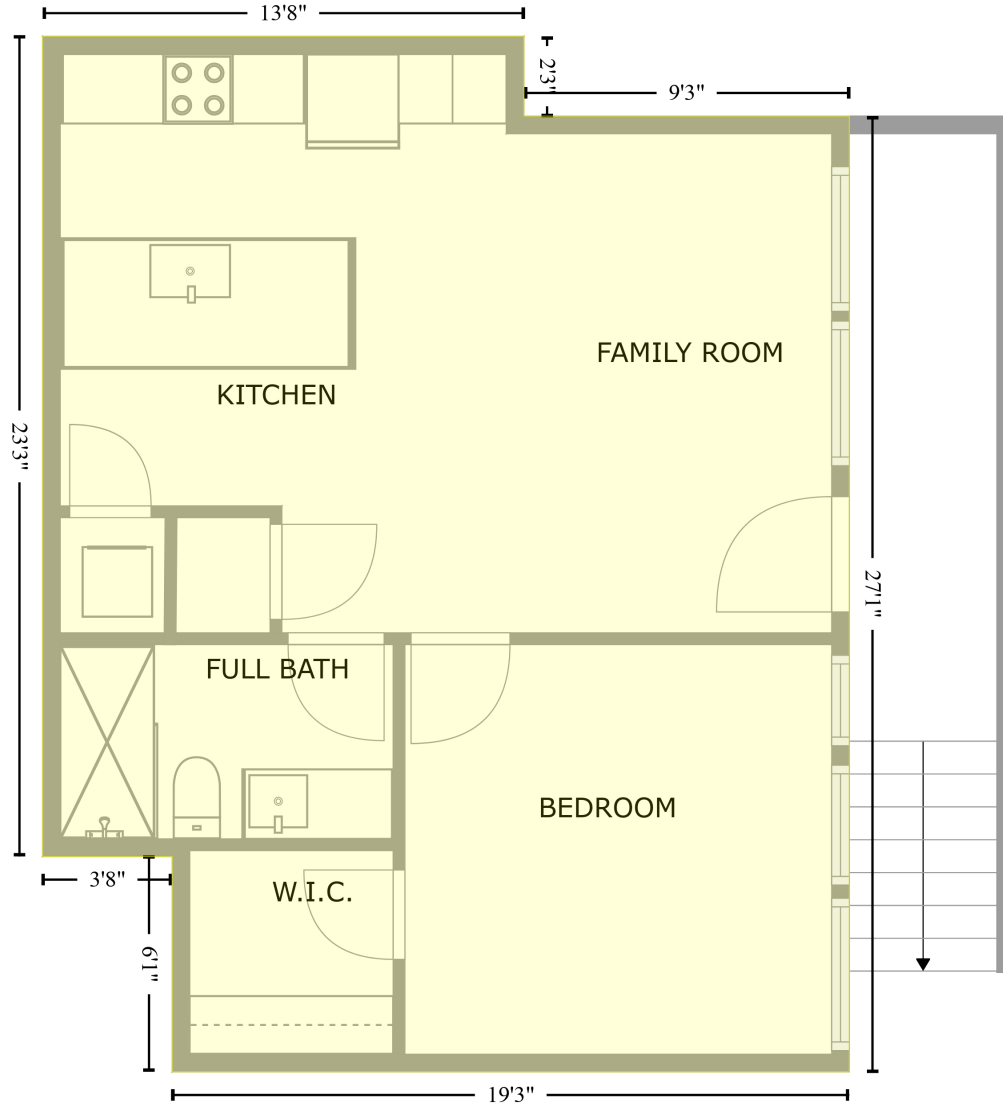


415 West University Avenue, Hillcrest, San Diego, San Diego County, California, United States, 92103

Gross Living Area: 1112 sq. ft

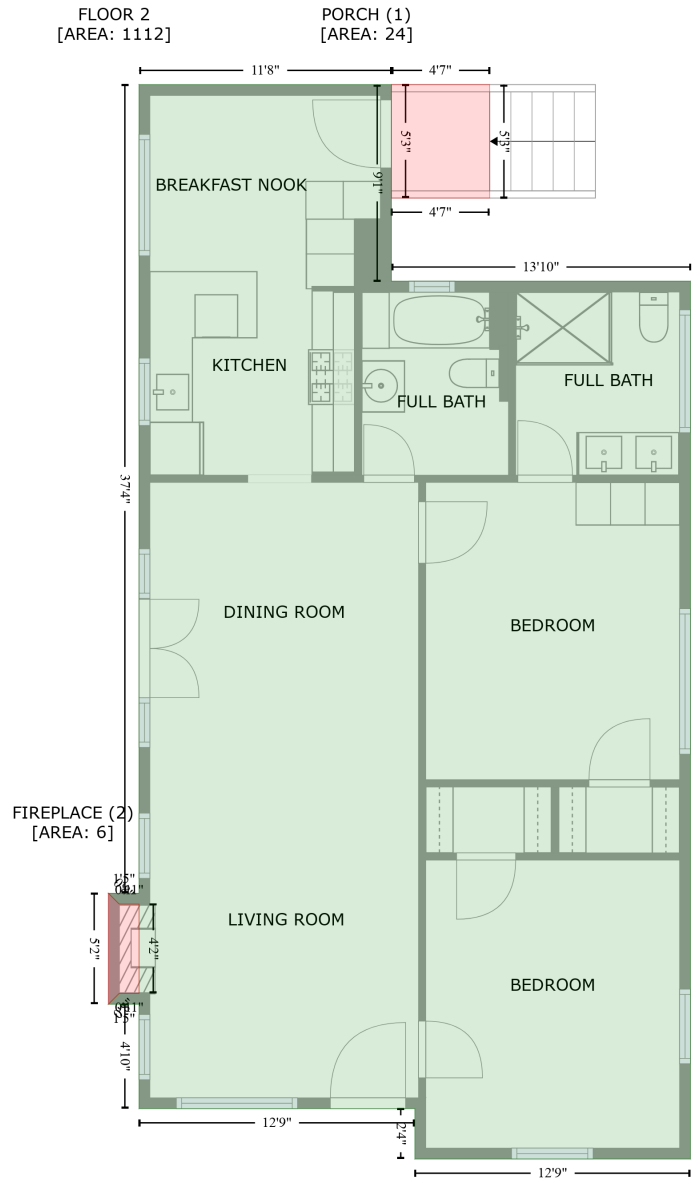
Below Ground
[AREA: 628]



Space	Area (sq. ft)	Calculation <small>Coordinate Polygon Area Algorithm using inches</small>
Below Ground (Living area)	628	$-\left((311 + 311) * (70.8 - 97.9) + (311 + 421.7) * (97.9 - 97.9) + (421.7 + 421.7) * (97.9 - 422.9) + (421.7 + 191.2) * (422.9 - 422.9) + (191.2 + 191.2) * (422.9 - 349.7) + (191.2 + 147.1) * (349.7 - 349.7) + (147.1 + 147.1) * (349.7 - 70.8) + (147.1 + 311) * (70.8 - 70.8)\right) * 0.5 * 0.00694$

415 West University Avenue, Hillcrest, San Diego, San Diego County, California, United States, 92103

Gross Living Area: 1112 sq. ft



Space	Area (sq. ft)	Calculation <small>Coordinate Polygon Area Algorithm using inches</small>
FLOOR 2 (Living area)	1112	$ \begin{aligned} & -((259.4 + 259.4) * (-39.6 - 69.4) + (259.4 + 425.5) * (69.4 - 69.4) + (425.5 + 425.5) * (69.4 - \\ & 556.2) + (425.5 + 272.5) * (556.2 - 556.2) + (272.5 + 272.5) * (556.2 - 528.3) + (272.5 + 119.4) * \\ & (528.3 - 528.3) + (119.4 + 119.4) * (528.3 - 470.4) + (119.4 + 102.3) * (470.4 - 470.4) + (102.3 + \\ & 108.3) * (470.4 - 464.4) + (108.3 + 119.4) * (464.4 - 464.4) + (119.4 + 119.4) * (464.4 - 414.9) + \\ & (119.4 + 108.3) * (414.9 - 414.9) + (108.3 + 102.3) * (414.9 - 408.9) + (102.3 + 119.4) * (408.9 - \\ & 408.9) + (119.4 + 119.4) * (408.9 - -39.6) + (119.4 + 259.4) * (-39.6 - -39.6)) * 0.5 * 0.00694 \end{aligned} $

415 West University Avenue, Hillcrest, San Diego, San Diego County, California, United States, 92103

Gross Living Area: 1112 sq. ft

Space	Area (sq. ft)	Calculation <small>Coordinate Polygon Area Algorithm using inches</small>
PORCH (Non-living area)	24	$-((314 + 314) * (-39.6 - 23.3) + (314 + 259.4) * (23.3 - 23.3) + (259.4 + 259.4) * (23.3 - -39.6) + (259.4 + 314) * (-39.6 - -39.6)) * 0.5 * 0.00694$
FIREPLACE (Non-living area)	6	$-((102.3 + 108.3) * (408.9 - 414.9) + (108.3 + 119.4) * (414.9 - 414.9) + (119.4 + 119.4) * (414.9 - 464.4) + (119.4 + 108.3) * (464.4 - 464.4) + (108.3 + 102.3) * (464.4 - 470.4) + (102.3 + 102.3) * (470.4 - 408.9)) * 0.5 * 0.00694$