

202-11671 Fraser St

Maple Ridge, BC V2X 6C4

Total Area 797SQ.FT.

Patio Area: 79 SQ.FT.

Ceiling Height: 8'0"

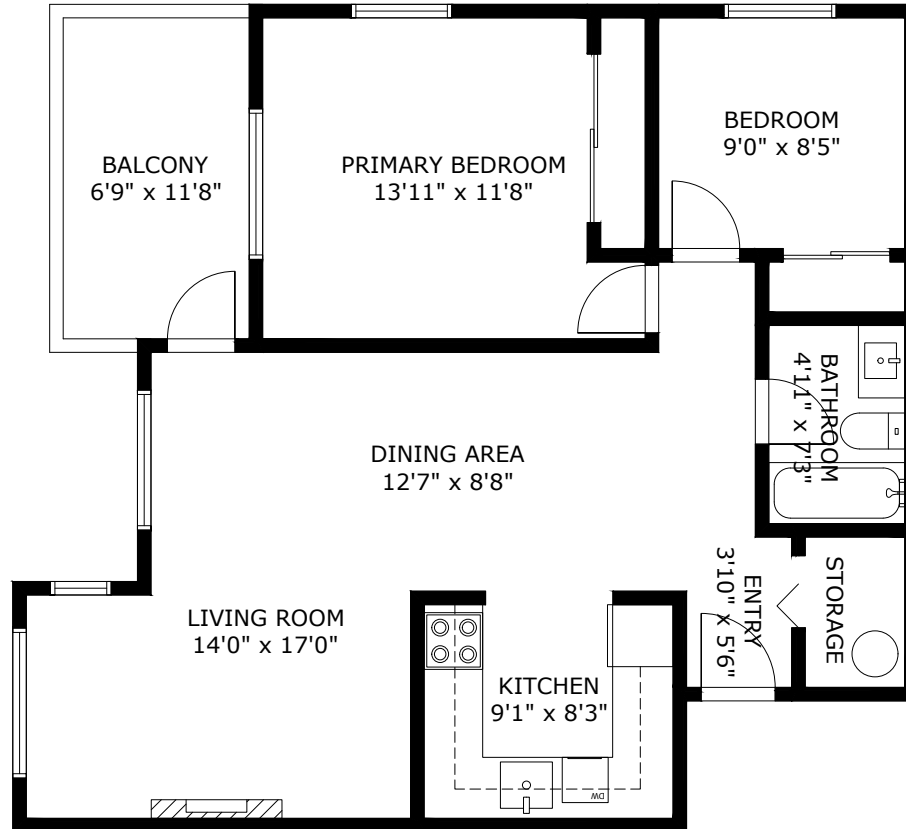
2



1



797



202-11671 FRASER ST MAPLE RIDGE BC V2X 6C4

Measurements are approximate and may not be to scale. Gross measurements provided by agent.
The floor plan illustration is not suitable for construction/architectural purposes.
This communication is not intended to cause or induce breach of an existing agency agreement


3D IMMERSIVE
Tours Photos Floor Plans

Professionally measured by 3D Immersive Marketing Ltd.
Lead Floor Planner: *Simon Alexander*
Quality Assurance: *Francine Graham*