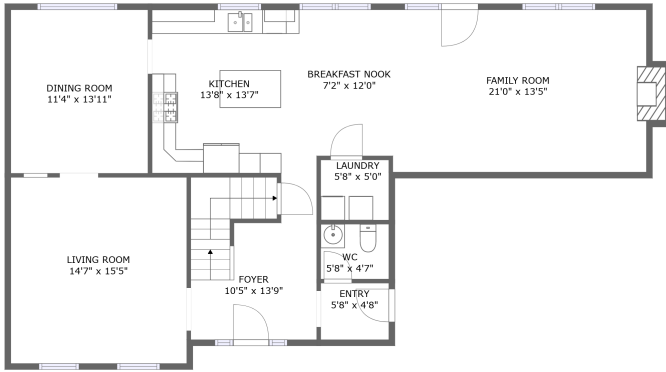
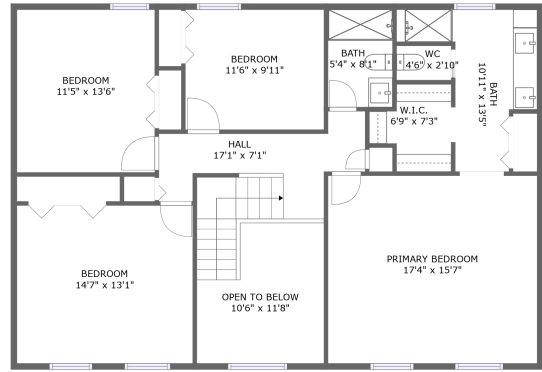


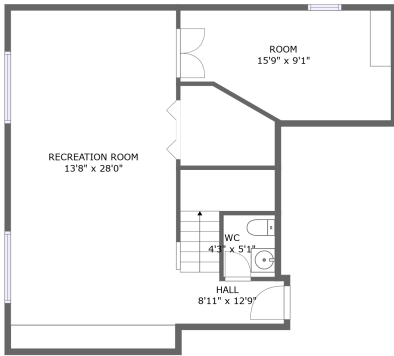
208 Trillium Drive, Cranberry Township, Butler County, Pennsylvania, United States, 16066



FLOOR 2



FLOOR 3



FLOOR 1

Property Summary



3 floors



4 bedrooms



2 bathrooms



3,346 total sqft

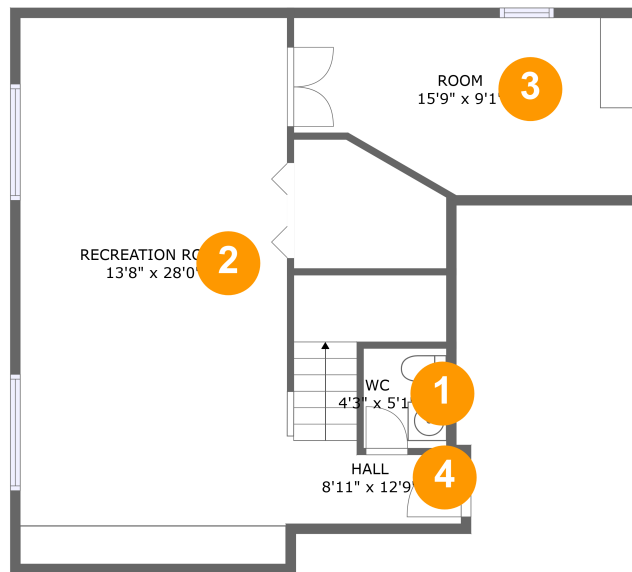


0 garages



3,228 Gross Living Area sqft

208 Trillium Drive, Cranberry Township, Butler County, Pennsylvania, United States, 16066



Room Dimensions

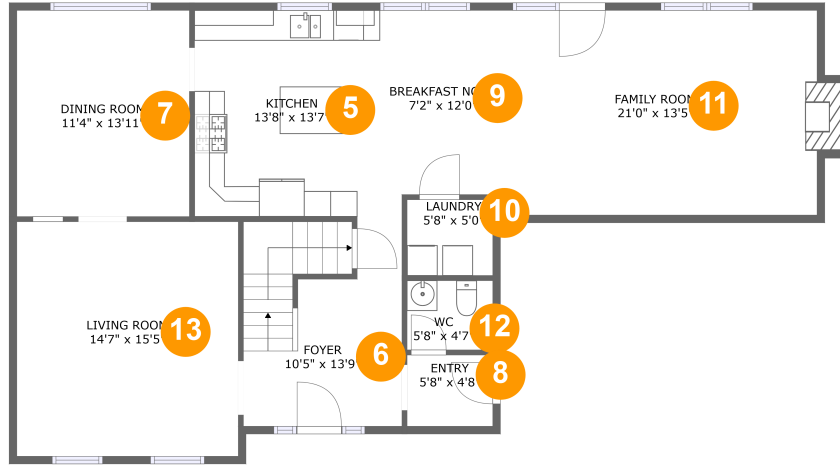
Floor 1

Total sqft: 748

Living area: 748

#	Room name	Dimensions	Area (sqft)	Counted as Living Area
1	Wc	4'3" x 5'1"	22 sq. ft	Yes
2	Recreation Room	13'8" x 28'0"	384 sq. ft	Yes
3	Room	15'9" x 9'1"	141 sq. ft	Yes
4	Hall	8'11" x 12'9"	78 sq. ft	Yes

208 Trillium Drive, Cranberry Township, Butler County, Pennsylvania, United States, 16066



Room Dimensions

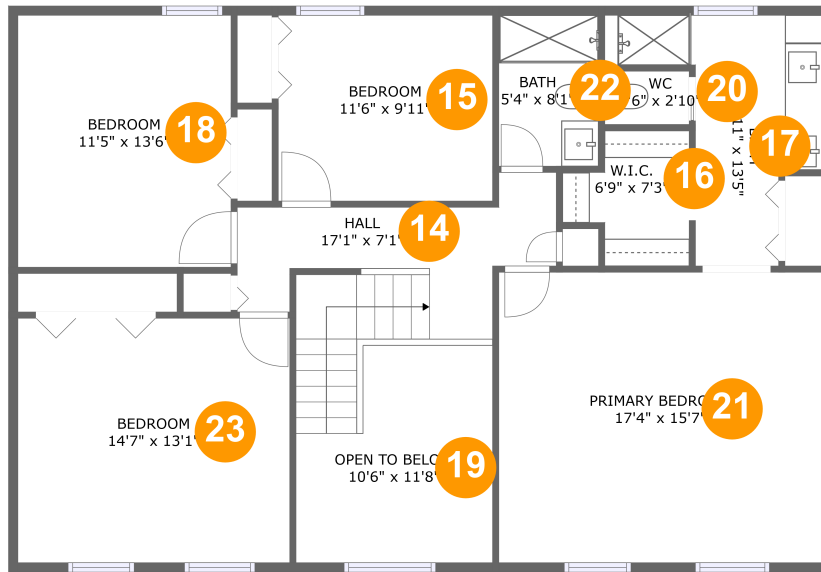
Floor 2

Total sqft: 1262

Living area: 1255

#	Room name	Dimensions	Area (sqft)	Counted as Living Area
5	Kitchen	13'8" x 13'7"	175 sq. ft	Yes
6	Foyer	10'5" x 13'9"	138 sq. ft	Yes
7	Dining Room	11'4" x 13'11"	154 sq. ft	Yes
8	Entry	5'8" x 4'8"	26 sq. ft	Yes
9	Breakfast Nook	7'2" x 12'0"	86 sq. ft	Yes
10	Laundry	5'8" x 5'0"	28 sq. ft	Yes
11	Family Room	21'0" x 13'5"	289 sq. ft	Yes
12	Wc	5'8" x 4'7"	26 sq. ft	Yes
13	Living Room	14'7" x 15'5"	225 sq. ft	Yes

208 Trillium Drive, Cranberry Township, Butler County, Pennsylvania, United States, 16066



Room Dimensions

Floor 3

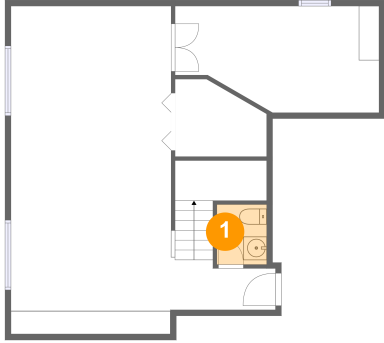
Total sqft: 1336

Living area: 1225

#	Room name	Dimensions	Area (sqft)	Counted as Living Area
14	Hall	17'1" x 7'1"	127 sq. ft	Yes
15	Bedroom	11'6" x 9'11"	114 sq. ft	Yes
16	W.i.c.	6'9" x 7'3"	39 sq. ft	Yes
17	Bath	10'11" x 13'5"	93 sq. ft	Yes
18	Bedroom	11'5" x 13'6"	154 sq. ft	Yes
19	Open To Below	10'6" x 11'8"	106 sq. ft	No
20	Wc	4'6" x 2'10"	13 sq. ft	Yes
21	Primary Bedroom	17'4" x 15'7"	269 sq. ft	Yes
22	Bath	5'4" x 8'1"	43 sq. ft	Yes
23	Bedroom	14'7" x 13'1"	191 sq. ft	Yes

208 Trillium Drive, Cranberry Township, Butler County, Pennsylvania, United States, 16066

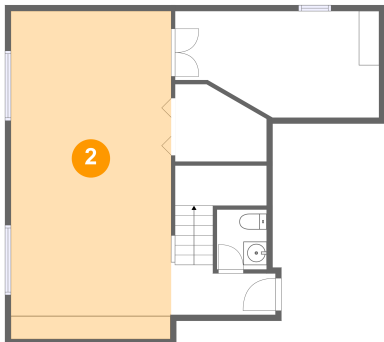
1 Floor 1 - Wc



Dimensions: 4'3" x 5'1"
Area: 22 sq. ft
Counted as Living Area:
Yes

Heated: Yes
Finished: Yes
Enclosed: Yes
Contiguous:
Yes
Permitted: Yes
Wet Space: Yes
Addition: No
Conversion: No

2 Floor 1 - Recreation Room

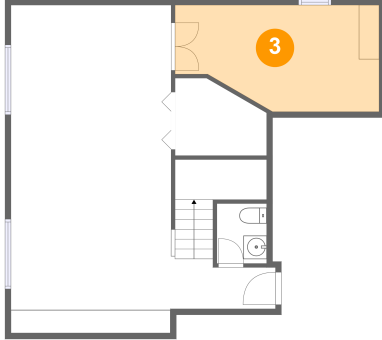


Dimensions: 13'8" x 28'0"
Area: 384 sq. ft
Counted as Living Area:
Yes

Heated: Yes
Finished: Yes
Enclosed: Yes
Contiguous:
Yes
Permitted: Yes
Wet Space: No
Addition: No
Conversion: No

208 Trillium Drive, Cranberry Township, Butler County, Pennsylvania, United States, 16066

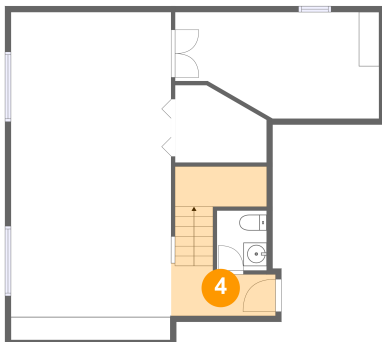
3 Floor 1 - Room



Dimensions: 15'9" x 9'1"
Area: 141 sq. ft
Counted as Living Area:
Yes

Heated: Yes
Finished: Yes
Enclosed: Yes
Contiguous:
Yes
Permitted: Yes
Wet Space: No
Addition: No
Conversion: No

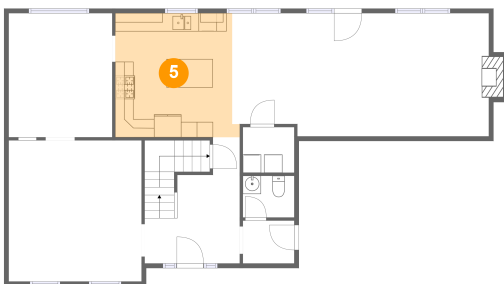
4 Floor 1 - Hall



Dimensions: 8'11" x 12'9"
Area: 78 sq. ft
Counted as Living Area:
Yes

Heated: Yes
Finished: Yes
Enclosed: Yes
Contiguous:
Yes
Permitted: Yes
Wet Space: No
Addition: No
Conversion: No

5 Floor 2 - Kitchen

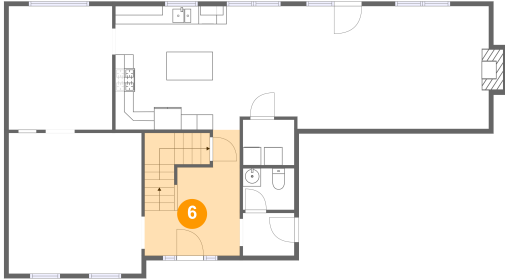


Dimensions: 13'8" x 13'7"
Area: 175 sq. ft
Counted as Living Area:
Yes

Heated: Yes
Finished: Yes
Enclosed: Yes
Contiguous:
Yes
Permitted: Yes
Wet Space: No
Addition: No
Conversion: No

208 Trillium Drive, Cranberry Township, Butler County, Pennsylvania, United States, 16066

6 Floor 2 - Foyer



Dimensions: 10'5" x 13'9"
Area: 138 sq. ft
Counted as Living Area:
Yes

Heated: Yes
Finished: Yes
Enclosed: Yes
Contiguous:
Yes
Permitted: Yes
Wet Space: No
Addition: No
Conversion: No

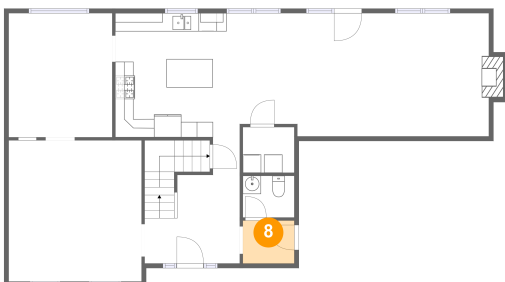
7 Floor 2 - Dining Room



Dimensions: 11'4" x 13'11"
Area: 154 sq. ft
Counted as Living Area:
Yes

Heated: Yes
Finished: Yes
Enclosed: Yes
Contiguous:
Yes
Permitted: Yes
Wet Space: No
Addition: No
Conversion: No

8 Floor 2 - Entry



Dimensions: 5'8" x 4'8"
Area: 26 sq. ft
Counted as Living Area:
Yes

Heated: Yes
Finished: Yes
Enclosed: Yes
Contiguous:
Yes
Permitted: Yes
Wet Space: No
Addition: No
Conversion: No

208 Trillium Drive, Cranberry Township, Butler County, Pennsylvania, United States, 16066

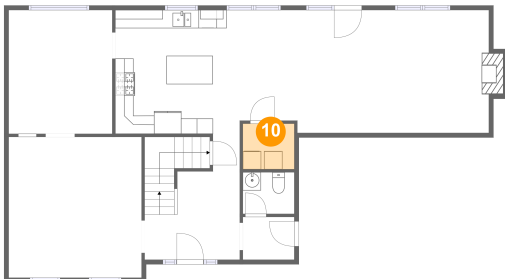
9 Floor 2 - Breakfast Nook



Dimensions: 7'2" x 12'0"
Area: 86 sq. ft
Counted as Living Area:
Yes

Heated: Yes
Finished: Yes
Enclosed: Yes
Contiguous:
Yes
Permitted: Yes
Wet Space: No
Addition: No
Conversion: No

10 Floor 2 - Laundry



Dimensions: 5'8" x 5'0"
Area: 28 sq. ft
Counted as Living Area:
Yes

Heated: Yes
Finished: Yes
Enclosed: Yes
Contiguous:
Yes
Permitted: Yes
Wet Space: No
Addition: No
Conversion: No

11 Floor 2 - Family Room

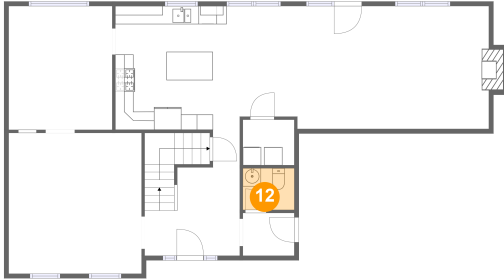


Dimensions: 21'0" x 13'5"
Area: 289 sq. ft
Counted as Living Area:
Yes

Heated: Yes
Finished: Yes
Enclosed: Yes
Contiguous:
Yes
Permitted: Yes
Wet Space: No
Addition: No
Conversion: No

208 Trillium Drive, Cranberry Township, Butler County, Pennsylvania, United States, 16066

12 Floor 2 - Wc



Dimensions: 5'8" x 4'7"
Area: 26 sq. ft
Counted as Living Area:
Yes

Heated: Yes
Finished: Yes
Enclosed: Yes
Contiguous:
Yes
Permitted: Yes
Wet Space: Yes
Addition: No
Conversion: No

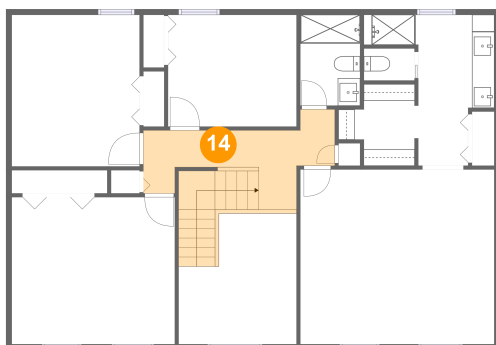
13 Floor 2 - Living Room



Dimensions: 14'7" x 15'5"
Area: 225 sq. ft
Counted as Living Area:
Yes

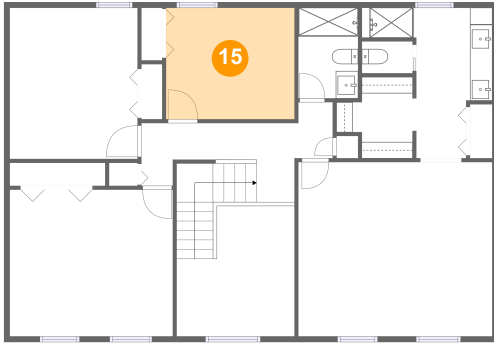
Heated: Yes
Finished: Yes
Enclosed: Yes
Contiguous:
Yes
Permitted: Yes
Wet Space: No
Addition: No
Conversion: No

14 Floor 3 - Hall



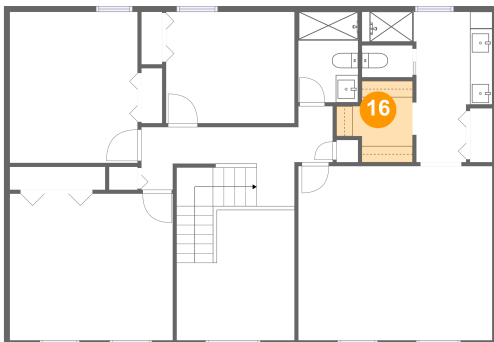
Dimensions: 17'1" x 7'1"
Area: 127 sq. ft
Counted as Living Area:
Yes

Heated: Yes
Finished: Yes
Enclosed: Yes
Contiguous:
Yes
Permitted: Yes
Wet Space: No
Addition: No
Conversion: No

208 Trillium Drive, Cranberry Township, Butler County, Pennsylvania, United States, 16066**15 Floor 3 - Bedroom**

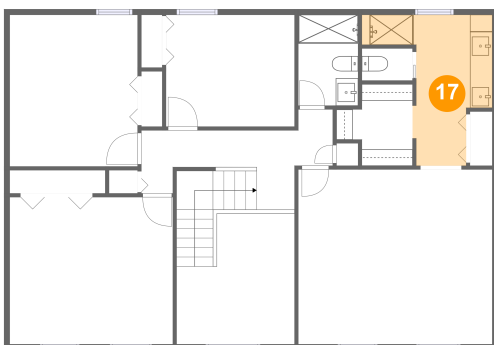
Dimensions: 11'6" x 9'11"
Area: 114 sq. ft
Counted as Living Area:
Yes

Heated: Yes
Finished: Yes
Enclosed: Yes
Contiguous:
Yes
Permitted: Yes
Wet Space: No
Addition: No
Conversion: No

16 Floor 3 - W.i.c.

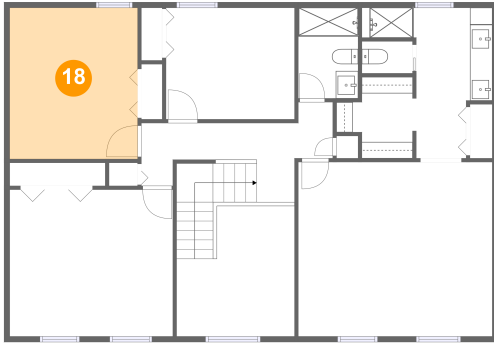
Dimensions: 6'9" x 7'3"
Area: 39 sq. ft
Counted as Living Area:
Yes

Heated: Yes
Finished: Yes
Enclosed: Yes
Contiguous:
Yes
Permitted: Yes
Wet Space: No
Addition: No
Conversion: No

17 Floor 3 - Bath

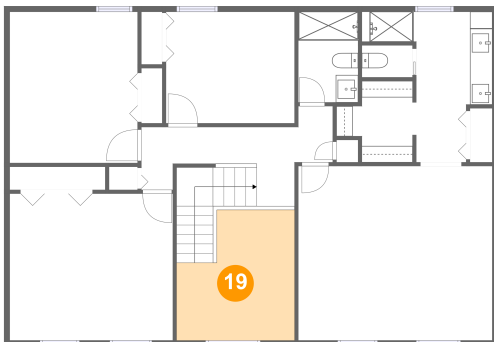
Dimensions: 10'11" x 13'5"
Area: 93 sq. ft
Counted as Living Area:
Yes

Heated: Yes
Finished: Yes
Enclosed: Yes
Contiguous:
Yes
Permitted: Yes
Wet Space: Yes
Addition: No
Conversion: No

208 Trillium Drive, Cranberry Township, Butler County, Pennsylvania, United States, 16066**18 Floor 3 - Bedroom**

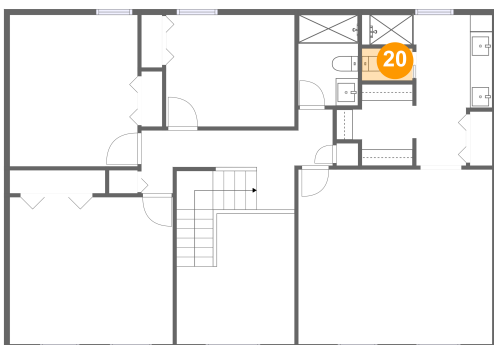
Dimensions: 11'5" x 13'6"
Area: 154 sq. ft
Counted as Living Area:
Yes

Heated: Yes
Finished: Yes
Enclosed: Yes
Contiguous:
Yes
Permitted: Yes
Wet Space: No
Addition: No
Conversion: No

19 Floor 3 - Open To Below

Dimensions: 10'6" x 11'8"
Area: 106 sq. ft
Counted as Living Area: No

Heated: No
Finished: No
Enclosed: No
Contiguous: Yes
Permitted: No
Wet Space: No
Addition: No
Conversion: No

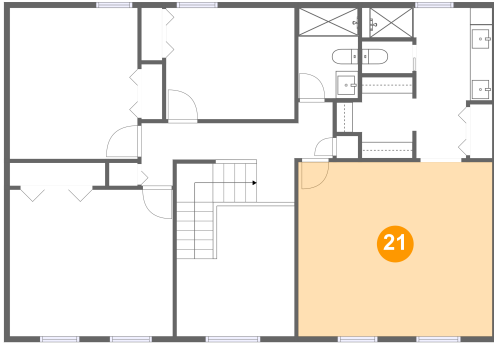
20 Floor 3 - Wc

Dimensions: 4'6" x 2'10"
Area: 13 sq. ft
Counted as Living Area:
Yes

Heated: Yes
Finished: Yes
Enclosed: Yes
Contiguous:
Yes
Permitted: Yes
Wet Space: Yes
Addition: No
Conversion: No

208 Trillium Drive, Cranberry Township, Butler County, Pennsylvania, United States, 16066

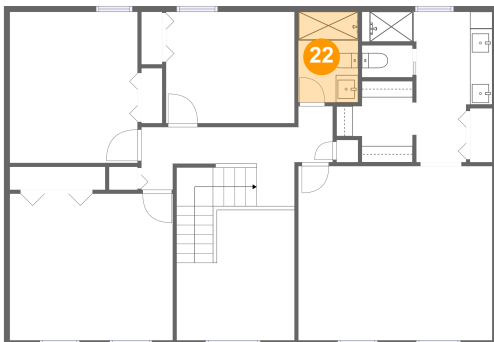
21 Floor 3 - Primary Bedroom



Dimensions: 17'4" x 15'7"
Area: 269 sq. ft
Counted as Living Area:
Yes

Heated: Yes
Finished: Yes
Enclosed: Yes
Contiguous:
Yes
Permitted: Yes
Wet Space: No
Addition: No
Conversion: No

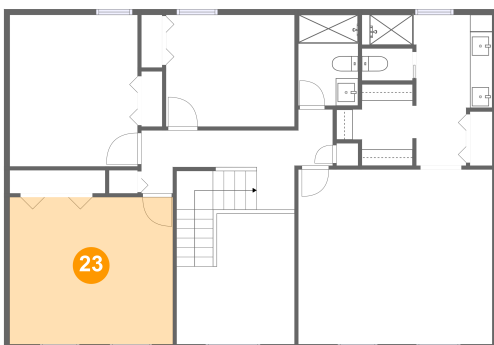
22 Floor 3 - Bath



Dimensions: 5'4" x 8'1"
Area: 43 sq. ft
Counted as Living Area:
Yes

Heated: Yes
Finished: Yes
Enclosed: Yes
Contiguous:
Yes
Permitted: Yes
Wet Space: Yes
Addition: No
Conversion: No

23 Floor 3 - Bedroom



Dimensions: 14'7" x 13'1"
Area: 191 sq. ft
Counted as Living Area:
Yes

Heated: Yes
Finished: Yes
Enclosed: Yes
Contiguous:
Yes
Permitted: Yes
Wet Space: No
Addition: No
Conversion: No