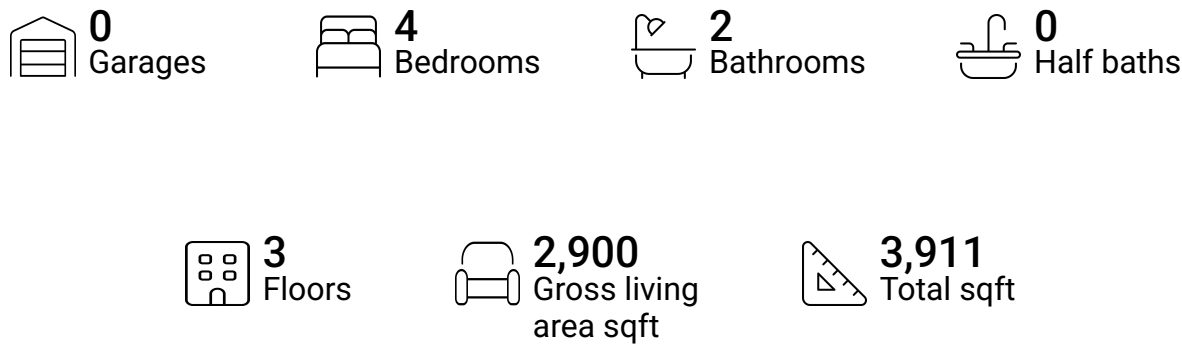


Home report

1307 Rittenhouse Street, Lynchburg, Virginia 24502, United States

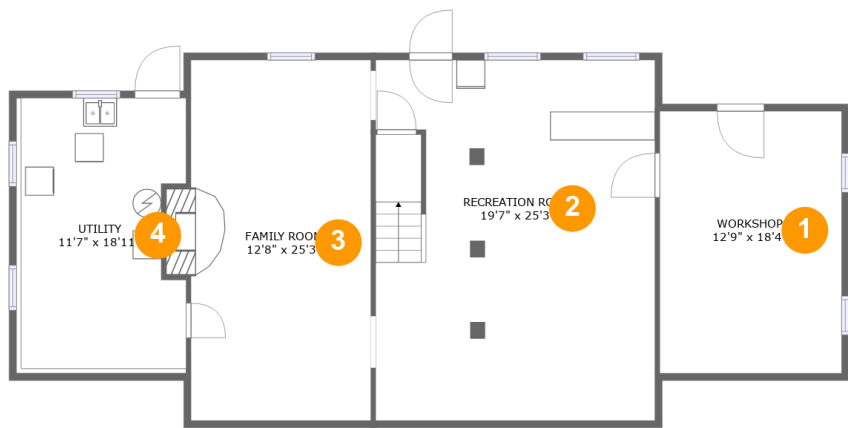


Property summary



Home report

1307 Rittenhouse Street, Lynchburg, Virginia 24502, United States



Room dimensions

Floor 1 Total sqft: 1383 Living area: 886

#		Max Dimensions	sqft	Included
1	Workshop	12'9" x 18'4"	234 sq. ft	No
2	Recreation Room	19'7" x 25'3"	492 sq. ft	Yes
3	Family Room	12'8" x 25'3"	330 sq. ft	Yes
4	Utility	11'7" x 18'11"	218 sq. ft	No

Home report

1307 Rittenhouse Street, Lynchburg, Virginia 24502, United States



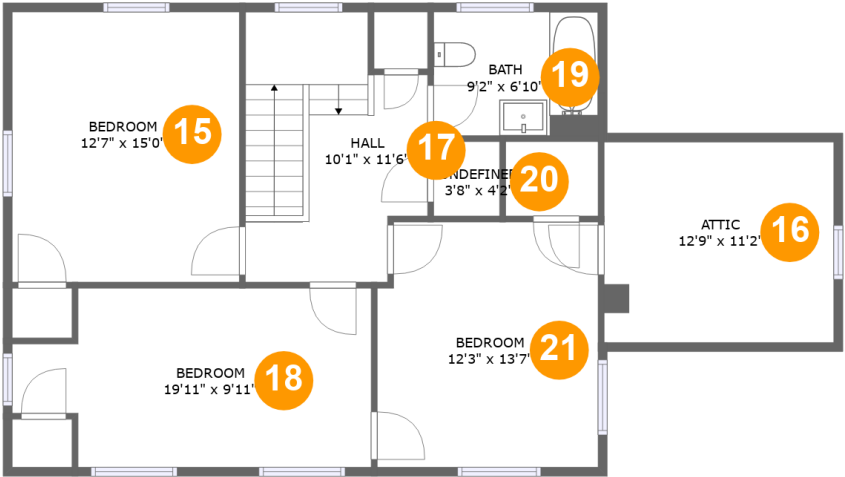
Room dimensions

Floor 2 Total sqft: 1489 Living area: 1135

#		Max Dimensions	sqft	Included
5	Entry	7'0" x 3'8"	26 sq. ft	Yes
6	Bedroom	12'9" x 10'11"	140 sq. ft	Yes
7	Foyer	7'0" x 21'3"	147 sq. ft	Yes
8	Bath	6'8" x 7'1"	42 sq. ft	Yes
9	Dining Area	12'3" x 14'3"	175 sq. ft	Yes
10	Pantry	5'9" x 4'11"	28 sq. ft	Yes
11	Living Room	12'8" x 25'3"	327 sq. ft	Yes
12	Screened Porch	11'9" x 19'3"	217 sq. ft	No
13	Kitchen	12'3" x 10'11"	126 sq. ft	Yes
14	Deck	9'10" x 6'10"	106 sq. ft	No

Home report

1307 Rittenhouse Street, Lynchburg, Virginia 24502, United States



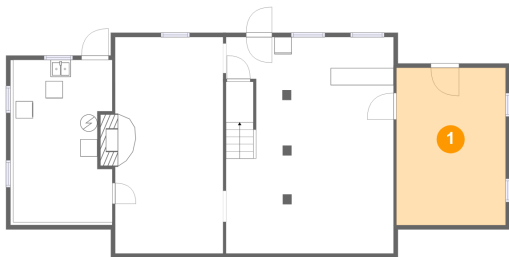
Room dimensions

Floor 3 Total sqft: 1039 Living area: 879

#		Max Dimensions	sqft	Included
15	Bedroom	12'7" x 15'0"	189 sq. ft	Yes
16	Attic	12'9" x 11'2"	48 sq. ft	No
17	Hall	10'1" x 11'6"	132 sq. ft	Yes
18	Bedroom	19'11" x 9'11"	176 sq. ft	Yes
19	Bath	9'2" x 6'10"	63 sq. ft	Yes
20	Undefined	3'8" x 4'2"	15 sq. ft	Yes
21	Bedroom	12'3" x 13'7"	164 sq. ft	Yes

1307 Rittenhouse Street, Lynchburg, Virginia 24502, United States

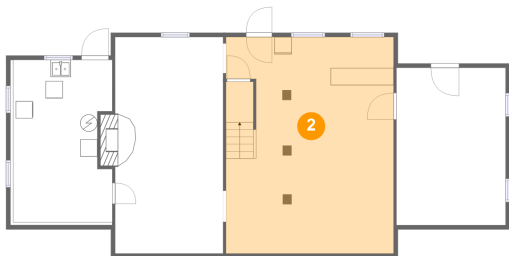
1 Floor 1 - Workshop



Max Dimensions: 12'9" x 18'4"
Calculated Area: 234 sq. ft
Included: No

Heated: No
Finished: No
Enclosed: Yes
Contiguous: Yes
Permitted: Yes
Wet space: No
Addition: No
Conversion: No

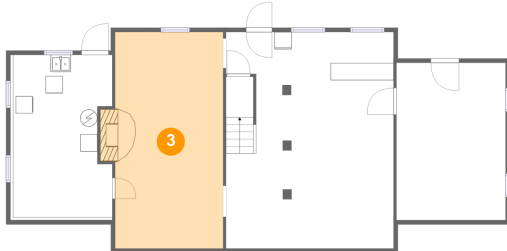
2 Floor 1 - Recreation Room



Max Dimensions: 19'7" x 25'3"
Calculated Area: 492 sq. ft
Included: Yes

Heated: Yes
Finished: Yes
Enclosed: Yes
Contiguous: Yes
Permitted: Yes
Wet space: No
Addition: No
Conversion: No

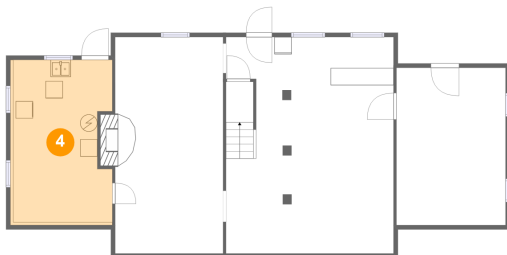
3 Floor 1 - Family Room



Max Dimensions: 12'8" x 25'3"
Calculated Area: 330 sq. ft
Included: Yes

Heated: Yes
Finished: Yes
Enclosed: Yes
Contiguous: Yes
Permitted: Yes
Wet space: No
Addition: No
Conversion: No

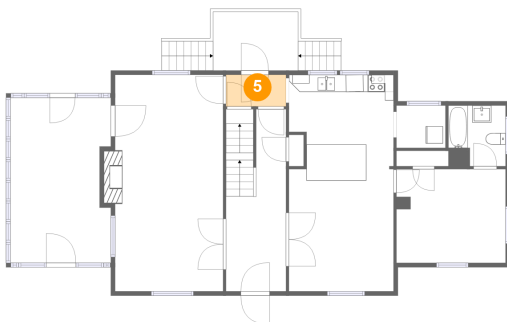
4 Floor 1 - Utility



Max Dimensions: 11'7" x 18'11"
Calculated Area: 218 sq. ft
Included: No

Heated: Yes
Finished: No
Enclosed: Yes
Contiguous: Yes
Permitted: Yes
Wet space: No
Addition: No
Conversion: No

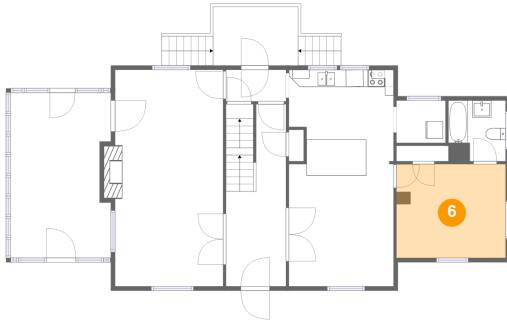
5 Floor 2 - Entry



Max Dimensions: 7'0" x 3'8"
Calculated Area: 26 sq. ft
Included: Yes

Heated: Yes
Finished: Yes
Enclosed: Yes
Contiguous: Yes
Permitted: Yes
Wet space: No
Addition: No
Conversion: No

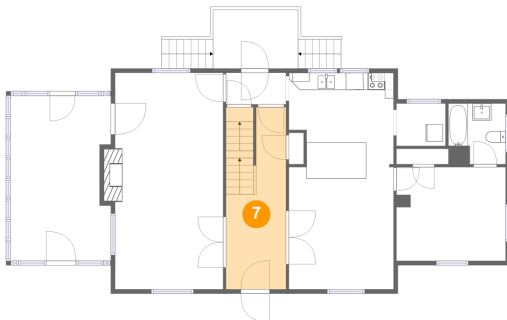
6 Floor 2 - Bedroom



Max Dimensions: 12'9" x 10'11"
Calculated Area: 140 sq. ft
Included: Yes

Heated: Yes
Finished: Yes
Enclosed: Yes
Contiguous: Yes
Permitted: Yes
Wet space: No
Addition: No
Conversion: No

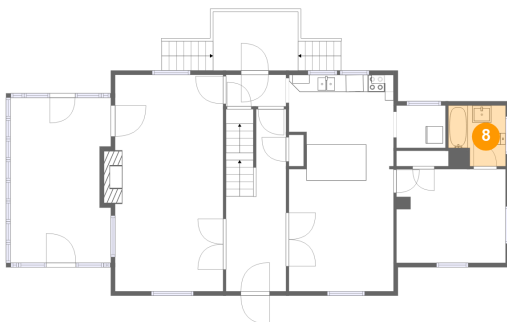
7 Floor 2 - Foyer



Max Dimensions: 7'0" x 21'3"
Calculated Area: 147 sq. ft
Included: Yes

Heated: Yes
Finished: Yes
Enclosed: Yes
Contiguous: Yes
Permitted: Yes
Wet space: No
Addition: No
Conversion: No

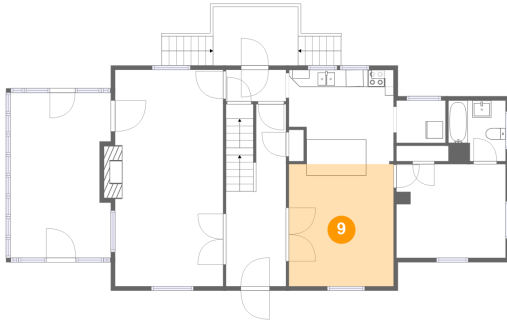
8 Floor 2 - Bath



Max Dimensions: 6'8" x 7'1"
Calculated Area: 42 sq. ft
Included: Yes

Heated: Yes
Finished: Yes
Enclosed: Yes
Contiguous: Yes
Permitted: Yes
Wet space: Yes
Addition: No
Conversion: No

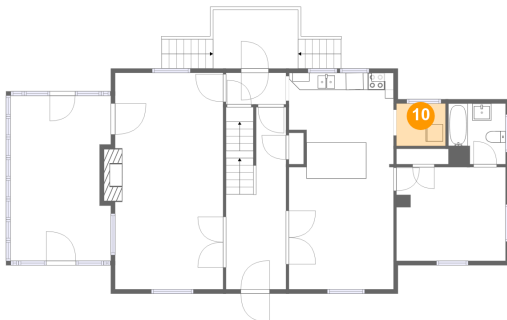
9 Floor 2 - Dining Area



Max Dimensions: 12'3" x 14'3"
Calculated Area: 175 sq. ft
Included: Yes

Heated: Yes
Finished: Yes
Enclosed: Yes
Contiguous: Yes
Permitted: Yes
Wet space: No
Addition: No
Conversion: No

10 Floor 2 - Pantry



Max Dimensions: 5'9" x 4'11"
Calculated Area: 28 sq. ft
Included: Yes

Heated: Yes
Finished: Yes
Enclosed: Yes
Contiguous: Yes
Permitted: Yes
Wet space: No
Addition: No
Conversion: No

11 Floor 2 - Living Room

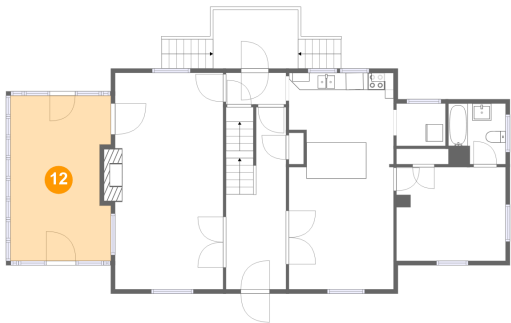


Max Dimensions: 12'8" x 25'3"
Calculated Area: 327 sq. ft
Included: Yes

Heated: Yes
Finished: Yes
Enclosed: Yes
Contiguous: Yes
Permitted: Yes
Wet space: No
Addition: No
Conversion: No

1307 Rittenhouse Street, Lynchburg, Virginia 24502, United States

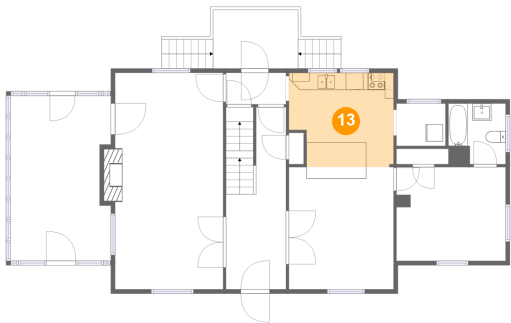
12 Floor 2 - Screened Porch



Max Dimensions: 11'9" x 19'3"
Calculated Area: 217 sq. ft
Included: No

Heated: No
Finished: Yes
Enclosed: No
Contiguous: Yes
Permitted: Yes
Wet space: No
Addition: No
Conversion: No

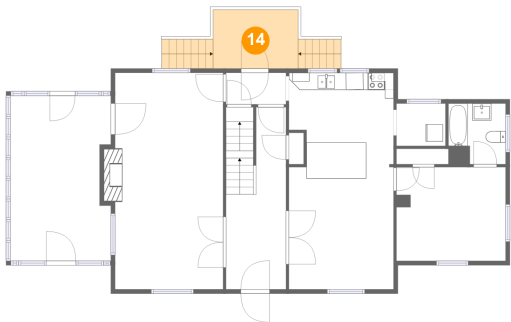
13 Floor 2 - Kitchen



Max Dimensions: 12'3" x 10'11"
Calculated Area: 126 sq. ft
Included: Yes

Heated: Yes
Finished: Yes
Enclosed: Yes
Contiguous: Yes
Permitted: Yes
Wet space: No
Addition: No
Conversion: No

14 Floor 2 - Deck

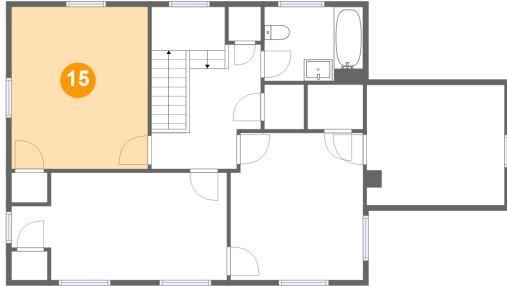


Max Dimensions: 9'10" x 6'10"
Calculated Area: 106 sq. ft
Included: No

Heated: No
Finished: Yes
Enclosed: No
Contiguous: Yes
Permitted: Yes
Wet space: No
Addition: No
Conversion: No

1307 Rittenhouse Street, Lynchburg, Virginia 24502, United States

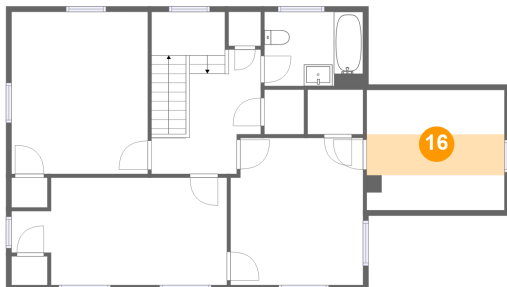
15 Floor 3 - Bedroom



Max Dimensions: 12'7" x 15'0"
Calculated Area: 189 sq. ft
Included: Yes

Heated: Yes
Finished: Yes
Enclosed: Yes
Contiguous: Yes
Permitted: Yes
Wet space: No
Addition: No
Conversion: No

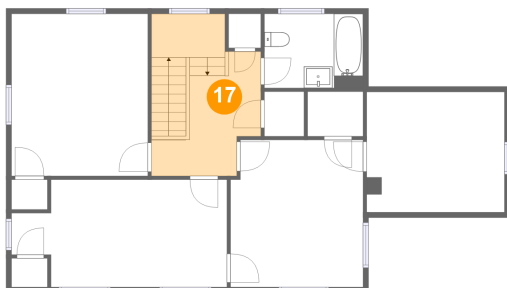
16 Floor 3 - Attic



Max Dimensions: 12'9" x 11'2"
Calculated Area: 48 sq. ft
Included: No

Heated: No
Finished: No
Enclosed: Yes
Contiguous: Yes
Permitted: Yes
Wet space: No
Addition: No
Conversion: No

17 Floor 3 - Hall

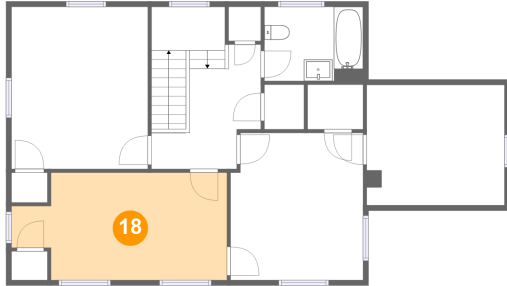


Max Dimensions: 10'1" x 11'6"
Calculated Area: 132 sq. ft
Included: Yes

Heated: Yes
Finished: Yes
Enclosed: Yes
Contiguous: Yes
Permitted: Yes
Wet space: No
Addition: No
Conversion: No

1307 Rittenhouse Street, Lynchburg, Virginia 24502, United States

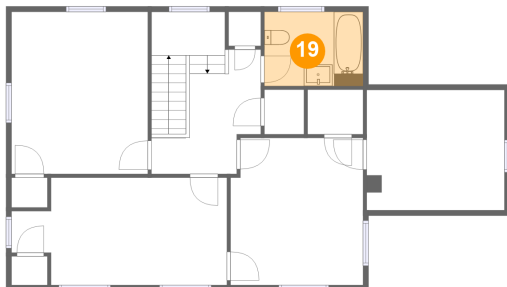
18 Floor 3 - Bedroom



Max Dimensions: 19'11" x 9'11"
Calculated Area: 176 sq. ft
Included: Yes

Heated: Yes
Finished: Yes
Enclosed: Yes
Contiguous: Yes
Permitted: Yes
Wet space: No
Addition: No
Conversion: No

19 Floor 3 - Bath



Max Dimensions: 9'2" x 6'10"
Calculated Area: 63 sq. ft
Included: Yes

Heated: Yes
Finished: Yes
Enclosed: Yes
Contiguous: Yes
Permitted: Yes
Wet space: Yes
Addition: No
Conversion: No

20 Floor 3 - Undefined

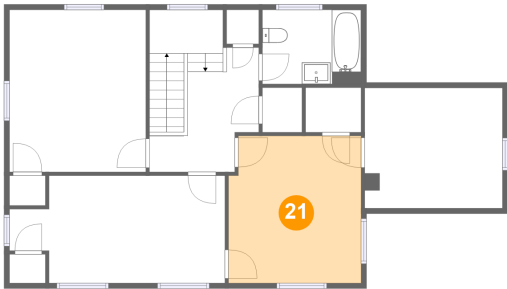


Max Dimensions: 3'8" x 4'2"
Calculated Area: 15 sq. ft
Included: Yes

Heated: Yes
Finished: Yes
Enclosed: Yes
Contiguous: Yes
Permitted: Yes
Wet space: Yes
Addition: No
Conversion: No

1307 Rittenhouse Street, Lynchburg, Virginia 24502, United States

21 Floor 3 - Bedroom



Max Dimensions: 12'3" x 13'7"
Calculated Area: 164 sq. ft
Included: Yes

Heated: Yes
Finished: Yes
Enclosed: Yes
Contiguous: Yes
Permitted: Yes
Wet space: No
Addition: No
Conversion: No