



Home report


245 Lee Street, Forest River, Mount Prospect, Cook County,
Illinois, United States, 60056





Property summary


 **1** Garages


 **3** Bedrooms

 **2** Bathrooms

 **0** Half baths

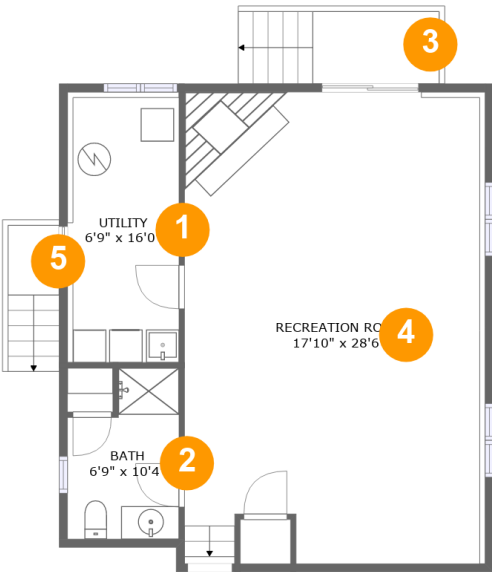
 **3** Floors

 **2,259** Gross living area sqft

 **3,957** Total sqft

Home report

245 Lee Street, Forest River, Mount Prospect, Cook County,
Illinois, United States, 60056



Room dimensions

Floor 1 Total sqft: 766 Living area: 766

#		Dimensions	sqft	Counted as living area
1	Utility	6'9" x 16'0"	110 sq. ft	Yes
2	Bath	6'9" x 10'4"	61 sq. ft	Yes
3	Outdoor	7'7" x 4'4"	33 sq. ft	No
4	Recreation Room	17'10" x 28'6"	508 sq. ft	Yes
5	Outdoor	3'0" x 4'3"	13 sq. ft	No

Home report

245 Lee Street, Forest River, Mount Prospect, Cook County,
Illinois, United States, 60056



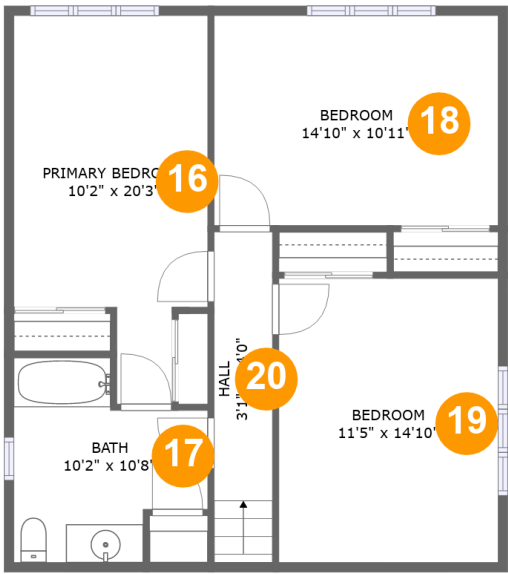
Room dimensions

Floor 2 Total sqft: 2415 Living area: 717

#		Dimensions	sqft	Counted as living area
6	Garage	24'5" x 21'0"	511 sq. ft	No
7	Living Room	17'9" x 12'1"	214 sq. ft	Yes
8	Entry	7'3" x 3'5"	25 sq. ft	Yes
9	Patio	34'1" x 20'2"	440 sq. ft	No
10	Eat-in Kitchen	13'6" x 13'3"	177 sq. ft	Yes
11	Outdoor	7'10" x 4'4"	34 sq. ft	No
12	Dining Area	11'5" x 13'7"	156 sq. ft	Yes
13	Foyer	5'3" x 8'8"	38 sq. ft	Yes
14	Carport	19'0" x 35'10"	681 sq. ft	No
15	Porch	5'3" x 3'10"	20 sq. ft	No

Home report

245 Lee Street, Forest River, Mount Prospect, Cook County,
Illinois, United States, 60056



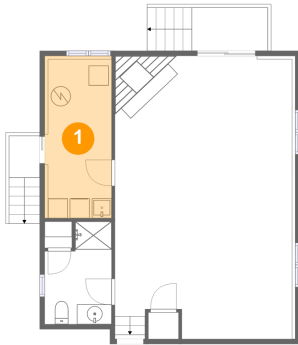
Room dimensions

Floor 3 Total sqft: 776 Living area: 776

#		Dimensions	sqft	Counted as living area
16	Primary Bedroom	10'2" x 20'3"	169 sq. ft	Yes
17	Bath	10'2" x 10'8"	85 sq. ft	Yes
18	Bedroom	14'10" x 10'11"	162 sq. ft	Yes
19	Bedroom	11'5" x 14'10"	170 sq. ft	Yes
20	Hall	3'1" x 14'0"	53 sq. ft	Yes

245 Lee Street, Forest River, Mount Prospect, Cook County,
Illinois, United States, 60056

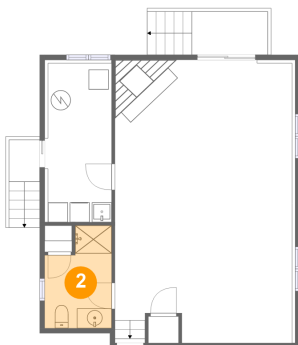
1 Floor 1 - Utility



Dimensions: 6'9" x 16'0"
Area: 110 sq. ft
Counted as living area: Yes

Heated: Yes
Finished: Yes
Enclosed: Yes
Contiguous: Yes
Permitted: Yes
Wet space: No
Addition: No
Conversion: No

2 Floor 1 - Bath

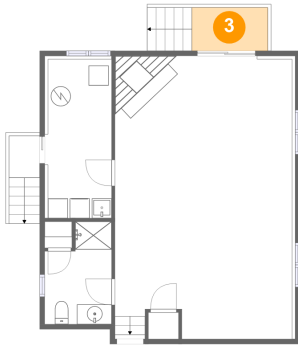


Dimensions: 6'9" x 10'4"
Area: 61 sq. ft
Counted as living area: Yes

Heated: Yes
Finished: Yes
Enclosed: Yes
Contiguous: Yes
Permitted: Yes
Wet space: Yes
Addition: No
Conversion: No

245 Lee Street, Forest River, Mount Prospect, Cook County,
Illinois, United States, 60056

3 Floor 1 - Outdoor



Dimensions: 7'7" x 4'4"
Area: 33 sq. ft
Counted as living area: No

Heated: No
Finished: No
Enclosed: No
Contiguous: Yes
Permitted: No
Wet space: No
Addition: No
Conversion: No

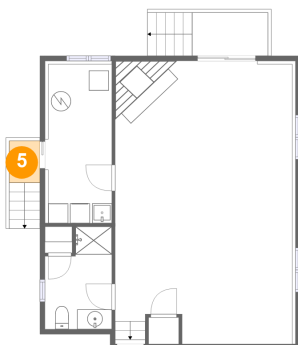
4 Floor 1 - Recreation Room



Dimensions: 17'10" x 28'6"
Area: 508 sq. ft
Counted as living area: Yes

Heated: Yes
Finished: Yes
Enclosed: Yes
Contiguous: Yes
Permitted: Yes
Wet space: No
Addition: No
Conversion: No

5 Floor 1 - Outdoor

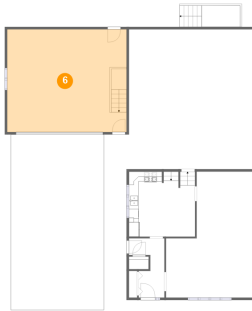


Dimensions: 3'0" x 4'3"
Area: 13 sq. ft
Counted as living area: No

Heated: No
Finished: No
Enclosed: No
Contiguous: Yes
Permitted: No
Wet space: No
Addition: No
Conversion: No

245 Lee Street, Forest River, Mount Prospect, Cook County,
Illinois, United States, 60056

6 Floor 2 - Garage



Dimensions: 24'5" x 21'0"
Area: 511 sq. ft
Counted as living area: No

Heated: No
Finished: No
Enclosed: Yes
Contiguous: Yes
Permitted: Yes
Wet space: No
Addition: No
Conversion: No

7 Floor 2 - Living Room



Dimensions: 17'9" x 12'1"
Area: 214 sq. ft
Counted as living area: Yes

Heated: Yes
Finished: Yes
Enclosed: Yes
Contiguous: Yes
Permitted: Yes
Wet space: No
Addition: No
Conversion: No

8 Floor 2 - Entry

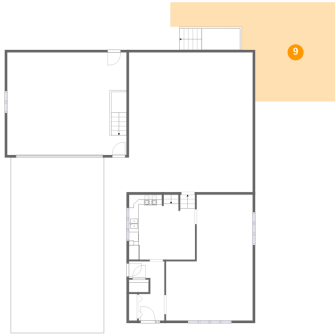


Dimensions: 7'3" x 3'5"
Area: 25 sq. ft
Counted as living area: Yes

Heated: Yes
Finished: Yes
Enclosed: Yes
Contiguous: Yes
Permitted: Yes
Wet space: No
Addition: No
Conversion: No

245 Lee Street, Forest River, Mount Prospect, Cook County,
Illinois, United States, 60056

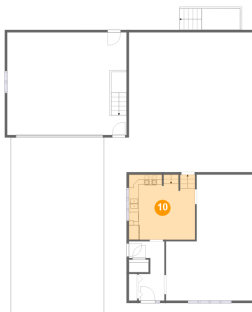
9 Floor 2 - Patio



Dimensions: 34'1" x 20'2"
Area: 440 sq. ft
Counted as living area: No

Heated: No
Finished: Yes
Enclosed: No
Contiguous: Yes
Permitted: Yes
Wet space: No
Addition: No
Conversion: No

10 Floor 2 - Eat-in Kitchen



Dimensions: 13'6" x 13'3"
Area: 177 sq. ft
Counted as living area: Yes

Heated: Yes
Finished: Yes
Enclosed: Yes
Contiguous: Yes
Permitted: Yes
Wet space: No
Addition: No
Conversion: No

11 Floor 2 - Outdoor



Dimensions: 7'10" x 4'4"
Area: 34 sq. ft
Counted as living area: No

Heated: No
Finished: No
Enclosed: No
Contiguous: Yes
Permitted: No
Wet space: No
Addition: No
Conversion: No

245 Lee Street, Forest River, Mount Prospect, Cook County,
Illinois, United States, 60056

12 Floor 2 - Dining Area



Dimensions: 11'5" x 13'7"
Area: 156 sq. ft
Counted as living area: Yes

Heated: Yes
Finished: Yes
Enclosed: Yes
Contiguous: Yes
Permitted: Yes
Wet space: No
Addition: No
Conversion: No

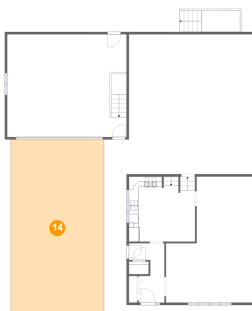
13 Floor 2 - Foyer



Dimensions: 5'3" x 8'8"
Area: 38 sq. ft
Counted as living area: Yes

Heated: Yes
Finished: Yes
Enclosed: Yes
Contiguous: Yes
Permitted: Yes
Wet space: No
Addition: No
Conversion: No

14 Floor 2 - Carport



Dimensions: 19'0" x 35'10"
Area: 681 sq. ft
Counted as living area: No

Heated: No
Finished: Yes
Enclosed: No
Contiguous: Yes
Permitted: Yes
Wet space: No
Addition: No
Conversion: No

245 Lee Street, Forest River, Mount Prospect, Cook County,
Illinois, United States, 60056

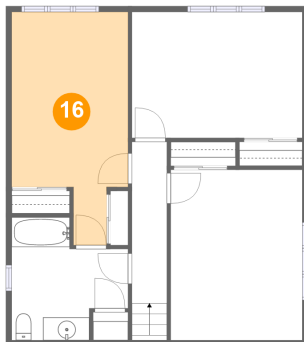
15 Floor 2 - Porch



Dimensions: 5'3" x 3'10"
Area: 20 sq. ft
Counted as living area: No

Heated: No
Finished: Yes
Enclosed: No
Contiguous: Yes
Permitted: Yes
Wet space: No
Addition: No
Conversion: No

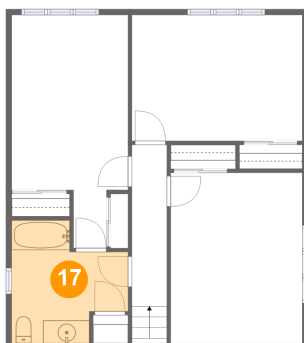
16 Floor 3 - Primary Bedroom



Dimensions: 10'2" x 20'3"
Area: 169 sq. ft
Counted as living area: Yes

Heated: Yes
Finished: Yes
Enclosed: Yes
Contiguous: Yes
Permitted: Yes
Wet space: No
Addition: No
Conversion: No

17 Floor 3 - Bath

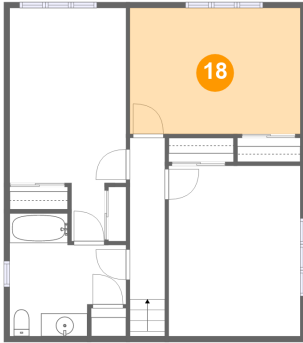


Dimensions: 10'2" x 10'8"
Area: 85 sq. ft
Counted as living area: Yes

Heated: Yes
Finished: Yes
Enclosed: Yes
Contiguous: Yes
Permitted: Yes
Wet space: Yes
Addition: No
Conversion: No

245 Lee Street, Forest River, Mount Prospect, Cook County,
Illinois, United States, 60056

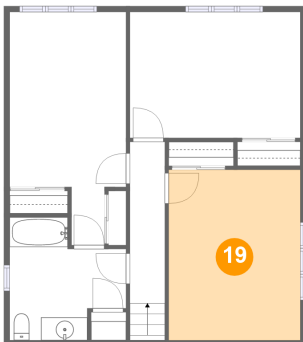
18 Floor 3 - Bedroom



Dimensions: 14'10" x 10'11"
Area: 162 sq. ft
Counted as living area: Yes

Heated: Yes
Finished: Yes
Enclosed: Yes
Contiguous: Yes
Permitted: Yes
Wet space: No
Addition: No
Conversion: No

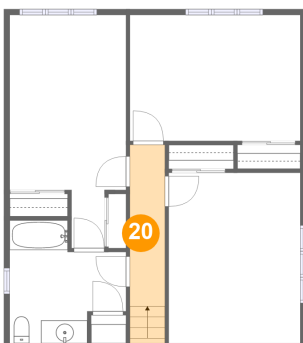
19 Floor 3 - Bedroom



Dimensions: 11'5" x 14'10"
Area: 170 sq. ft
Counted as living area: Yes

Heated: Yes
Finished: Yes
Enclosed: Yes
Contiguous: Yes
Permitted: Yes
Wet space: No
Addition: No
Conversion: No

20 Floor 3 - Hall



Dimensions: 3'1" x 14'0"
Area: 53 sq. ft
Counted as living area: Yes

Heated: Yes
Finished: Yes
Enclosed: Yes
Contiguous: Yes
Permitted: Yes
Wet space: No
Addition: No
Conversion: No